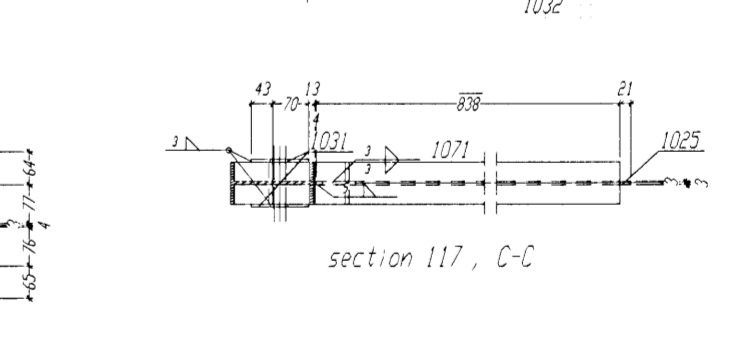
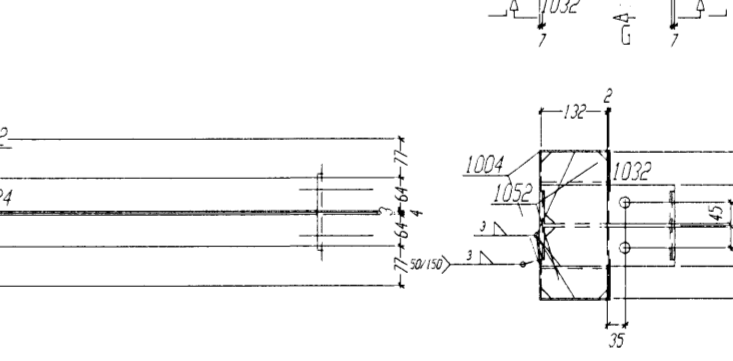
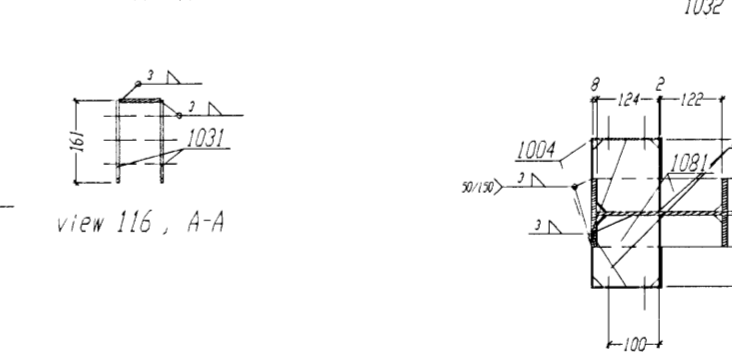
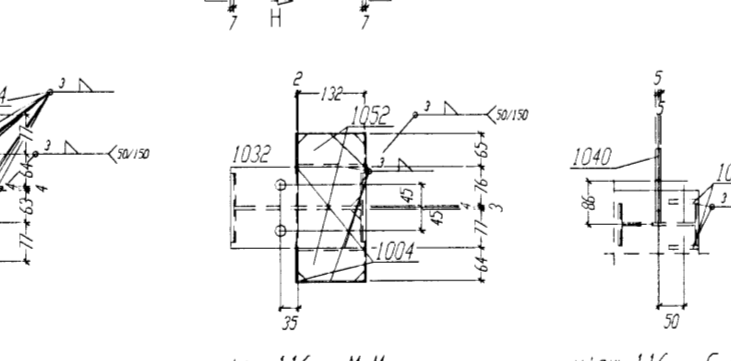
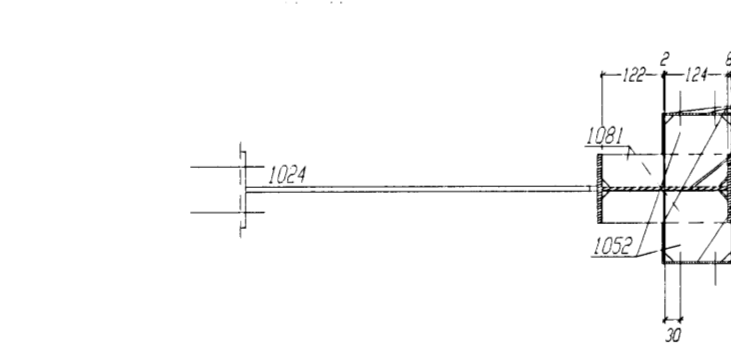
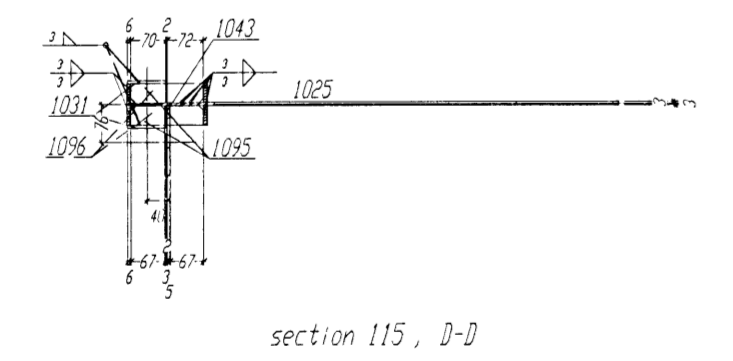


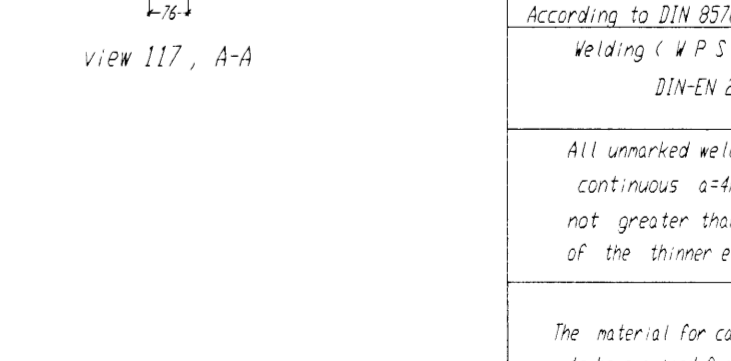
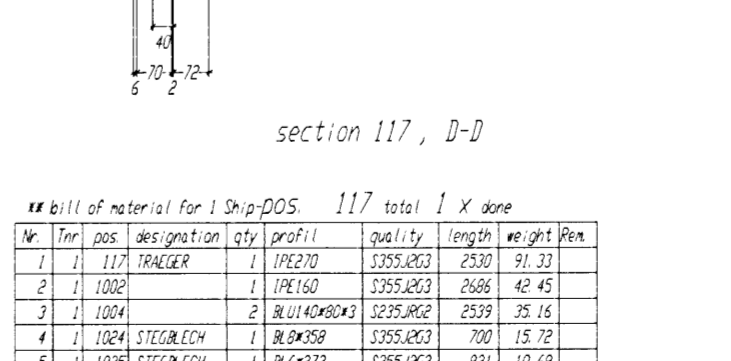
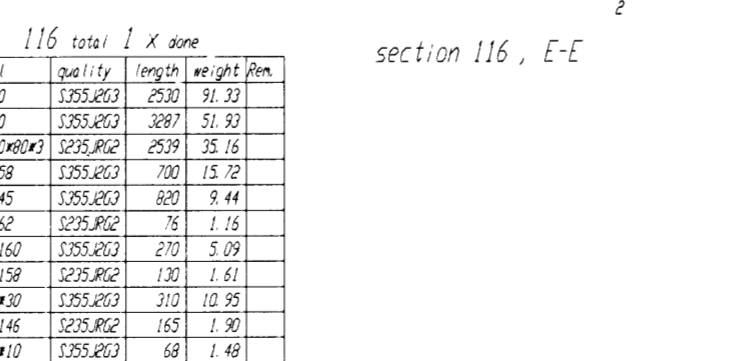
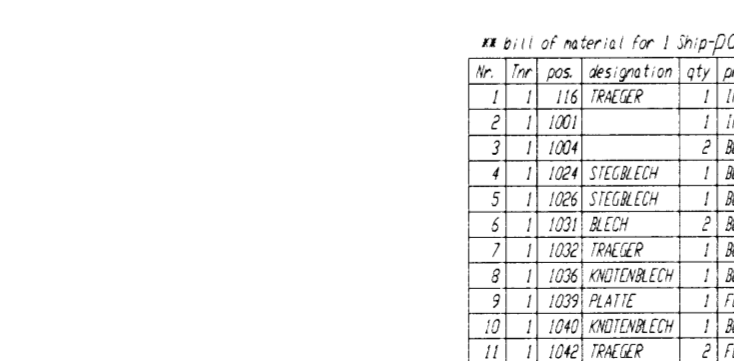
# Bill of material for 1 Shig-DOS 115 total 2 x none

| NO  | POS  | DESCRIPTION | QTY | PROF.1   | QTY  | LENGTH | WEIGHT | PERM   |
|---|------|-------------|-----|----------|------|--------|--------|--------|
| 1   | 115  | TRACER      | 1   | PRE210   | 2530 | 31.23  |        |        |
| 2   | 1106 | PIPE        | 1   | FL160    | 2530 | 42.45  |        |        |
| 3   | 1004 | STEELBLECH  | 1   | BL160X20 | 2530 | 15.12  |        |        |
| 4   | 1025 | STEELBLECH  | 1   | BL160X20 | 831  | 12.63  |        |        |
| 5   | 1021 | BLECH       | 2   | BL160X20 | 2530 | 15.12  |        |        |
| 6   | 1024 | TRACER      | 1   | BL160X20 | 2530 | 15.12  |        |        |
| 7   | 1022 | ANDTRENLECH | 1   | BL160X20 | 2530 | 15.12  |        |        |
| 8   | 1023 | PLATE       | 1   | FL160X20 | 2530 | 15.12  |        |        |
| 9   | 1043 | ANDTRENLECH | 1   | BL160X20 | 160  | 1.72   |        |        |
| 10  | 1044 | ANDTRENLECH | 1   | BL160X20 | 160  | 1.72   |        |        |
| 11  | 1045 | PLATE       | 1   | BL160X20 | 801  | 10.28  |        |        |
| 12  | 1047 | PLATE       | 1   | BL160X20 | 707  | 7.49   |        |        |
| 13  | 1063 | PLATE       | 1   | FL160X20 | 160  | 4.24   |        |        |
| 14  | 1020 | PLATE       | 1   | BL160    | 368  | 4.30   |        |        |
| 15  | 1021 | PLATE       | 1   | BL160    | 368  | 4.30   |        |        |
| 16  | 1081 | PIPE        | 2   | BL160X4  | 248  | 2.48   |        |        |
| 17  | 1086 | PIPE        | 2   | FL160X4  | 120  | 3.0    |        |        |
| 18  | 1096 | PIPE        | 2   | BL160X8  | 144  | 6.9    |        |        |
| 19  | 1098 | PIPE        | 2   | BL160X8  | 70   | 3.3    |        |        |
| total weight (kg)                                 |      |             |     |          |      |        |        | 218.10 |
| Shipping dimensions (L x B x H) 1004 x 237 x 5324 |      |             |     |          |      |        |        |        |



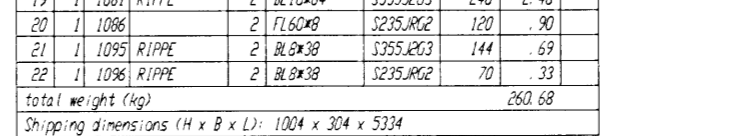
# Bill of material for 1 Shig-DOS 116 total 1 x none

| NO  | POS  | DESCRIPTION | QTY | PROF.1   | QTY  | LENGTH | WEIGHT | PERM   |
|---|------|-------------|-----|----------|------|--------|--------|--------|
| 1   | 116  | TRACER      | 1   | PRE210   | 2530 | 31.23  |        |        |
| 2   | 1106 | PIPE        | 1   | FL160    | 2530 | 42.45  |        |        |
| 3   | 1004 | STEELBLECH  | 1   | BL160X20 | 2530 | 15.12  |        |        |
| 4   | 1025 | STEELBLECH  | 1   | BL160X20 | 801  | 12.63  |        |        |
| 5   | 1021 | BLECH       | 2   | BL160X20 | 2530 | 15.12  |        |        |
| 6   | 1024 | TRACER      | 1   | BL160X20 | 2530 | 15.12  |        |        |
| 7   | 1022 | ANDTRENLECH | 1   | BL160X20 | 2530 | 15.12  |        |        |
| 8   | 1023 | PLATE       | 1   | FL160X20 | 2530 | 15.12  |        |        |
| 9   | 1043 | ANDTRENLECH | 1   | BL160X20 | 170  | 1.77   |        |        |
| 10  | 1044 | ANDTRENLECH | 1   | BL160X20 | 170  | 1.77   |        |        |
| 11  | 1045 | PLATE       | 1   | BL160X20 | 804  | 11.44  |        |        |
| 12  | 1047 | PLATE       | 1   | BL160X20 | 707  | 7.49   |        |        |
| 13  | 1063 | PLATE       | 1   | FL160X20 | 160  | 4.24   |        |        |
| 14  | 1020 | PLATE       | 1   | BL160    | 368  | 4.30   |        |        |
| 15  | 1021 | PLATE       | 1   | BL160    | 368  | 4.30   |        |        |
| 16  | 1081 | PIPE        | 2   | BL160X4  | 248  | 2.48   |        |        |
| 17  | 1086 | PIPE        | 2   | FL160X4  | 120  | 3.0    |        |        |
| 18  | 1096 | PIPE        | 2   | BL160X8  | 144  | 6.9    |        |        |
| 19  | 1098 | PIPE        | 2   | BL160X8  | 70   | 3.3    |        |        |
| total weight (kg)                                 |      |             |     |          |      |        |        | 260.12 |
| Shipping dimensions (L x B x H) 1004 x 204 x 5324 |      |             |     |          |      |        |        |        |



# Bill of material for 1 Shig-DOS 117 total 1 x none

| NO  | POS  | DESCRIPTION | QTY | PROF.1   | QTY  | LENGTH | WEIGHT | PERM   |
|---|------|-------------|-----|----------|------|--------|--------|--------|
| 1   | 117  | TRACER      | 1   | PRE210   | 2530 | 31.23  |        |        |
| 2   | 1106 | PIPE        | 1   | FL160    | 2530 | 42.45  |        |        |
| 3   | 1004 | STEELBLECH  | 1   | BL160X20 | 2530 | 15.12  |        |        |
| 4   | 1025 | STEELBLECH  | 1   | BL160X20 | 700  | 15.12  |        |        |
| 5   | 1021 | BLECH       | 1   | BL160X20 | 801  | 12.63  |        |        |
| 6   | 1024 | TRACER      | 1   | BL160X20 | 2530 | 15.12  |        |        |
| 7   | 1022 | ANDTRENLECH | 1   | BL160X20 | 2530 | 15.12  |        |        |
| 8   | 1023 | PLATE       | 1   | FL160X20 | 2530 | 15.12  |        |        |
| 9   | 1043 | ANDTRENLECH | 1   | BL160X20 | 160  | 1.72   |        |        |
| 10  | 1044 | ANDTRENLECH | 1   | BL160X20 | 160  | 1.72   |        |        |
| 11  | 1045 | PLATE       | 1   | BL160X20 | 801  | 10.28  |        |        |
| 12  | 1047 | PLATE       | 1   | BL160X20 | 707  | 7.49   |        |        |
| 13  | 1063 | PLATE       | 1   | FL160X20 | 160  | 4.24   |        |        |
| 14  | 1020 | PLATE       | 1   | BL160    | 368  | 4.30   |        |        |
| 15  | 1021 | PLATE       | 1   | BL160    | 368  | 4.30   |        |        |
| 16  | 1081 | PIPE        | 2   | BL160X4  | 248  | 2.48   |        |        |
| 17  | 1086 | PIPE        | 2   | FL160X4  | 120  | 3.0    |        |        |
| 18  | 1096 | PIPE        | 2   | BL160X8  | 144  | 6.9    |        |        |
| 19  | 1098 | PIPE        | 2   | BL160X8  | 70   | 3.3    |        |        |
| total weight (kg)                                 |      |             |     |          |      |        |        | 260.68 |
| Shipping dimensions (L x B x H) 1004 x 204 x 5324 |      |             |     |          |      |        |        |        |



Samþykkt þann  
08 JULI 2008  
Byggingartúlltrúinn í Hafnarfirði  
F.Þ. Frólfur S. Gunnlaugsson

BL, FL = PLATE  
RDHR = TUBE  
RUND = STEEL BAR  
MSH = RHS  
SCHR = BOLT, SCREW

Tolerance for welded constructions  
According to DIN 8570 Pt 1+3/EN 10 87

Welding (P 5) according to  
DIN-EN 898 - 2

All unwelded joints to be fillet  
continuous often thick,  
not greater than 0.7 d  
of the thinner element

The material for cap plates >20 mm thick  
to be examined for laminations

Requires for stressing forces and forces  
tension angles according to DIN 18800 Pt 1, 25 93

Processing of materials according to  
DIN 18800 Pt 1, 25 93

Pos. 115-117  
-GJAHELLA 15  
-221 HAFNARFJÖRDUR

Sveinbjörn Hinriksson  
Byggingateknifræðingur

KI 100561-2629  
Brekkgata 8 Hafnarfirði  
Sími: 555-4008, 861-9861  
Netfang: sveinh@netnet.is

104