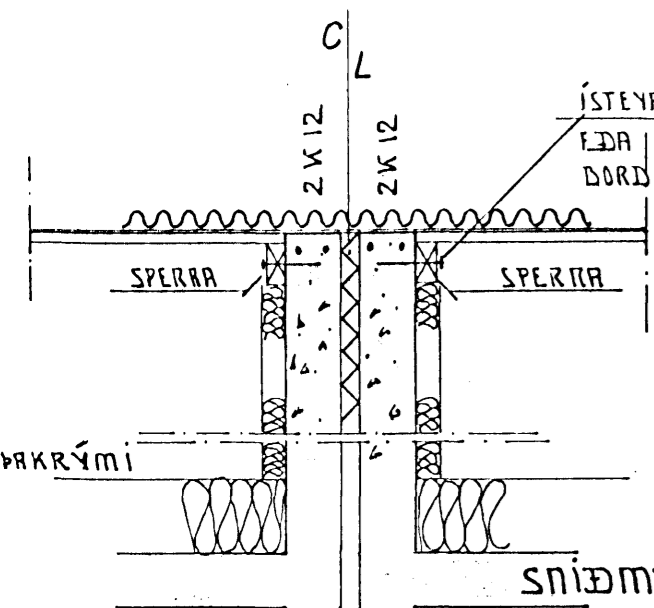
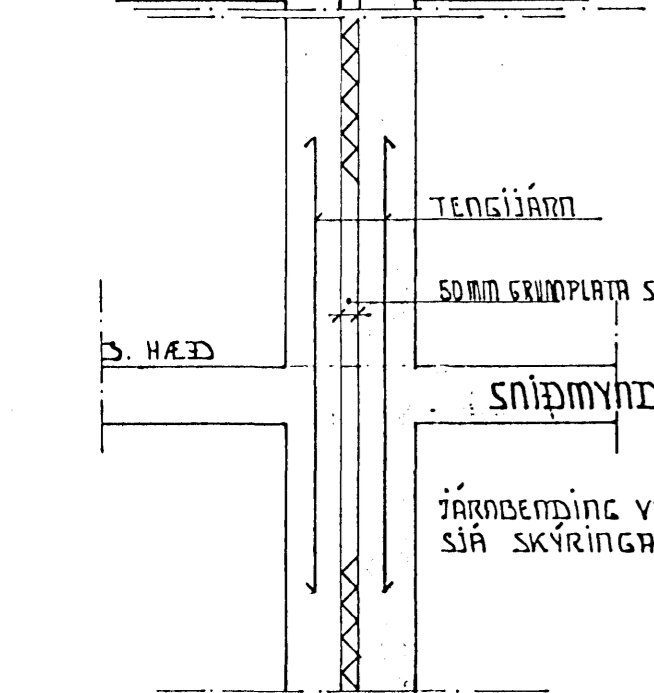


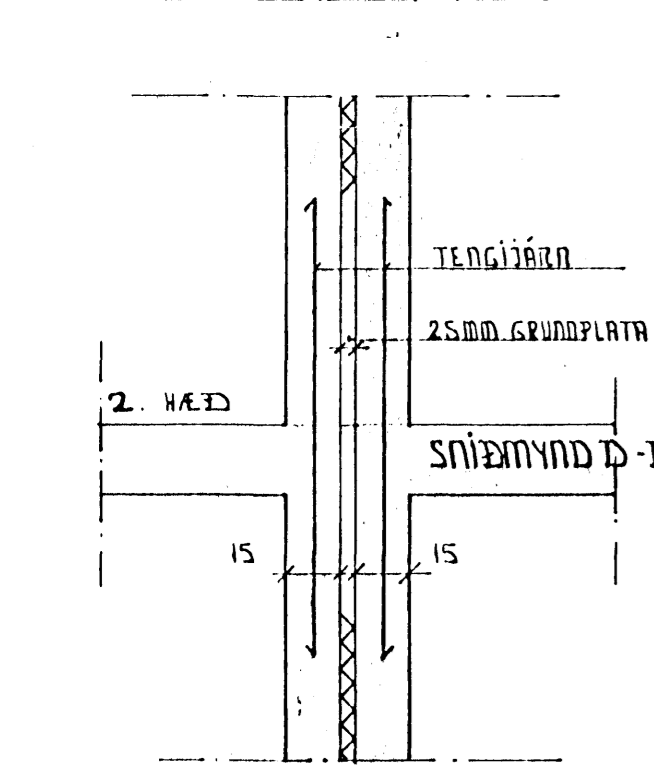
ÞEGAR SKEYTA ÞARF SPERRUR SAMAN SKAL NOTA LASKA 1" X 4"
 BEGGJA MEGIN SPERRU, NEGLING 5 STK. 3" SAUMUR X 4.
 SAMSKEYTUM SKAL VÍXLA ÞANNIG AD SKEYTING SE EKKI Í BEINUM
 RÖÐUM.



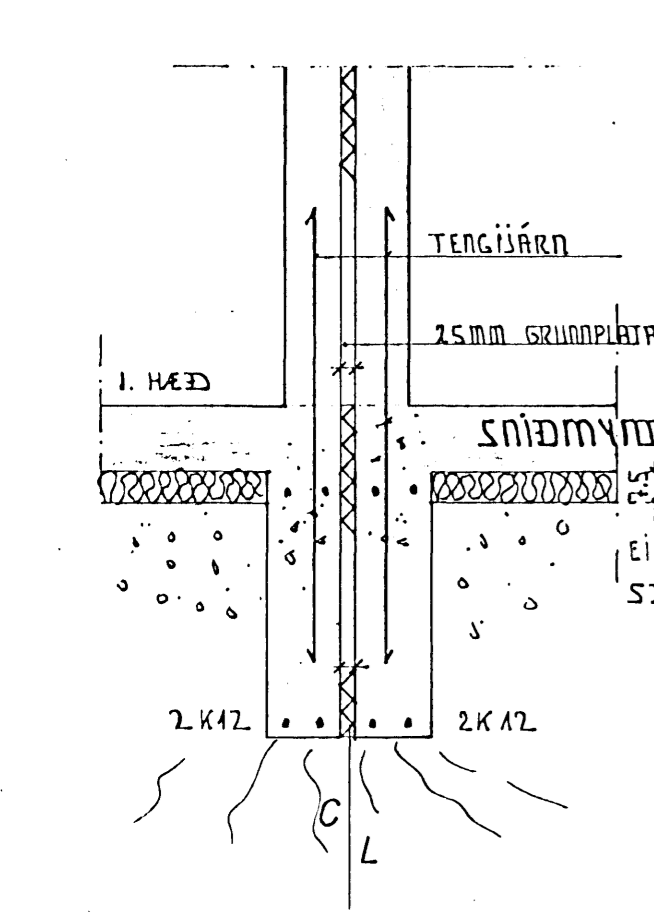
SNIDMYND G-G



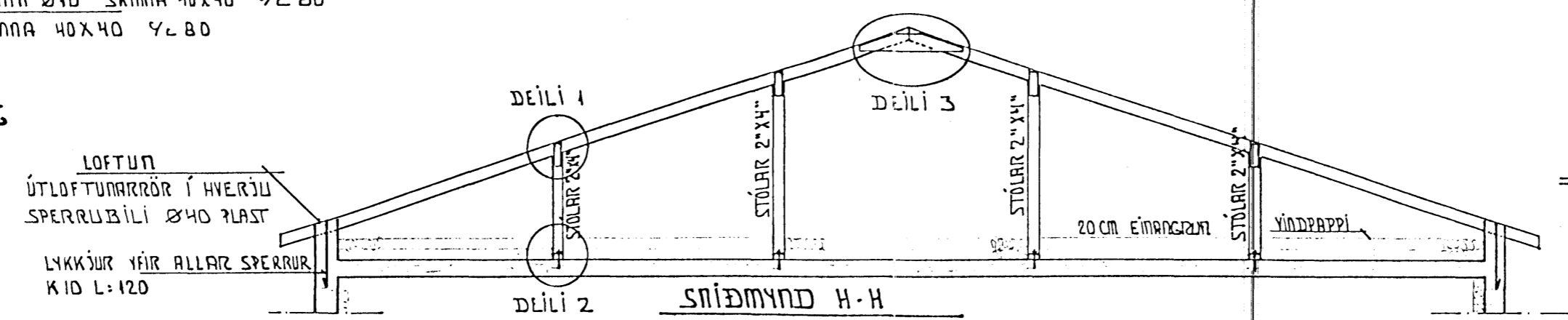
SNIDMYND F-F



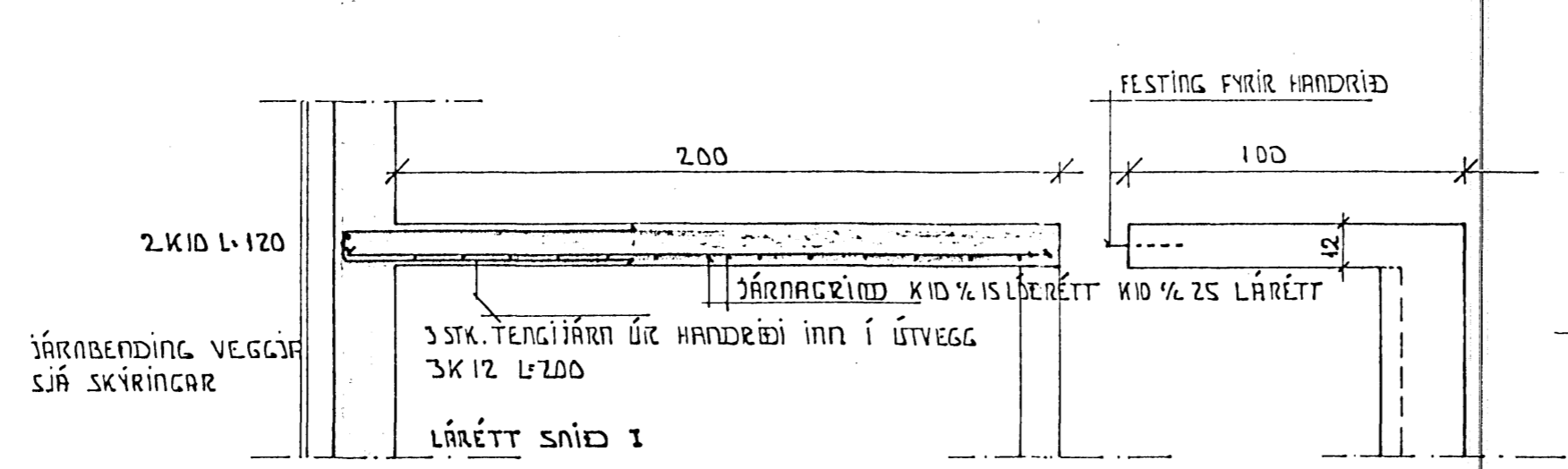
SNIDMYND E-E



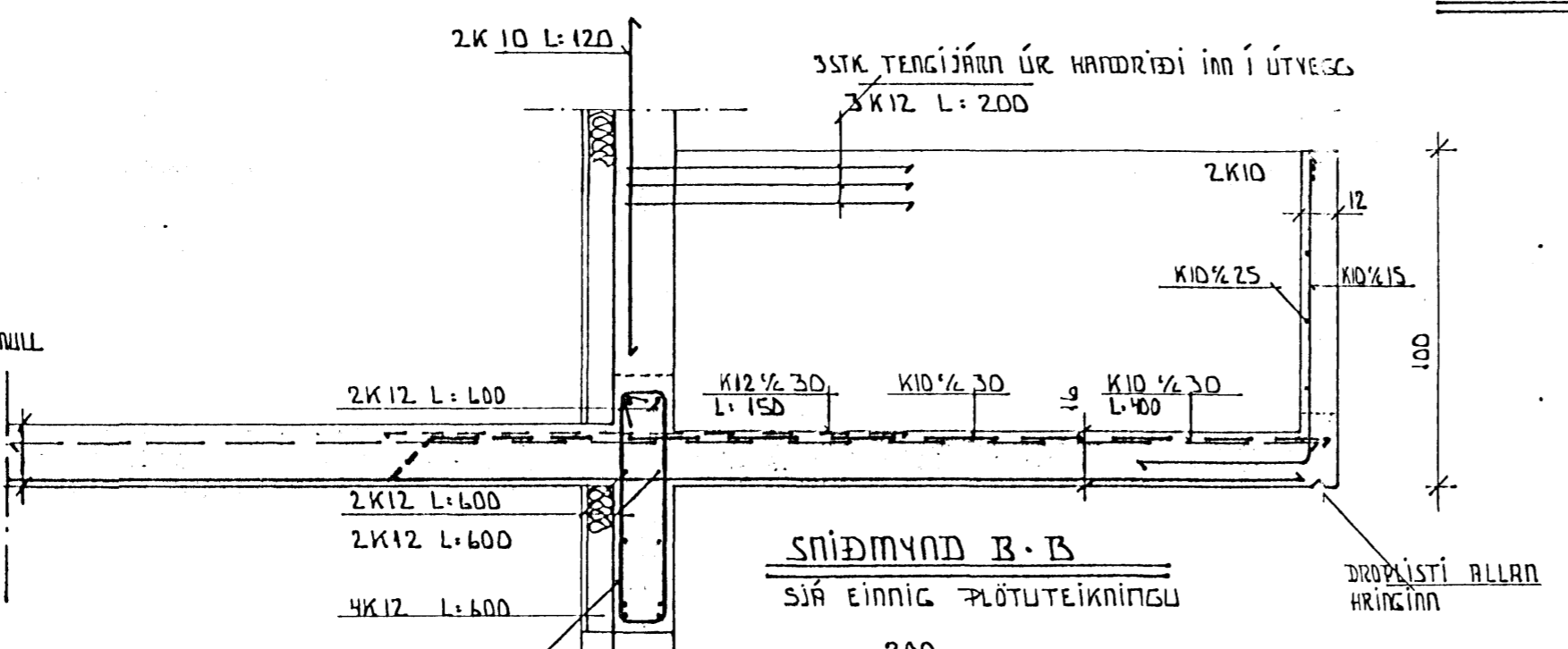
SNIDMYND H-A



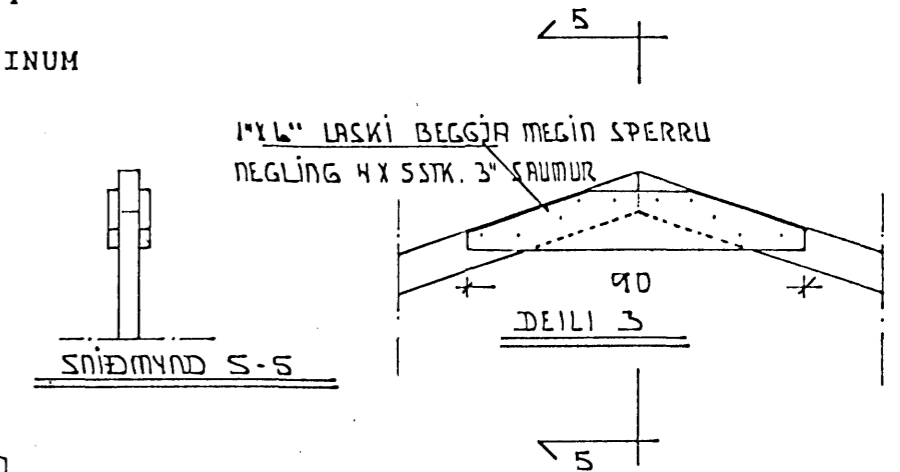
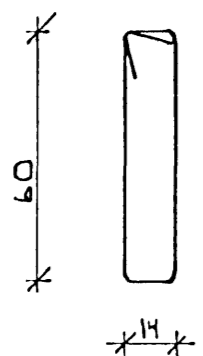
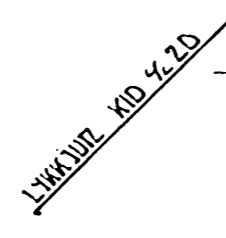
SNIDMYND H-H



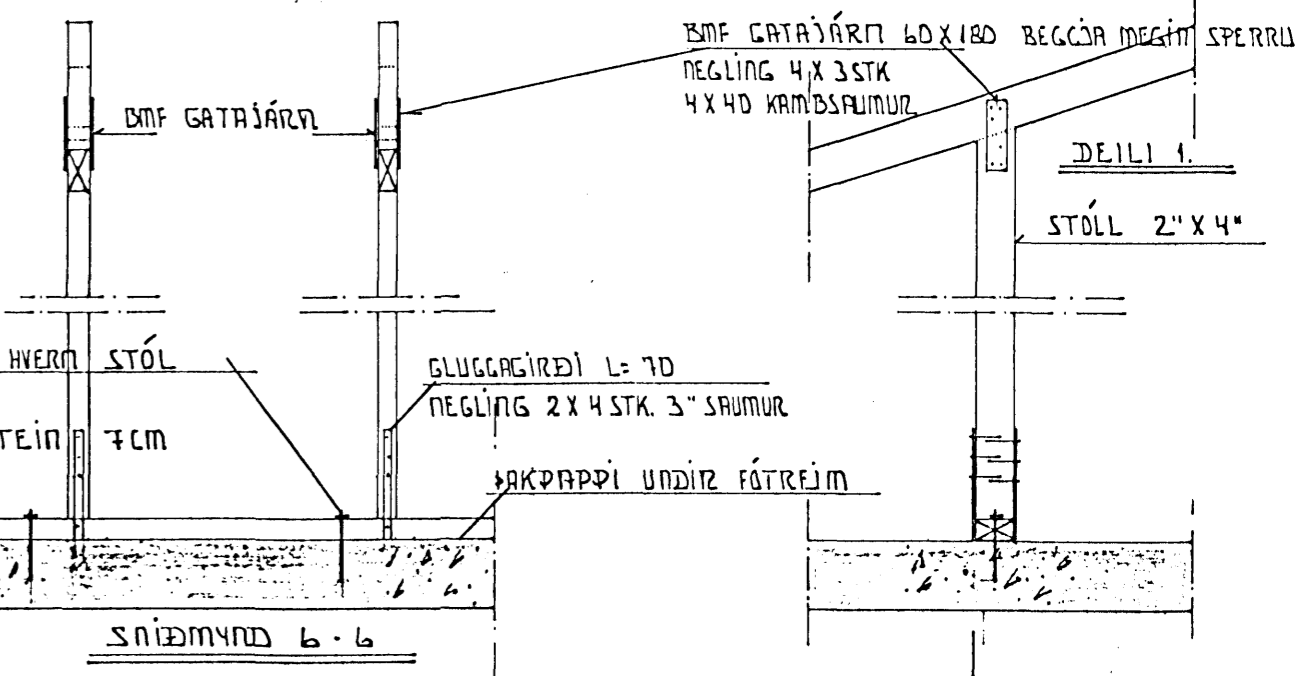
LÁRÉTT SNID I



SNIDMYND B-B
 SJÁ EINNIG FLÖTU TEIKNINGU

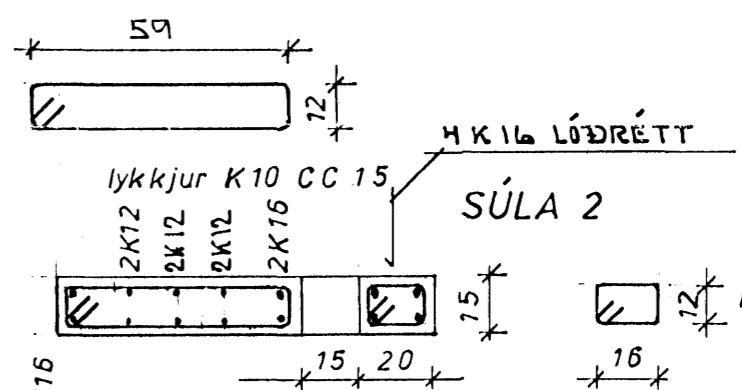


1" X 4" LASKI BEGGJA MEGIN SPERRU
 NEGLING 4 X 5 STK. 3" SAUMUR

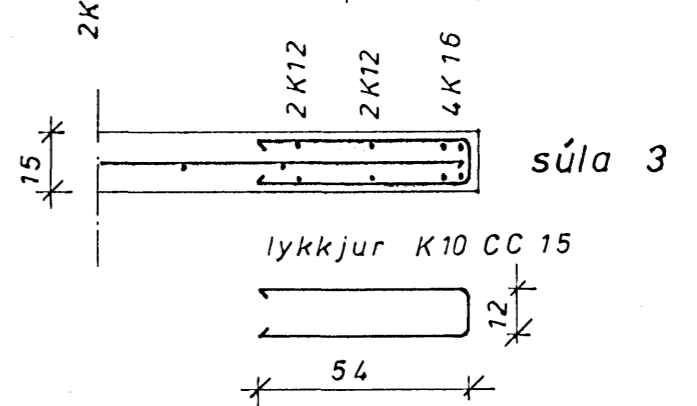


SNIDMYND b-b

MÚRBDLTI Ø12 VÍÐ HVERN STÖL
 SKINNUR 40X40X4
 L=140 BÖRDÝPT Í
 STEIN 7CM

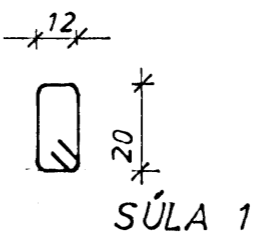


SÚLA 2

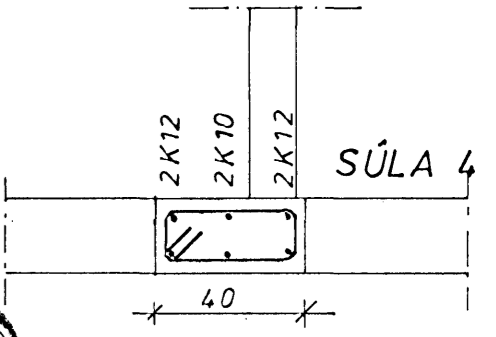


SÚLA 3

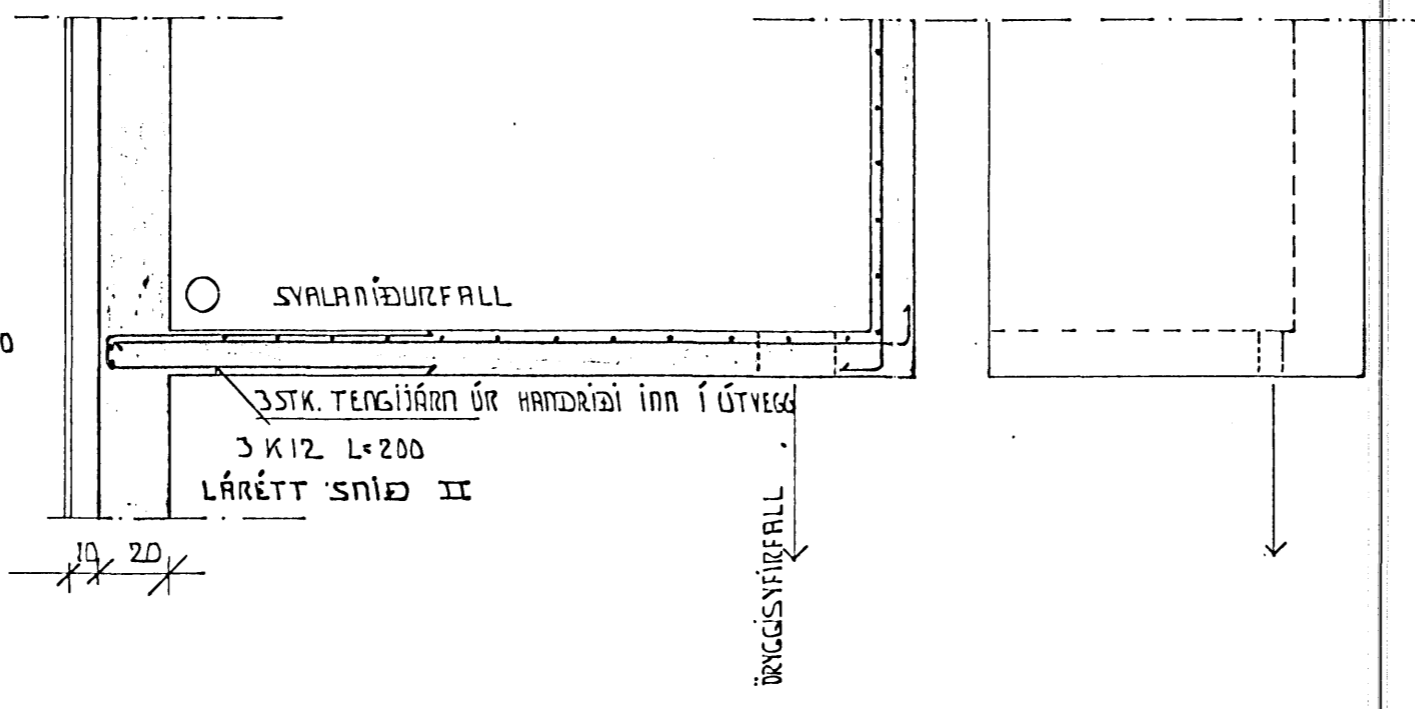
lykkjur K10 CC 15



SÚLA 1



SÚLA 4



LÁRÉTT SNID III



ÁSKILIÐ, ELDRI
 TEIKNING ÓGILD

ÞEJARHOLT 1 HAFNARFIRÐI	FEB 1991
BURDARÐÓL, SNIDMYNÐIR	1:20 1:50
TEKNIÞJÓNUSTA SVEINS KARLSSONAR TFÍ ÞEJARHRAUNI 2 220 HAFNARFJURÐUR 91-653045	TEIKNING B-6

Stein