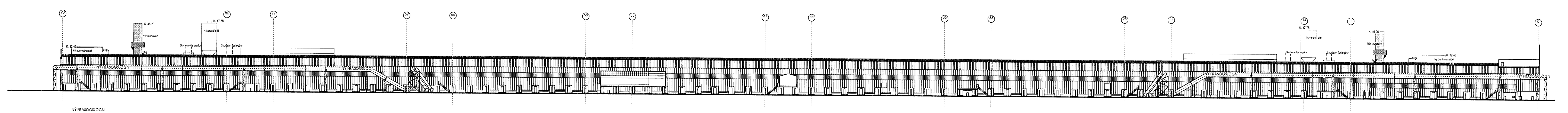
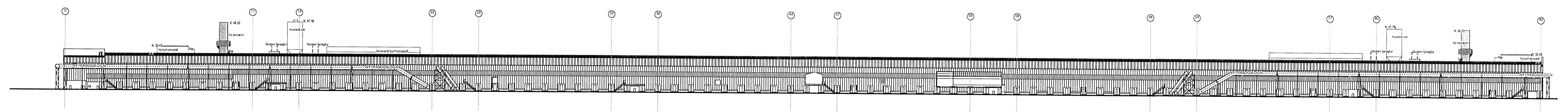


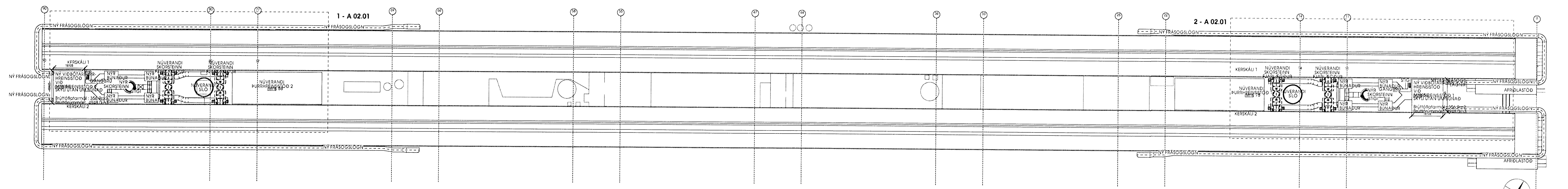
1 ÚTLIT ÞURRHEINSISTÖÐVAR 1 OG 2 AÐ KERSKÁLA 1
 mkv. 1:1200



2 ÚTLIT SUÐUR, AÐ KERSKÁLA 2
 mkv. 1:1200



3 ÚTLIT NORÐUR, AÐ KERSKÁLA 1
 mkv. 1:1200



4 ÞAKMYND, KERSKÁLI 1 OG 2
 mkv. 1:1200

Hrólfur S. Gunnlaugsson
 171258-2264

GLÁMA · KÍM
 Arkitektúr Laugavegi 164 ehf. 108 Reykjavík
 sí: 530 8100, f: 530 8101, s: 500 496 2239
 glama.kim@glama.kim.is, www.glama.kim.is

HRV
 ENGINEERING

Staðir:	Bygging:	Dagur:	Samband:	Notk. heimil:
Revi:	Revi:	Dagur:	Áhrif:	Revi:

The drawing is the property of Rio Tinto Alcan Iceland Ltd. and is loaned out for professional use only. It may not be copied, reproduced or made available to others without the written permission of Rio Tinto Alcan Iceland Ltd. This notice is visible for any reuse.

ÞURRHEINSISTÖÐVAR 1 OG 2
 ÚTLIT / ÞAKMYND
ADALUPPDRATTUR
 Gláma Kím Arkitektar Laugavegi 164 ehf.
 KA 2010.07.28 SK 2010.07.29
Rio Tinto Alcan

Staðir:	Mkv.:	1:1200
Form:	Skala:	
Kostn. nr. - búna. nr. / CChp. - Eq. nr.		
AKS nr.:		
Staðir:	Dwg. nr. of suppr.:	Revi / Rev.:
KA	A01.03	
Staðir:	Staðir:	Revi / Rev.:
KA	SK	