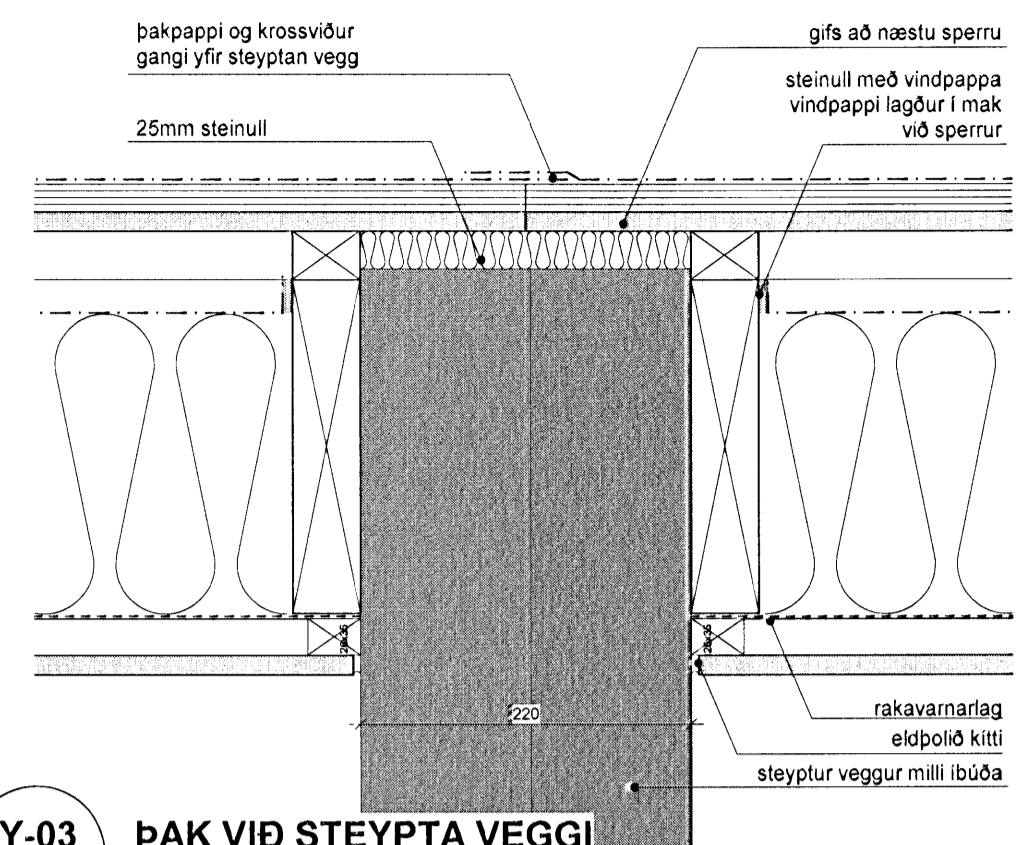
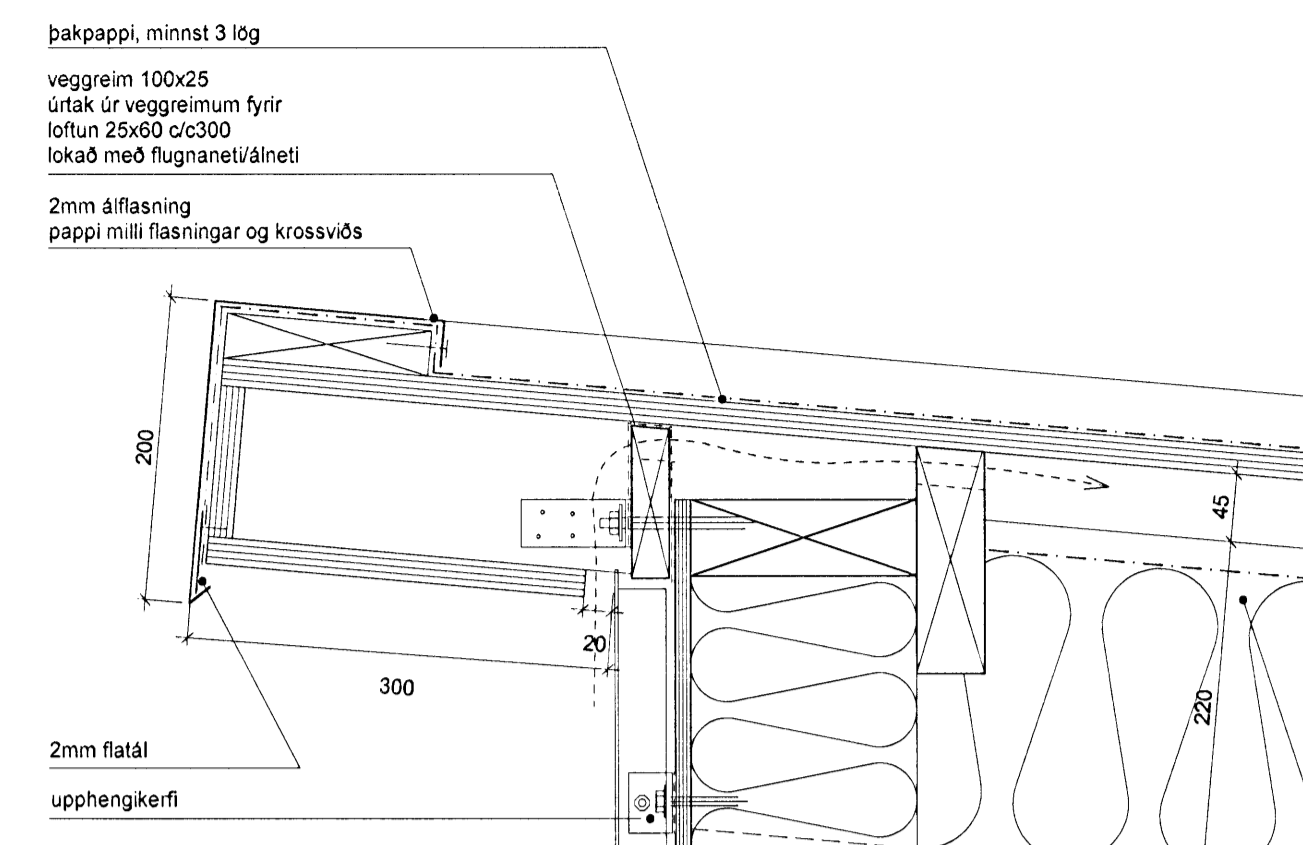


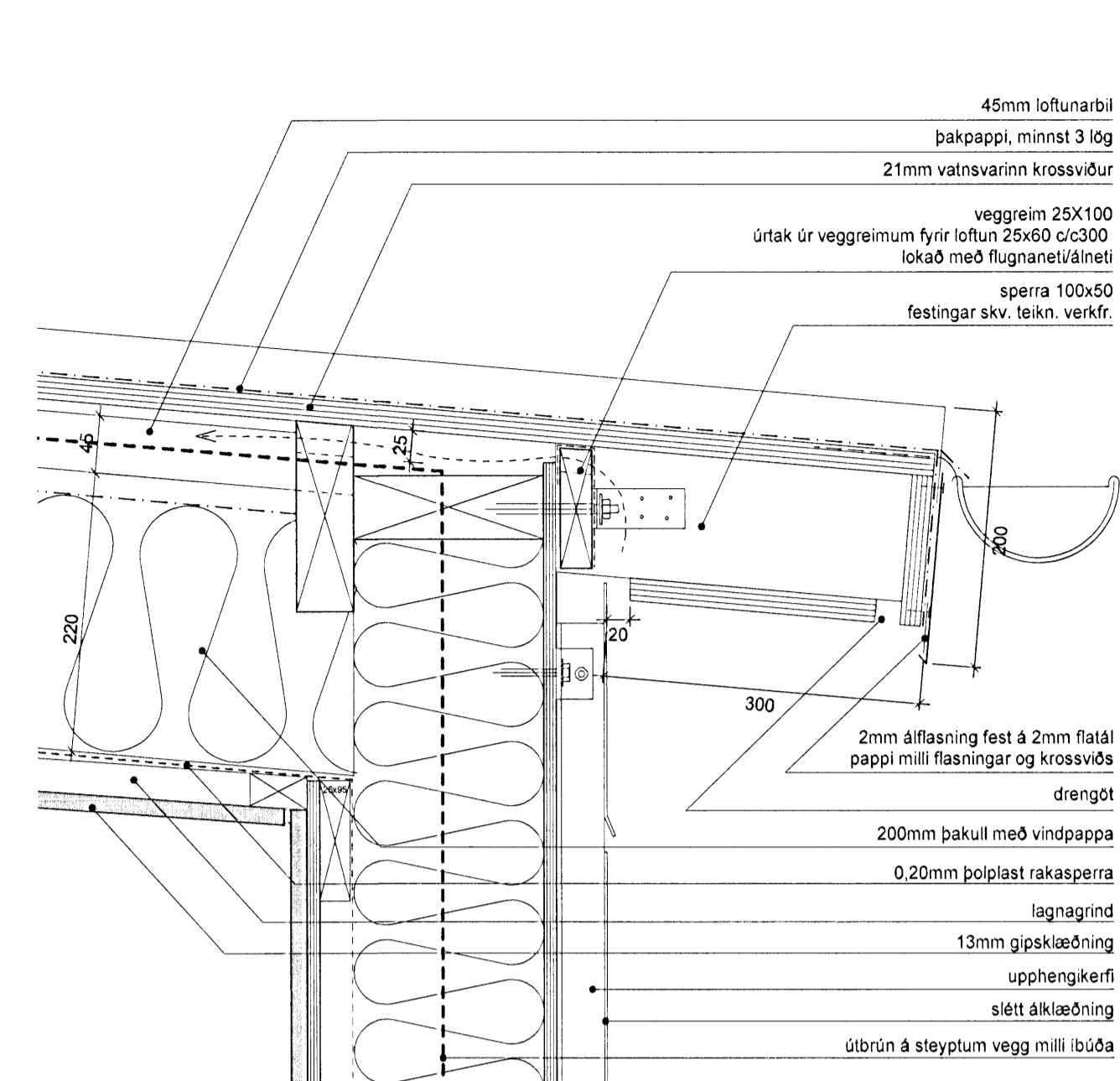
Y-04 ÞAKKANTUR Á GAFLI
20-30/1 lóðrétt deili



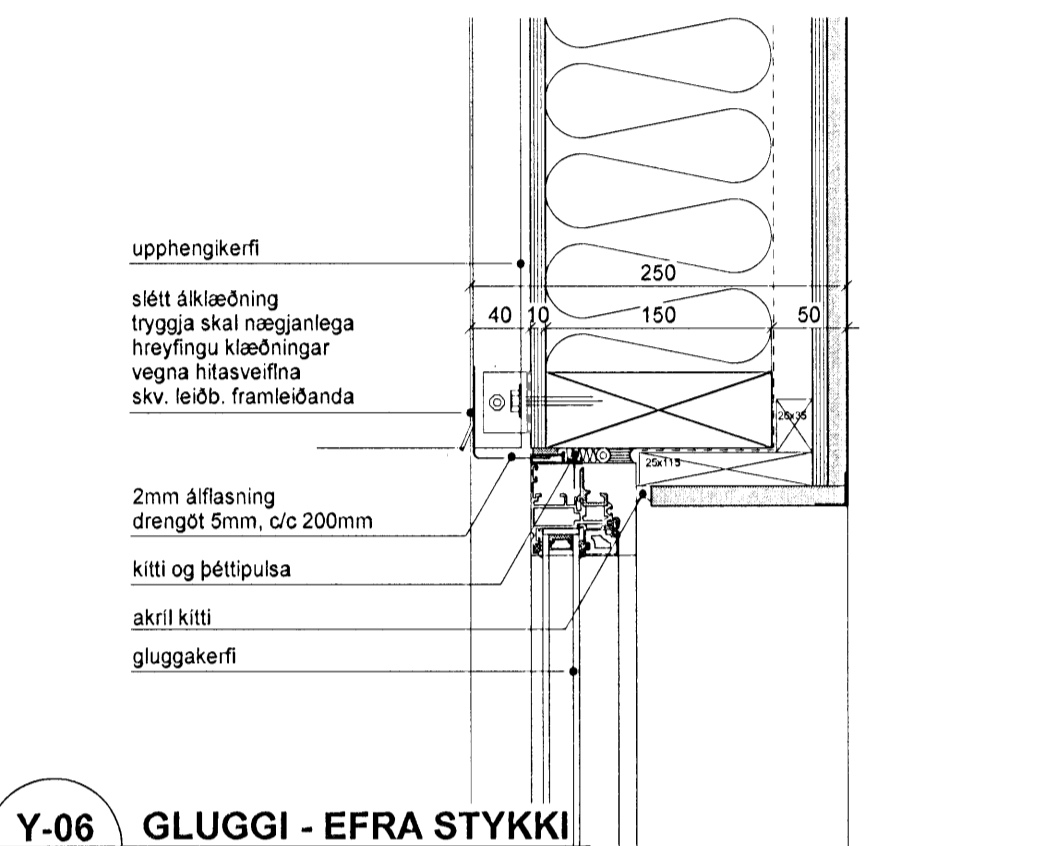
Y-03 ÞAK VIÐ STEYPTA VEGGI
20-20 lóðrétt deili



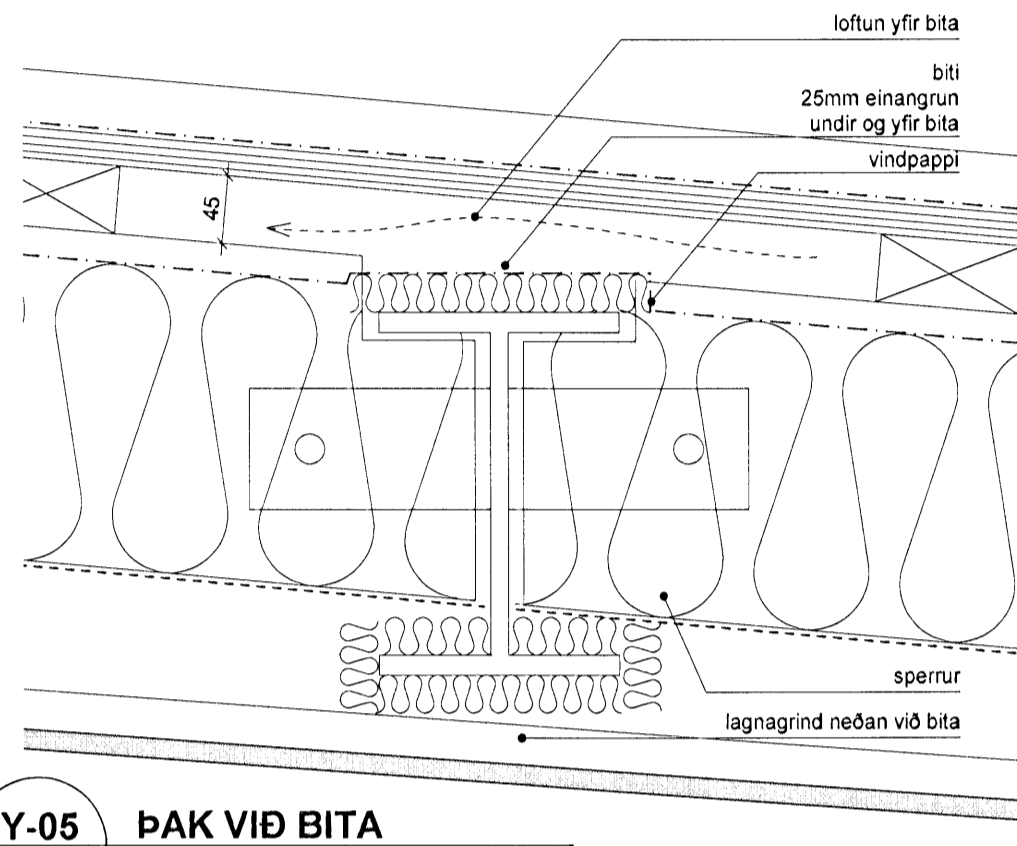
Y-02 ÞAKKANTUR EFRI BRÚN
20-20 lóðrétt deili



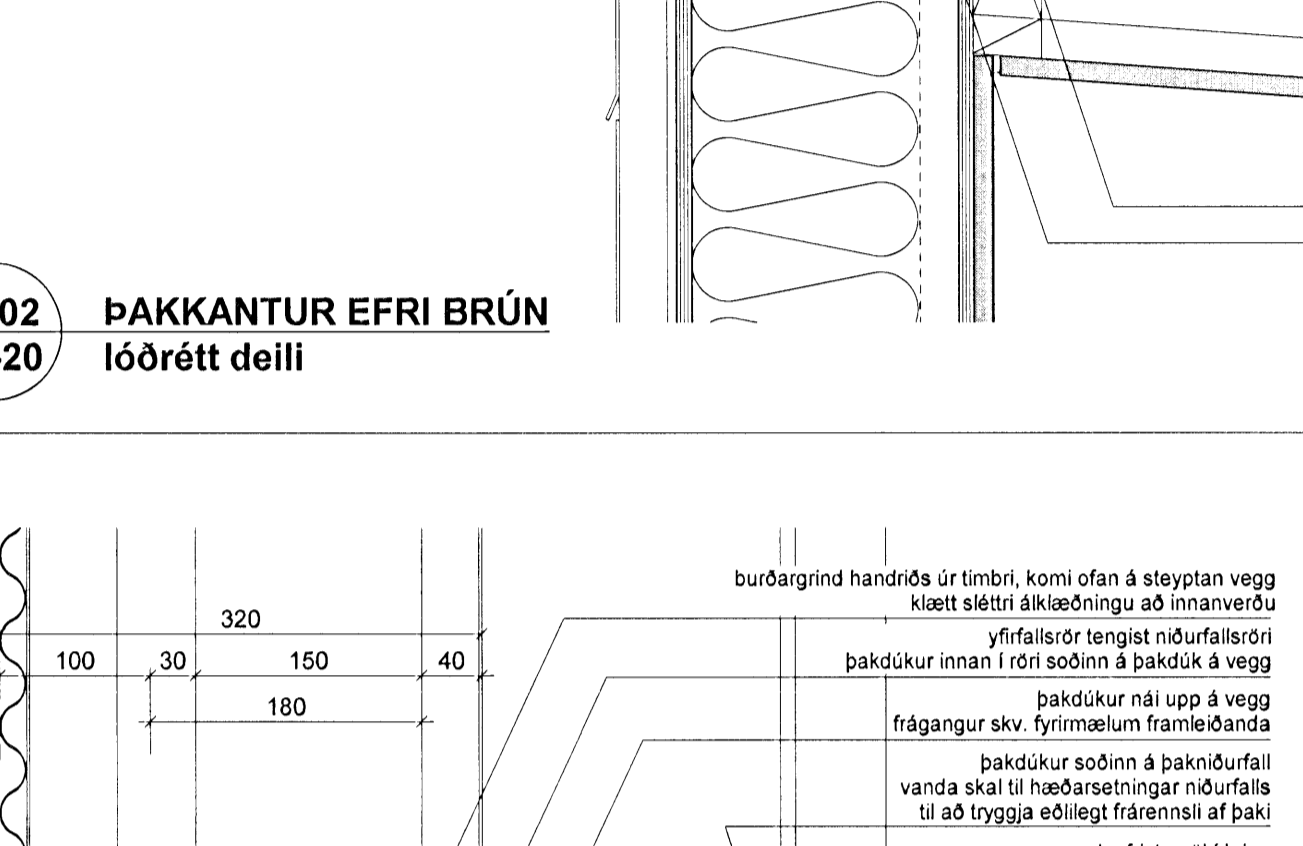
Y-01 ÞAKKANTUR NEÐRI BRÚN
20-20 lóðrétt deili



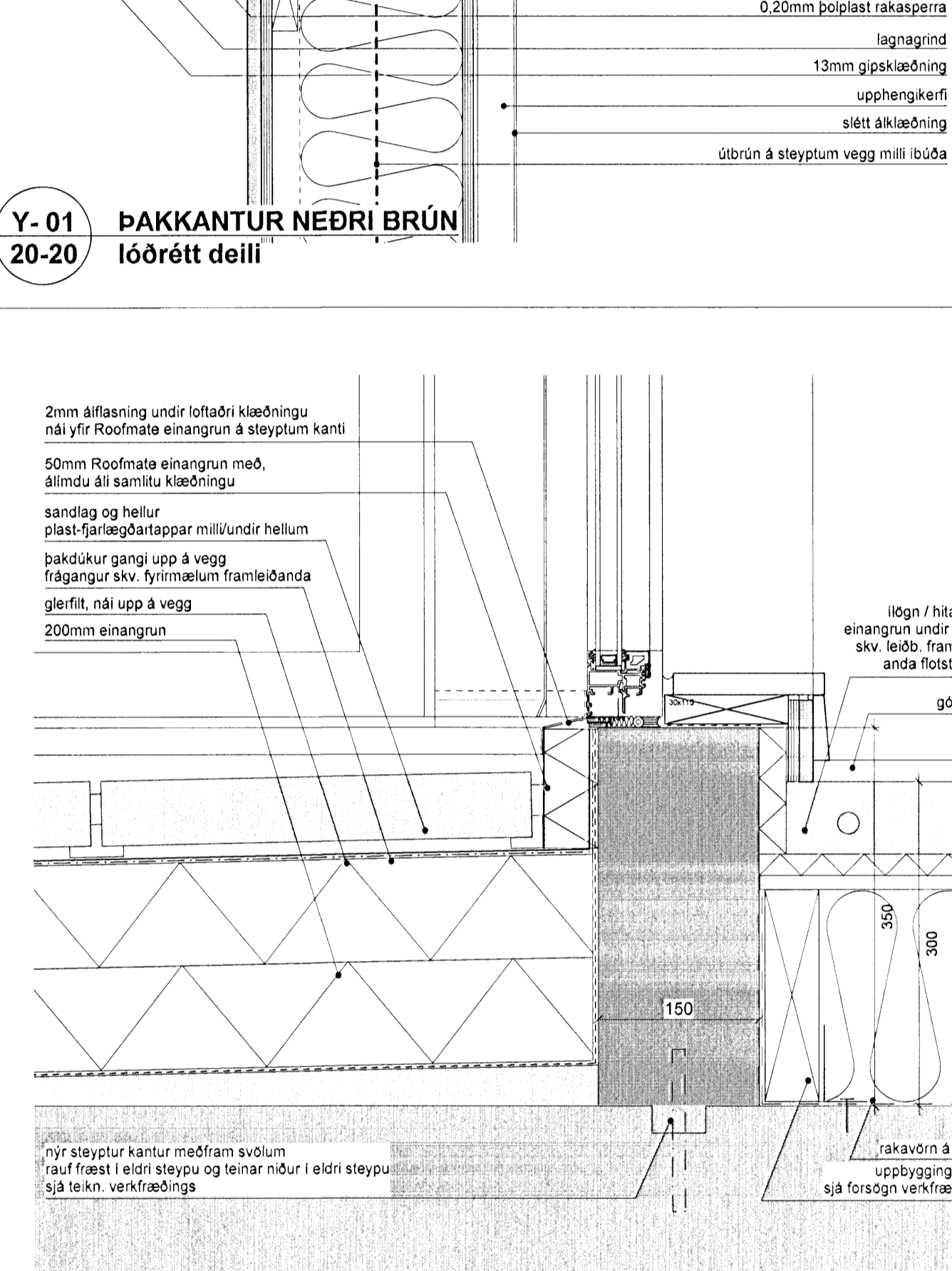
Y-06 GLUGGI - EFRA STYKKI
20-20 lóðrétt deili



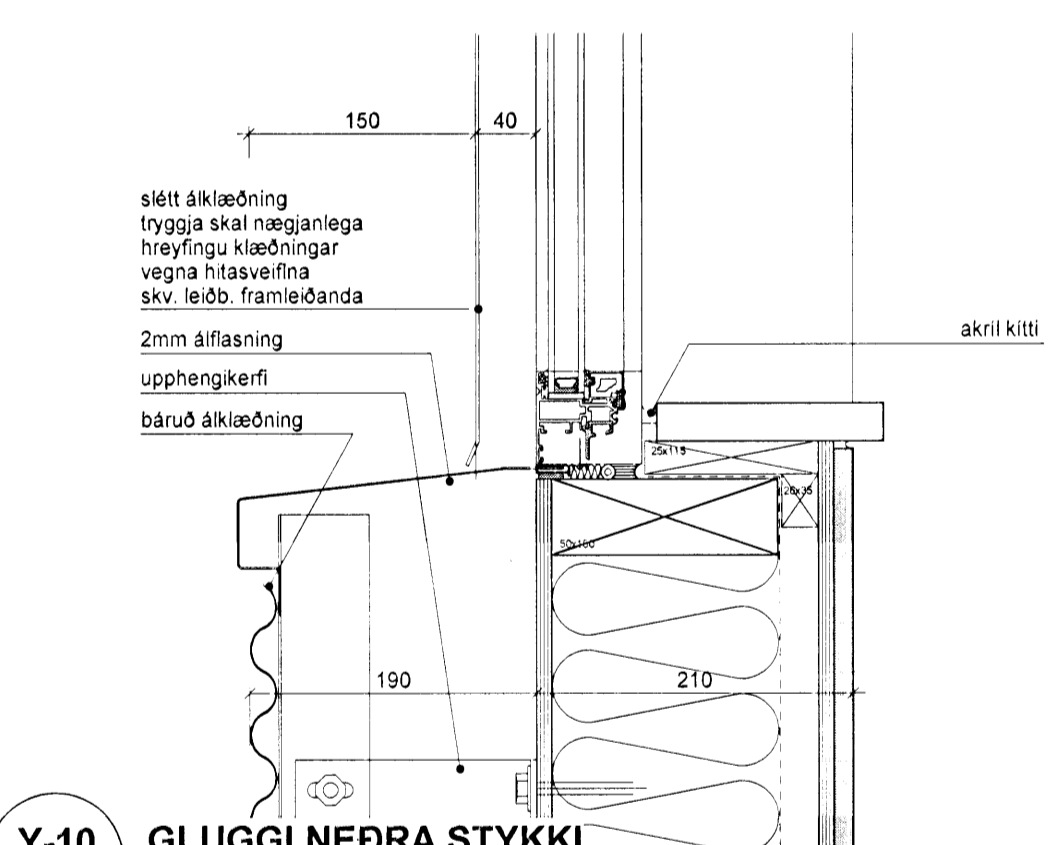
Y-05 ÞAK VIÐ BITA
20-20 lóðrétt deili



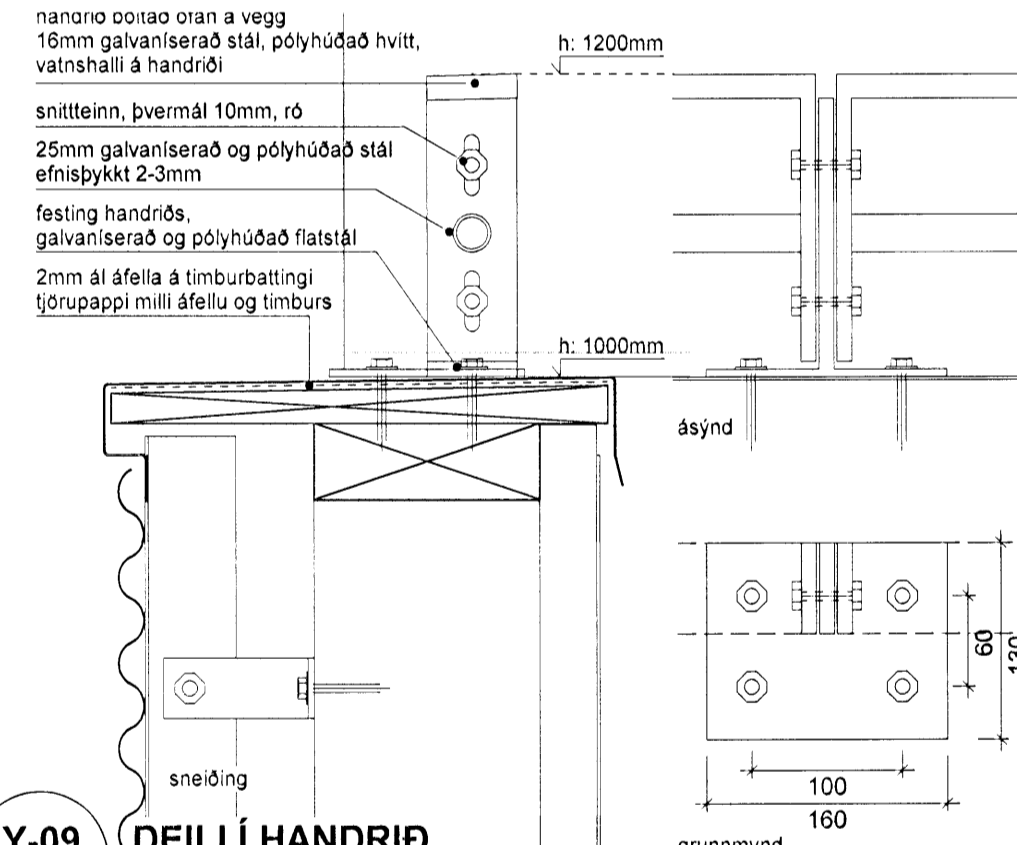
Y-08 SVALAGÓLF - NIÐURFALL
20-20 lóðrétt deili



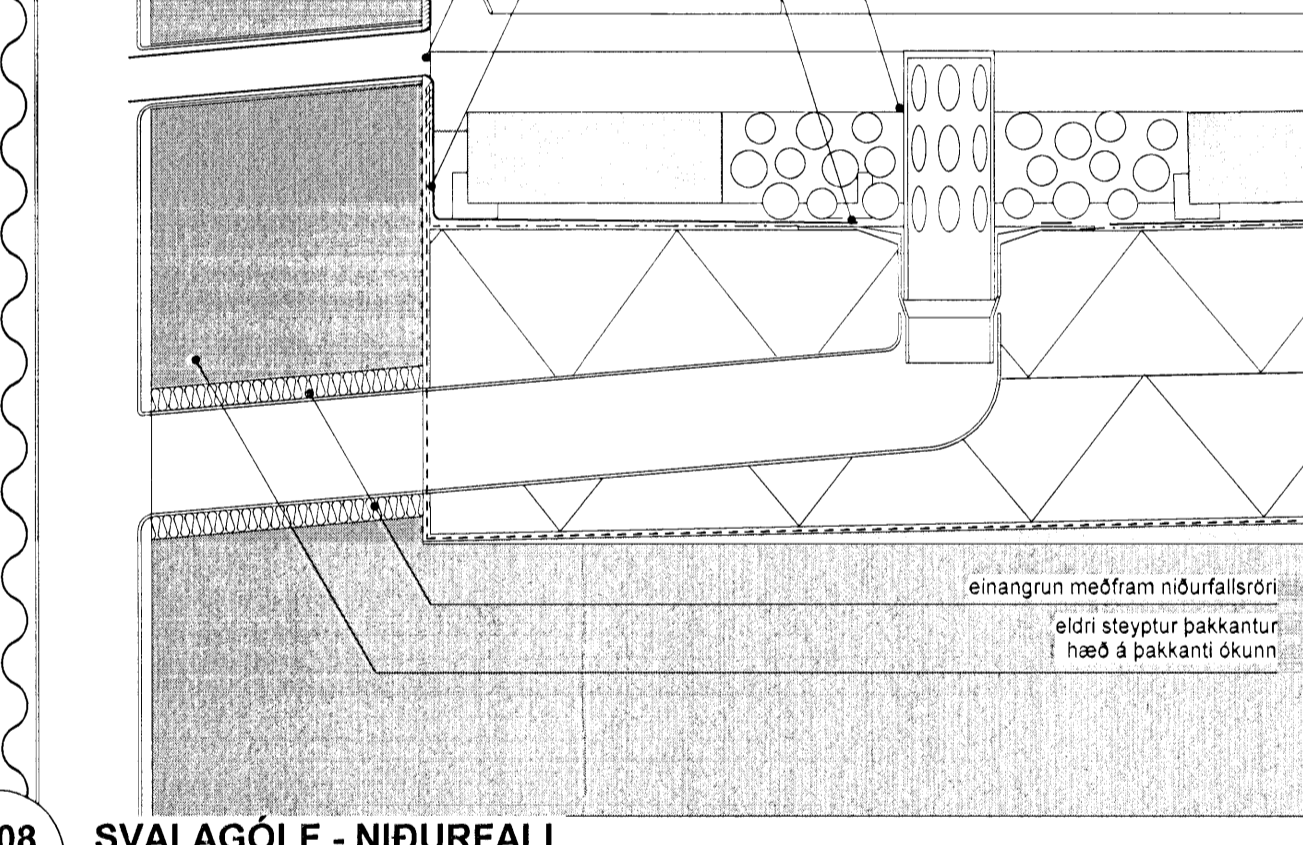
Y-07 SVALAGÓLF - GLUGGI / HURÐ
20-20 lóðrétt deili



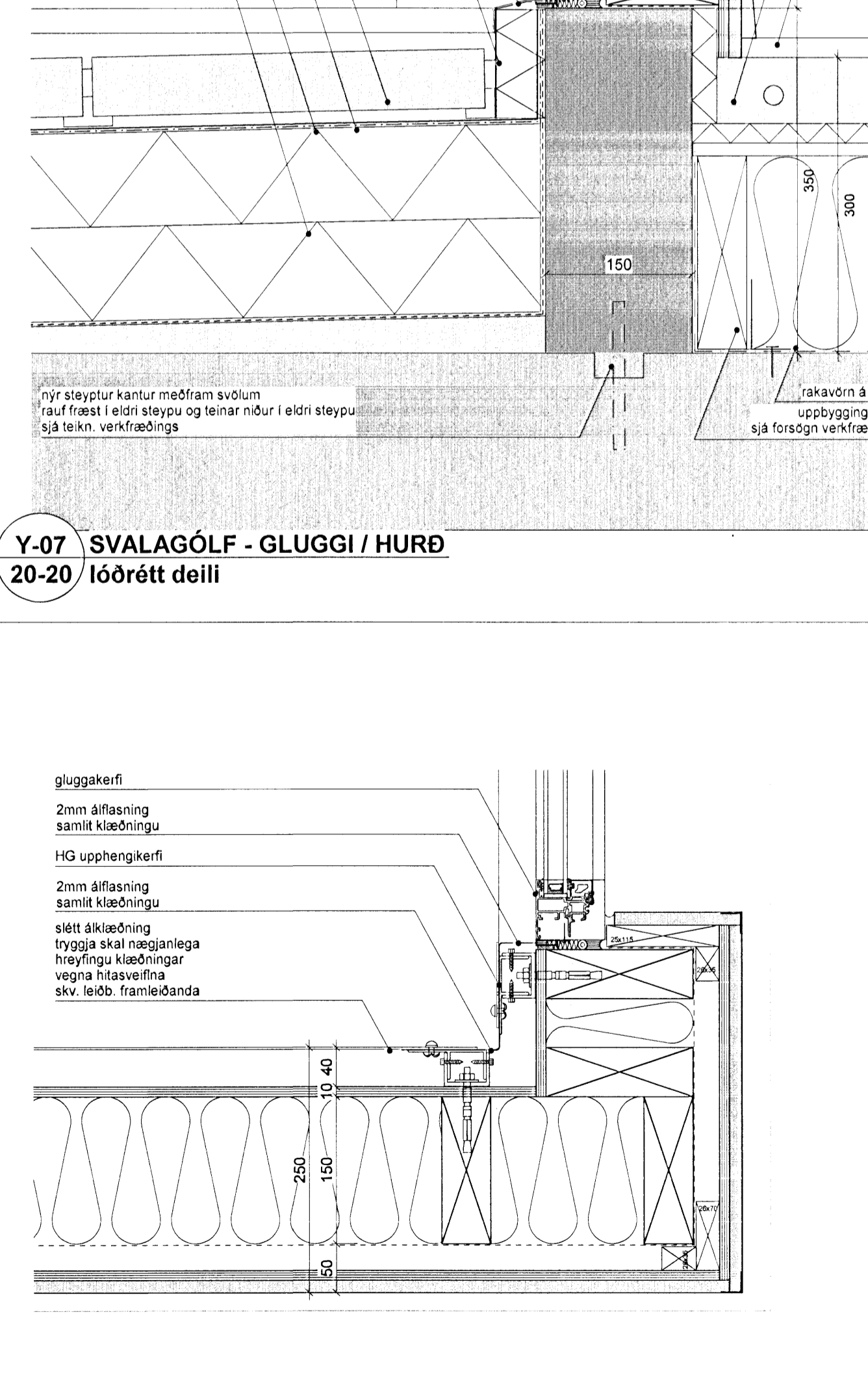
Y-10 GLUGGI NEÐRA STYKKI
20-20 lóðrétt deili



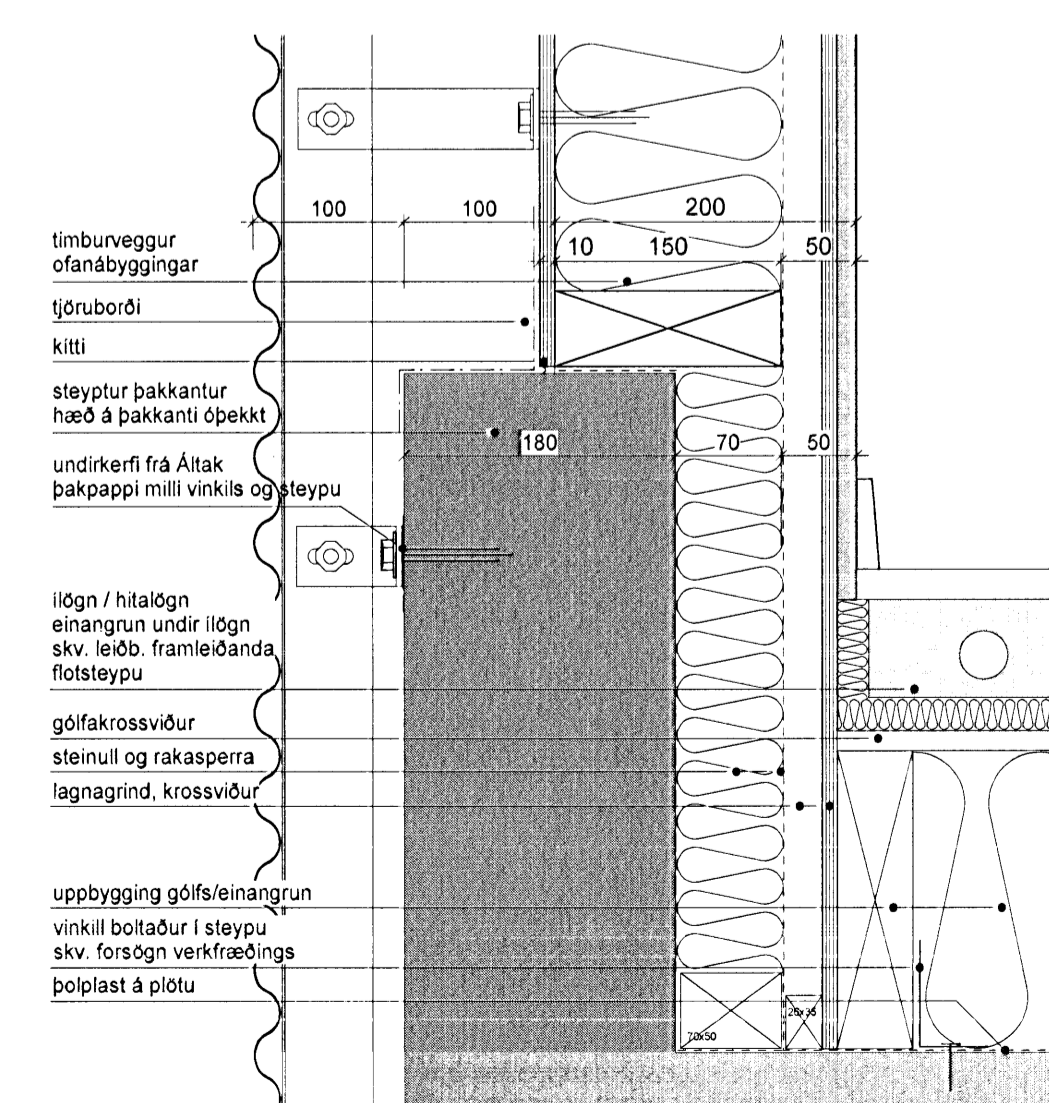
Y-09 DEILI Í HANDRÍÐ
20-20 lóðrétt deili



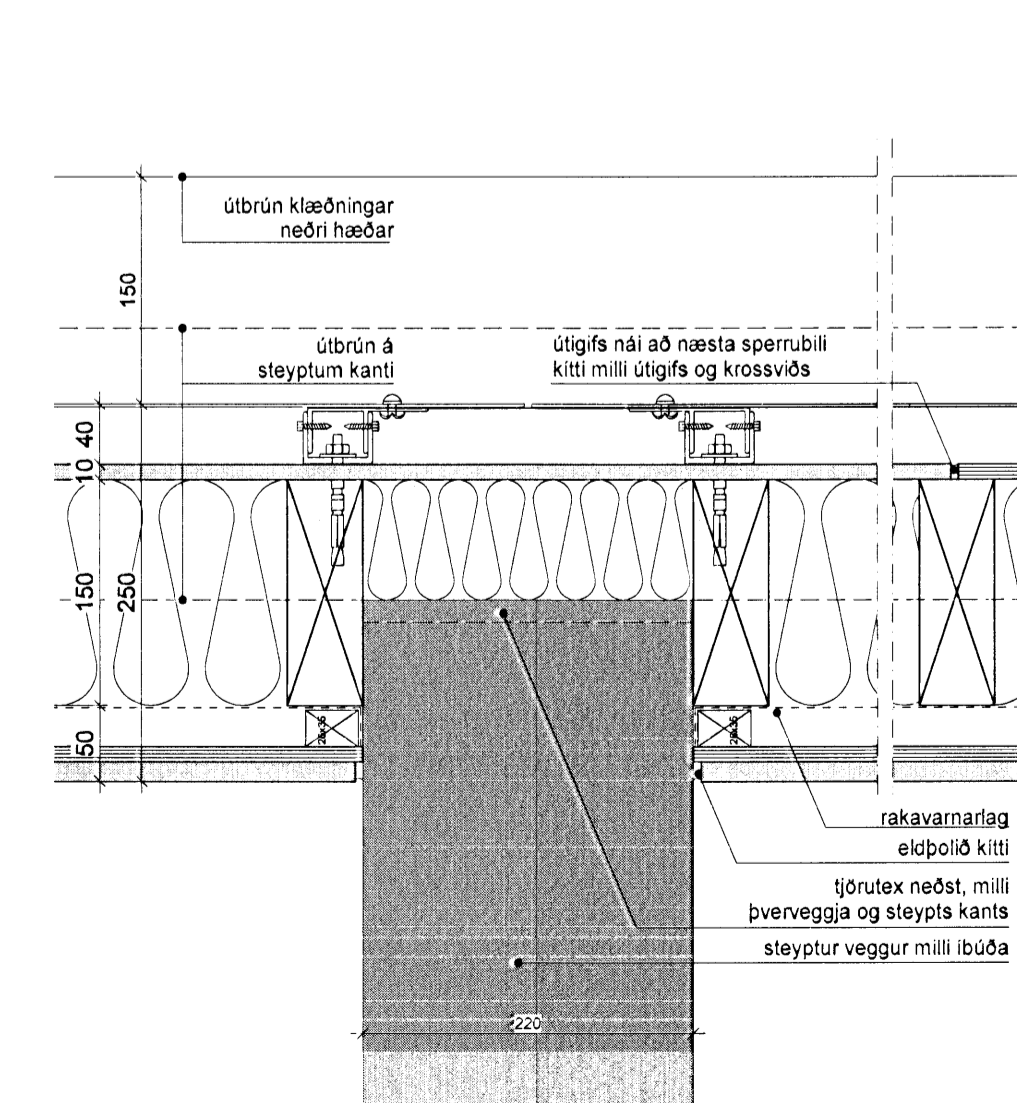
X-02 ÚTHORN
20-21/2 lárétt deili



X-01 INNHORN
20-21/2 lárétt deili



Y-11 STEYPTUR VEGGUR v. TIMBURVEGGUR
20-30/1 lóðrétt deili



X-03 FRÁGANGUR VIÐ STEYPTAN VEGG
20-20 lárétt deili



Litur áklæðningar og flásinga verði valinn í samráði við arkitekta

Leita skal samþykks arkitekta varðandi val á þakdúk.

Almennt:
Öll mál sannreynist á staðnum.
Ef misræmi kemur upp í teikningum skal hafa samráð við hönnuð eða eflitismann.
Öll mál eru í millimetrum.

endurskoðun:	dags:	teikn.:	yfirf.:
A:	vöðbygging einangruð að utan	14.04.08	IH/SM IH/SM
B:	vöðbygging úr timbri	18.08.08	IH/SM IH/SM
C:			

verk: **Smyrlahraun 43-47**

landnúmer: 122310
staðgreinir: 7960 0430
efni teikningar: lóðrétt deili

verknúmer:	07-012	mælikvarði:	1:5
skjalheiti:	-	frumstærð blaðs:	A2
teiknað:	IH/SM	dagsetning:	20.02.2008
yfirfarir:	IH/SM	endurskoðað:	-

VERKTEIKNING teikn.nr: **41-01**

Bolholti 4
105 Reykjavík
kt: 431005-0340
sími: 578 3900
arktika@arktika.is
www.arktika.is

arktika
arkitektar
Sigrður Maack

Ingun Helga Hafstað arkitekt FAI
kt. 020861-7469
Sigrður Maack arkitekt
kt. 081163-4649