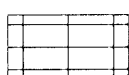



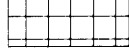
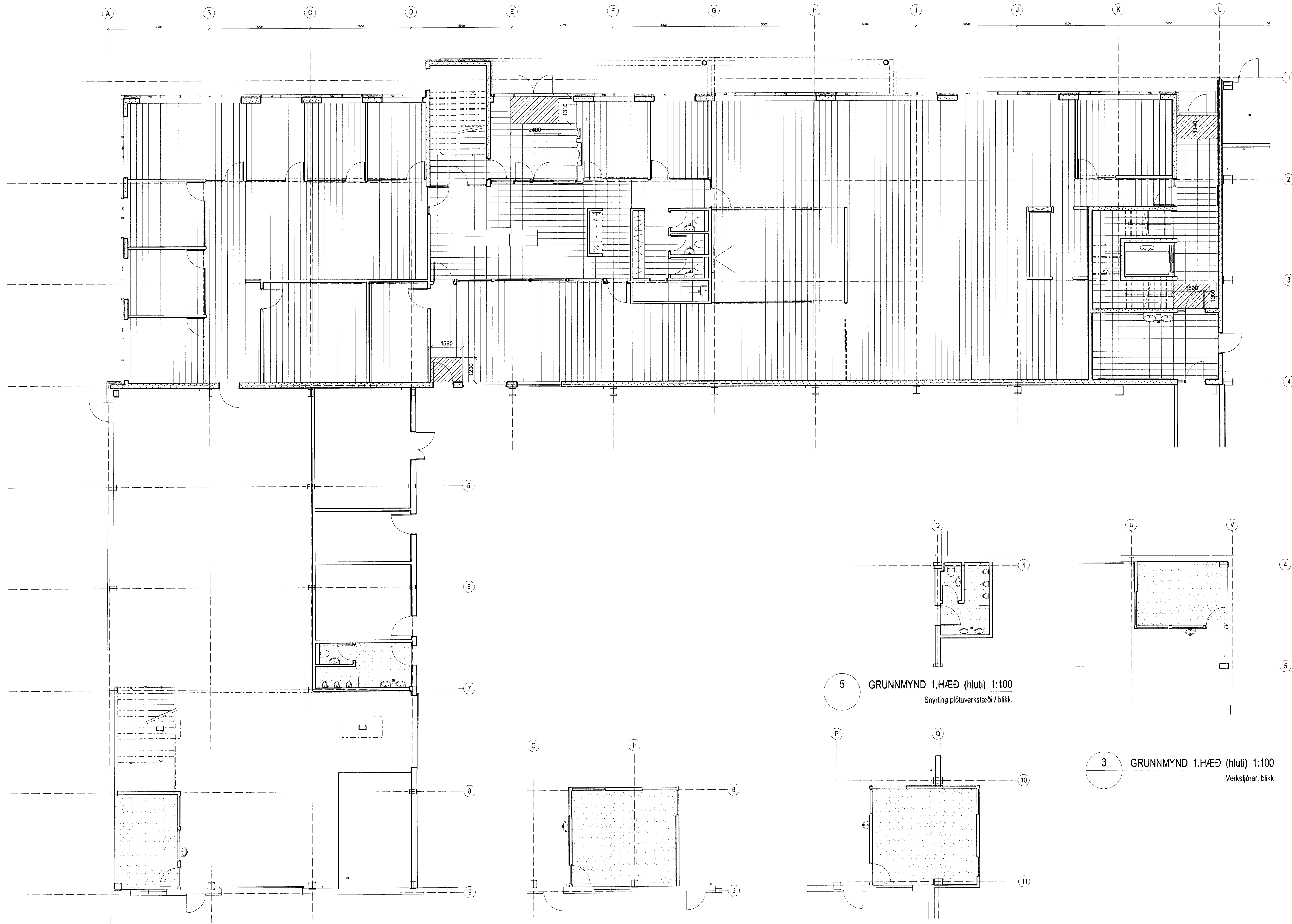


Skýringar:

-  Flísar 600x300mm  
Casagrande, Pietra Navia, Pietra di sardagna, Cala Luna  
(Flísabór), eða samberlegt
-  Linóleum dúkur  
Ardolium graphic 5312 libretto  
(Kjatar), eða samberlegt A
-  Epoxy Quartz Ultra 4000, litur 02,  
(Sérstærni Málarn), eða samberlegt
-  Náttúruleg burstamotta, Durcl  
(Besta) eða samberlegt
-  Flísar 300x300mm  
Casagrande, Pietra Navia, Pietra di sardagna, Cala Luna  
(Flísabór), eða samberlegt (töstuþolar)



1 GRUNNMYND 1.HÆÐ (hluti) 1:100  
Skrifstofur, tækendeild, afgreiðsla, verkstjórar

2 GRUNNMYND 1.HÆÐ (hluti) 1:100  
Verkstjórar véladeild / renniverkstæði.

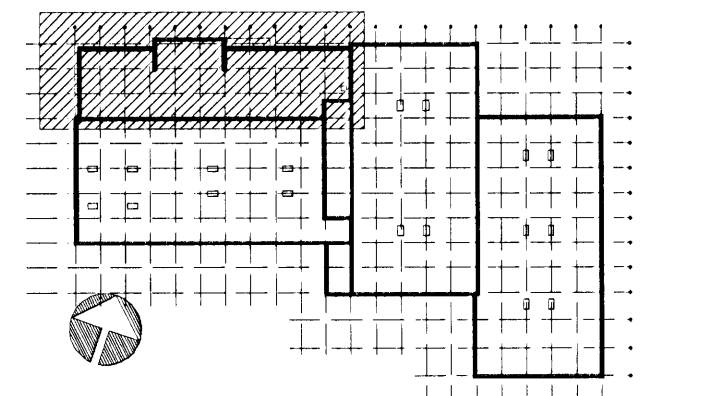
4 GRUNNMYND 1.HÆÐ (hluti) 1:100  
Verkstjórar plötuverkstæði, blökk / ryðfrítt.

5 GRUNNMYND 1.HÆÐ (hluti) 1:100  
Snyrting plötuverkstæði / blökk.

3 GRUNNMYND 1.HÆÐ (hluti) 1:100  
Verkstjórar, blökk


A	OI	HMH	19.09.2008
Tegund gólfvéka ávörðun			

ÚTGÁFA	TEIKNAD	ÍSAMPYKKT	LDAGS
BRUNNTEIKNAR			



ASK Arkitektar  
Geirgötu 9  
101 Reykjavík  
Sími 515 0300  
Fax 515 0319  
www.ask.is

Árftun aðalhönnuðar:  
*Henni M.*  
Hljófi Már Halldórsdóttir arkitekt FAI, kt. 301258-7049

GJÁHELLA 4, HAFNARFIRÐI HÉÐINN		 <b>ASK</b> ARKITEKTAR
VERKTEIKNINGAR		
GRUNNMYND 1. HÆÐ (hluti)		
GÓLFENI		
VERK NÚM.	NDMÉR TEIKNINGAR	ÚTGÁFA
06124	43-01	A