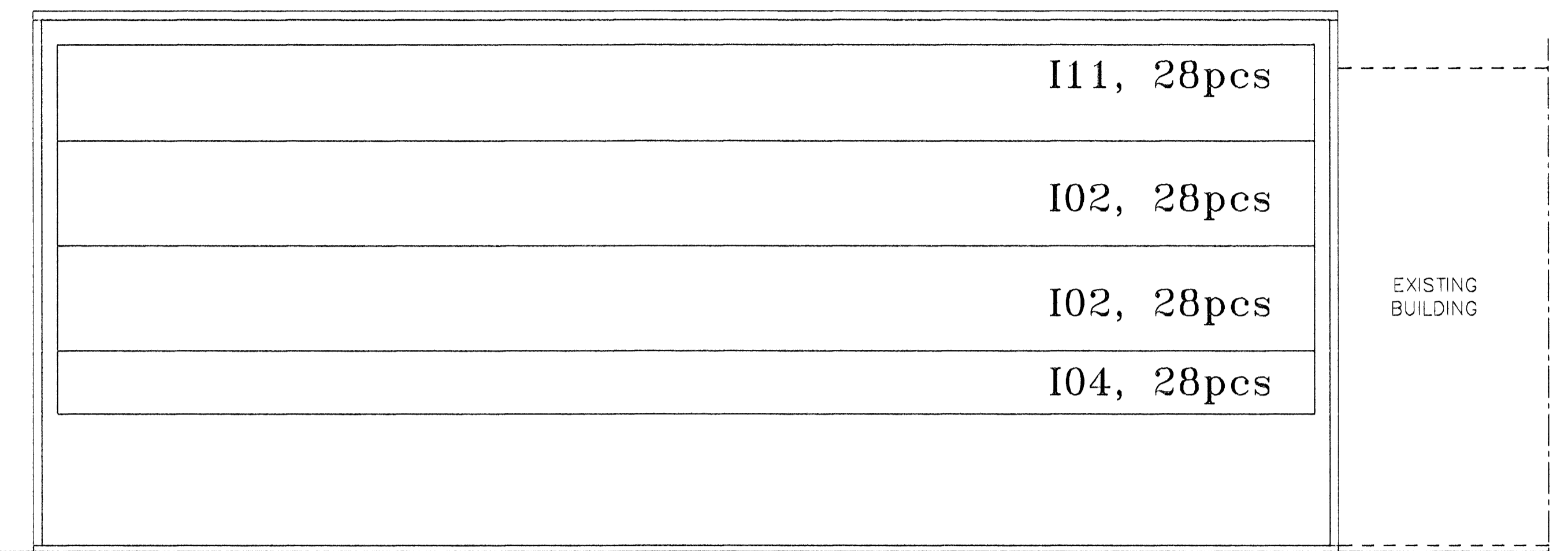
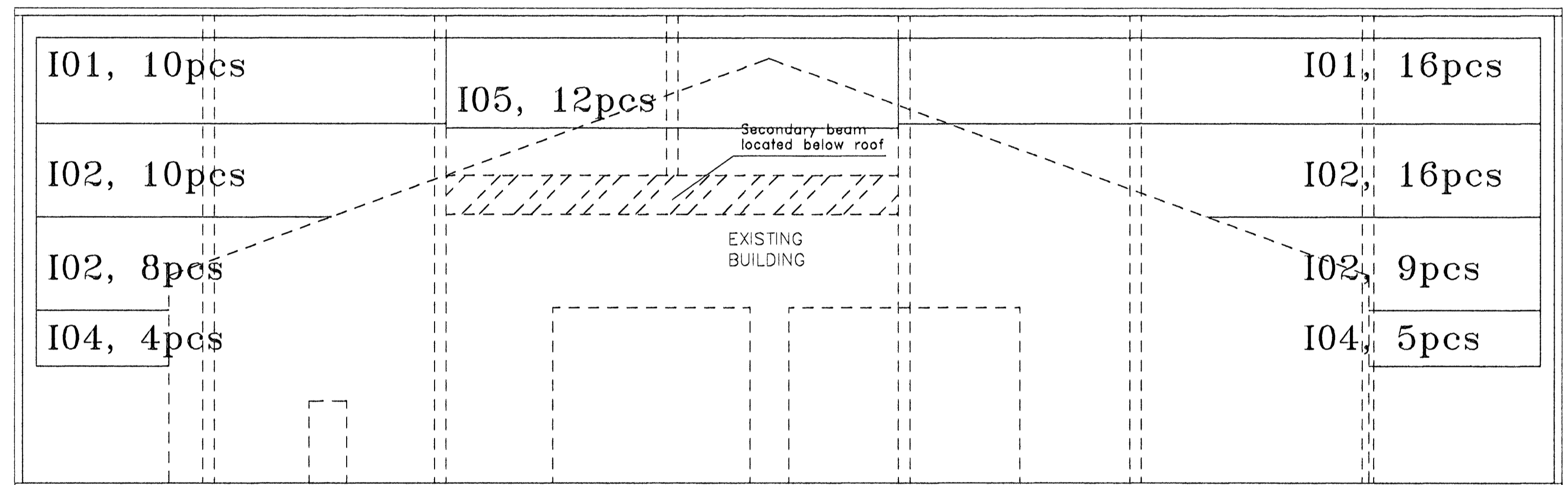


Facade to east

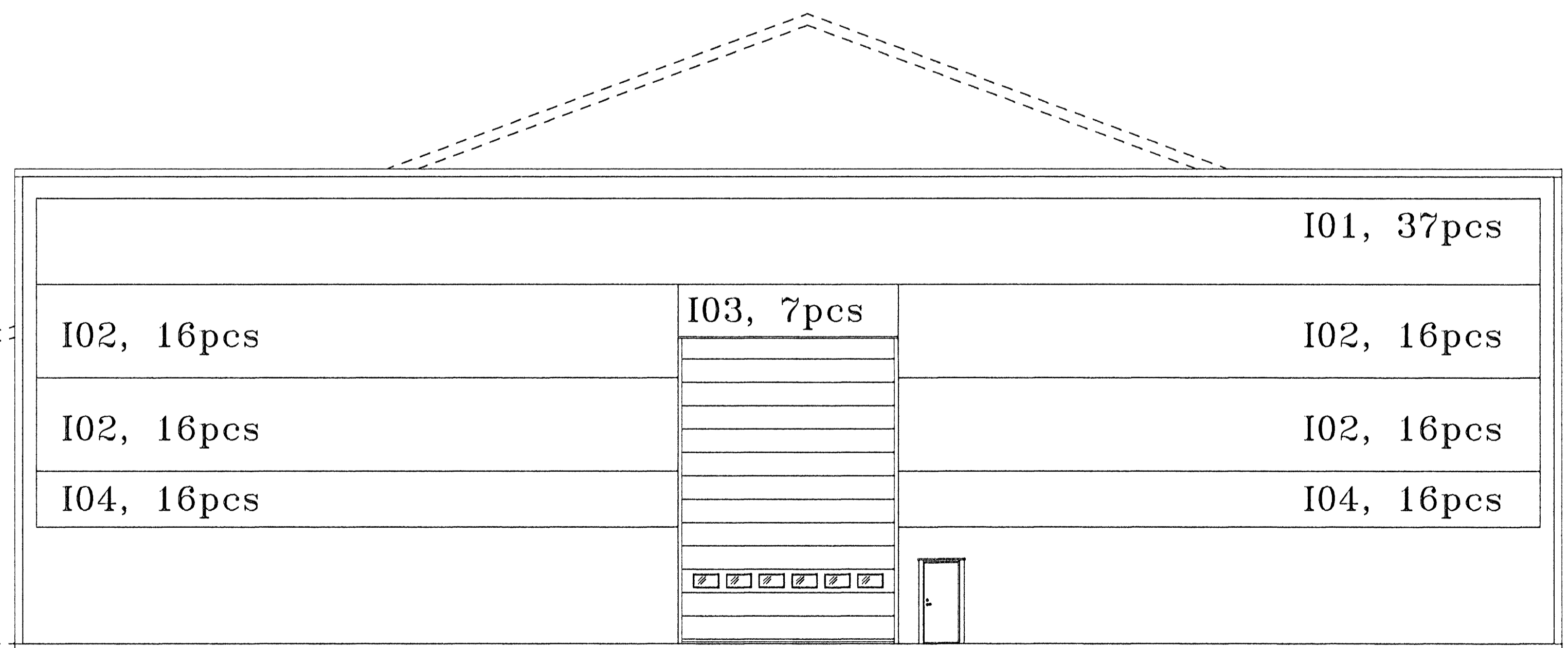


Facade to west



Facade to south

Samþykkt þann  
22 SEPTEMBER 2008  
Byggingarfulltrúinn í Hafnarfirði  
F.h. Hrólfur S. Gunnlaugsson



Facade to north

Fyrir hönd Conis ehf, kt. 600105-1400  
staðfestist að teikning þessi hefur verið  
yfirlitinn. Teikningin er í samræmi við  
íslenska staðla og reglugerðir.  
13 SEP 2008  
Kennitala

INSIDE PLATES

ARITUN HÖNDUÐAR Byggingarfulltrúinn í Hafnarfirði Hrólfur S. Gunnlaugsson 22 SEP 2008 149 CB		DAGI 22 SEP 2008	
A	SECONDARY BEAM	TNI	2008-07-04
REG	REGISTRATION	SIGN	DATE
BUILDER <b>Bergbella 1</b> Hafnarfirði		SALESMAN Peter Gustafsson DATE 2008-05-12 Peter Gustafsson	
FRONT VIEW			
SCALE	DRAWING NUMBER	REG	
1: 100	A-IS0009-2	A	

