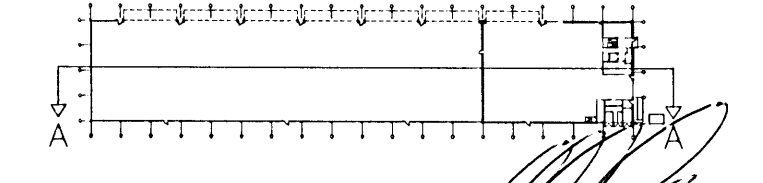


12.10.2005



Skýringar:  
Explanations:

**ARK ÍS** ehf

arkitektar ráðgjafar

Adasteinn Snorason arkitekt fái 161161-2769  
Egill Guðmundsson arkitekt fái 270152-6869  
Gísli Gíslason arkitekt fái 160657-4809  
Skólavörðustíg 11 101 reykjavík  
sími 511 2060  
fax 511 2066  
netfang arkis@ark.is

A	Reyndarteikning	08.06.05	hi
3	Rífjaplötum breitt, stigi lækkaður, hús hækkad í kóta 12.00	27.02.04	hk
2	Rífjaplötur í þaki, gluggar ,málsetningar	28.01.04	hk
1	Hæð húss lækkuð um 200mm / kótum breytt	09.12.03	hk
Breyt. Rev.	Breyting Revision	Dags Date	Samb. Approved
Tav.teikningar nr. ISAL Ref.drawing no. of ISAL		Samsettn.teikningar nr. ISAL Assembly drawing no. of ISAL	

This drawing is the property of the Alcan Iceland Ltd. and handed out for personal use only. It may neither be copied nor made available to others without permission of the Alcan Iceland Ltd. The receiver is liable for any misuse.

Fjöldi stykka Number of pieces	Hlutur Object	Atriði Item	Efni Material	eo.stk Weight	total.f heild (kg) Þyngd	Athugasemdir Remarks
IV III II I	Mhl.01 Víkurgata 7 / ál-og tækjageymsla					
	Skurðmynd A-A					
	ARKÍS ehf					
	ALCAN PRIMARY METAL EUROPE					
	ISAL					
	IS-222 Halnarfordur					
	168531					