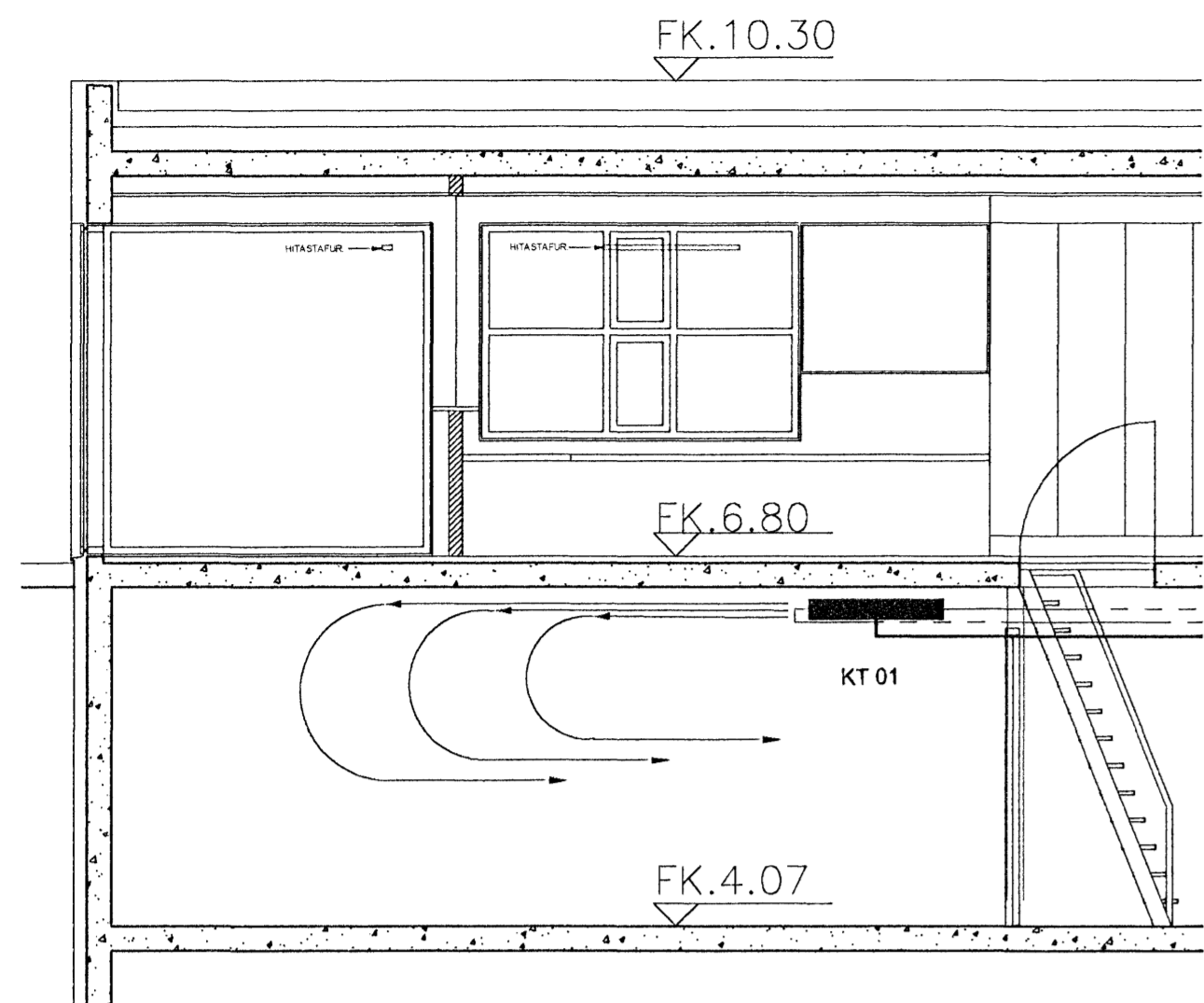
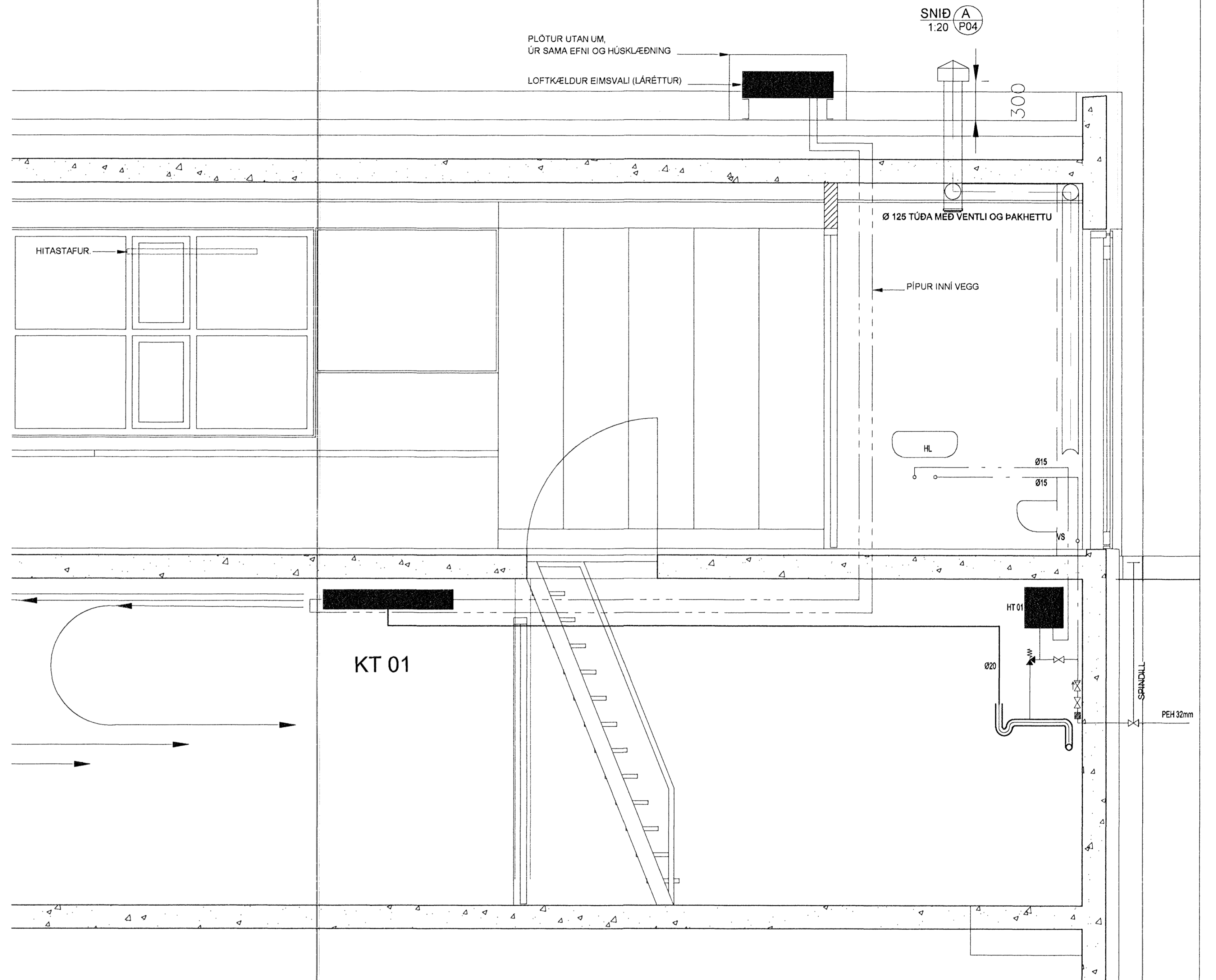
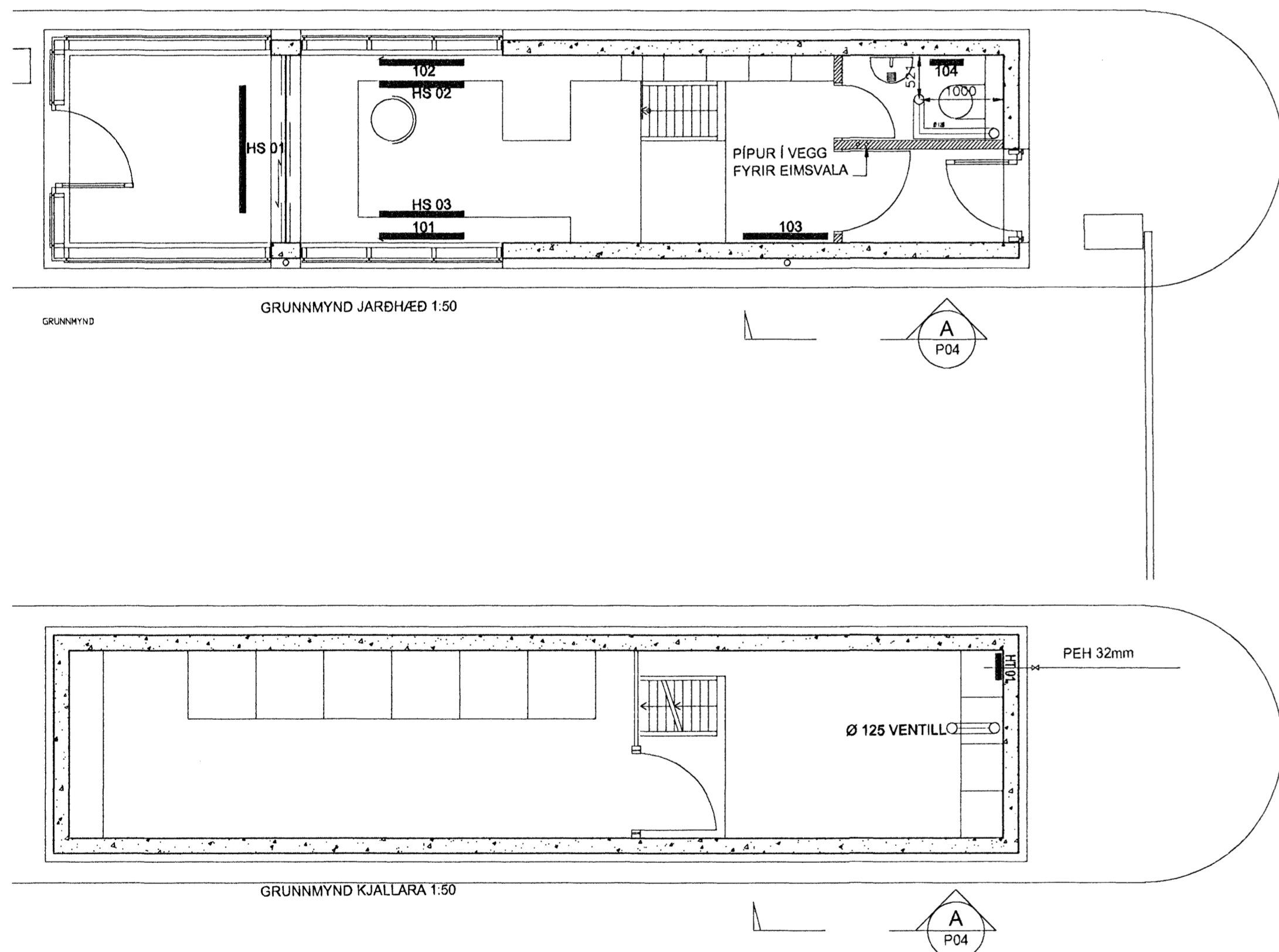


Format A1 (841x594 mm) is 20 mm outside of this frame



HLIÐHÚS.		TÆKJASKRÁ
OFN NR	GERÐ.	STÆRÐIR LxH / WATT
101	OLIUFYLLTUR RAFM.OFN	900x600. 1000W. 240 V.
102	OLIUFYLLTUR RAFM.OFN	900x600. 1000W. 240 V.
103	OLIUFYLLTUR RAFM.OFN	900x600. 1000W. 240 V.
104	OLIUFYLLTUR RAFM.OFN	400x600. 250W. 240 V.
EIH NR	GERÐ.	STÆRÐIR LxHxB / WATT
HS 01	HITASTAFUR	1880x40x7.5. 1500W. 240 V.
HS 02	HITASTAFUR	1170x40x7.5. 1000W. 240 V.
HS 03	HITASTAFUR	1170x40x7.5. 1000W. 240 V.
HT NR	GERÐ.	STÆRÐIR HxB / WATT
HT 01	NEYSLUV. HITATÚPA 15-20L.	(480x315). 12-1800W. 240 V.
KT NR	GERÐ.	STÆRÐIR HxB / WATT
KT 01	KÆLIKERFI ÁSAMT LÖGNUM	5 kW (1.FASA 10 AMP 2kW)



23.08.2005
70

Handwritten signature and notes

Skýringar:
Explanations:

Fjöldi stúkkja Number of pieces		Hlutur Object		Atriði Item		Efni Material		Gæsla Weight		Hlutf. hlúð (kg) Bygð.		Afhugasemdir Remarks	
IV	III	II	I	HLIÐHÚS ALCAN		HITA- OG NEYSLUVATNSLAGNIR		4200 UZ10		150/1:20			
Breytingar Revisions		Dagur Date		Samb. / Samþ. Checked / Approved		Stærð Scale		Kostnaður Cost		Tilvitn. / Tilk. nr. Drawn / No. of ISAL		Breyt./Rev.	
A Breytingar á neysluvatnslögnum og loftræsingum		16.08.2005		KMJ		A1		4200 UZ10		04752-P06		1	
Tilk. nr. Drawn		Samb. / Samþ. Checked / Approved		Tilk. nr. Drawn		Tilk. nr. Drawn		Tilk. nr. Drawn		Tilk. nr. Drawn		Tilk. nr. Drawn	
Tilk. nr. Drawn		Tilk. nr. Drawn		Tilk. nr. Drawn		Tilk. nr. Drawn		Tilk. nr. Drawn		Tilk. nr. Drawn		Tilk. nr. Drawn	

This drawing is the property of the Alcan Iceland Ltd. and handed out for personal use only. It may neither be copied nor made available to others without permission of the Alcan Iceland Ltd. The receiver is liable for any misuse.

