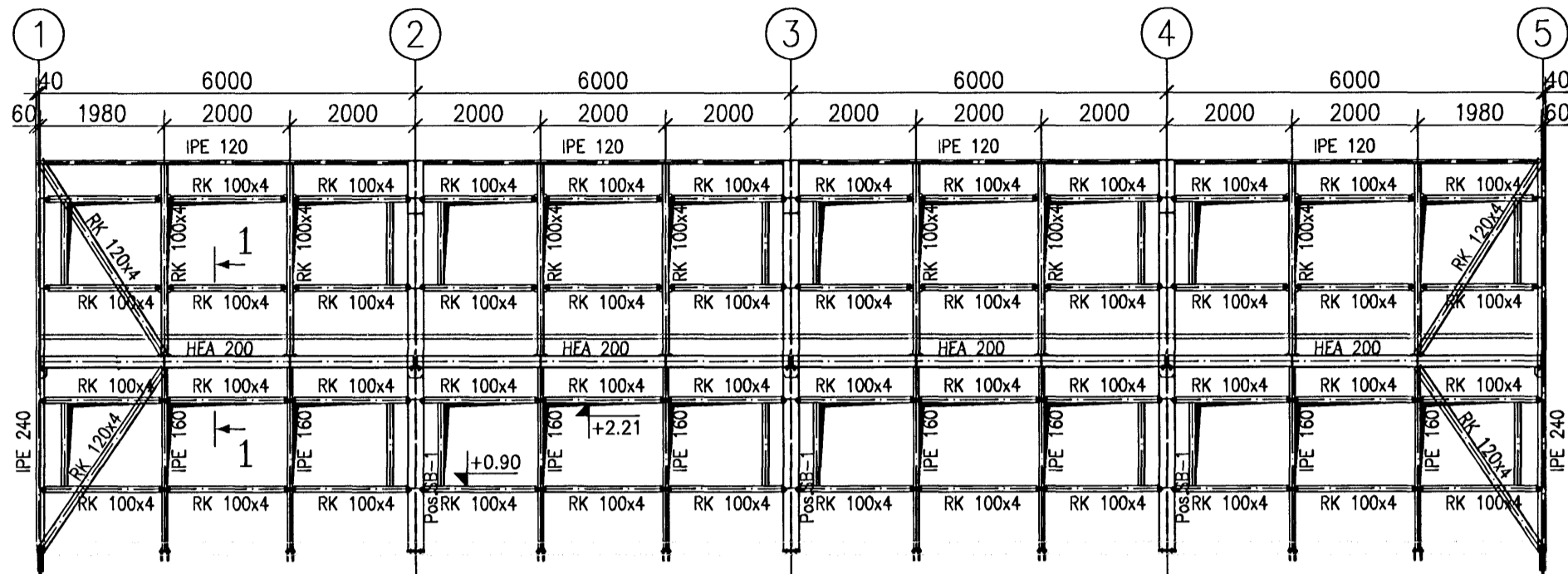
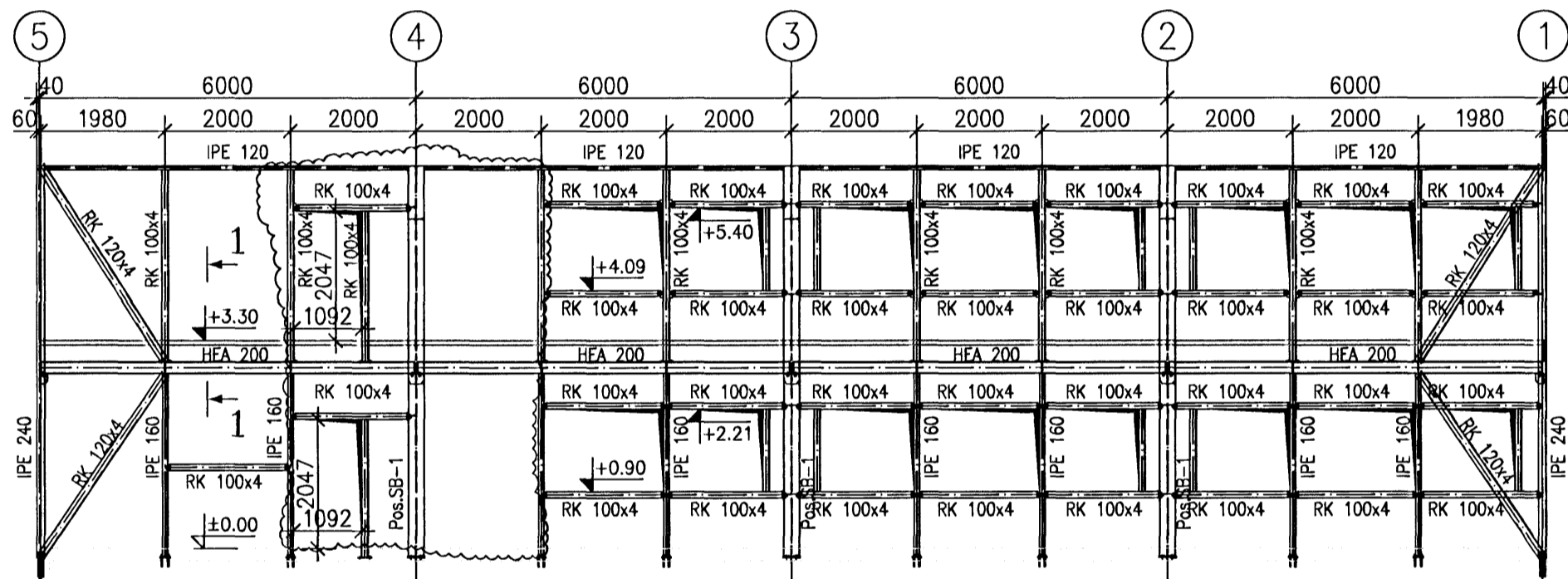


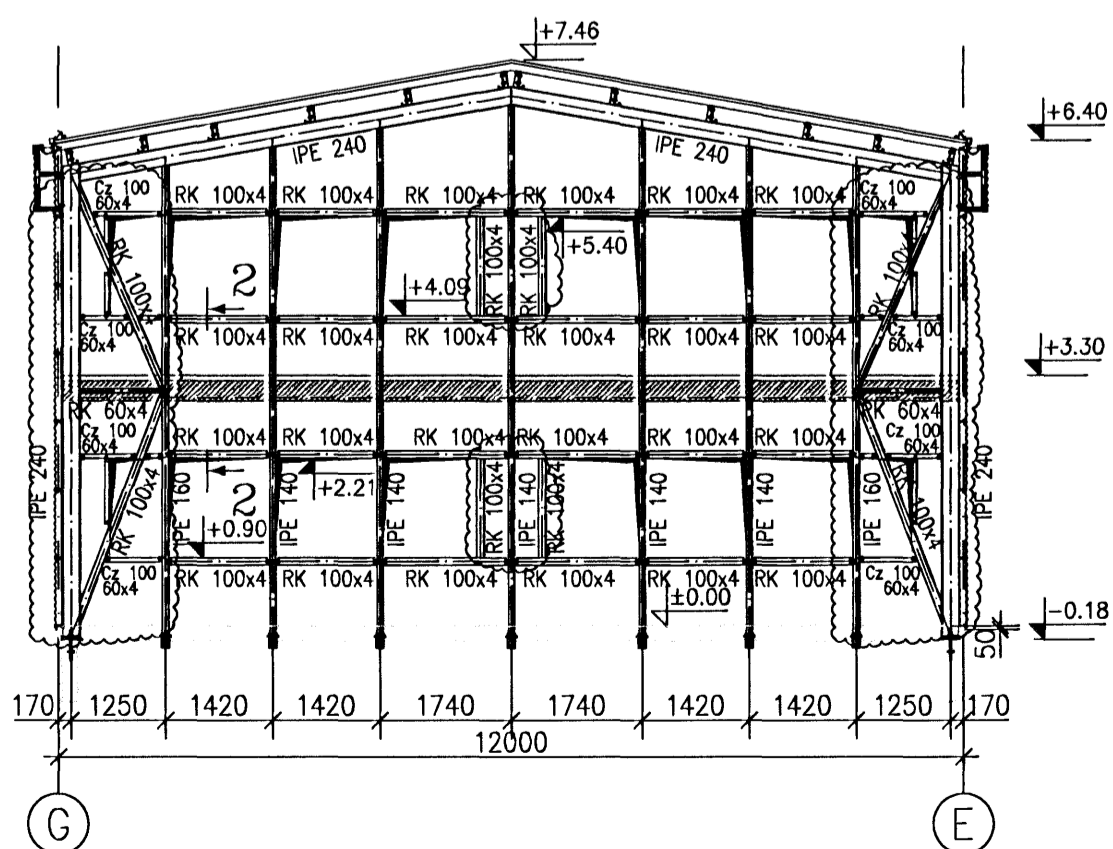
WALL IN AXIS G – OFFICE
SCALE 1:100



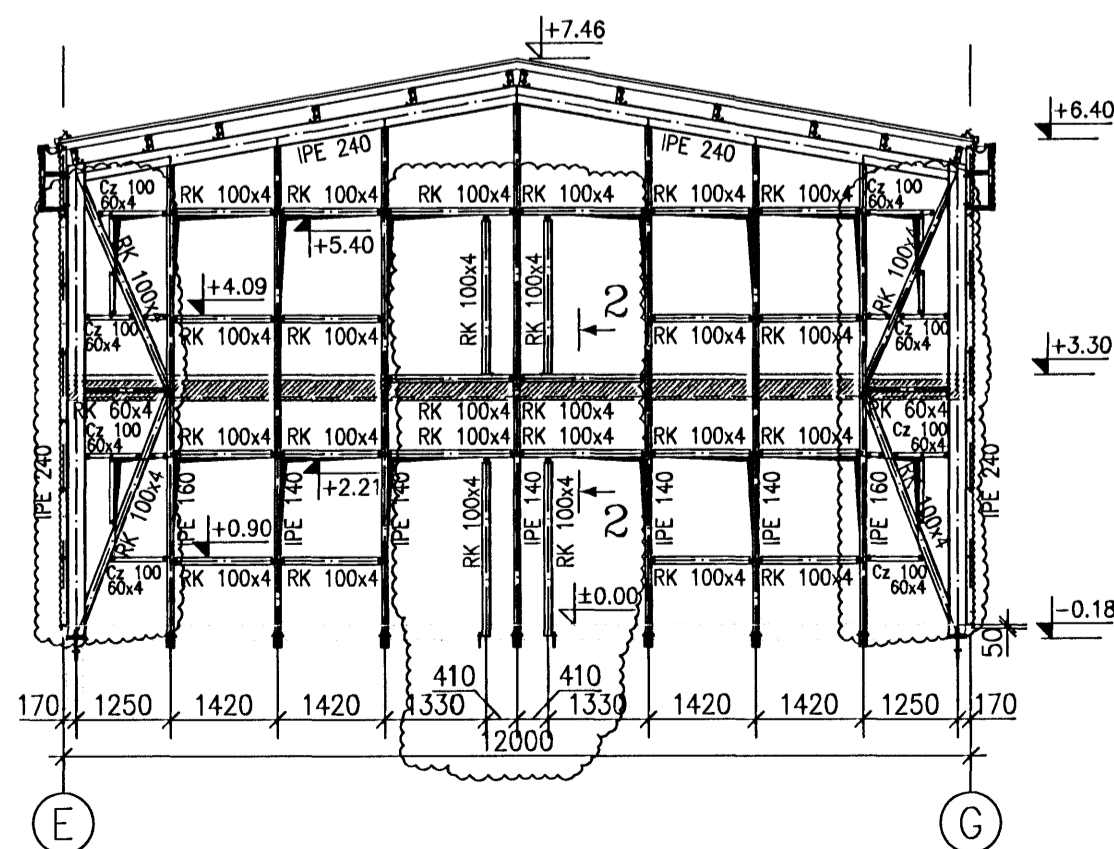
WALL IN AXIS E – OFFICE
SCALE 1:100



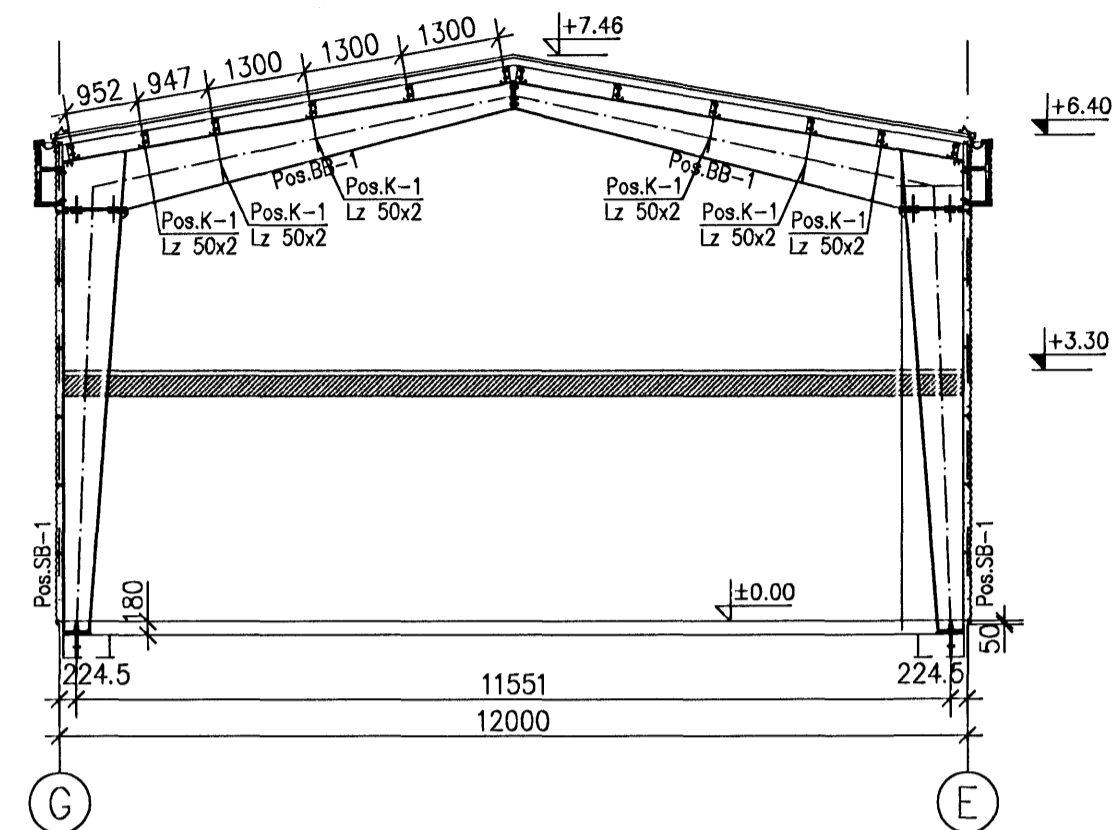
FRAME IN AXIS 5 – OFFICE
SCALE 1:100



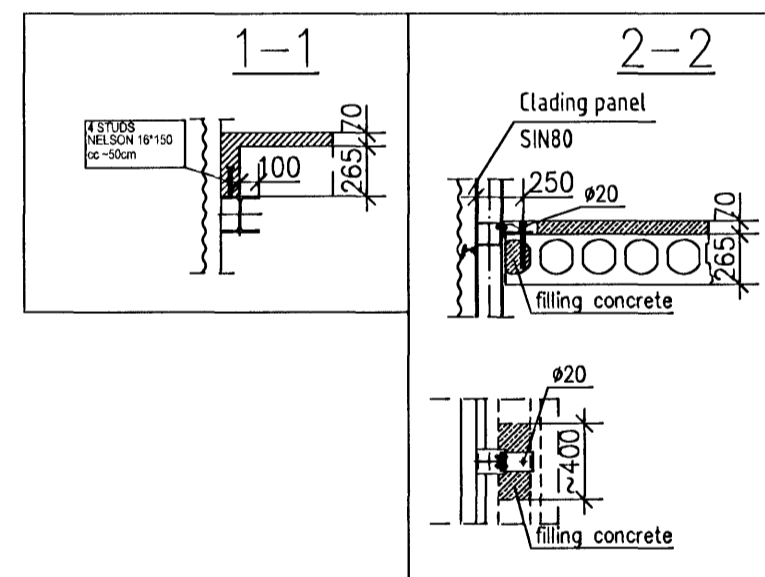
FRAME IN AXIS 1 – OFFICE
SCALE 1:100



FRAME IN AXIS 2,3,4 – OFFICE
SCALE 1:100



POS.	HIGHT/WEB THICKNESS/FLANGE WIDE/FLANGE THICKNESS	STEEL
SB-1	350-800/8/250/10	S355
BB-1	350-800/8/250/10	S355



Steel S355
Bolts cl. 8.8

ALL BUTT JOINTS THAT ARE NOT DESCRIBED OUGHT TO BE EXECUTED IN THICKNESS OF THINNER FROM CONNECTED ELEMENTS

ALL FILLET WELDS THAT ARE NOT DESCRIBED OUGHT TO BE EXECUTED IN THICKNESS:

- ONE-SIDED JOINTS - 0,7t₁ } but 2,5mm < a < 5mm

- TWO-SIDED JOINTS - 0,5t₁ }

WHERE: t₁ - THICKNESS OF THINNER FROM CONNECTED ELEMENTS

1. STRUCTURE CLASS "2" ACC. TO PN-B-06200:2002

2. BOLTS
- FOR SIMPLE CONNECTIONS OF CL 8.8 ACC. TO DIN 7990 - galvanized cell
- FOR COMPRESSED CONNECTIONS OF CL 10.9 ACC. TO DIN 6914 - galvanized cell

THE MOMENT OF SCREW HOME AND METHOD OF LUBRICATION - ACC. TO BOLTS' MANUFACTURER (i.e. PEINER HV M20 bolt of class 10.9, lubricated originally MoS, screw home moment 450 Nm)

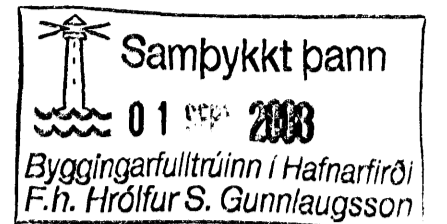
3. ELEMENTS TOLERANCE - MINUS

4. BUTT JOINTS OUGHT TO BE CONTROLLED WITH FLAW DETECTOR

level ±0,00=h=31,95m

Revision	Date	Change
C	12.03.2008	CHANGES ARE MARKED BY THE CLOUDS
B	27.02.2008	CHANGES ARE MARKED BY THE CLOUDS
A	04.02.2008	CHANGES ARE MARKED BY THE CLOUDS

Documentation Stage: Construction design	Branch: Steel Construction	Date: 2008-01-29
Object, Name and Address: -	Drawing name: FRAMES PLAN- OFFICE	Scale: 1:100 1:10
RUUKKI Ruukki Construction Polska Sp. z o.o. ul. Towarowa 35 61-869 Poznań POLSKA tel +48 61 85 12 300 fax +48 61 85 12 310 www.ruukki.com.pl		RST Net Álfréllu 6 221 Hafnarfjörður
Finnmap Polska ul. Wyzynskiego 1/1 10-457 Olsztyn POLSKA tel +48 89 533 31 42 fax +48 89 533 31 42 www.fmcgroup.pl		
Designed by: Piotr Walosik	Prepared by: Bartosz Regulski	Project No.:
Verified by: Krzysztof Bednarski		Drawing No.:
		02.1000
		005
		Rev: C



Eyfe Linn
23164-3919

Línuhönnun
consulting engineers
Sudurlandsbraut 4A, IS-108 Reykjavík
tel: +354 565 1500, fax: +354 565 1501

Ágúst Þórunn