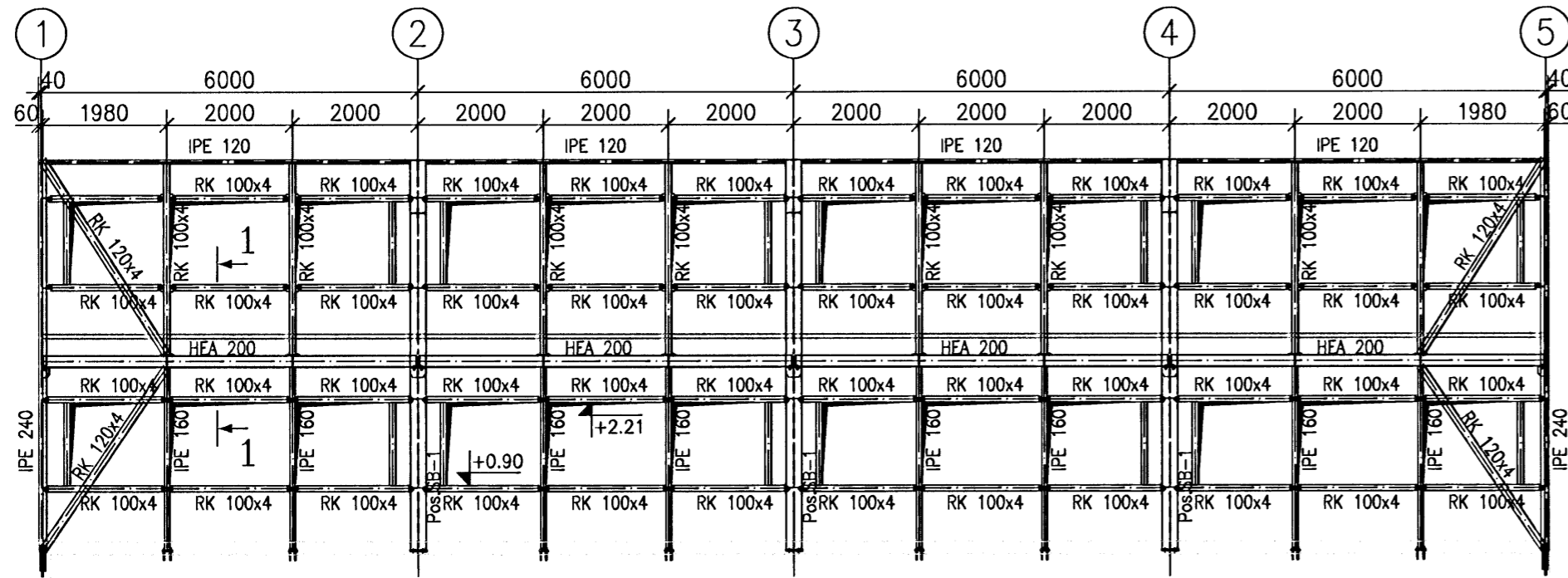
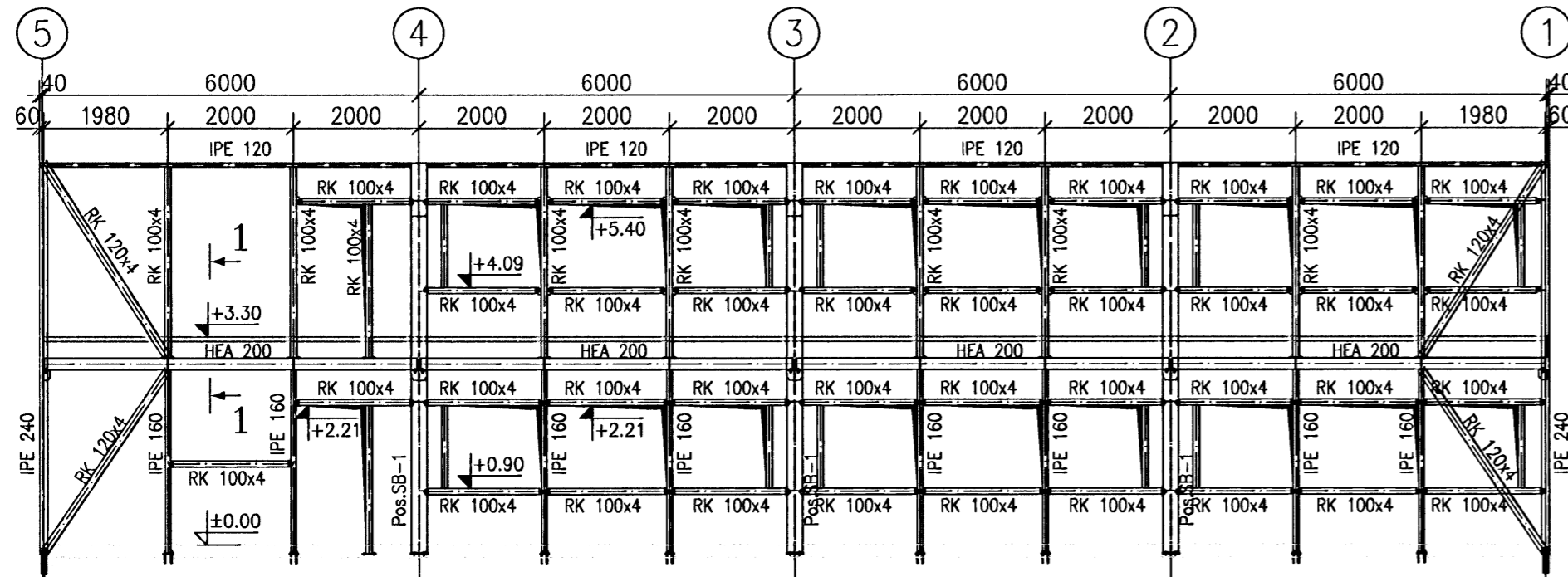


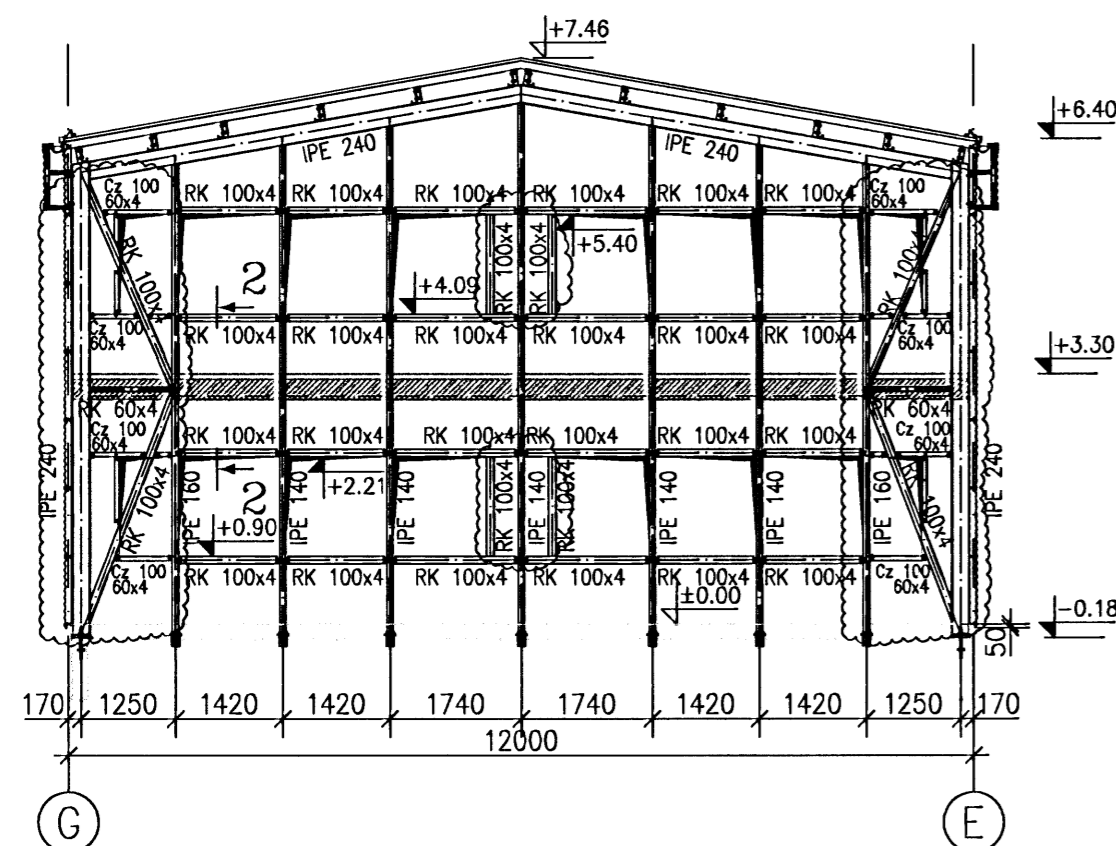
WALL IN AXIS G – OFFICE
SCALE 1:100



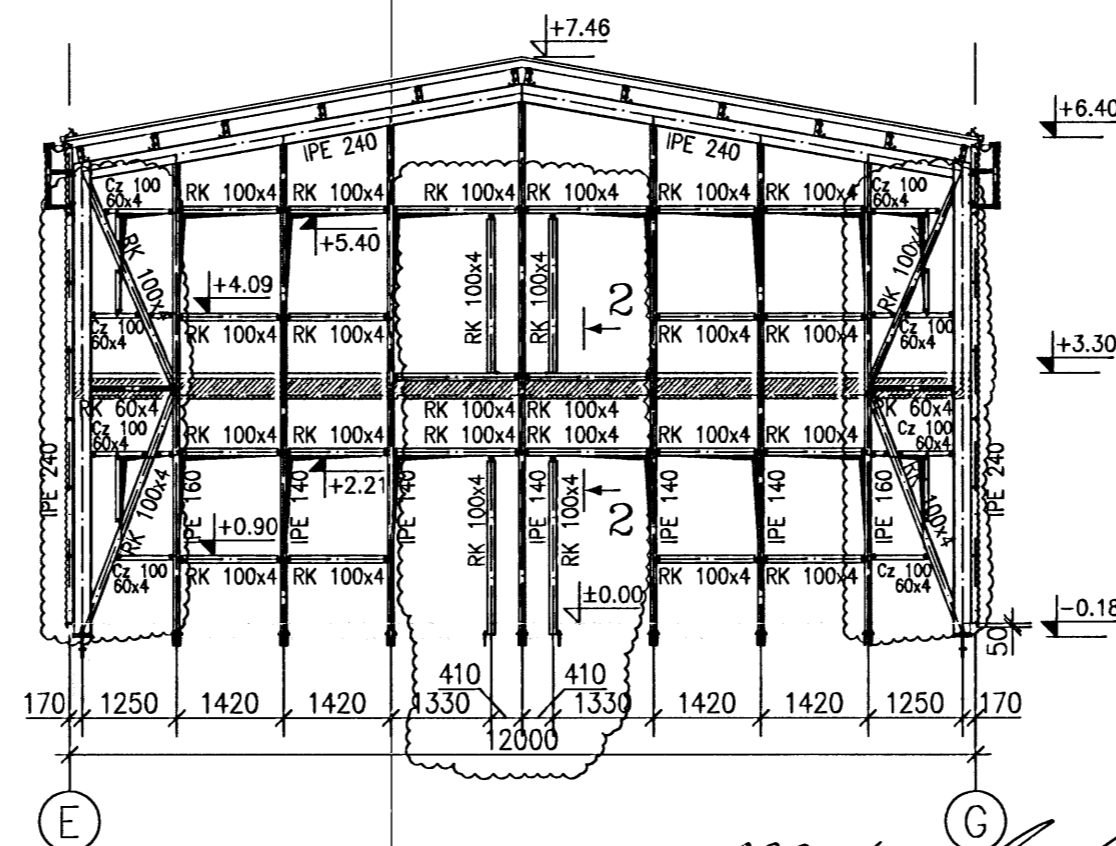
WALL IN AXIS E – OFFICE
SCALE 1:100



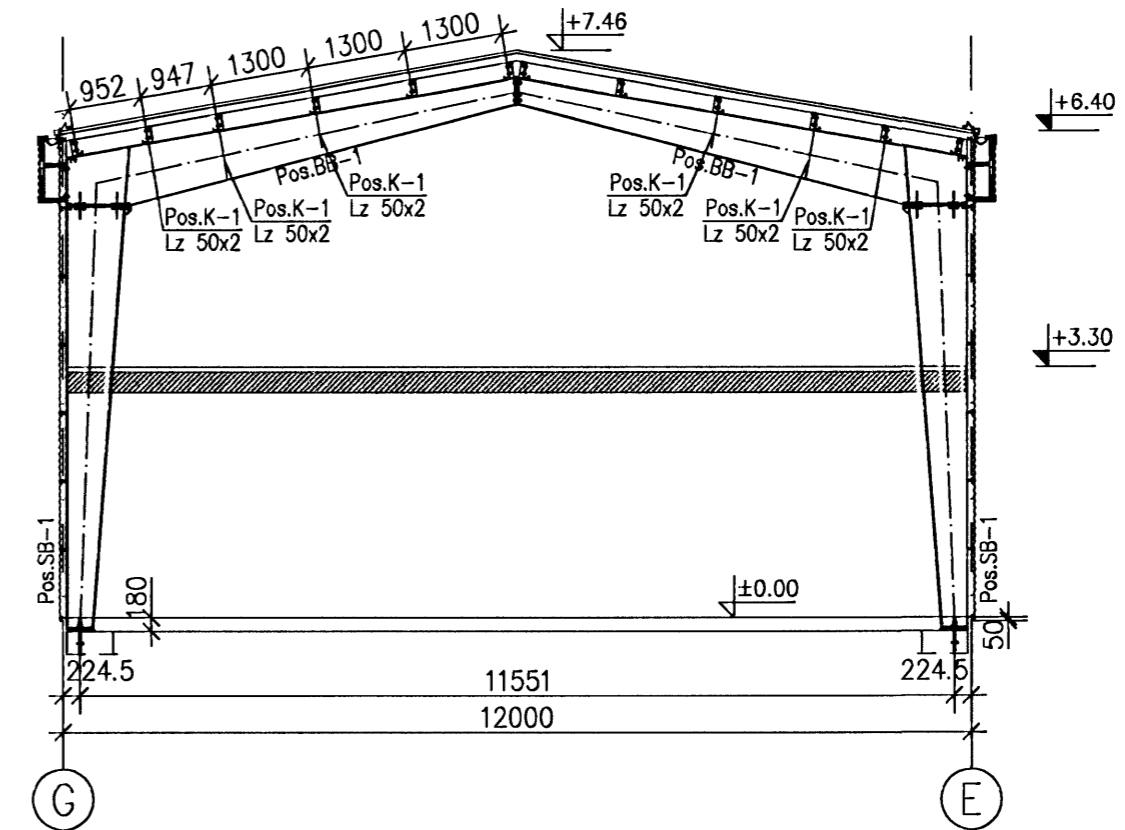
FRAME IN AXIS 5 – OFFICE
SCALE 1:100



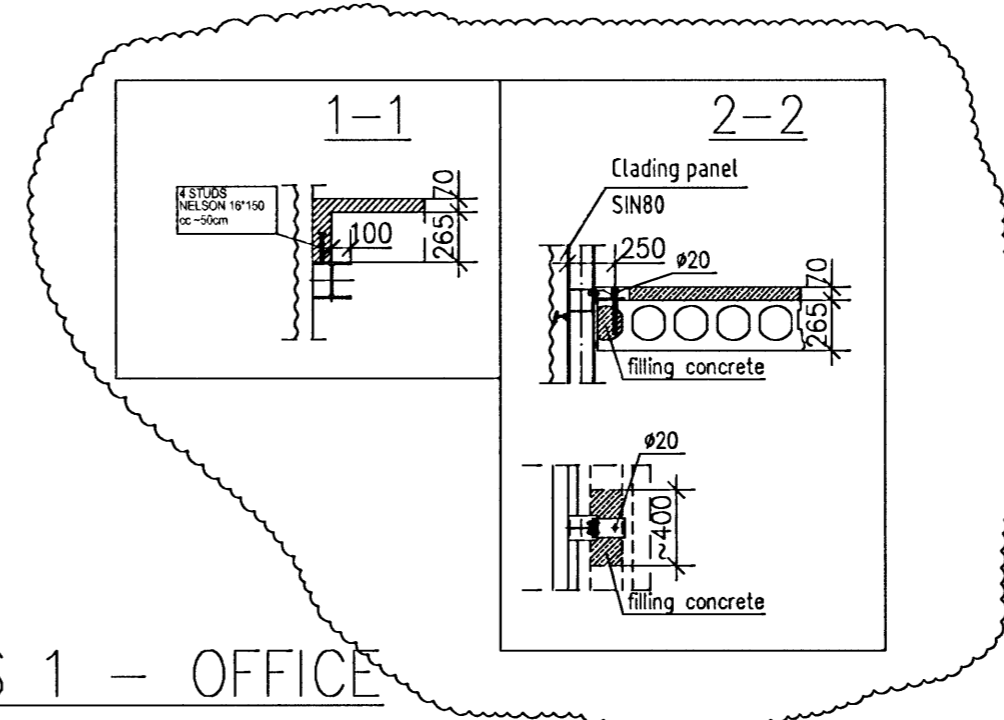
FRAME IN AXIS 1 – OFFICE
SCALE 1:100



FRAME IN AXIS 2,3,4 – OFFICE
SCALE 1:100



POS.	HIGHT/WEB THICKNESS/FLANGE WDE/FLANGE THICKNESS	STEEL
SB-1	350-800/8/250/10	S355
BB-1	350-800/8/250/10	S355



- Steel S355
Bolts cl. 8.8
- ALL BUTT JOINTS THAT ARE NOT DESCRIBED OUGHT TO BE EXECUTED IN THICKNESS OF THINNER FROM CONNECTED ELEMENTS
- ALL FILLET WELDS THAT ARE NOT DESCRIBED OUGHT TO BE EXECUTED IN THICKNESS:
- ONE-SIDED JOINTS - 0,7t₁
 - TWO-SIDED JOINTS - 0,5t₁
- WHERE: t₁ - THICKNESS OF THINNER FROM CONNECTED ELEMENTS
1. STRUCTURE CLASS "2" ACC. TO PN-B-06200:2002
 2. BOLTS
 - FOR SIMPLE CONNECTIONS OF CL 8.8 ACC. TO DIN 7990 - galvanized cell
 - FOR COMPRESSED CONNECTIONS OF CL 10.9 ACC. TO DIN 6914 - galvanized cell
 - THE MOMENT OF SCREW HOME AND METHOD OF LUBRICATION - ACC. TO BOLTS' MANUFACTURER (ie. PEINER HV M20 bolt of class 10.9, lubricated originally MoS, screw home moment 450 Nm)
 3. ELEMENTS TOLERANCE - MINUS
 4. BUTT JOINTS OUGHT TO BE CONTROLLED WITH FLAW DETECTOR

Línuhönnun
consulting engineers
Sudurlandsbraut 4A, IS-108 Reykjavík
tel: +354 555 1500, fax: +354 555 1391
Skjalmenningarstofnun 08085-5259

level ±0,00=h=31,95m

B	27.02.2008	CHANGES ARE MARKED BY THE CLOUDS
A	04.02.2008	CHANGES ARE MARKED BY THE CLOUDS
Revision	Date	Change
Documentation Stage: Construction design		Branch: Steel Construction
Object, Name and Address:		Date: 2008-01-29
-		Drawing name: FRAMES PLAN- OFFICE
-		Scale: 1:100
-		1:100
<p>RUUKKI Ruukki Construction Polska Sp. z o.o. ul. Towarowa 35 tel: +48 61 85 12 300 61-069 Poznań fax: +48 61 85 12 310 POLSKA www.ruukki.com.pl</p> <p>Finnmap Polska ul. Wyszynskiego 1/1 tel: +48 89 533 31 42 10-457 Olsztyn fax: +48 89 533 31 42 POLSKA www.fmcgroup.pl</p>		Project No.: 02.1000
Designed by: Piotr Walosik	Prepared by: Bartosz Regulski	Drawing No.: 005
Verified by: Krzysztof Bednarski		Rev: B