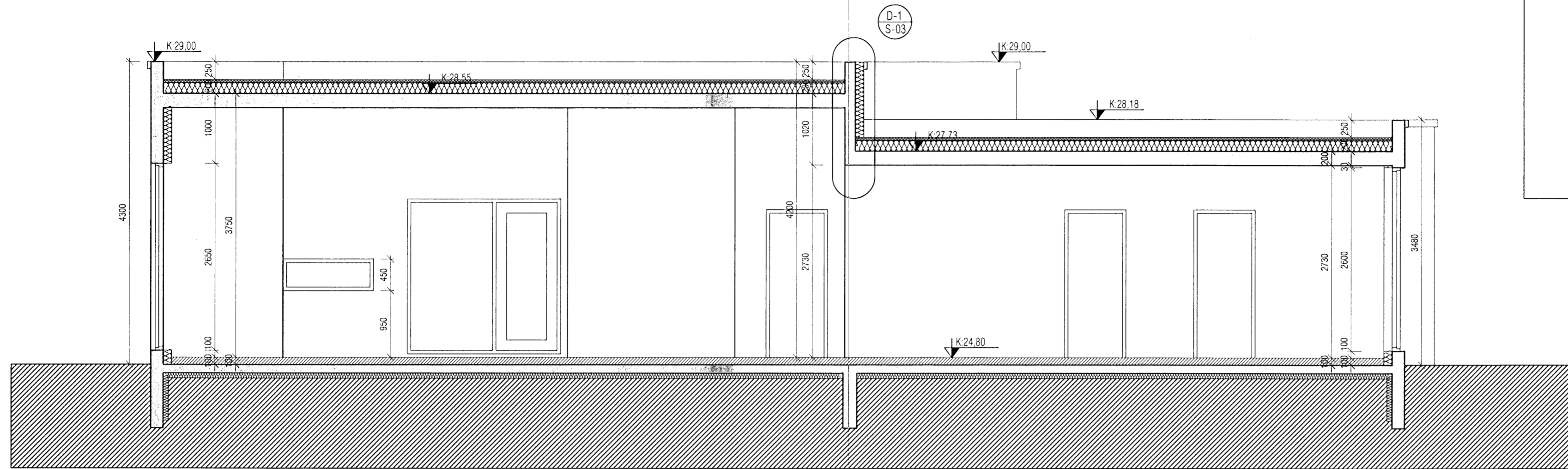
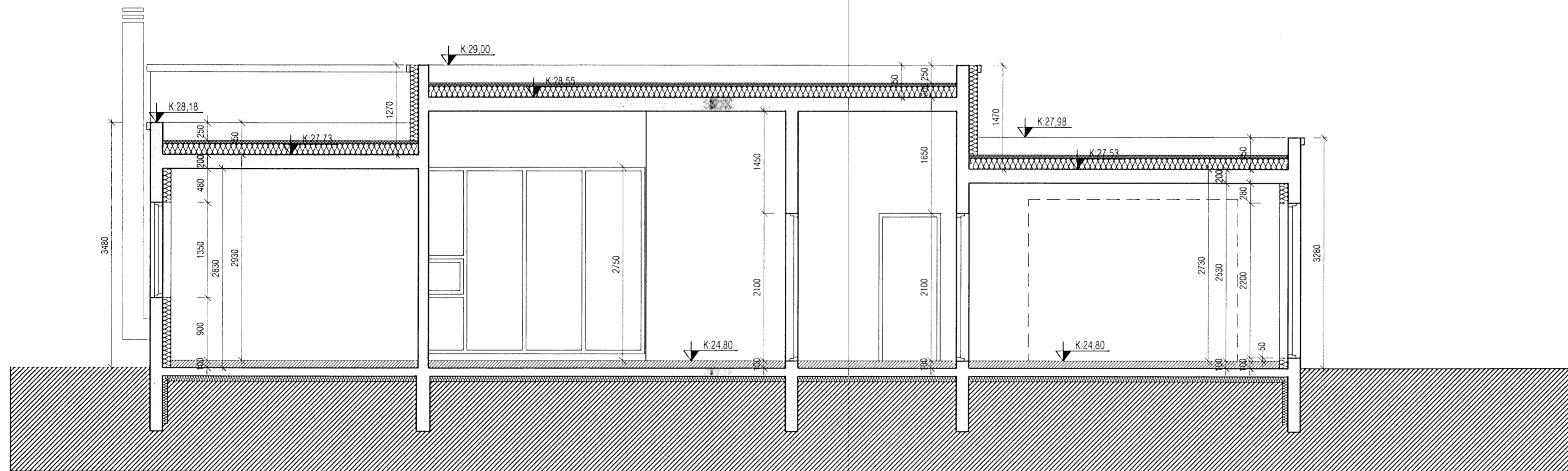


Byggingafræðingur Hafnarfjörðar
 Afgreitt þann
 12 FEB 2008
 VPS.

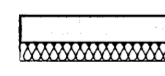
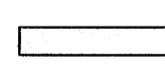
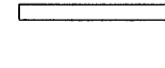
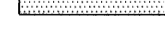


SNID A-A



SNID B-B

SKÝRINGAR:

-  Steyptur 180 mm veggur, einangraður með 100 mm steinull og hefðbundinni 20 mm múrhúðun
-  Steyptur 150 mm innveggur
-  Hefðbundinn innveggur t.d. 70 mm grind c/c 600 mm, klædd 2x13 mm gífsi eða 1x16 mm spónaplötum/einangrun.
-  Léttur veggur sem verður fyrir vatnsáraun. Klæddur rakavörðu gífsi.

VEKTOR - hönnun og ráðgjöf - Akralind 6, 201 Kópavogi.		Jón Hrafn Hlökkversson byggingafræðingur Kl. 260682-6519 sími: 554-6660 fax: 554-6669.		GLITVELLIR 32, HAFNARFJÖRDUR	
Teikn. nr.	Tilvisun á teikningu	Br.	Dags.	SÉRTEIKNINGAR SNID A-A, B-B	
Samþykkt				Hannað JHH	Teiknað JHH/FG
Dagsetning	Verk nr.	Mælikvarði	Teikn. nr.		
04.10.07	A-07-02-16	1:50	S-02		