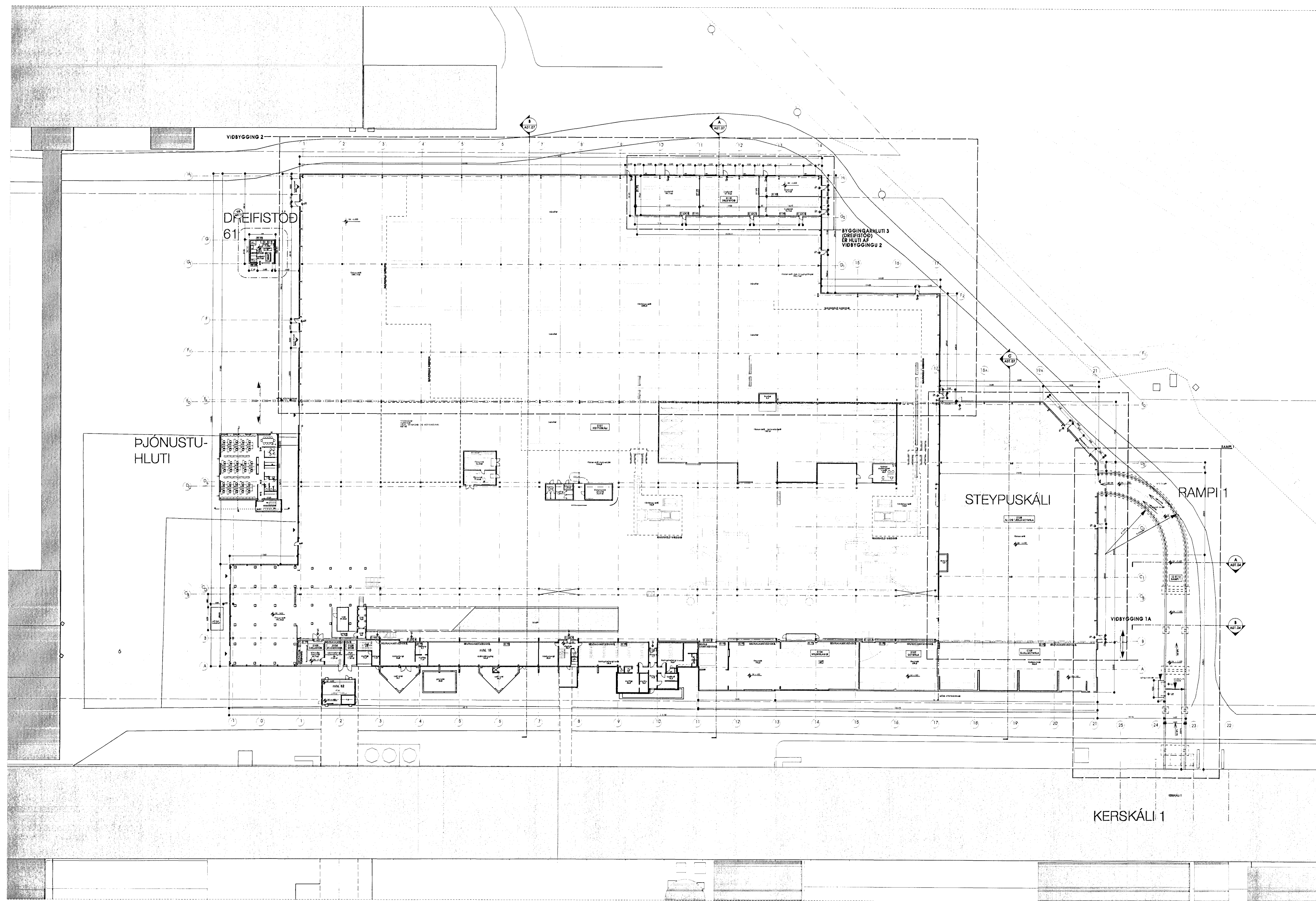


Samþykkt þann
03 MAY 2012
Byggingafultrúinn / Hafnarfrófi
Eh. Sigurður Steinar Jónsson



Fh 24 2012
REIÐINGDEIÐIRLIT 5
EVA ARIJANAR-
OG KJÓLA OUSA EÐIS
Gangvegur 7 210 Garðabæ
Rall Steinarsson

28 03 2012
AS

1 YFIRLITSMYND STEYPUKÁLI - RAMPI 1
mkv. 1:500

Skýringar:
Legend:

Handwritten signatures and stamps:
Eg Halldórsson
Binnir E. Jónsson
Eg Halldórsson

Utg nr / Rev no	As built	Lýsing / Description	Dagsetning / Date	Hanf/Ún / Des/Drw	Yfif / Ckd	Notk heim / Suppl Rev	Notk heim / ISAL Ref
A	As built		23.03.2012	SK	SK		

This drawing is the property of Rio Tinto Alcan Iceland Ltd. and handed out for personal use only. It may neither be copied nor made available to others without permission of Rio Tinto Alcan Iceland Ltd. The receiver is liable for any misuse.
Stærð: A1 Mkv.: 1:500
Formát: Scale:
Dimensions without tolerances according to ISO 2768-1 medium.



Dagsetning / Date 24.08.2011	Teikn / Drawn UDMSK	Teikn nr. / Dwg. no.
Hannað / Designed SK	Teikn nr. / Dwg. no.	
Verktaki / Supplier GLÁMA-KÍM	Teikn nr. / Dwg. no.	
Teikn nr. / Dwg. no.	Teikn nr. / Dwg. no.	
Samþykkt / Approved	Yfif / Chkd SK	
Hluti af / Part of:		

RAMPI 1 - MILLI STEYPUKÁLA OG KERSKÁLA 1
YFIRLITSMYND
ADALUPPRÁTTUR
Architectural Building Application
Rio Tinto Alcan
Alcan Iceland Ltd
Straumskriki
S-222 Hafnarfjörður
Iceland

Flokkur nr. / Class no.	Bláð nr. / Sheet no.	Næsta bl. nr. / Next sheet no.
Kostn. nr. / Cost no.	Bún. nr. / Eq. no.	
5010	16957	
AKS	UF002	
Teikn nr. / Dwg. no. of ISAL	Breyt./Rev	
253312	A	