

CRANE DETAIL FOR AREA#02

CRANE DETAIL FOR AREA#02

THE FOLLOWING ARE THE CRANE DATA USED FOR DESIGN AND DETAILING OF BUILDING COMPONENT

- CRANE CAPACITY : 16.0MT
- CRANE TYPE : TOP RUNNING CRANE
- CRANE MAKE : AUSIO
- CRANE RUN LENGTH : 50000mm
- Q TO Q OF RAILS : 21975 mm
- TOP OF CRANE BEAM : 8625 mm
- TYPE OF CRANE BRIDGE : DOUBLE GIRDER
- TYPE OF CONSTRUCTION : FLUSH
- CRANE HOOK HT.FROM FFL : 8710mm
- WHEEL BASE : 3800mm
- OPERATION TYPE : PENDANT
- MAX.VERTICAL WHEEL LOAD (WITH IMPACT) : 155.0 kN
- MAX.HORIZONTAL WHEEL LOAD (WITH IMPACT) : 10.0 kN
- FATIGUE STRESS(KN/SQ.CM) : 18.0

CRANE BEAM SECTION (80.93 KG/M)

- CAP CHANNEL = PFC 260x75x28(Fy = 35.5 KN/SQ.CM)
- WEB DEPTH & THK. = 500x8 mm.
- TOP&BOTTOM FLANGE= 175x8mm.
- BEARING STIFF. = 10 mm. THK.

CRANE BRACKET SECTION

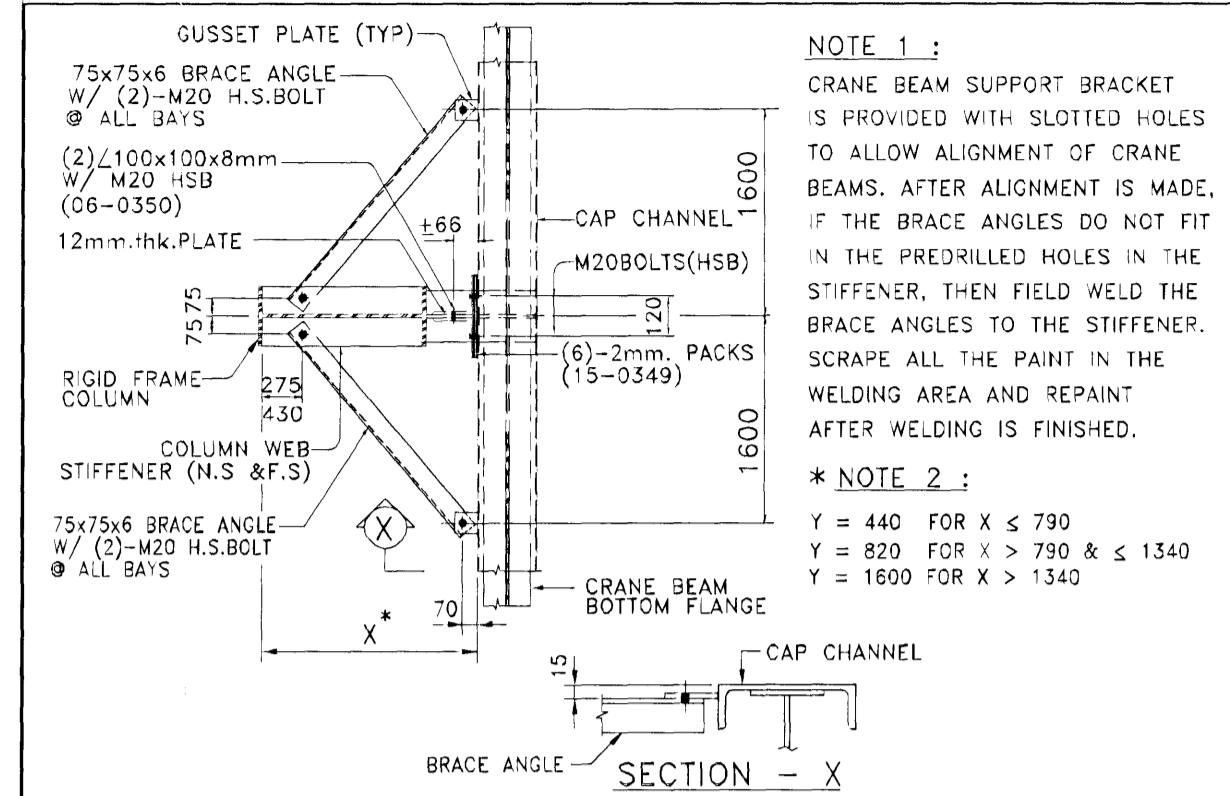
- WEB DEPTH = 500 X 8 mm. THK.
- FLANGE SIZE = 200X 8 mm. THK.
- STIFFENER = 10 MM THK. STIFF

IMPACT FACTOR CONSIDERED FOR DESIGN:

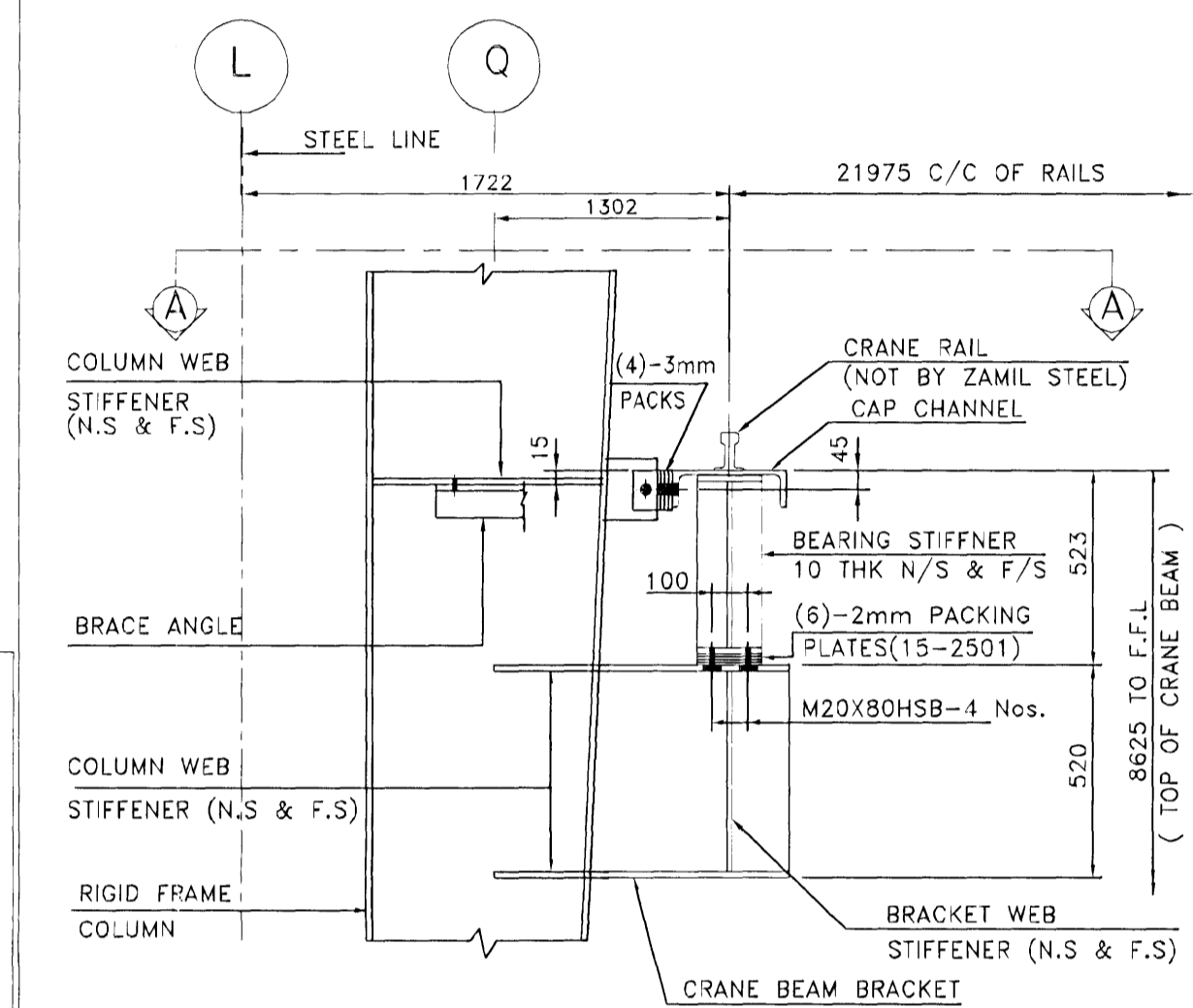
- VERTICAL = 10%
- HORIZONTAL = 20%
- LONGITUDINAL = 10%

CUSTOMER TO CONFIRM THE FOLLOWING

- WHEEL BASE : 3.8 M
- BUMPER DISTANCE : 4.34 M
- MAX. WHEEL LOAD : 140.7KN (STATIC)
- CRANE BRIDGE WT. : 16.05T
- TROLLEY WT. : 2.56T
- TYPE OF CRANE BRIDGE : DOUBLE GIRDER
- TYPE OF CONSTRUCTION : NORMAL



SECTION "A-A" (FROM DETAIL CRE-001 OR CRE-025 OR CRE-026) CRANE BEAM BRACE CONNECTION @ R.F. COLUMN (CRE-002)



SECTION "L-Q" (FROM DETAIL CRE-001 OR CRE-025 OR CRE-026) CRANE BEAM BRACKET CONNECTION @ R.F. COLUMN (CRE-002)

CRANE DETAIL FOR AREA#03

THE FOLLOWING ARE THE CRANE DATA USED FOR DESIGN AND DETAILING OF BUILDING COMPONENT

- CRANE CAPACITY : 6.3MT
- CRANE TYPE : TOP RUNNING CRANE
- CRANE MAKE : MORISS
- CRANE RUN LENGTH : 34700mm
- Q TO Q OF RAILS : 22450mm
- TOP OF CRANE BEAM : 6160 mm
- TYPE OF CRANE BRIDGE : DOUBLE GIRDER
- TYPE OF CONSTRUCTION : FLUSH
- CRANE HOOK HT.FROM FFL : 6074 mm
- WHEEL BASE : 4000mm
- OPERATION TYPE : PENDANT
- MAX.VERTICAL WHEEL LOAD (WITH IMPACT) : 69.0 kN
- MAX.HORIZONTAL WHEEL LOAD (WITH IMPACT) : 4.0 kN
- FATIGUE STRESS(KN/SQ.CM) : 18.0

CRANE BEAM SECTION (52.12 KG/M)

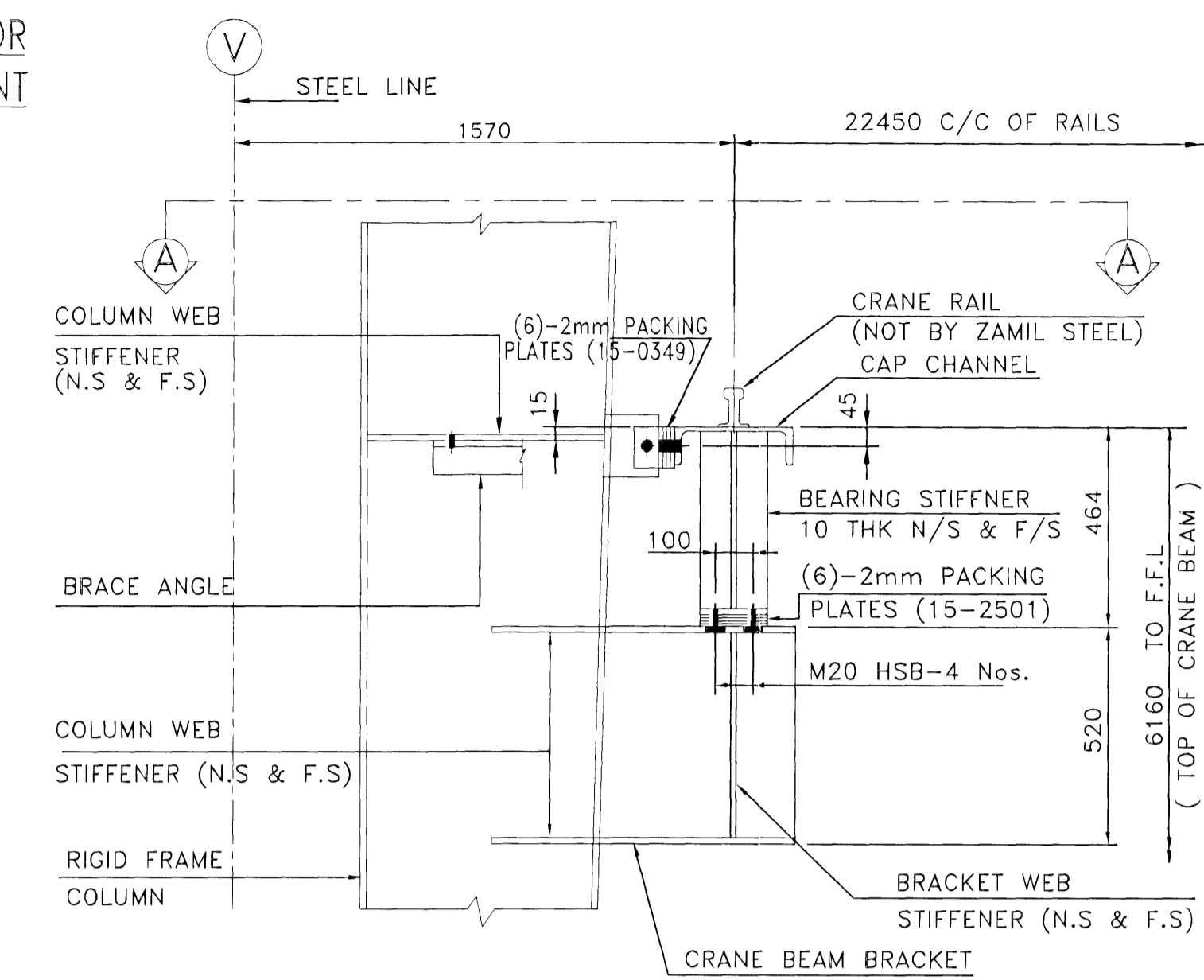
- CAP CHANNEL = PFC 200x175x23(Fy = 35.5 KN/SQ.CM)
- WEB DEPTH & THK. = 450x5mm.
- BOTTOM FLANGE = 175x8 mm.
- BEARING STIFF. = 10 mm. THK.

CRANE BRACKET SECTION

- WEB DEPTH = 500 X 8 mm. THK.
- FLANGE SIZE = 200 X 10 mm. THK.
- STIFFENER = 10 MM THK. STIFF

CUSTOMER TO CONFIRM THE FOLLOWING (FOR GL 4-14)

- WHEEL BASE : 4.0 M
- MAX. WHEEL LOAD : 62.4KN(STATIC)
- CRANE BRIDGE WT. : 10.195 T
- TROLLEY WT. : 0.735 T
- TYPE OF CRANE BRIDGE : DOUBLE GIRDER
- TYPE OF CONSTRUCTION : FLUSH



CRANE BEAM ELEVATION (CRE-003)

- IMPACT FACTOR CONSIDERED FOR DESIGN:
- VERTICAL = 10%
 - HORIZONTAL = 20%
 - LONGITUDINAL = 10%

CRANE DETAIL FOR AREA#01

CRANE DETAIL FOR AREA#01

THE FOLLOWING ARE THE CRANE DATA USED FOR DESIGN AND DETAILING OF BUILDING COMPONENT

- CRANE CAPACITY : 12.5MT
- CRANE TYPE : TOP RUNNING CRANE
- CRANE MAKE : MORISS
- CRANE RUN LENGTH : 40000mm
- Q TO Q OF RAILS : 22250mm
- TOP OF CRANE BEAM : 6970mm
- TYPE OF CRANE BRIDGE : DOUBLE GIRDER
- TYPE OF CONSTRUCTION : FLUSH
- CRANE HOOK HT.FROM FFL : 6873mm
- WHEEL BASE : 3500mm
- OPERATION TYPE : PENDANT
- MAX.VERTICAL WHEEL LOAD (WITH IMPACT) : 114.0 kN
- MAX.HORIZONTAL WHEEL LOAD (WITH IMPACT) : 7.0 kN
- FATIGUE STRESS(KN/SQ.CM) : 18.0

CRANE BEAM SECTION (69.94 kg/m)

- CAP CHANNEL = PFC 260x75x28(Fy = 35.5 KN/SQ.CM)
- WEB DEPTH & THK. = 500x8 mm.
- BOTTOM FLANGE = 175x8 mm.
- BEARING STIFF. = 10 mm. THK.

CRANE BRACKET SECTION

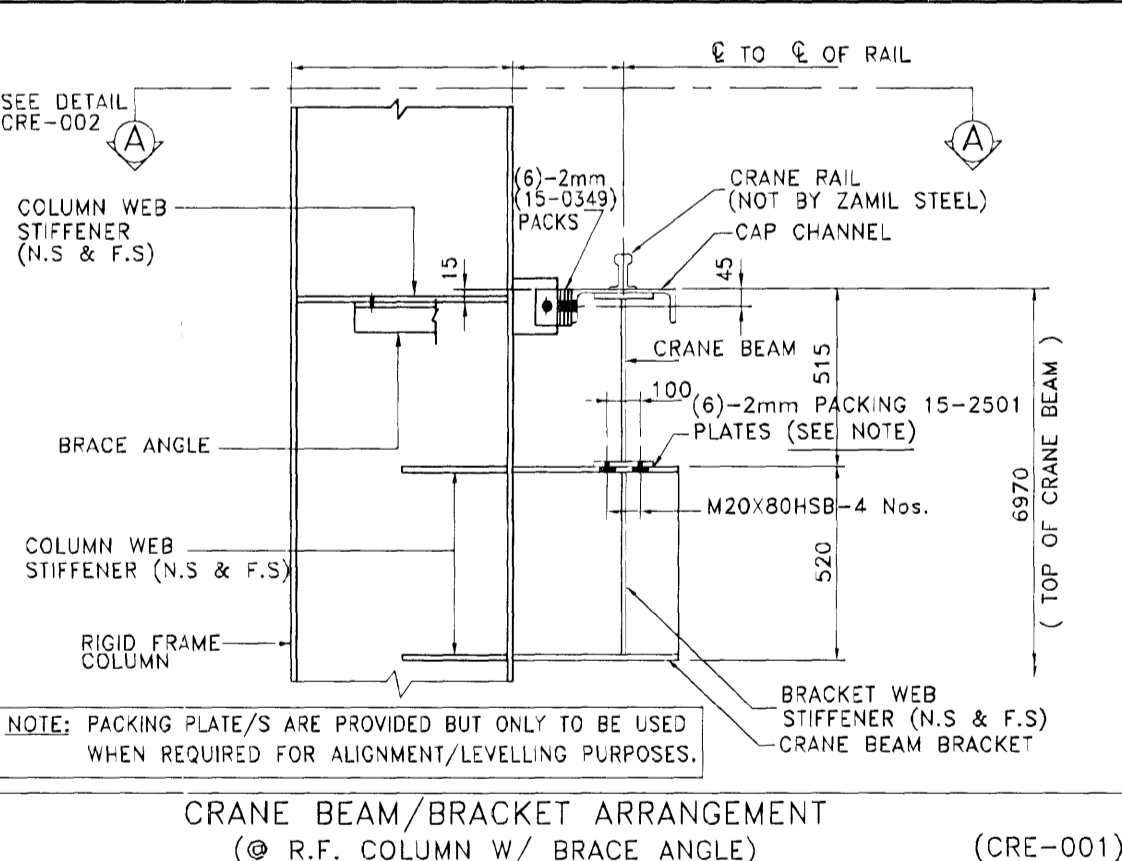
- WEB DEPTH = 500 X 8 mm. THK.
- FLANGE SIZE = 200 X 10 mm. THK.
- STIFFENER = 10 MM THK. STIFF

IMPACT FACTOR CONSIDERED FOR DESIGN:

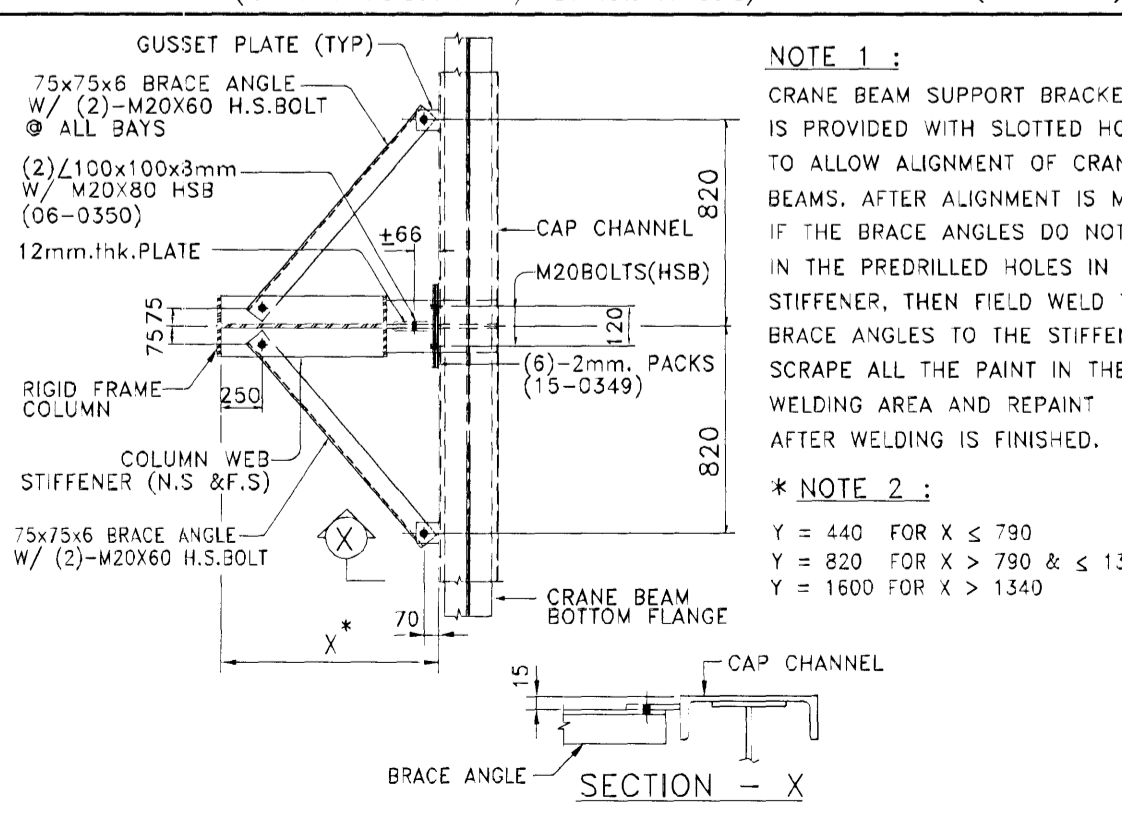
- VERTICAL = 10%
- HORIZONTAL = 20%
- LONGITUDINAL = 10%

CUSTOMER TO CONFIRM THE FOLLOWING (FOR GL D-1)

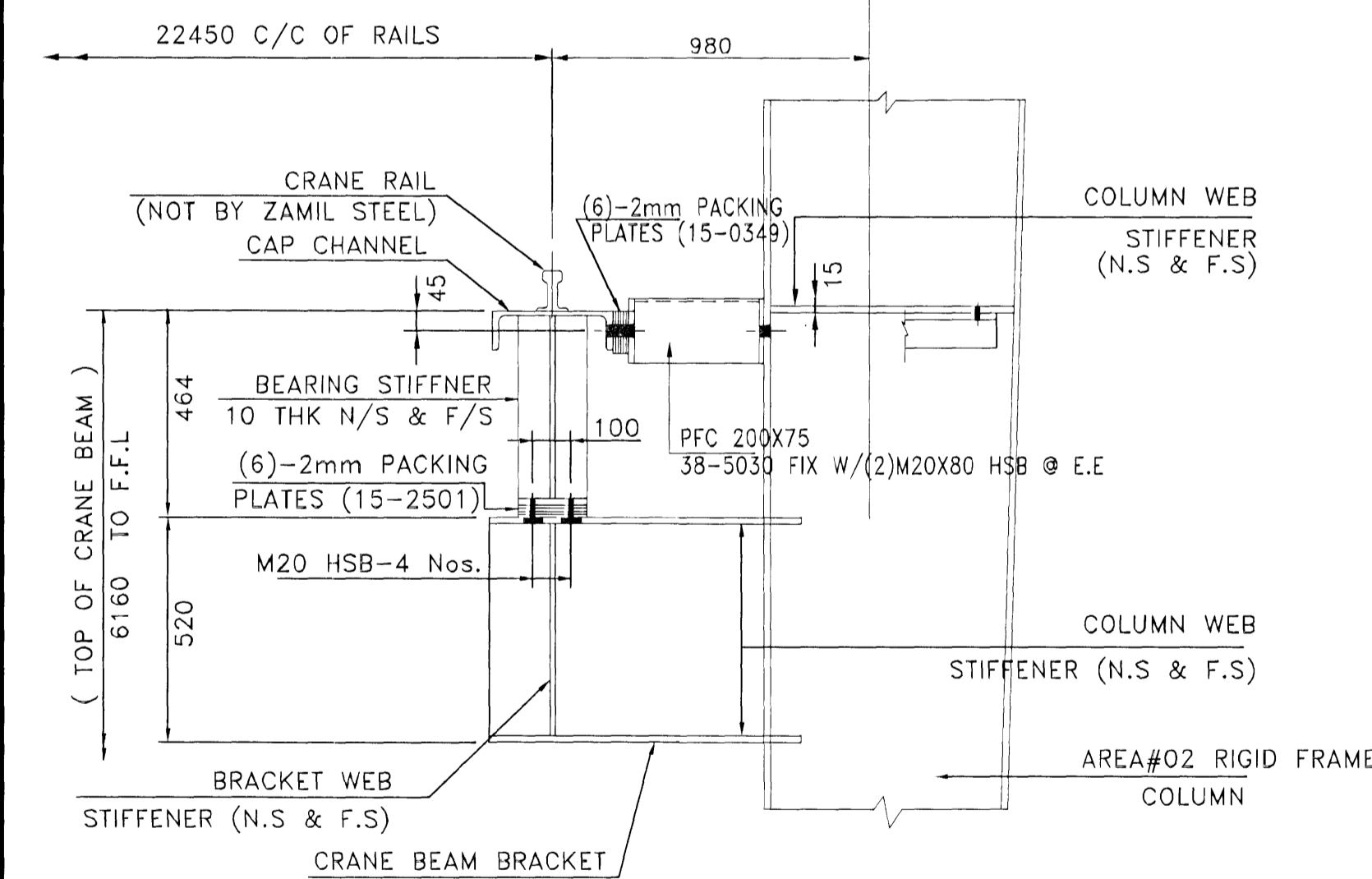
- MORISS CRANE IS CONSIDERED AS PER MAIL
- HOOK HEIGHT AVAILABLE : 6873MM
- WHEEL BASE : 3.5 M
- BUMPER : 4.16 M
- CLEAR HT ABOVE T.O. RAIL : 1385 MM
- MAX. WHEEL LOAD : 104.2kN (STATIC)
- CRANE BRIDGE WT. : 11.955T
- TROLLEY WT. : 1.235 T
- TYPE OF CRANE BRIDGE : DOUBLE GIRDER
- TYPE OF CONSTRUCTION : NORMAL



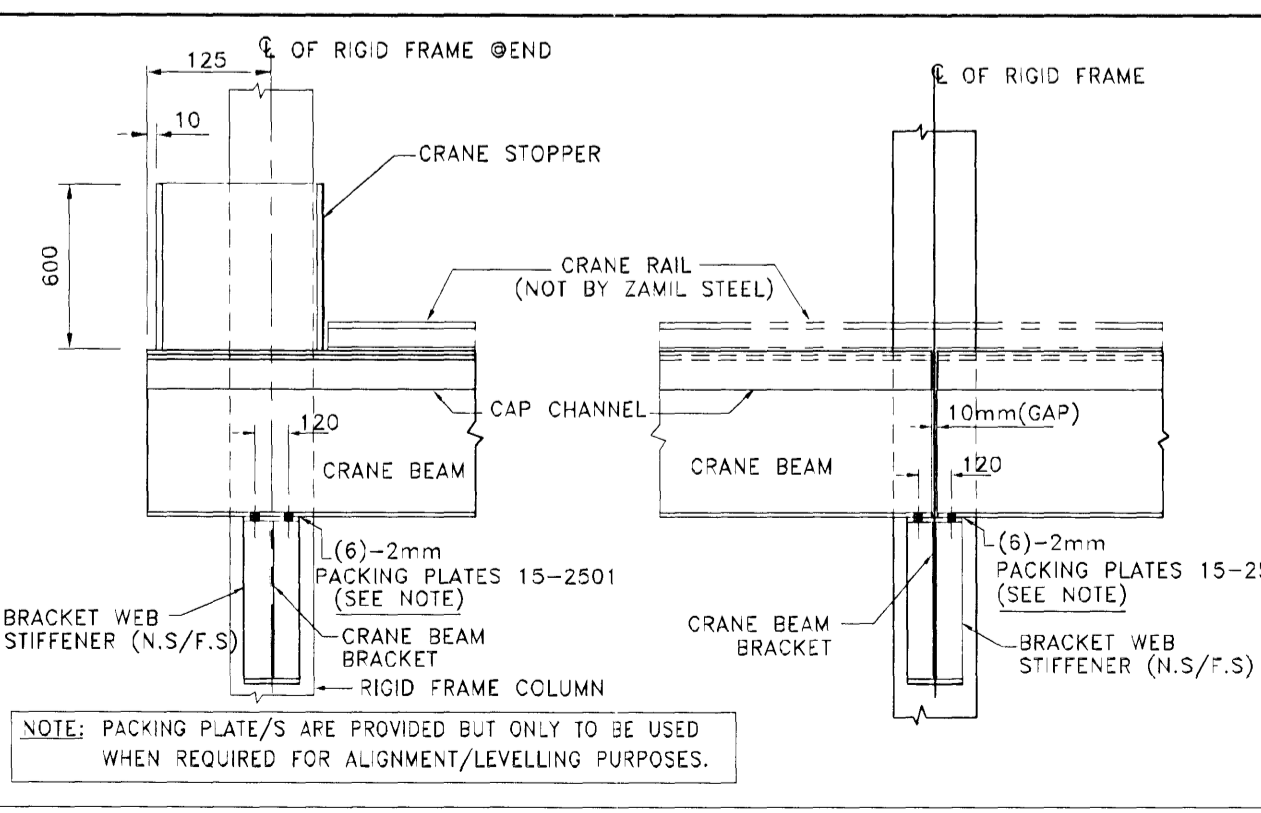
CRANE BEAM/BACKET ARRANGEMENT (CRE-001)



SECTION "A-A" (FROM DETAIL CRE-001 OR CRE-025 OR CRE-026) CRANE BEAM BRACE CONNECTION @ R.F. COLUMN (CRE-002)



CRANE BEAM ELEVATION (CRE-003)



CRANE BEAM ELEVATION (CRE-003)

NO.	DATE	DESCRIPTION	DRN	CHK	DSN
2	20.03.2008	ISSUED FOR CONSTRUCTION	NSK	TPS	IPC
1	24.11.2007	RE-ISSUED FOR APPROVAL	MGK	VRA	IPC
0	26.10.2007	ISSUED FOR APPROVAL	KRT	VRA	IPC

ZS JOB NO. : V7-D567 BUILDING NO.: 01
PROJECT NAME : HEDINN HOUSE
CUSTOMER : HEDINN
JOBSITE LOCATION : HAFNAFIRDI, ICELAND
DRAWING TITLE : CRANE DETAILS
DRAWING NO. : E37