

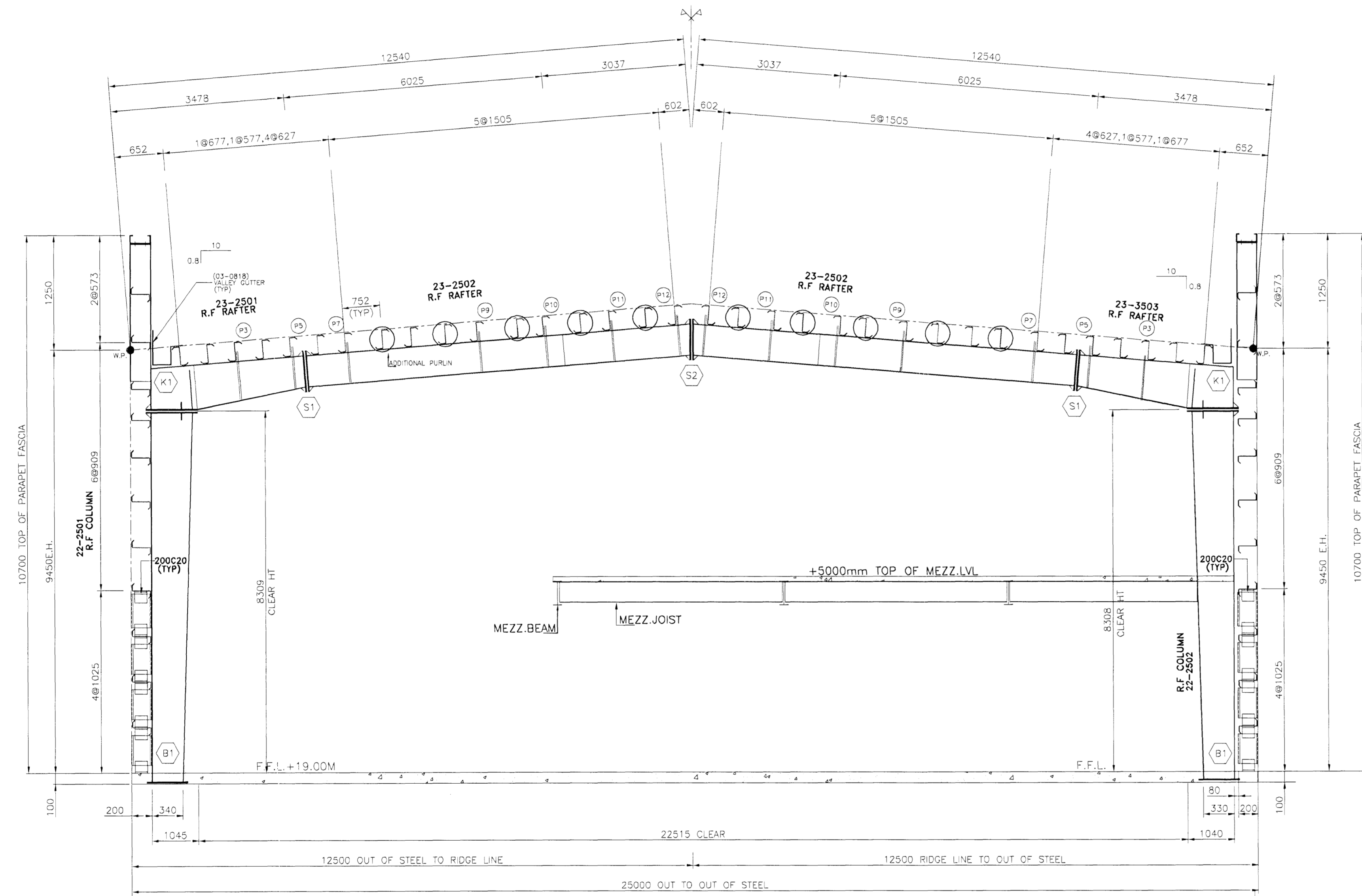
CROSS SECTION SCHEDULE (LEFT FROM RIDGE)					
BOLT SCHEDULE			FLANGE BRACE		
CONN.	QTY	SIZE	LENGTH	MARK	PART MARK
(B1)	4	M30	900	(P3)	07-2501
(K1)	12	M30	100	(P5)	07-2502
(S1)	10	M27	110	(P7)	07-2503
(S2)	8	M27	90	(P9)	07-2504
				(P10)	07-2505
				(P11)	07-2506
				(P12)	07-2506

CROSS SECTION SCHEDULE (RIGHT FROM RIDGE)					
BOLT SCHEDULE			FLANGE BRACE		
CONN.	QTY	SIZE	LENGTH	MARK	PART MARK
(B1)	4	M30	900	(P3)	07-2501
(K1)	12	M30	100	(P5)	07-2502
(S1)	10	M27	110	(P7)	07-2503
				(P9)	07-2504
				(P10)	07-2505
				(P11)	07-2506
				(P12)	07-2506

IMPORTANT NOTES

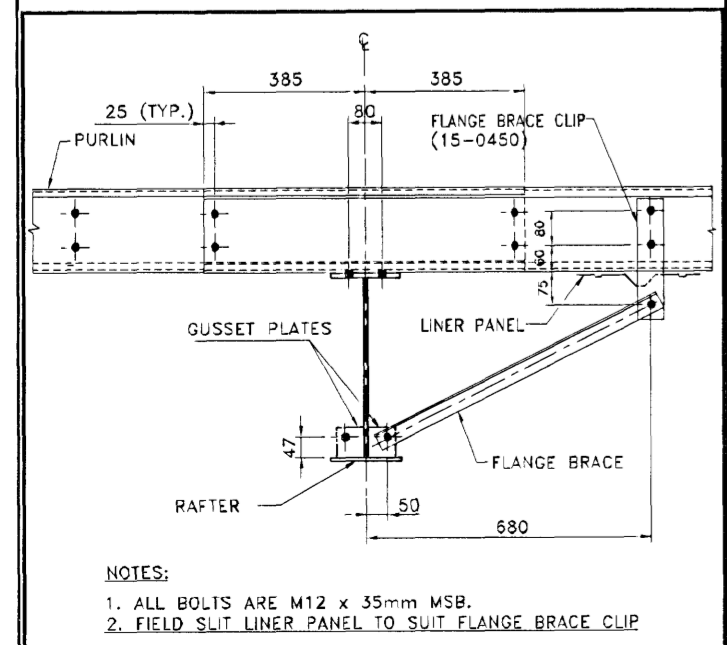
- High strength bolts (HSB) are galvanized while mild steel bolts (MSB) are electro plated (yellow chromate conversion). These bolts are marked on the heads so that they can be easily identified.
- The correct type of bolts must be used as called for on the details. Using wrong type of bolts may cause building failure at the erector's responsibility.
- Continuous machine submerged arc weldings (S.A.W.) meet the applicable requirements of the American Welding Society (A.W.S.) D1.1-2004.
- Web-to-flange welds are single side fillet welds in accordance with the ninth edition of the AWS Table J2.4 Page 5-67 unless noted otherwise.
- Web-butt welds are complete penetration using flux back-up (16mm plate max.)
- Flange butt welds are on both sides with copper back-up. Flanges 19mm or thicker are beveled prior to assembly.
- Gusset plates for flange braces are welded on both sides of the column and rafter, however flange braces are required at one side (unless noted otherwise). For aesthetic reasons, it is preferable to install them all at the same side of column and rafter. The side chosen depending on erection sequence.

Sampykkt þann
24 JUNI 2008
 Byggingarfulltrúinn í Hafnafirði
 F.h. Hrólfur S. Gunnlaugsson

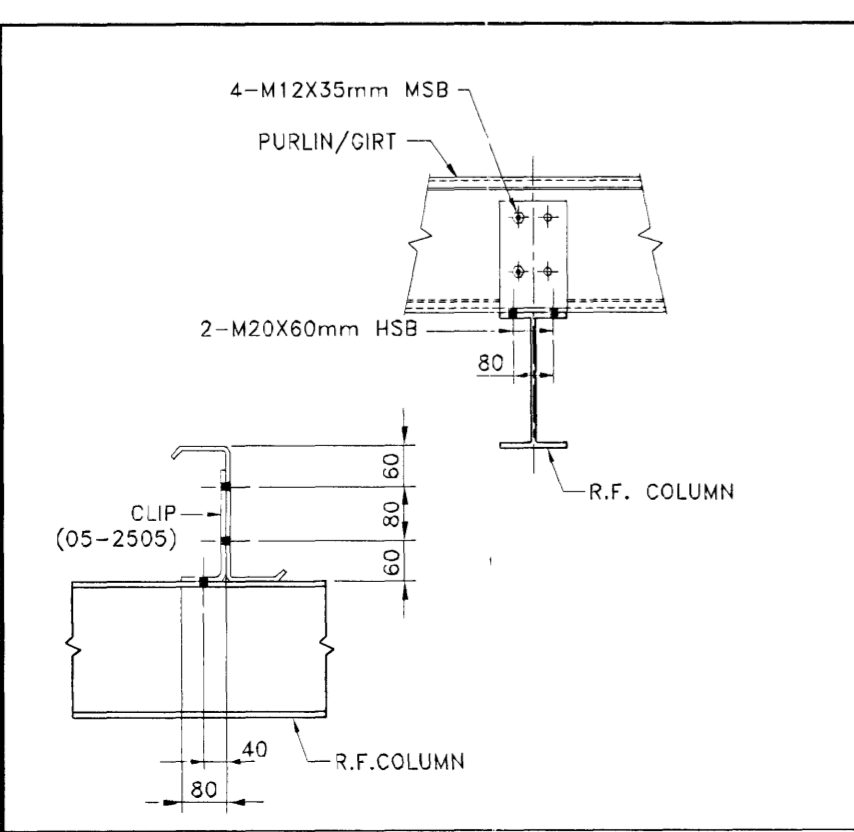


CROSS SECTION
 (© GRID LINE - A)

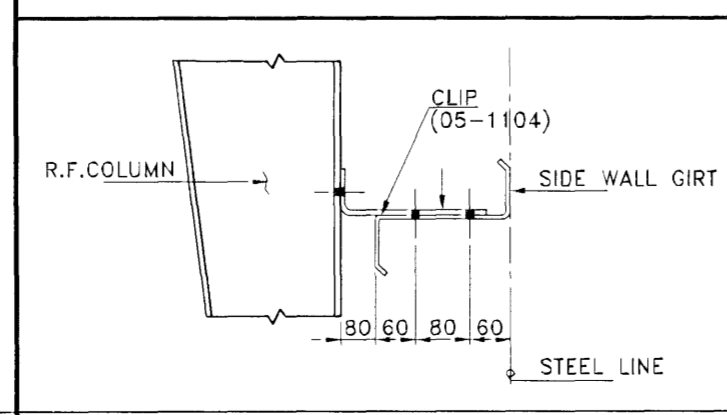
█ BLOCK WORK
 █ BY OTHERS



FLANGE STAY WITH CONTINUOUS LAP (FCE-041)



COLUMN & GIRTS CONNECTION (FOR FLANGE THICKNESS MORE THAN 15 MM ONLY)



COLUMN & GIRTS CONNECTION © GL-4/A

ASK
 26. maí 2008
 -64
 Alti Þórunn Hrólfsson

VST Verkfræðistofa
 Sigurðar Thoroddsen hf.
 F.A. VST hf., Hrólfur Hrólfsson 150946-4929

NO.	DATE	DESCRIPTION	DRN	CHK	DSN
0	20.03.2008	ISSUED FOR CONSTRUCTION	NSK	TPS	IPC

الزامل للحدید
ZAMIL STEEL ENGINEERING DEPARTMENT

ZS JOB NO. : V7-D567 BUILDING NO.: 01
 PROJECT NAME : HEDINN HOUSE
 CUSTOMER : HEDINN
 JOBSITE LOCATION : HAFNAFIRDI, ICELAND
 DRAWING TITLE :