

CROSS SECTION SCHEDULE (LEFT FROM RIDGE)

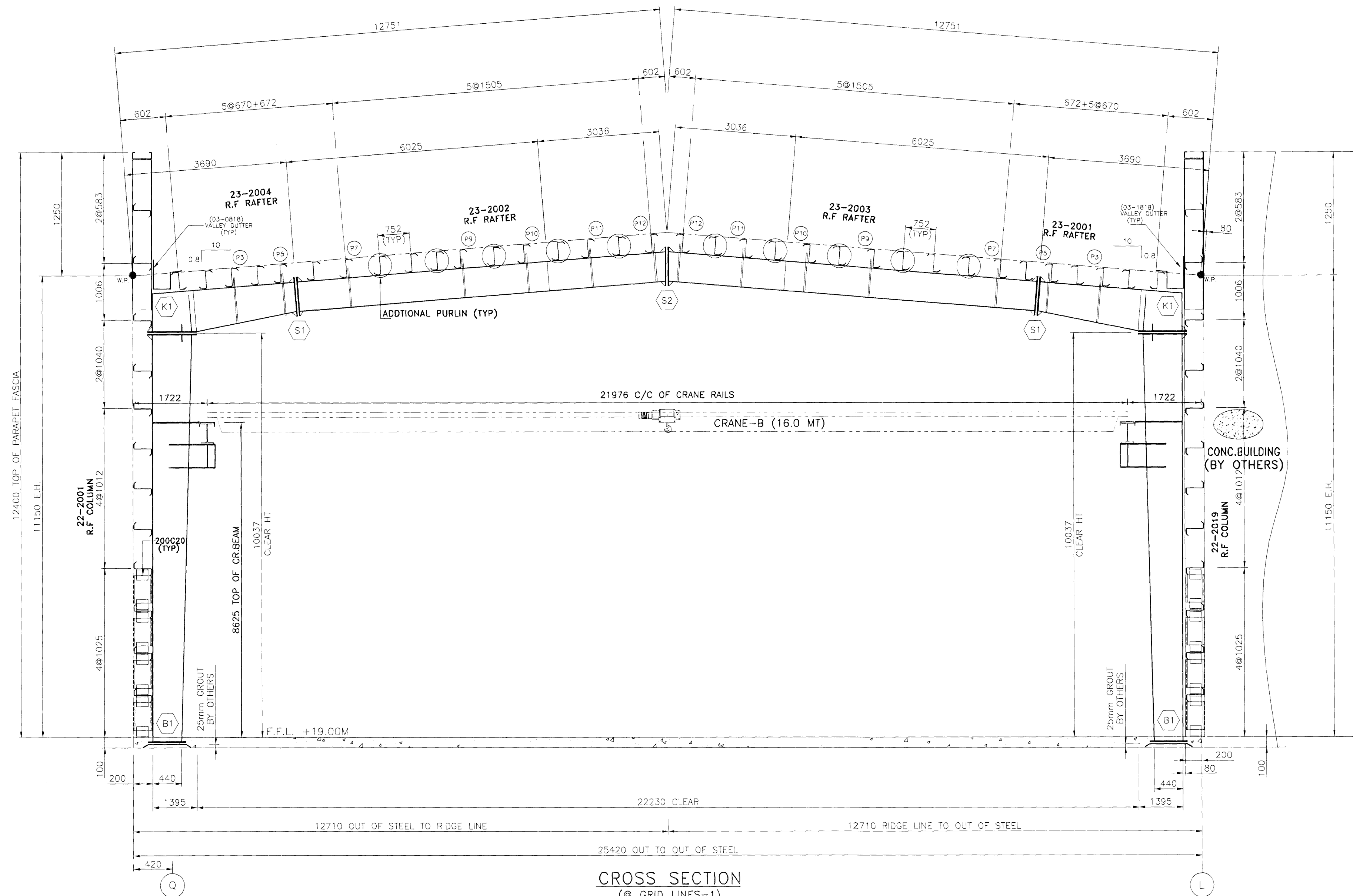
BOLT SCHEDULE				FLANGE BRACE	
CONN	QTY	SIZE	LENGTH	MARK	PART MARK
(B1)	4	M36	1000	(P3)	07-2001
(K1)	10	M36	120	(P5)	07-2002
(S1)	10	M30	100	(P7)	07-2003
(S2)	10	M30	100	(P9)	07-2003
				(P10)	07-2003
				(P11)	07-2003
				(P12)	07-2003

CROSS SECTION SCHEDULE (RIGHT FROM RIDGE)

BOLT SCHEDULE				FLANGE BRACE	
CONN	QTY	SIZE	LENGTH	MARK	PART MARK
(B1)	4	M36	1000	(P3)	07-2001
(K1)	10	M36	120	(P5)	07-2002
(S1)	10	M30	100	(P7)	07-2003
				(P9)	07-2003
				(P10)	07-2003
				(P11)	07-2003
				(P12)	07-2003

IMPORTANT NOTES

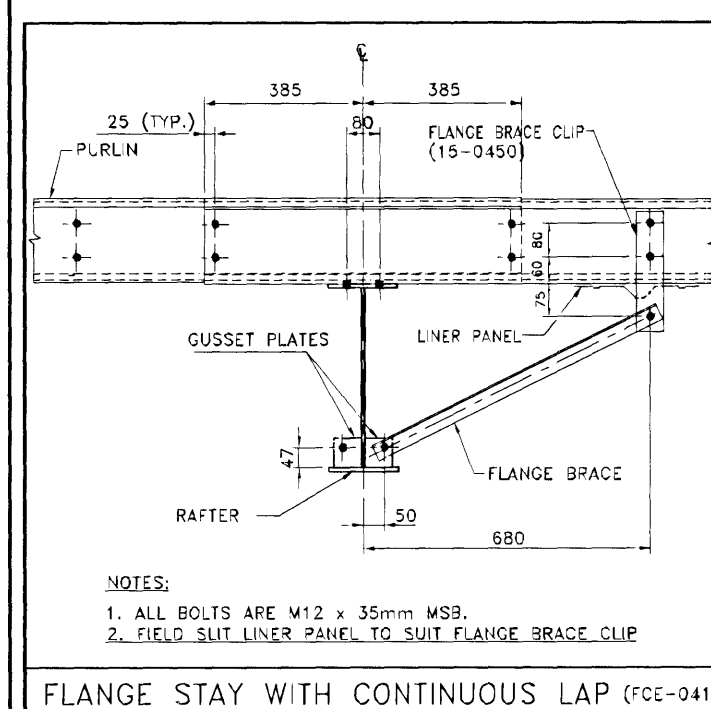
- High strength bolts (HSB) are galvanized while mild steel bolts (MSB) are electro plated (yellow chromate conversion). These bolts are marked on the heads so that they can be easily identified.
- The correct type of bolts must be used as called for on the details. Using wrong type of bolts may cause building failure at the erector's responsibility.
- Continuous machine submerged arc weldings (S.A.W.) meet the applicable requirements of the American Welding Society (A.W.S.) D1.1-2004.
- Web-to-flange welds are single side fillet welds in accordance with the ninth edition of the AISC Table J2.4 Page 5-67 unless noted otherwise.
- Web-butt welds are complete penetration using flux back-up (16mm plate max.)
- Flange butt welds are on both sides with copper back-up. Flanges 19mm or thicker are beveled prior to assembly.
- Gusset plates for flange braces are welded on both sides of the column and rafter, however flange braces are required at one side (unless noted otherwise). For aesthetic reasons, it is preferable to install them all at the same side of column and rafter. The side chosen depending on erection sequence.



CROSS SECTION

(@ GRID LINES-1)

- BLOCK WORK
- BY OTHERS



FLANGE STAY WITH CONTINUOUS LAP (FC-041)

Samþykkt þann
 24 JUNI 2008
 Byggingarfulltrúinn í Hafnarfirði
 F.h. Hrólfur S. Gunnlaugsson

VST Verkfræðistofa
 Sigurðar Thoroddsen hf.
 F.h. VST Hólmur Harsson 150746-4929

26. maí 2008
 Hólmur Harsson

C	20.05.2008	ISSUED FOR CONSTRUCTION	NSK	TPS	IPC
NO.	DATE	DESCRIPTION	DRN	CHK	DSN



ZS JOB NO.	: V7-D567	BUILDING NO.:	01
PROJECT NAME	: HEDINN HOUSE		
CUSTOMER	: HEDINN		
JOB SITE LOCATION	: HAFNAFIRÐI, ICELAND		
DRAWING TITLE	: CROSS SECTION @ GL-1		DRAWING NO.
			E52