

SKRIFSTOFUHLUTI 1. HÆÐ

NR		AFKÖST W	MILLIBIL cm	ÞVERMÁL mm	LENGD m	RENNSLI l/s	MÓTOR LOKI	HITA NEMI
KERFI 409								
1.1	01.05	1.716	15,0	17	126	0,04		
1.2	01.24	1.273	22,5	17	95	0,03	ML 12	HN 12
1.3	01.21	1.138	22,5	17	86	0,03	ML 13	HN 13
1.4	01.21	1.138	22,5	17	79	0,03	ML 14	HN 13
1.5	01.18	766	22,5	17	79	0,02	ML 15	HN 14
1.6	01.18	766	22,5	17	81	0,02	ML 16	HN 14
1.7	01.04	1.699	22,5	17	93	0,04		
KEFI 410								
1.1	01.04	1.790	22,5	17	98	0,04		
1.2	01.13	1.905	22,5	17	113	0,05	ML 12	HN 12
1.3	01.12	1.271	22,5	17	99	0,03	ML 13	HN 13
1.4	01.12	1.271	22,5	17	101	0,03	ML 14	HN 13
1.5	01.12	1.271	22,5	17	101	0,03	ML 15	HN 13
1.6	01.03	1.918	22,5	17	105	0,05		
KERFI 411								
1.1	01.29	815	22,5	17	86,0	0,02	ML 11	HN 11
1.2	01.03	1.864	22,5	17	102,0	0,04		
1.3	01.11	1.016	22,5	17	86,0	0,02	ML 13	HN 13
1.4	01.10	908	22,5	17	95,0	0,02	ML 14	HN 14
1.5	01.10	908	22,5	17	91,0	0,02	ML 15	HN 14
1.6	01.10	908	22,5	17	98,0	0,02	ML 16	HN 14
1.7	01.03	2.101	22,5	17	115,0	0,05		
KERFI 412								
1.1	01.09	787	22,5	17	85,0	0,02	ML 11	HN 11
1.2	01.08	787	22,5	17	84,0	0,02	ML 12	HN 12
1.3	01.03	2.065	22,5	17	113,0	0,05		
1.4	01.07	787	22,5	17	83,0	0,02	ML 14	HN 14
1.5	01.06	538	22,5	17	78,0	0,01	ML 15	HN 15
1.6	01.06	538	22,5	17	79,0	0,01	ML 16	HN 15
1.7	01.02	1.446	22,5	17	91,0	0,03		
1.8	01.02	1.446	22,5	17	84,0	0,03		

SKRIFSTOFUHLUTI 2. HÆÐ

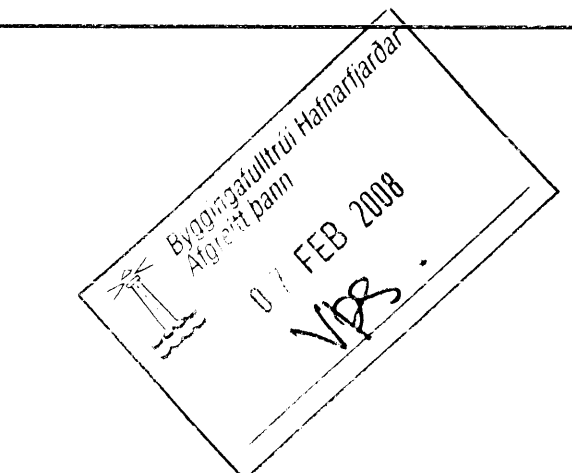
NR		AFKÖST W	MILLIBIL cm	ÞVERMÁL L mm	LENGD m	RENNSLI l/s	MÓTOR LOKI	HITA NEMI
KERFI 409								
2.1	02.21	1.036	22,5	17	70	0,02	ML 01	HN 21
2.2	02.20	819	22,5	17	79	0,02	ML 02	HN 22
2.3	02.19	819	22,5	17	85	0,02	ML 03	HN 23
2.4	02.02	1.772	22,5	17	97	0,04		
2.5	02.18	819	22,5	17	73	0,02	ML 05	HN 25
2.6	02.17	819	22,5	17	79	0,02	ML 06	HN 26
2.7	02.16	819	22,5	17	85	0,02	ML 07	HN 27
KEFI 410								
2.1	02.02	1.790	22,5	17	98	0,04		
2.2	02.15	1.120	22,5	17	104	0,03	ML 02	HN 22
2.3	02.14	1.120	22,5	17	97	0,03	ML 03	HN 23
2.4	02.13	1.120	22,5	17	95	0,03	ML 04	HN 24
2.5	02.12	1.120	22,5	17	103	0,03	ML 05	HN 25
2.6	02.01	1.736	22,5	17	95	0,04		
2.7	02.27,29	1.705	22,5	17	111	0,04	ML 07	HN 27
KERFI 411								
2.1	02.01	1.809	22,5	17	99	0,04		
2.2	02.11	1.120	22,5	17	98	0,03	ML 02	HN 22
2.3	02.10	1.120	22,5	17	105	0,03	ML 03	HN 23
2.4	02.09	819	22,5	17	87	0,02	ML 04	HN 24
2.5	02.08	819	22,5	17	92	0,02	ML 05	HN 25
2.6	02.07	819	22,5	17	97	0,02	ML 06	HN 26
2.7	02.06	819	22,5	17	102	0,02	ML 07	HN 27
2.8	02.01	1.608	22,5	17	88	0,04		
KERFI 412								
2.1	02.01	1.864	22,5	17	102	0,04		
2.2	02.05	819	22,5	17	78	0,02	ML 02	HN 22
2.3	02.04	819	22,5	17	73	0,02	ML 03	HN 23
2.4	02.03	1.467	22,5	17	109	0,04	ML 04	HN 24
2.5	02.03	1.467	22,5	17	104	0,04	ML 05	HN 24

ÞJÓNUSTUHLUTI

NR		AFKÖST W	MILLIBIL cm	ÞVERMÁL mm	LENGD m	RENNSLI l/s	MÓTOR LOKI	HITA NEMI
KERFI 401 UMFERÐARDEILD								
1		2.132	25,0	17	97	0,05		
2		2.132	25,0	17	98	0,05		HN 01
3		2.132	25,0	17	98	0,05		HN 01
4		2.132	25,0	17	95	0,05		HN 01
5		2.132	25,0	17	101	0,05		HN 01
6		2.132	25,0	17	104	0,05		HN 01
7		2.132	25,0	17	103	0,05		HN 01
KERFI 402 ÞJÓNUSTUDEILD								
1		1.885	25,0	17	94	0,05		HN 01
2		1.885	25,0	17	98	0,05		HN 01
3		1.885	25,0	17	97	0,05		HN 01
4		1.885	25,0	17	97	0,05		HN 01
5		1.885	25,0	17	101	0,05		HN 01
6		1.885	25,0	17	103	0,05		HN 01
7		1.885	25,0	17	104	0,05		HN 01
KERFI 403 GARÐYRKJUDEILD								
1		1.775	25,0	17	106	0,04		HN 01
2		1.775	25,0	17	104	0,04		HN 01
3		1.775	25,0	17	108	0,04		HN 01
4		1.775	25,0	17	108	0,04		HN 01
5		1.775	25,0	17	104	0,04		HN 01
6		1.775	25,0	17	102	0,04		HN 01
7		1.775	25,0	17	106	0,04		HN 01
KERFI 404 TRÉSMÍÐAVERKSTÆÐI								
1		1.717	25,0	17	88	0,04		HN 01
2		1.717	25,0	17	94	0,04		HN 01
3		1.717	25,0	17	86	0,04		HN 01
KERFI 405 ÞVOTTAHÚS								
1		1.633	25,0	17	88	0,04		HN 01
2		1.633	25,0	17	95	0,04		HN 01
3		1.633	25,0	17	86	0,04		HN 01
KERFI 406 VATNSVEITA								
1		1.775	25,0	17	106	0,04		HN 01
2		1.775	25,0	17	102	0,04		HN 01
3		1.775	25,0	17	104	0,04		HN 01
4		1.775	25,0	17	108	0,04		HN 01
5		1.775	25,0	17	108	0,04		HN 01
6		1.775	25,0	17	104	0,04		HN 01
7		1.775	25,0	17	106	0,04		HN 01
KERFI 407 LAGERAÐSTÆÐA								
1		1.755	25,0	17	89	0,04		HN 01
2		1.755	25,0	17	87	0,04		HN 01
3		1.755	25,0	17	91	0,04		HN 01
4		1.755	25,0	17	87	0,04		HN 01
KERFI 408 GEYMSLUAÐSTÆÐA								
1		1.788	25,0	17	81	0,04		HN 01
2		1.788	25,0	17	85	0,04		HN 01
3		1.788	25,0	17	79	0,04		HN 01
4		1.788	25,0	17	79	0,04		HN 01

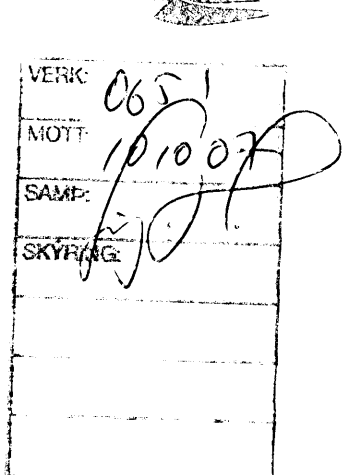
ÚTIHÚS

NR		AFKÖST W	MILLIBIL cm	ÞVERMÁL mm	LENGD m	RENNSLI l/s	MÓTOR LOKI	HITA NEMI
KERFI 413 GEIMSLA								
1		2.288	25,0	17	87	0,05		HN 01
2		2.288	25,0	17	85	0,05		HN 01
3		2.288	25,0	17	97	0,05		HN 01
KERFI 414 SALT-SAND								
1		1.765	25,0	17	87	0,04		HN 01
2		1.765	25,0	17	85	0,04		HN 01
3		1.765	25,0	17	97	0,04		HN 01
KERFI 415 ÞVOTTAÐSTÆÐA								
1		2.288	25,0	17	87	0,05		HN 01
2		2.288	25,0	17	85	0,05		HN 01
3		2.288	25,0	17	97	0,05		HN 01



ÁRTUN SAMRÆMINGARHÖNNUNAR

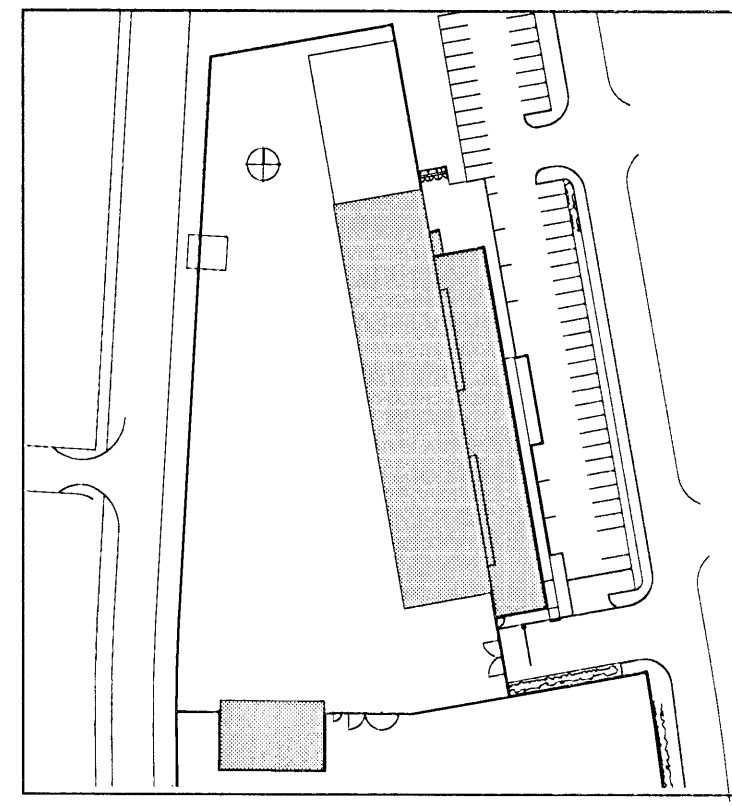
BATTERIÐ



TILVÍSANIR:

ALMENNAR SKÝRINGAR SJÁ BL. NR. L1-A-01

BR. DAGS. BREYTING REKNI TEKNI



VSÓ RÁÐGJÖF

FRAMKVÆMDASVIÐ HAFNARFJARÐAR

HITAKEFI
GÖLFHITASKRÁ

HANNAÐ/TEKNI: EHT/SH
YERFARND: FMB
SAMÞYKKT: KVA
KT: 30087-3903
KVARDI: REKNI NR. 08.10.2007
VERKUR: TEKNI NR. 07102

L4-A-01