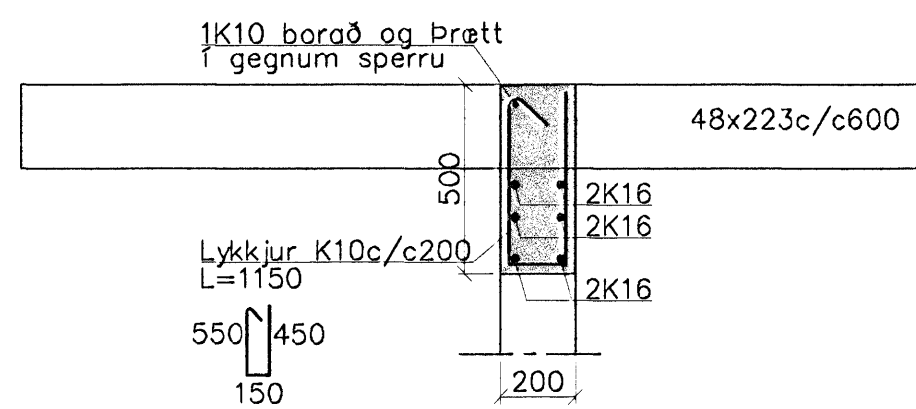
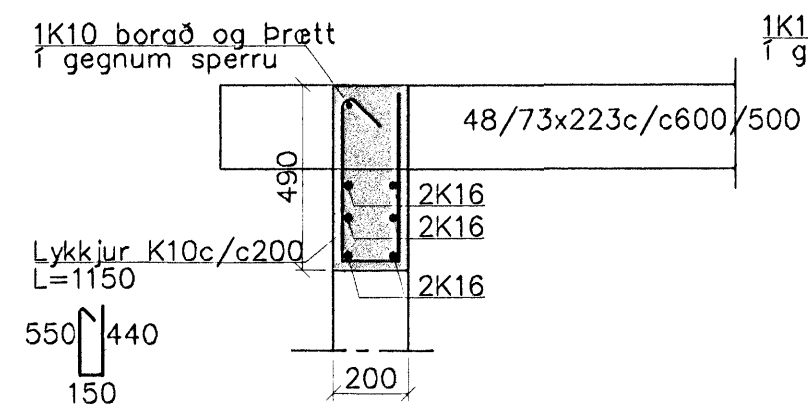


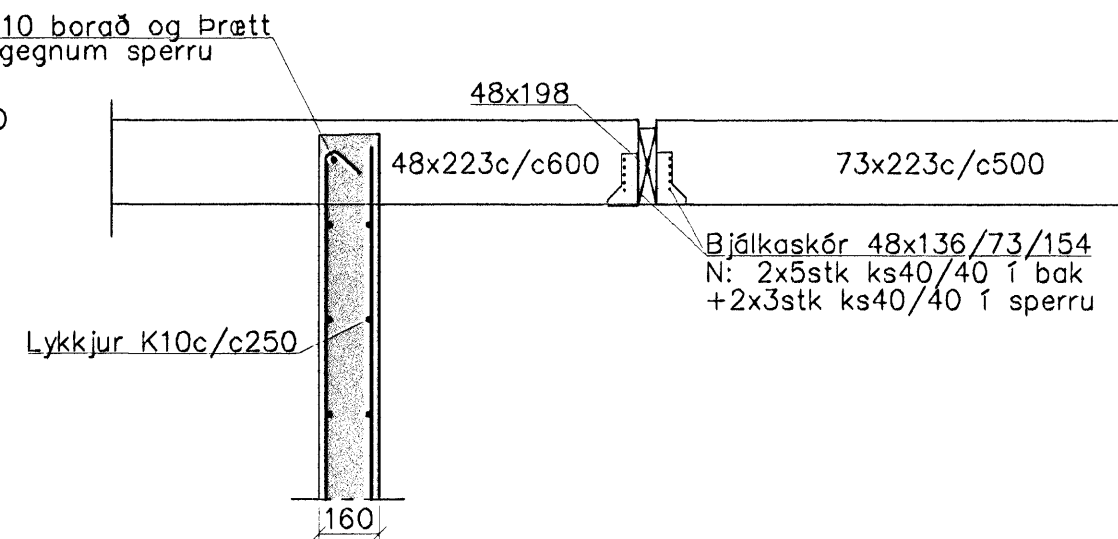
Þ90 1:20



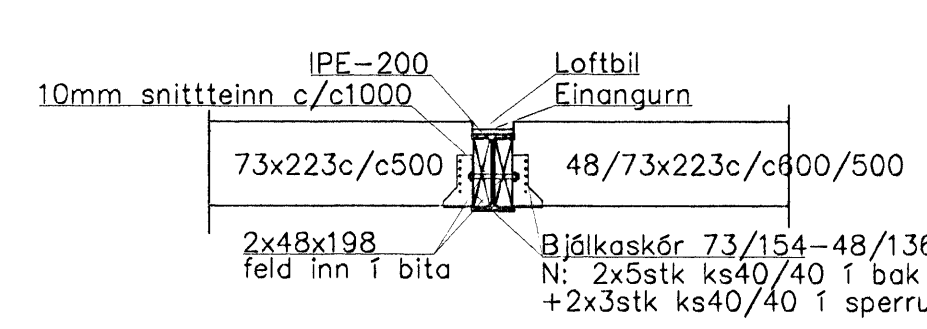
Þ91 1:20



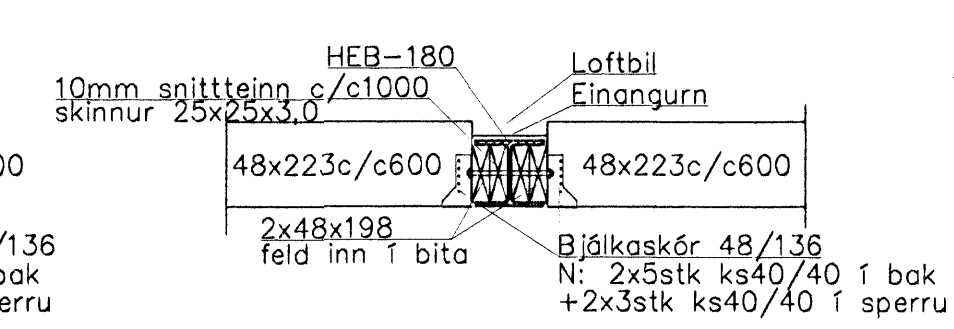
Þ92 1:20



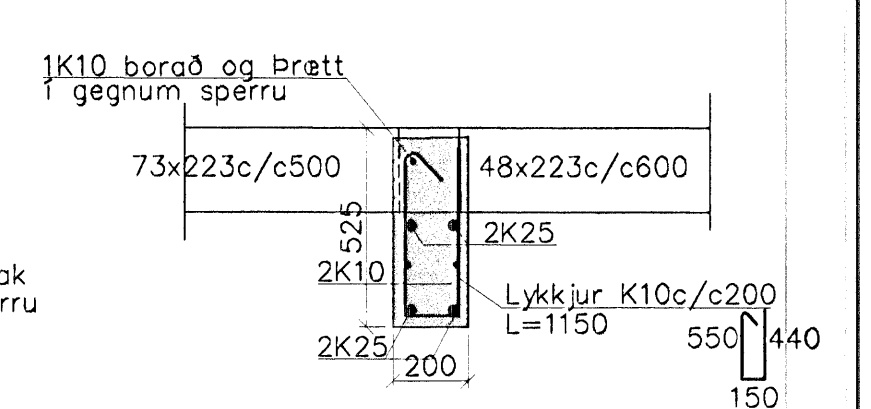
Þ93 1:20



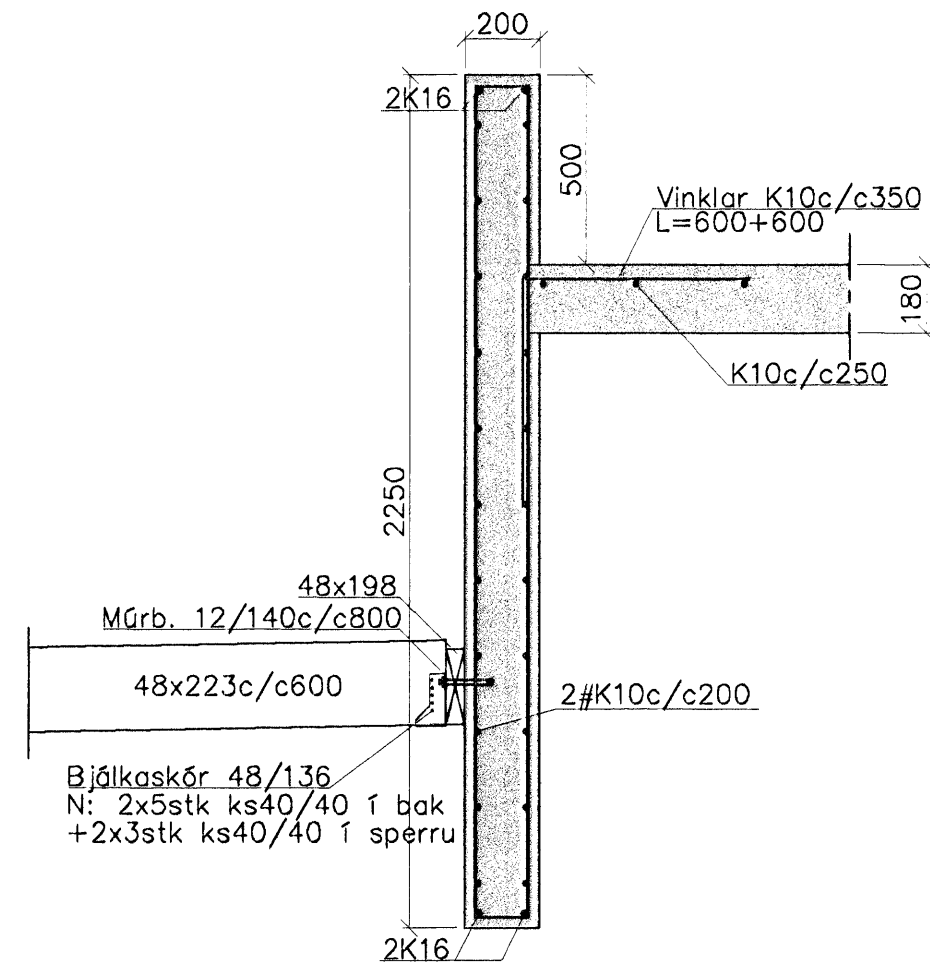
Þ94 1:20



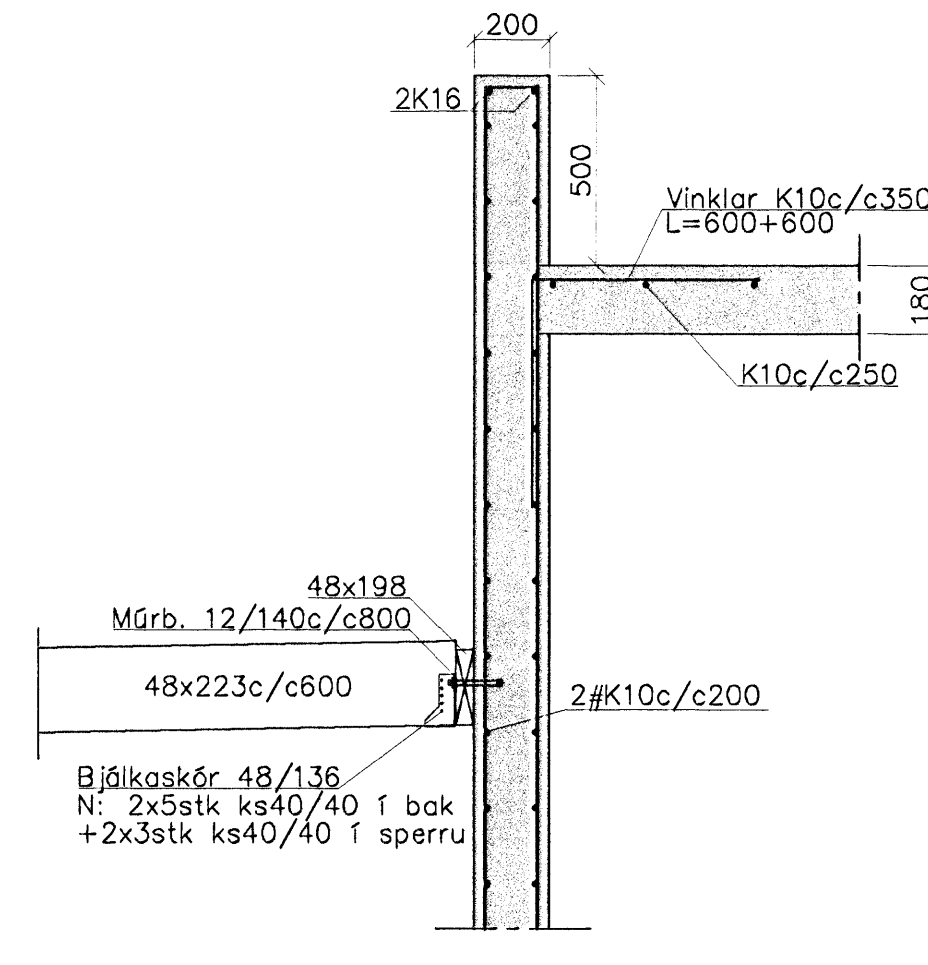
Þ95 1:20



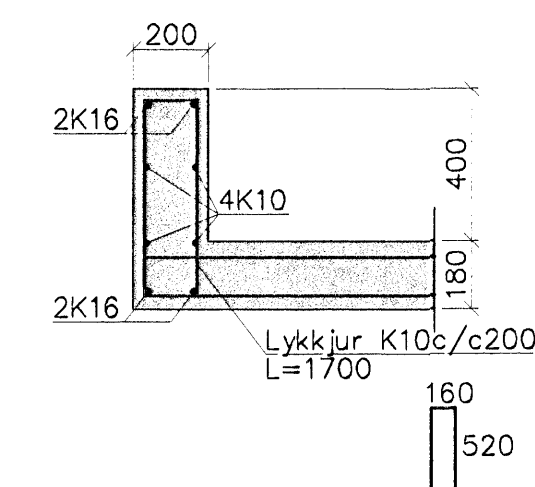
Þ96 1:20



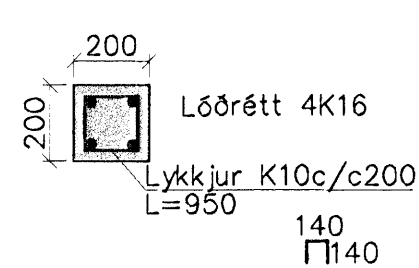
Þ97 1:20



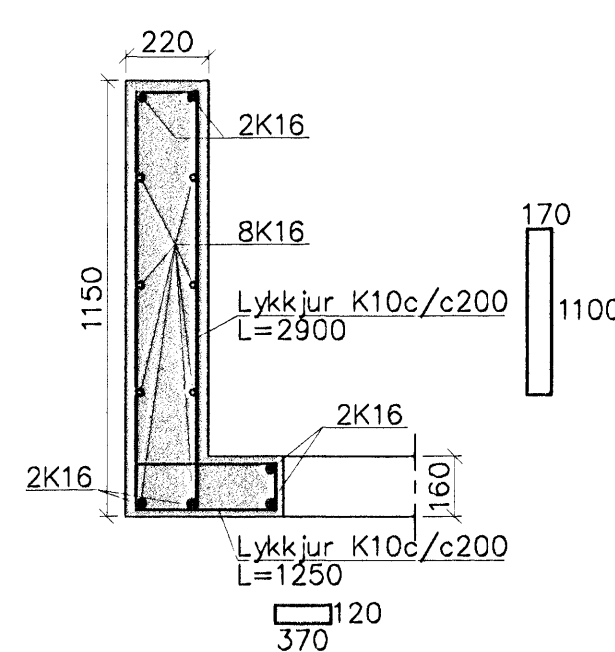
SN90 1:20



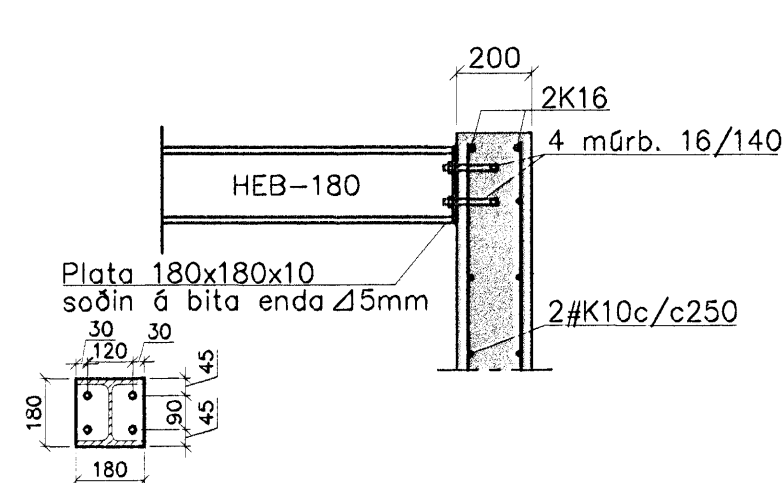
S91 1:20



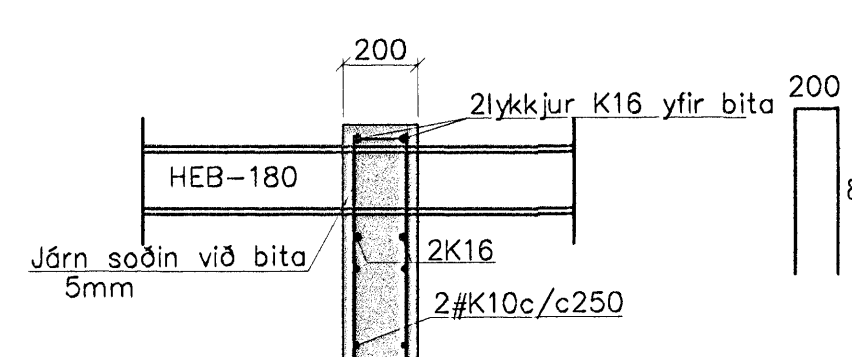
S92 1:20



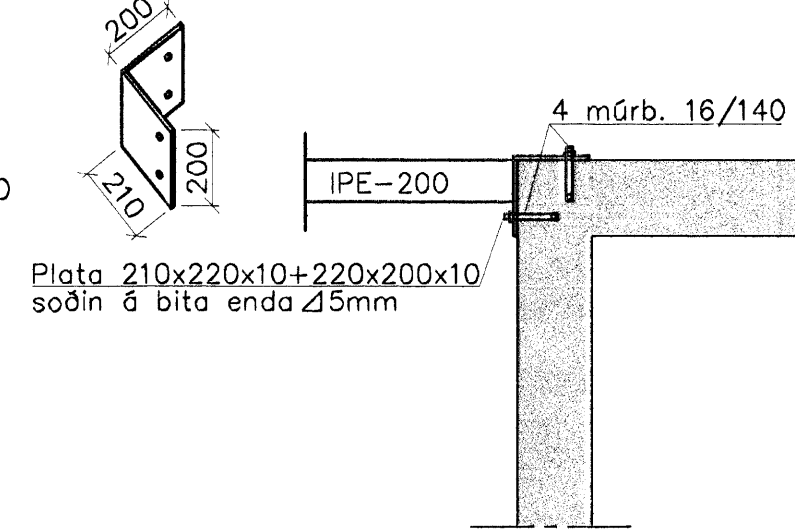
F90 1:20



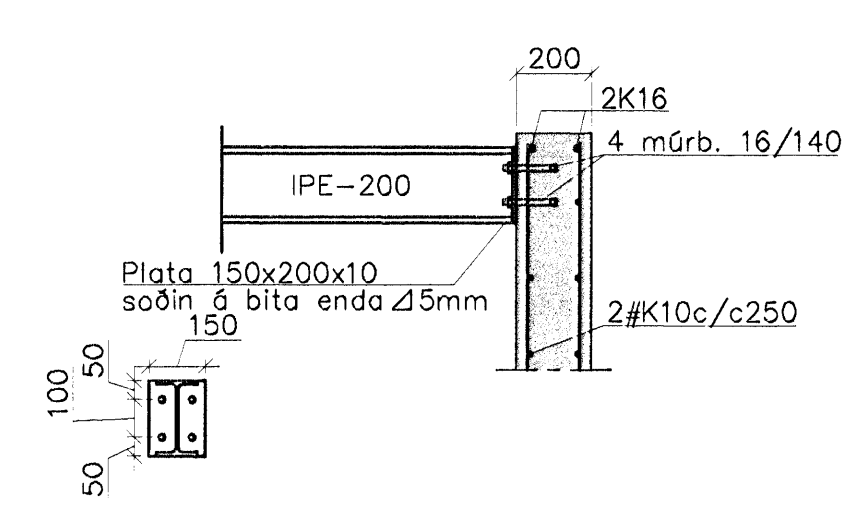
F91 1:20



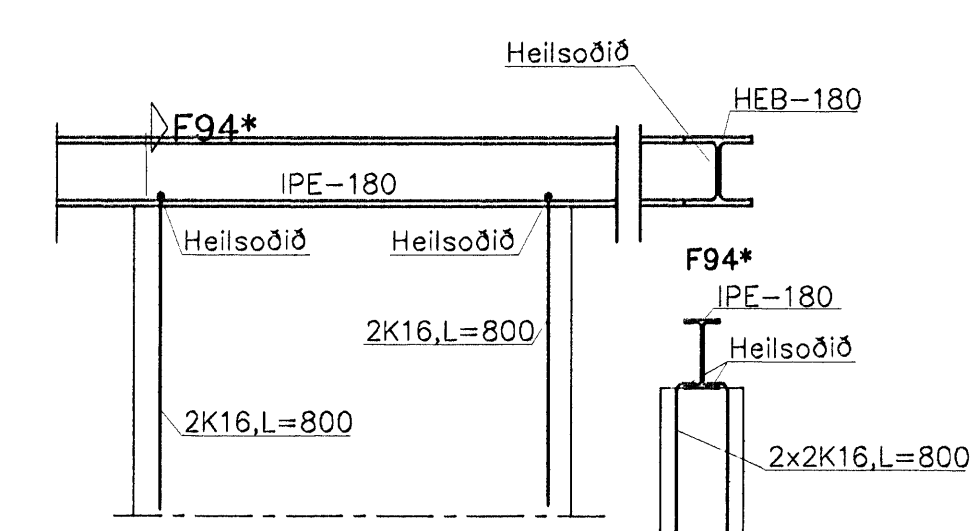
F92 1:20



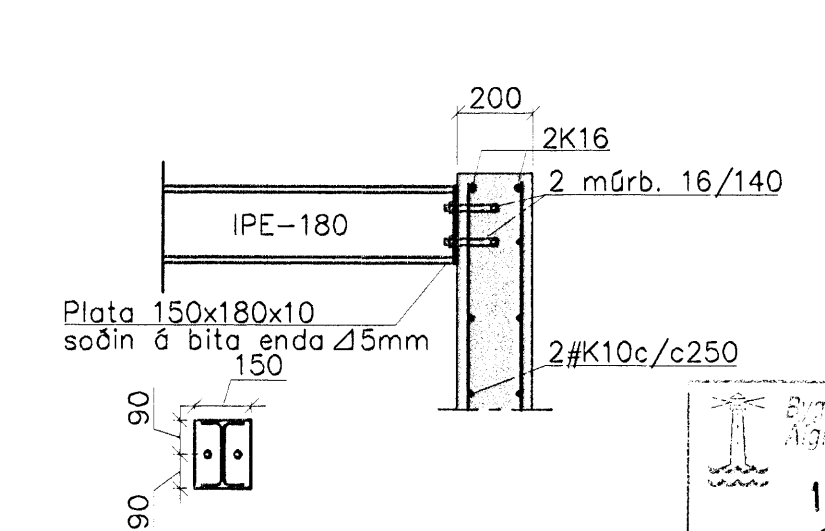
F93 1:20



F94 1:20



F95 1:20



Steypa S250.
Sement > 300 kg/m³, vatnssementstala (v/s) <0.55, loftinnihald 5-6%, sigmál 80-100mm.
Steypa og steypustyrktarstál KS40 skv. IST-14/DS-411.
Steypuhúla & járnur: veggir úti 30mm, veggir inni 20mm, plötur úti 30mm, plötur inni 15mm, bitar 25mm.
Meðfram dyrum, gluggum og opum komi 2K16, er nái minnst 800mm. Út fyrir brúnir opa nema annars sé getið.
A: merkir 2#K10c/c500, L=1500mm, í efri og neðri brún plötu. Hönnun og framkvæmd verksins skal vera í samræmi við gildandi staðla og reglugerðir.
Allur Þaksaumur og tengi "gaiv." Sperrur úr gæðaflokki T1

18 NOV. 2005

Breytingar	DREKAVELLIR 18, HAFNARF.	
Nr. Dags. Nafn	Verkfræðistofa Þráinn & Benedikt Laugavegi 176, 108 Rvk. Sími: 593 1770, 598 7775, Fax: 598-7701 Netfang: verkfræðistofa@verkfræðistofa.is	HAK T HS S M 1:20 Nr. B502 Dags. sept. '05 000638-4939
	Burðarvirki veggir og Þak 9. Hæðar	