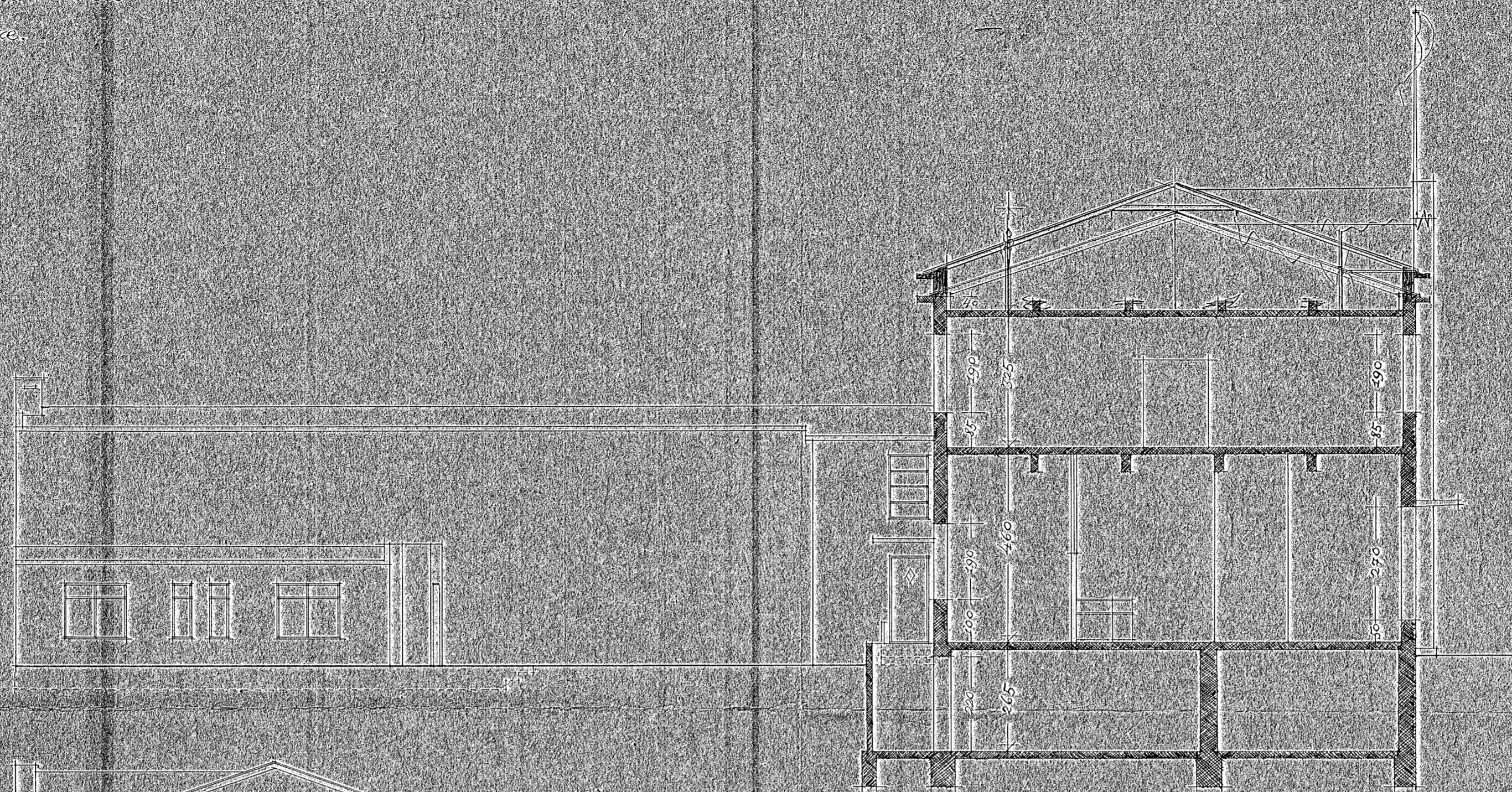


KNÍKMYNDAFHJÓÐ og SKRIFSTOFUR
 fyrir Heilmannsfærðar bæ.

Sveigðar

Teldingur 5.



SWEDING a-a

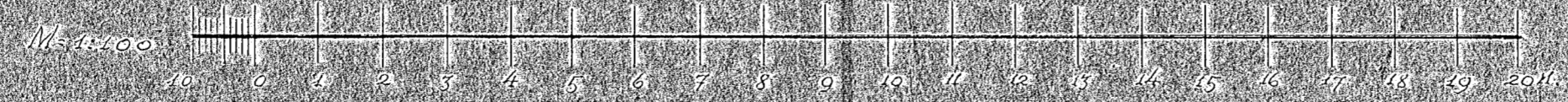
50
 16
 10-35A
 16-60



SWEDING d-d

24 af skuldb
 slun 3 m.

15 frá vðu
 1 m þar átt



Reykjavík, 10 maí, 1910
 Sigrí Hælleousson
 arkitekt