

|      | Connection outside      | Connection inside       |
|------|-------------------------|-------------------------|
| N 1  | 3" ANSI B16.5/300lbsStd | 2" NPT, socket, half    |
| N 2  | 2" ANSI B16.5/300lbsStd | 2" NPT, socket, half    |
| N 3  | 2" ANSI B16.5/300lbsStd | End cap                 |
| N 4  | 2" ANSI B16.5/300lbsStd | 3" ANSI B16.5/300lbsStd |
| N 5  | DN 250/273/DIN 2635     | 1/2" NPT female         |
| N 6  | 2" ANSI B16.5/300lbsStd | 3/4" NPT male           |
| N 7  | 2" ANSI B16.5/300lbsStd | 1/2" NPT female         |
| N 8  | 2" ANSI B16.5/300lbsStd | 3/4" NPT male           |
| N 9  | 4" ANSI B16.5/300lbsStd | 3/4" NPT, socket, half  |
| N 10 | 3" ANSI B16.5/300lbsStd | 1/2" NPT female         |
| N 11 | 3" ANSI B16.5/300lbsStd | 1/2" NPT female         |
| N 12 | 3" ANSI B16.5/300lbsStd | 1/2" NPT female         |

Contents: Propan/butan

Design data:  
 Calculation: 26-B-1018  
 Design code: BS 5500, Category I  
 Design pressure: 14.4 bar  
 Max. working pressure: 14.4 bar  
 Design temperature: 50°C  
 Allowed temperature, max/min: +30°C./-20°C.  
 Corrosion allowance: 1,0 mm  
 Materials: See Bill of Materials

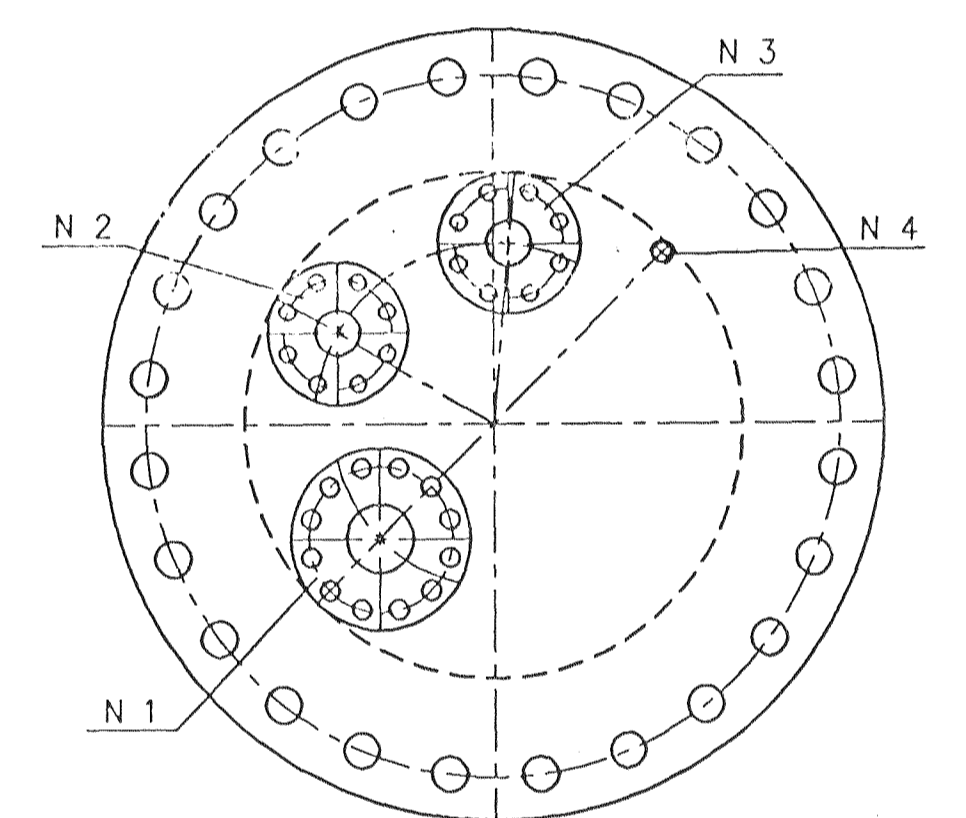
Heat treatment:  
 Domed ends: Hot formed acc. to AD-Merkblätter HP 7/1 and HP 7/2.

Welding procedure:  
 Preheat in accordance with specifications from the steel supplier.  
 WPS 4000-01: Longitudinal- and circumferential butt welds.  
 WPS 4000-02: Welding manhole and pipes into tank.  
 WPS 4000-03: Welding pipes/sockets and pipe/welding neck flange.  
 WPS 4000-04: Fillet welds on lifting lugs and doubling plates.  
 PQR: Yes.  
 Where nothing else prescribed, a = 0,7x t min.

Inspection and tests:  
 Inspection authority: Directorate of National Labour Inspection Denmark.  
 Test pressure: 19,5 bar.  
 Pressure test by: Directorate of National Labour Inspection Denmark.  
 NDT: Extent: DEP 34.51.11.30 App. C  
 Performance: ISO 1106/1  
 Requirement: Min IIW blue  
 MPI: Extent: 100% on fillet welds between manhole/pipes/blockflanges/sockets and wessel.  
 Performance: BS 6072.  
 Requirement: No crack indications

Ultrasonic: None  
 Production test: Yes

Measurements:  
 Dimension LxBxH: 26900x3700x5200 mm.  
 Surface: ca. 313 m<sup>2</sup>.  
 Weight: ca. 38000 kg.  
 Weight filled with water: ca. 299000 kg.  
 The tank is only to be lifted in empty state!



3/1.1995. Sigstjórnir skilpálag yfirlit og skilpála laðna. eingöngu með 50l. Skilpála tekla.

Brunamálastofnun ríkisins  
 SAMBYKKT  
 29 JUN 1994  
 Sbr. bréf 29/6 1994  
 Thóðdóir Arnason  
 E. Thóðdóir Arnason

| Roug              |       | ERIK ROUG A/S |      | Mærugvej 1-5 |             | DK-7400 Herning, Denmark |          |
|-------------------|-------|---------------|------|--------------|-------------|--------------------------|----------|
| Number            | 20100 | Year          | 1994 | Class        | 1           | Material                 | SA 305 B |
| Design pressure   | 14.4  | Test pressure | 19.5 | Application  | BS5500 1994 | Class                    | 1        |
| HERNING - DENMARK |       |               |      |              |             |                          |          |

| Rev.   | Dato     | Sign. | Rettelse  | Sign. | Dato   | Skala |
|--|----------|-------|---|-------|--------|-------|
| D  | 31.04.07 | Ap    | Nye indv. afsliminger, pos 11/13/15 flyttet.  |       |        |       |
| C  | 04.02.11 | J7/01 | 3 stk. afslimningsringe HE1808 erstattet af 5 stk. HE1408. Underlagsplader pos. 3 større. |       |        |       |
| B  | 04.02.08 | Ap    | Pos B indtøjet, pos 10/12/15 tilføjet.  |       |        |       |
| A  | 04.02.02 | J7/01 | Stuðse flyttet. Præveplade tilføjet.  |       |        |       |
| Erstatning for                               |          |       |   |       |        |       |
| 261 m <sup>3</sup> propan/butan storage tank |          |       | 26-1-1018   |       | Rev. D |       |
| ø3600  |          |       |   |       |        |       |