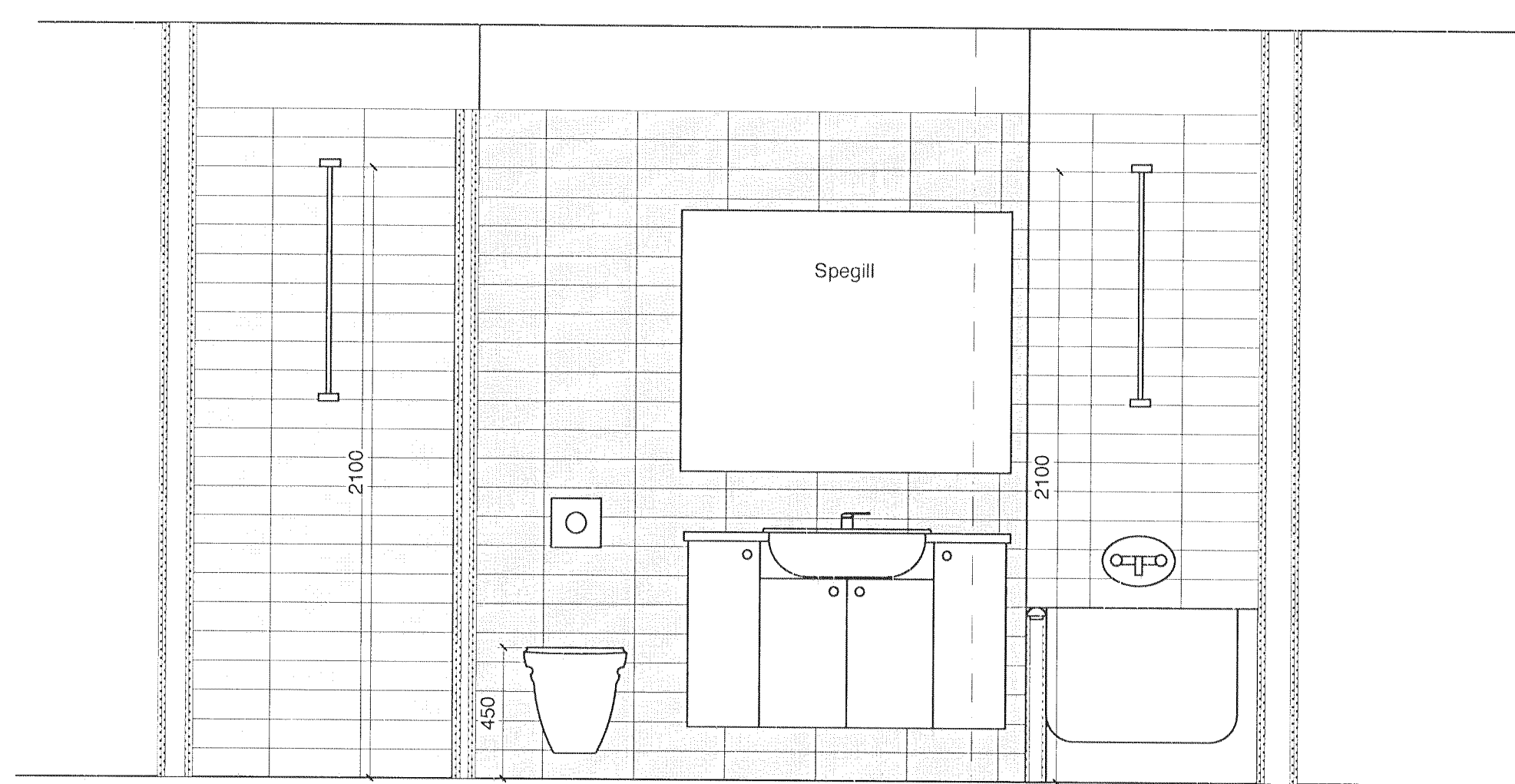
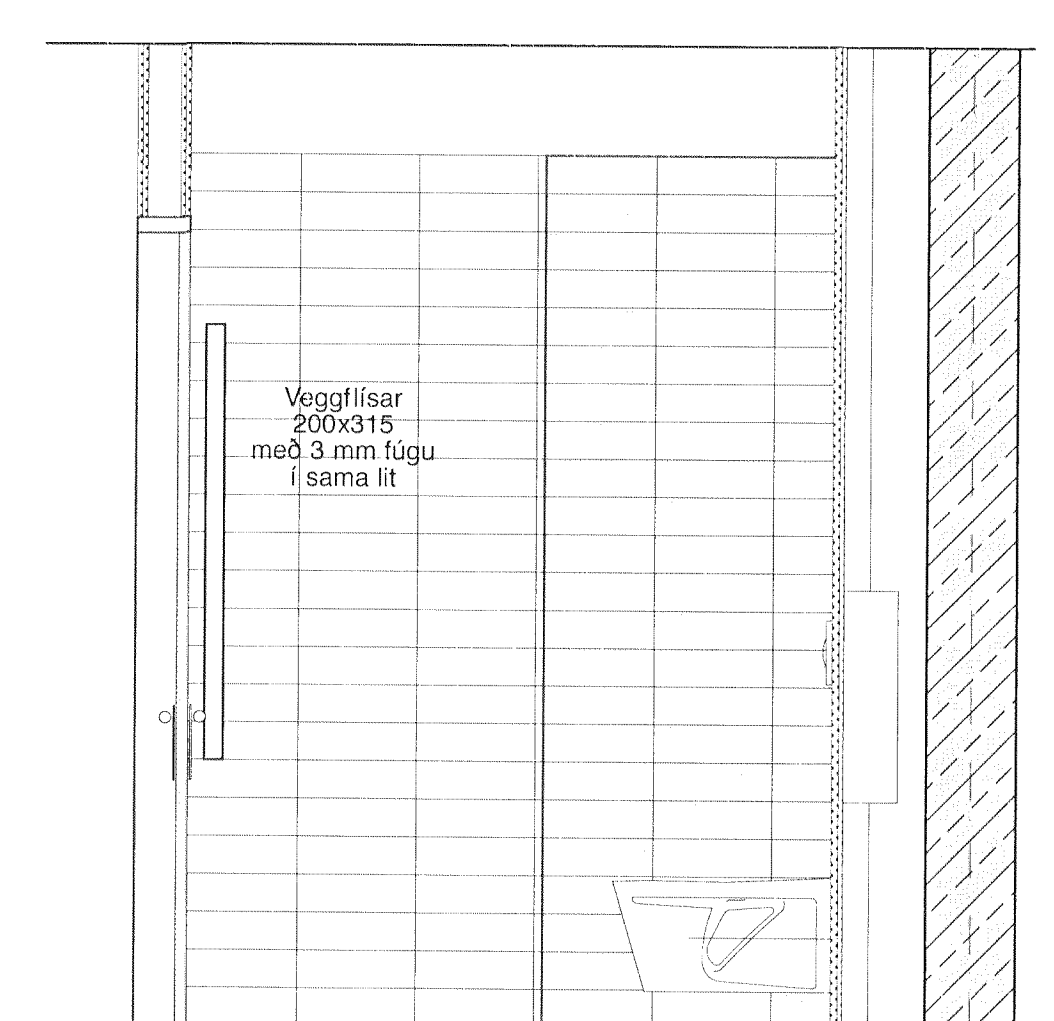


GRUNNMYND; 1:20

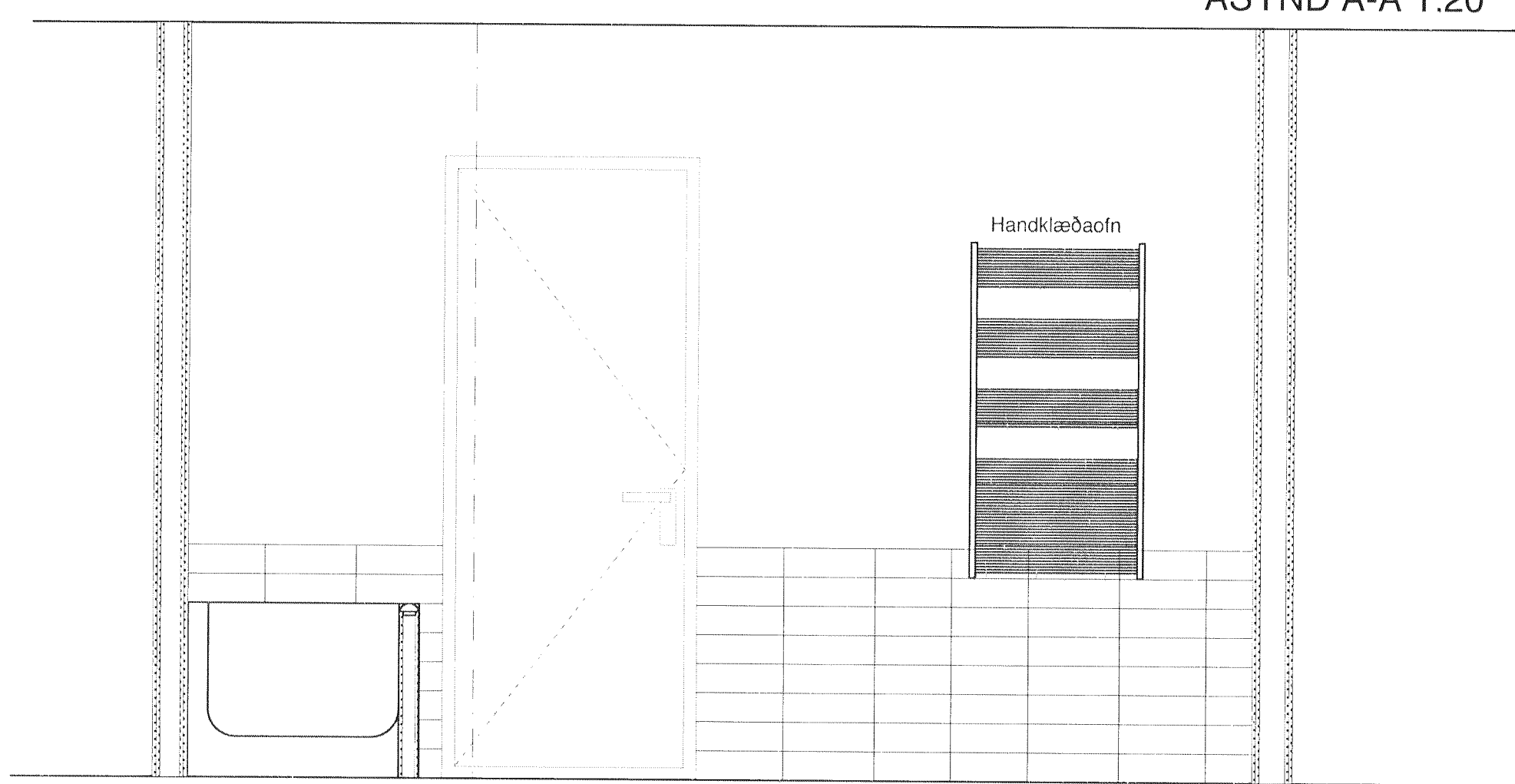
NB 7
BAD B-3C, ÍBÚÐIR NR.:
 05-07



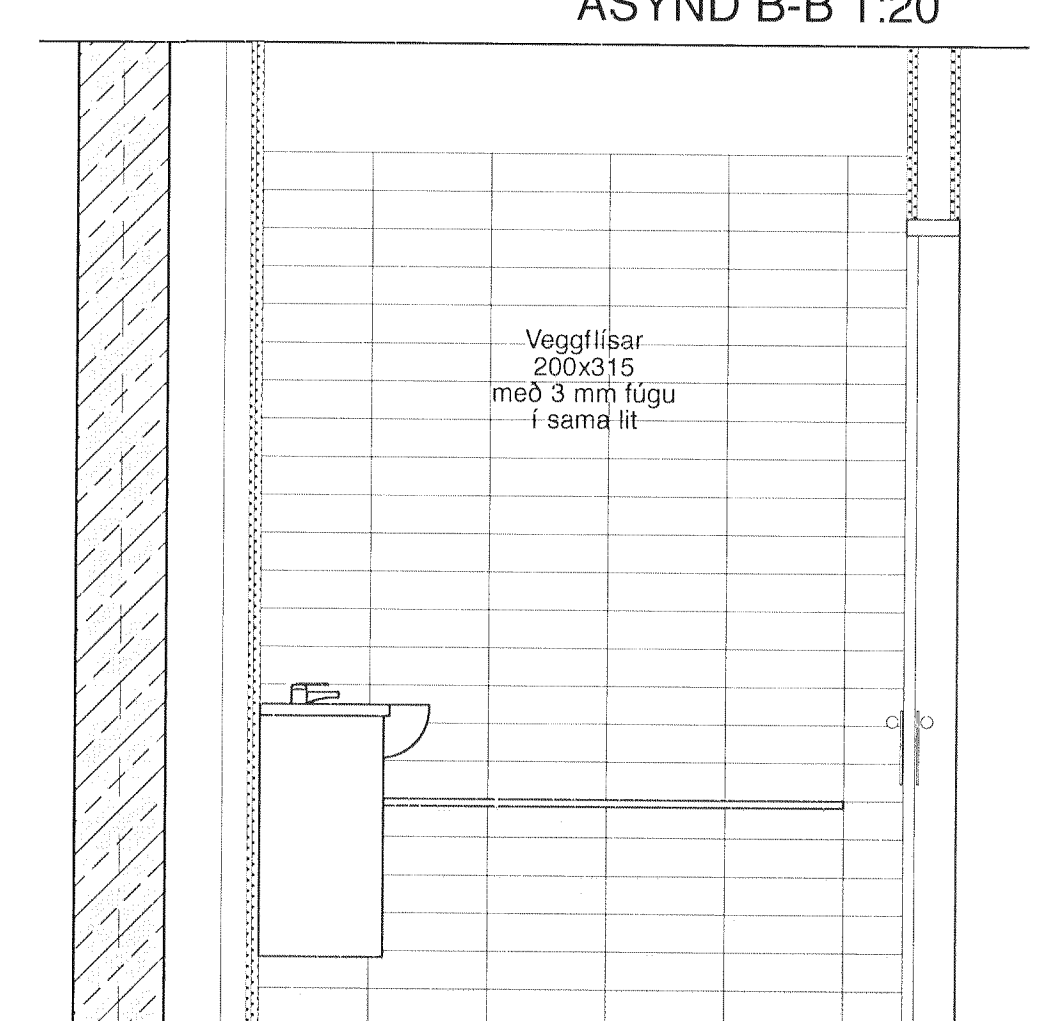
ÁSÝND A-A 1:20



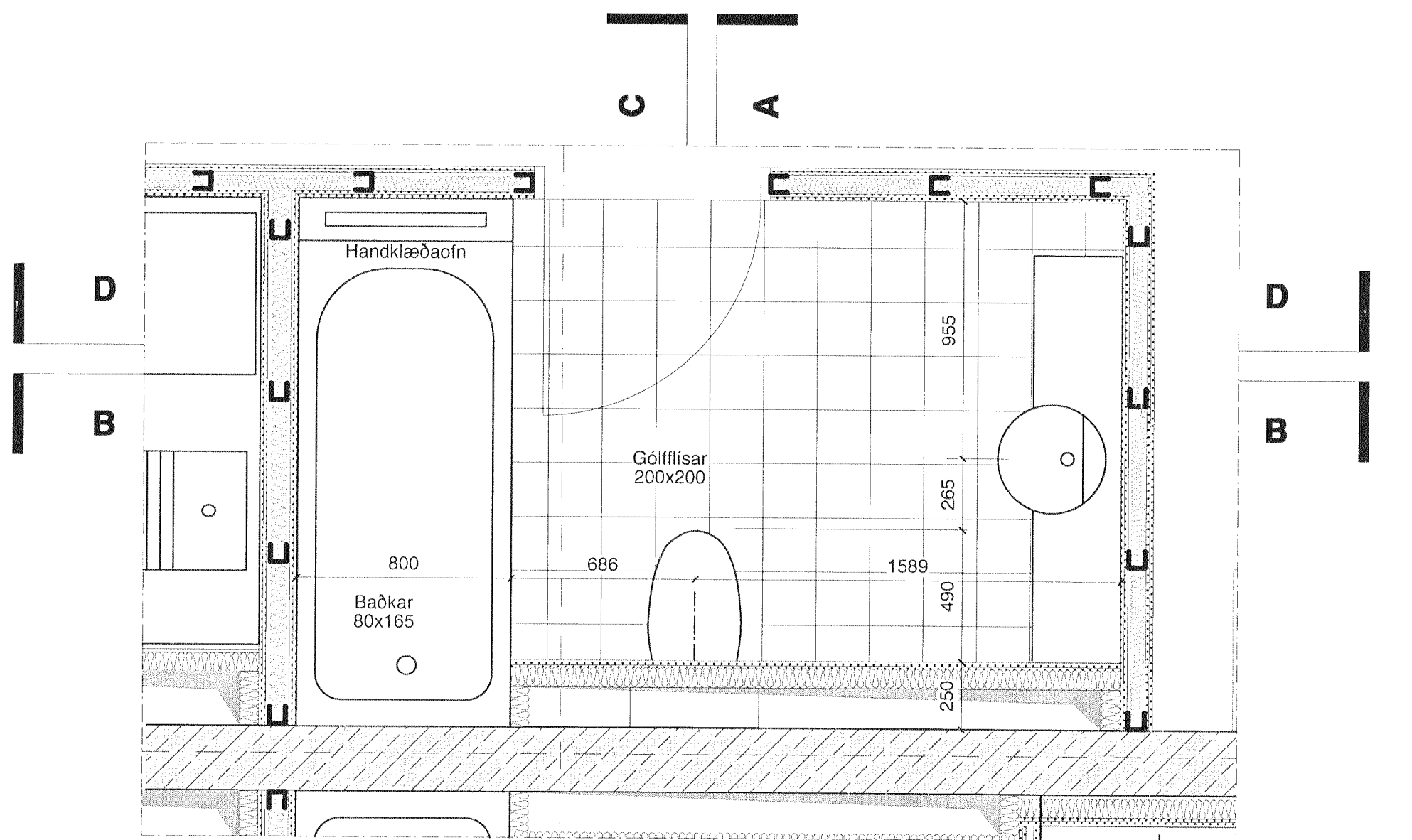
ÁSÝND B-B 1:20



ÁSÝND C-C 1:20

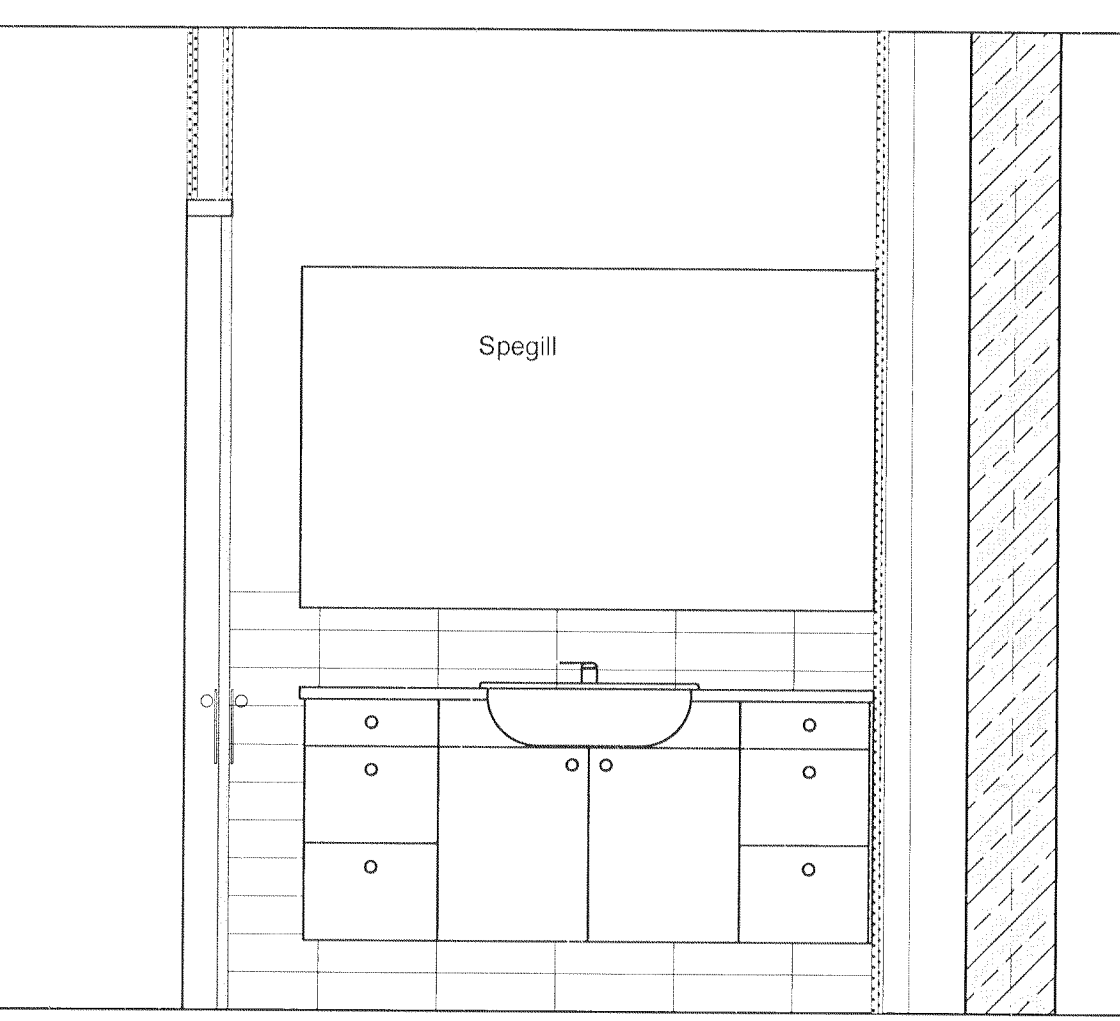


ÁSÝND D-D 1:20

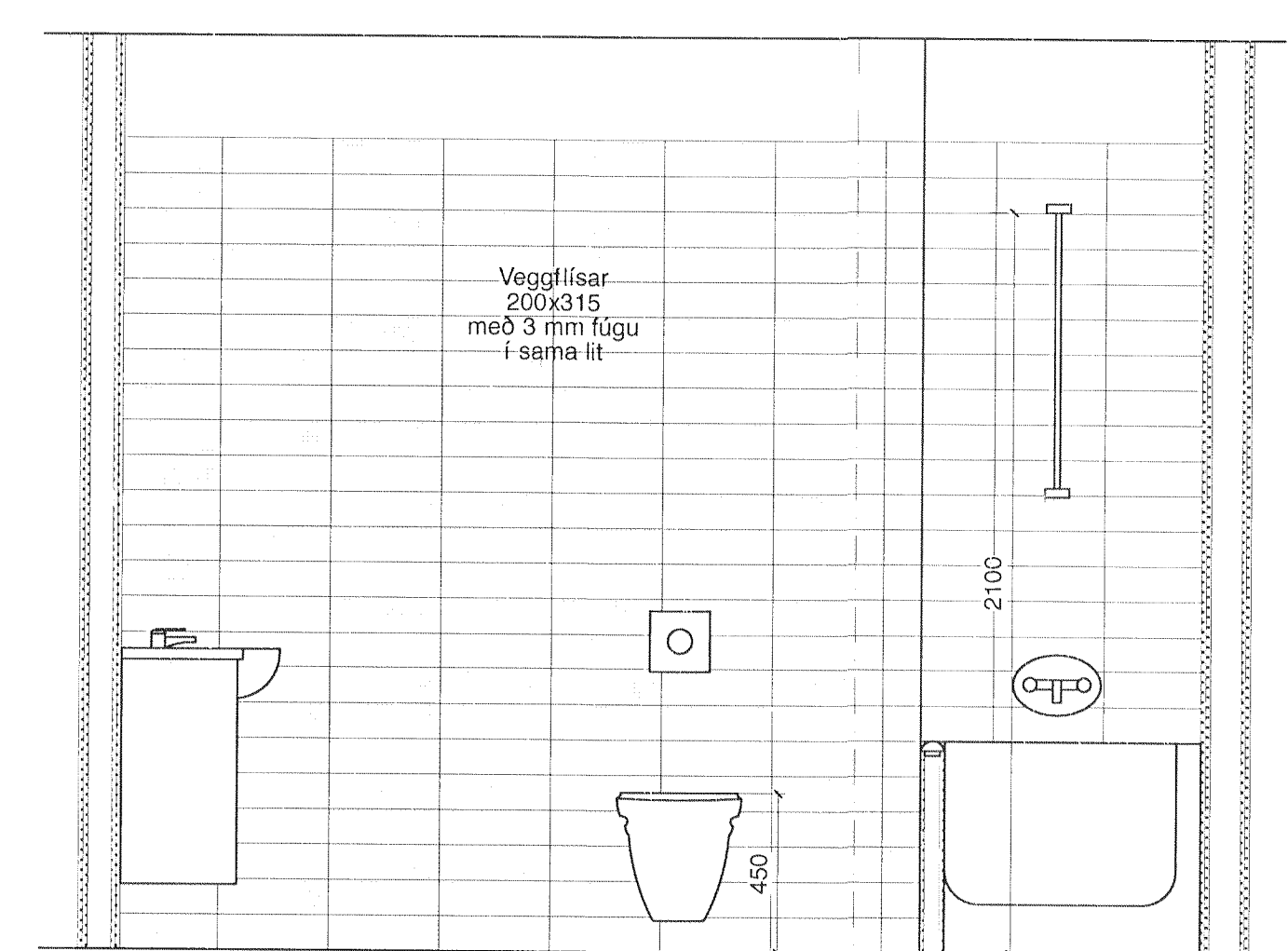


GRUNNMYND; 1:20

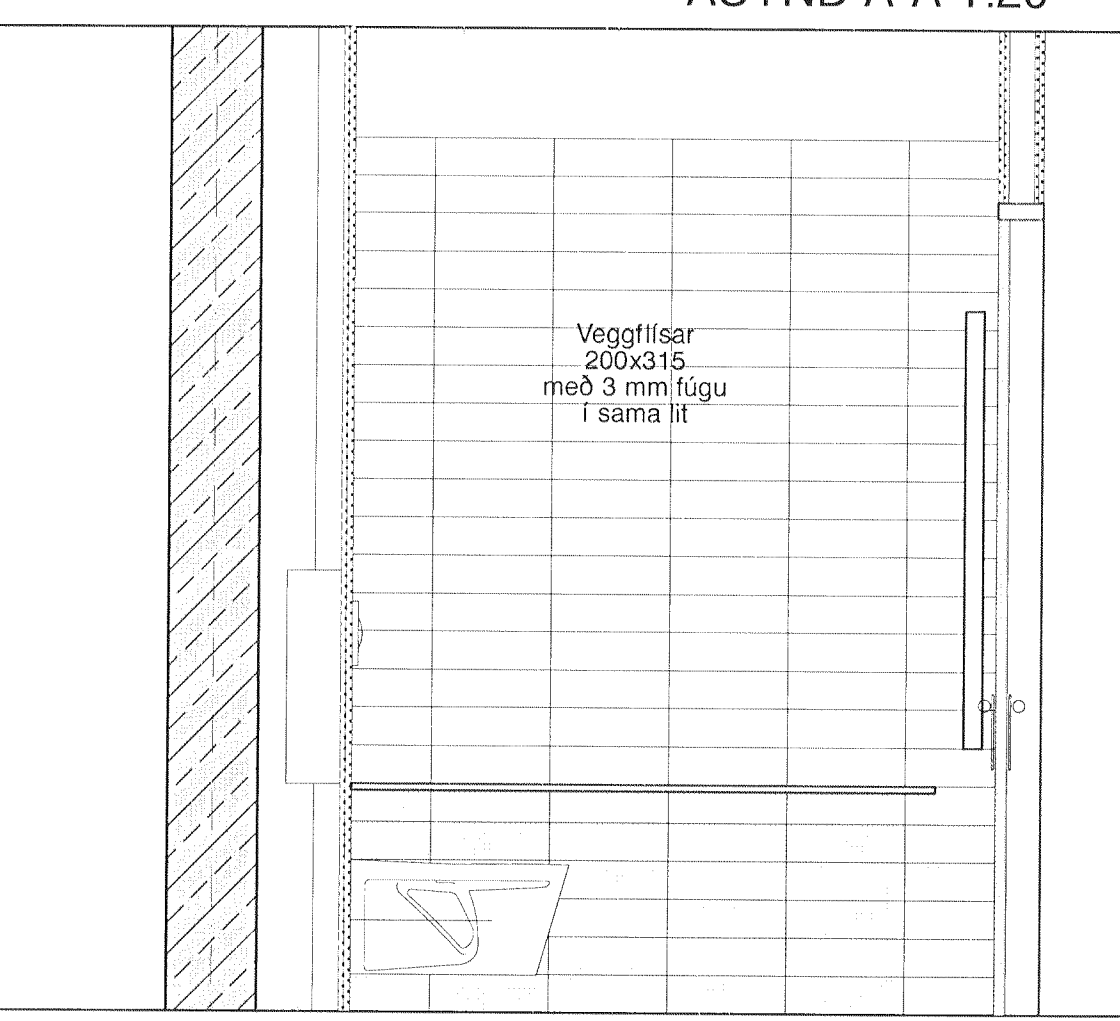
NB 7
BAD B-4, ÍBÚÐIR NR.:
 01-07



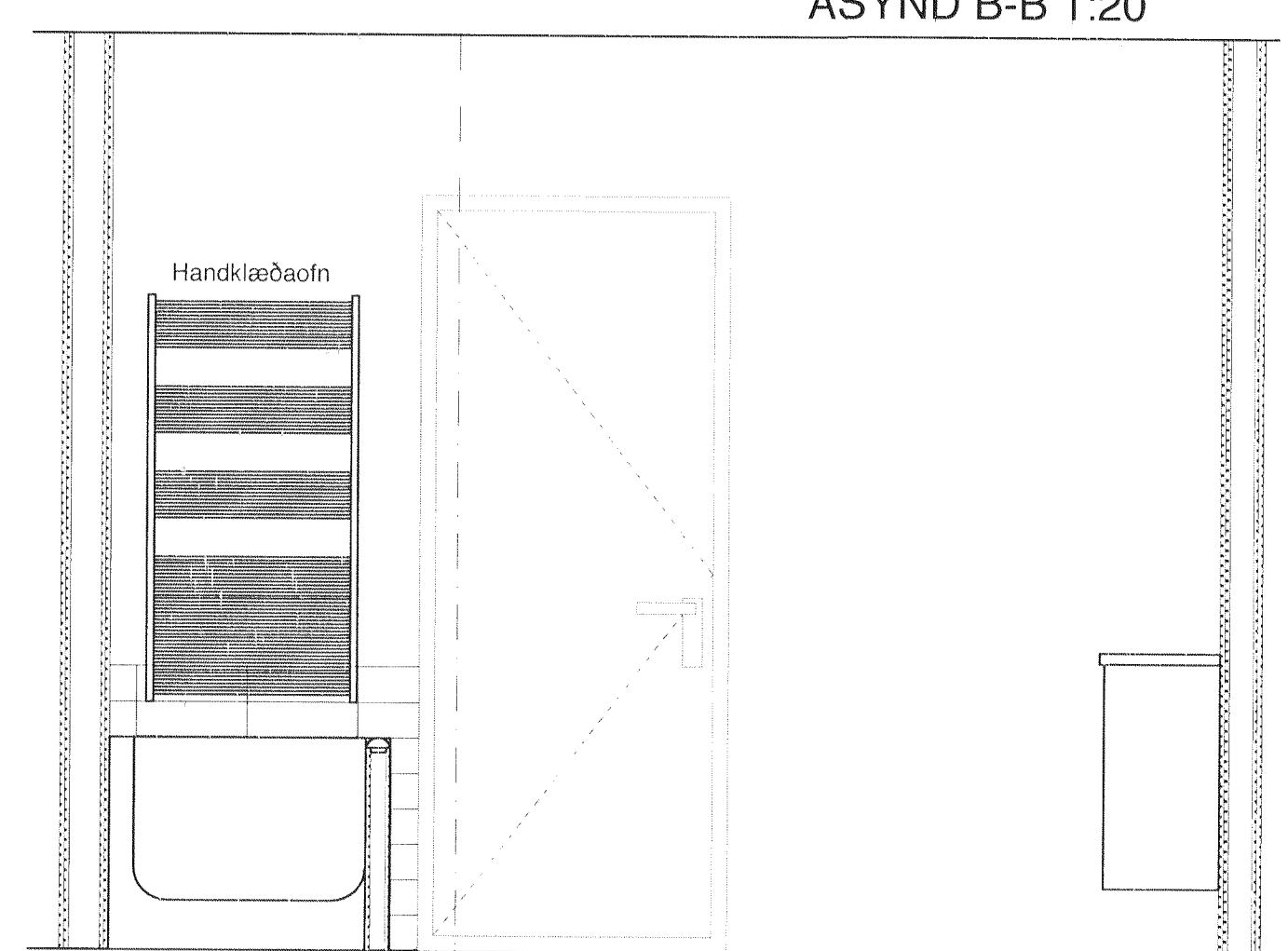
ÁSÝND A-A 1:20



ÁSÝND B-B 1:20



ÁSÝND C-C 1:20



ÁSÝND D-D 1:20

Byggingafulfrói Hafnarfjarðar
 Móttekið þann
 15 AUG 2013

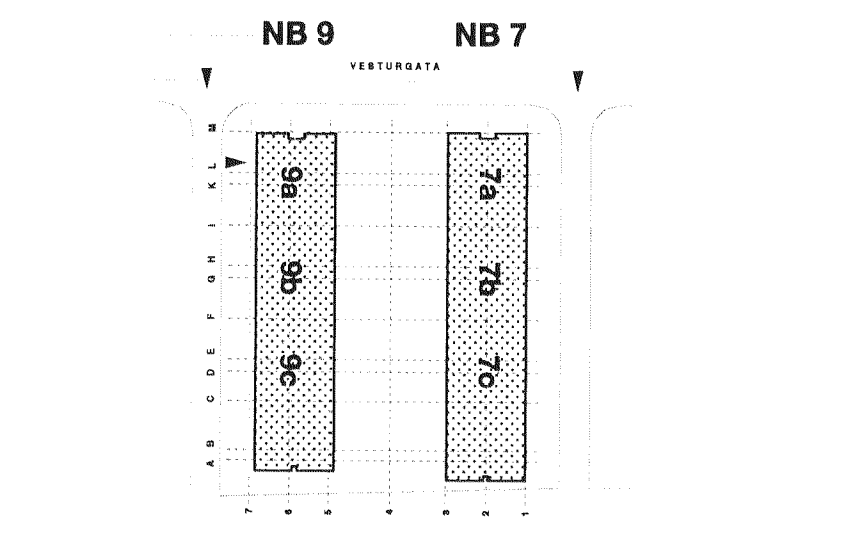
• ÖLL MÁL STAÐFERIST AÐUR EN FRAMKVEMDIR HEFJAST.
 • MÆLD EKKI AF TEIKNINGUM.
 • ÖLL MÁL ERU Í MÍN NEMA ANNAD SÉ TILGREINT.
 • ÖSAMRÆMI TEIKNINGUM TIL KYNNIST ARKITEKT TAFARLAUST.
 • TEIKNINGAR SPODAST MEÐ HILFSÖN AF MEYFLJÓGANDI VEKILSINGU OG
 ÖRUM VIDEIGANDI FYLGGÖGNUM ÁSAMT VIREIGANDI FYLGGÖGNUM
 ANNAHRA HÖNNUÐA.
 • TEIKNINGUÁR STAFERI MELIKVARÐA GILDA ÁVALT UMFRAM TEIKNINGAR Í
 SMERFI MELIKVARÐA.
 • FYLGA SÖL FVIRKVELUM EFNISFRAMLEIÐNA NEMA ANNAD SÉ
 TILGREINT.
 © pk-arkitektar

GNF	GÓLFVINDURFALL	LR	LOFTFRÆSING
EB	EFRI BRUN	FG	FRÆSINGU-GOLF
NB	HEÐRI BRUN	ST	STRENGTEYPA
		BS	BRUNSLANGA
		HSL	HANDELSKVIÐEKI
		BO	BORÐUNARFOP

STEYPA	ÚTLIÐUR YFIR	ÚTKANTUR
HLAÐIN VEGGUR	GRÖÐUR	STEYPA
LETUR VEGGUR	MÁTULUR	HEÐAR
EMINGUR	L = ± 0.00 LANGKÓTI	KÓTI STEYPA
	G = ± 0.00 GANGSTETT	HEÐARÓTI
	GÁT Í GOLF	FRÆSINGU GOLF
	GÁT Í VEGG	FR ST
IBRANNAÐAR		INNHURÐIR
01 01 01 HERBERGJANUMER		FR
		ÚTLIÐUR
		GLUGGAR

L
K
J
I
H
G
F
E
D
C
B
A

Handklæðaofn og flísar lagfr.
 DREYING: ÁM. 26.03.2013 a
 DAGS: DR



NORÐURBAKKI
 FJÖLBÝLISHÚS

VERKREIÐI:
SNYRTINGAR

TEKNI NR.: **NB 7 - 432 - A**

VERK NR.: 06006
 DAGS: 29.09.06
 MKV: 1:20
 VISTUN:

HÖNNUNARSTIG: FULLNADARHÖNNUN
 HANNAÐ: **PK ARKITEKTAR EHF**
 SAMMYKKT: 680504-2880

PK-arkitektar ehf.
 ERLUAS 2 221 HAFNARFJÖRÐUR
 SÍMI: 551.8050 FAX: 551.8077 NETFANG: palmar@pk.is