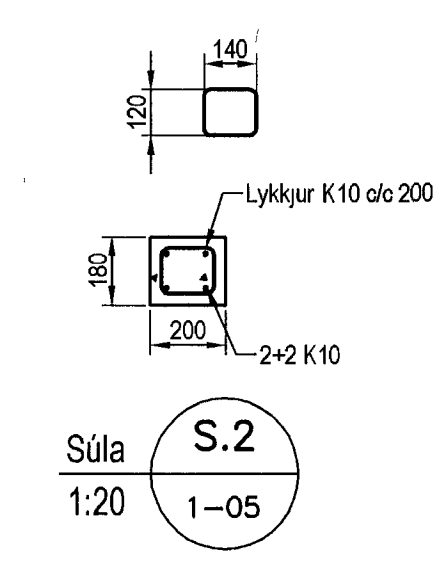
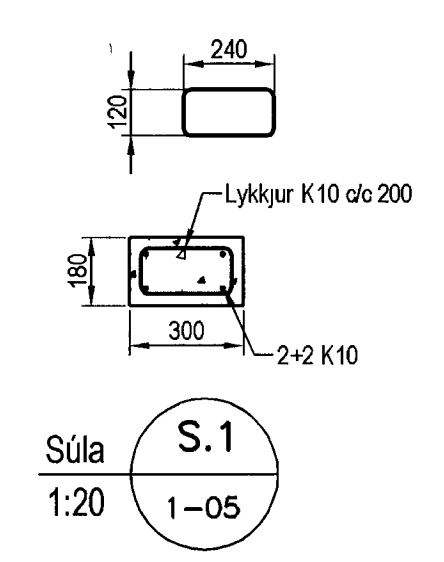
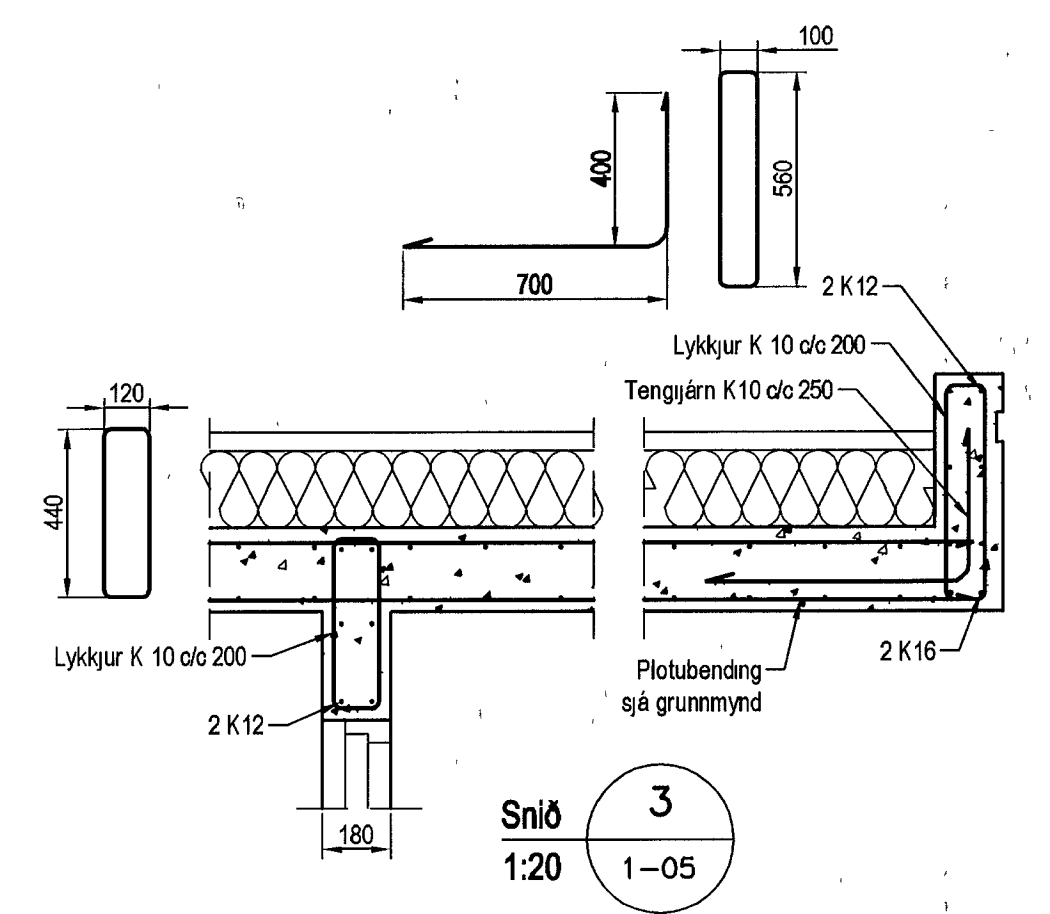
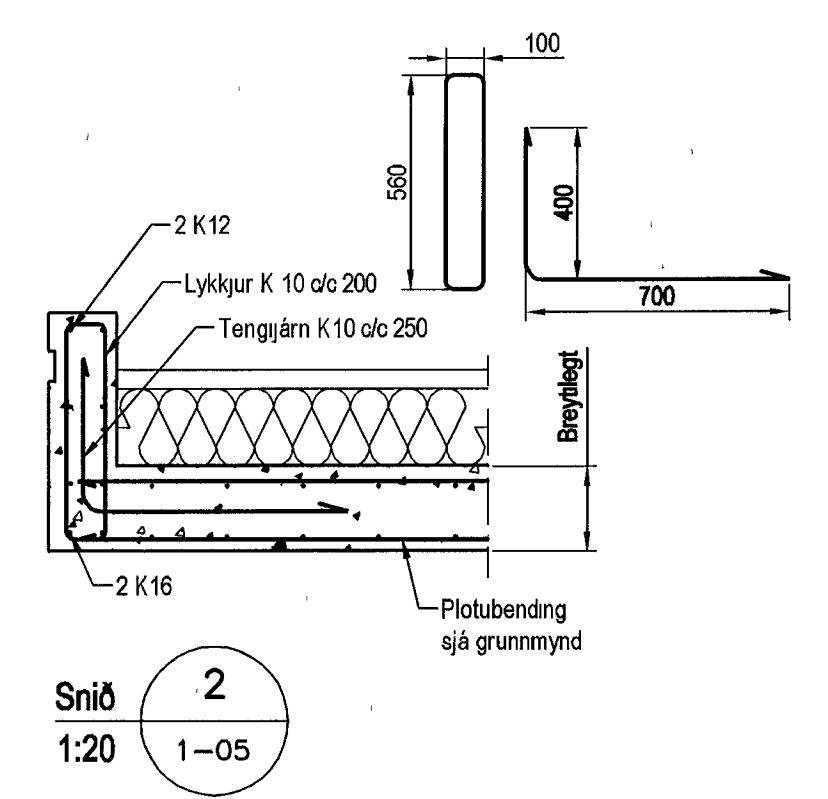
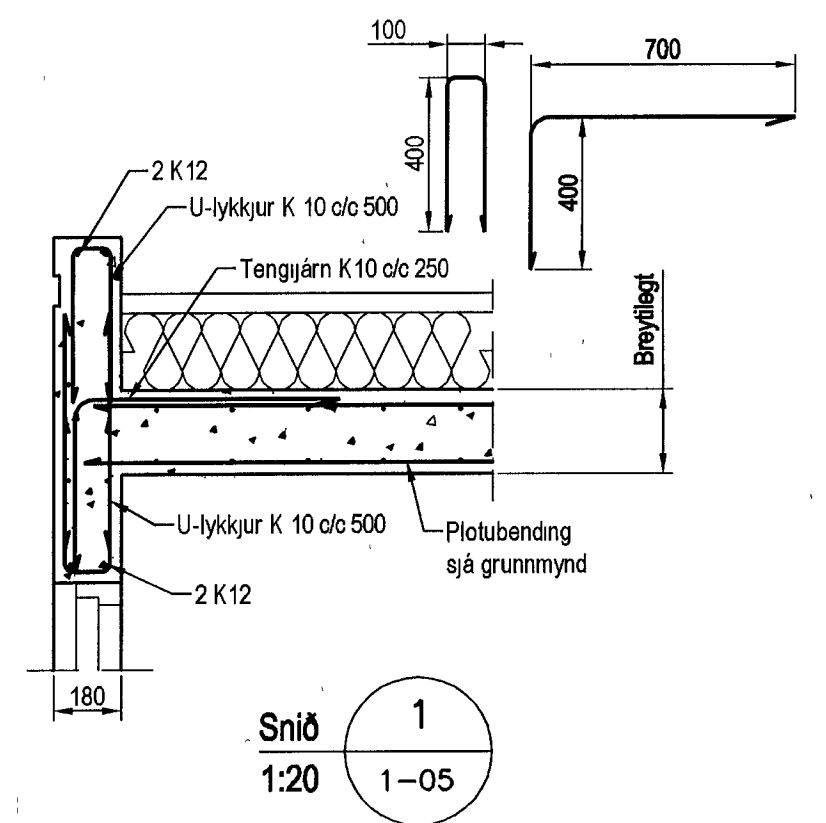


Veggir 3 hæð, Plata yfir 3 hæð, Grunnmynd, 1:50

Skýringar

- Almennar skýringar sjá blæð 00-01
 Stappa
 Veggir
 Brúðstokkur C25/28 samkv. ENV 206-1 2000
 Vatnsementstala skal vera minni en 0,55
 Loftmagn 5-7%
 Stigmál 60-80 mm
 Plötur
 Brúðstokkur C30/37 samkv. ENV 206-1 2000
 Vatnsementstala skal vera minni en 0,55
 Loftmagn 5-7%
 Stigmál 60-80 mm

- Álag á plötur
 Eignibýgnd 5,5 kN/m²
 Létur milliveggr 1,0 kN/m²
 Notaleg á plötur 2,0 kN/m²
 Notaleg á stiga 4,0 kN/m²
 Notaleg á svalir 4,0 kN/m²



Utgáfa	Breyting	Dagsetning	Hannað
B1	Bendingu breytt	10.09.2013	S.H.
Sveinbjörn Hinriksson Byggingatæknifræðingur KÍ 160851-2529 Brekkugötu 8 Hafnarfirði Sími 555-4008, 661-9851 Netfang svennis@emnet.is		Staður Dalsás 2 Hafnarfirði Skýring Plata yfir 3 hæð	
Hannað / Teknað	Kvarði 1 50 1:20	Dagsetning 10.9.13	Verktí 08-12
			Tekn nr 1-05