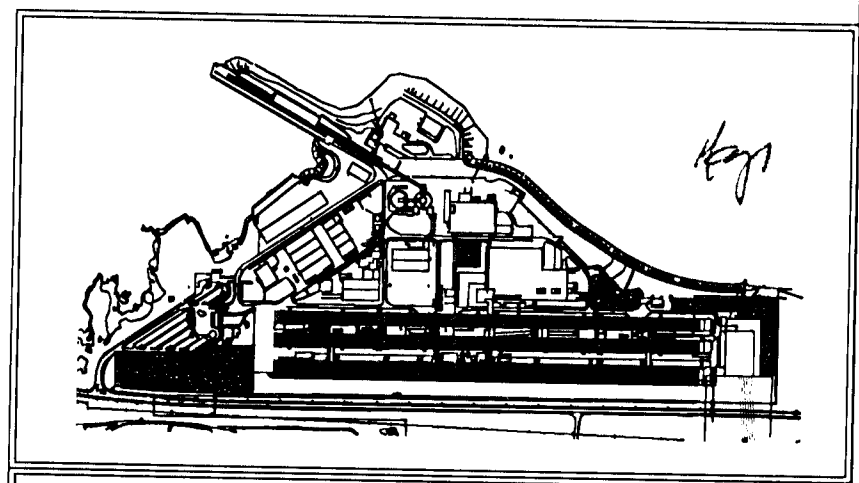
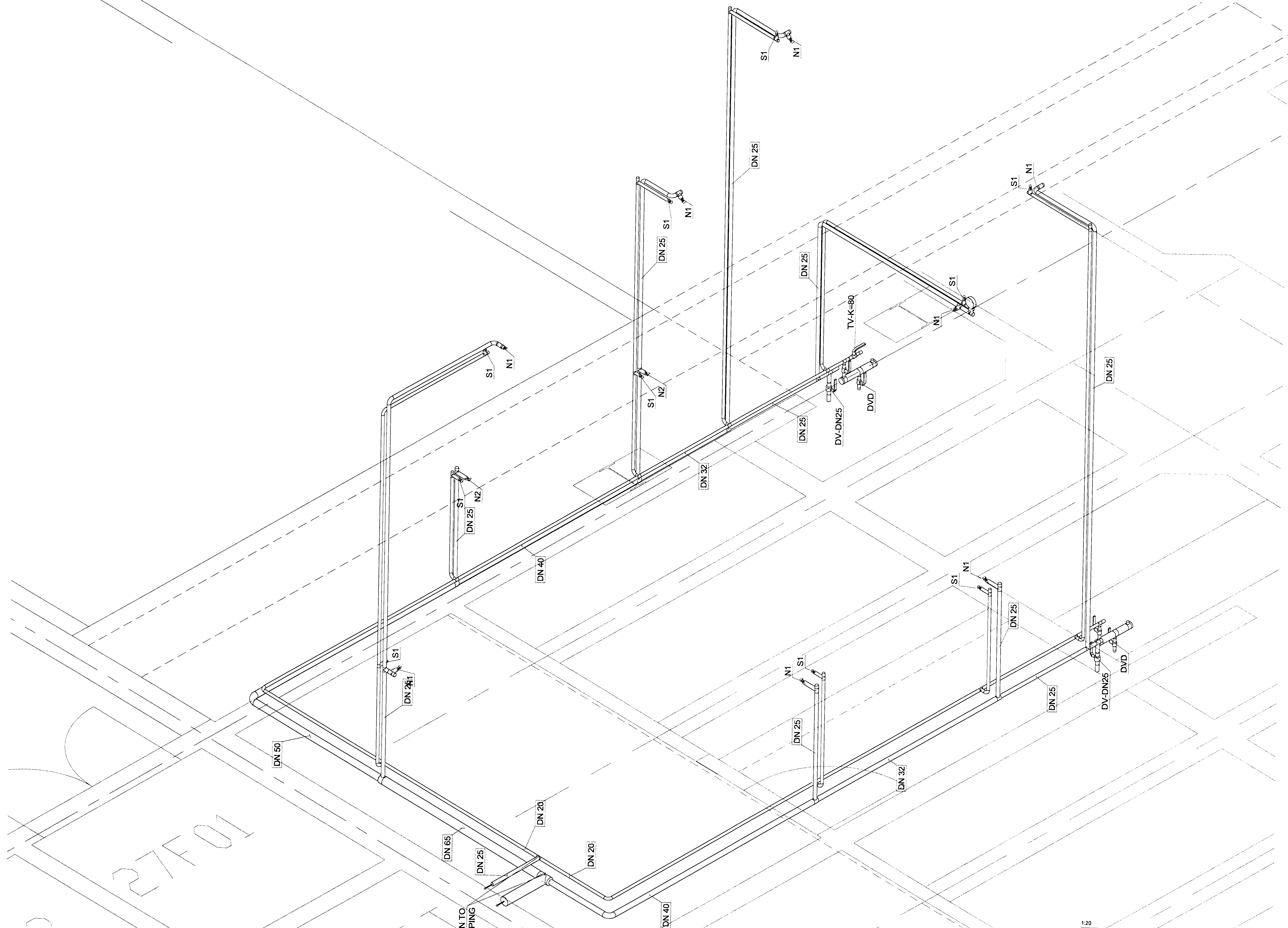


Samþykkt þann
07 FEB 2012
Sveinbjörn Gunnarsson / Hafnarfrétt
Eftir S. Gunnarsson

Níels Indriðason
Nít.



Skýringar:
Legend:

S1 = Standard spray sprinkler, K=80, DN15, cromed, 10 pcs.
N1 = Open spray nozzle, tyco D3 or compatible, K = 43, spray angle 95°, 8 pcs.
N2 = Open spray nozzle, tyco D3 or compatible, K = 43, spray angle 140°, 2 pcs.

DV = Drain valve
DVD = Drain valve dry
TV = Test valve
PM = Pressure meter
All pilot line pipes are DN 20
All pipes are galvanized

C:\DP\01\DP\400 - Reduction\410 Substation\Drawings\Mechanical\DP-411-K2-092-008.dwg

Útg. nr	Rev. no	Liðing	Description	Dagsetning	Date	Har/Þn	Des/Dwn	Yfir	Old	Nokk	heim	Nokk	heim	ISAL	Þn
2			ISSUED FOR CONSTRUCTION	2011.12.08		PB									
1			ISSUED FOR REVIEW	2011.10.24		Slj									

This drawing is the property of Rio Tinto Alcan Iceland Ltd. and handed out for personal use only. It may neither be copied nor made available to others without permission of Rio Tinto Alcan Iceland Ltd. The receiver is liable for any misuse.

Stærð: A1
Mkvi: Scale: 1:20
Format: A1
Dimensions without tolerances according to ISO 2768-1 medium.

HRV ENGINEERING

Dagsetning / Date	2011.01.28
Hannað / Designed	Slj
Tekn / Drawn	Slj
Verktaki / Supplier	HRV
Tekn.nr.verktaka / Supplier drw.no.	IDP-411-K2-092-008
Samþykkt / Approved	Yfir / Chkd BJ
Húti of. / Part of:	

IPU 410 - SUBSTATION SPRINKLER SYSTEM 01 ISOMETRIC LAYOUT

TRANSFORM BAYS

RioTintoAlcan

ISAL Yfirfari og skráð, dags / ISAL Checked, date
ISAL Samþykkt, dags / ISAL Approved, date

Flakur nr.: Blað nr.: Nasta bl.:
Kostn.nr.-Cctno. / 36n.nr.-Eqno
AKS
C