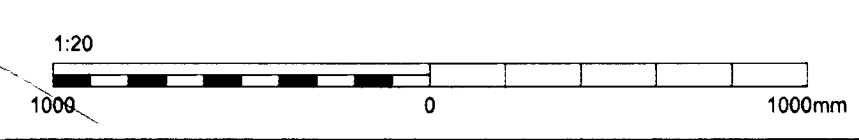
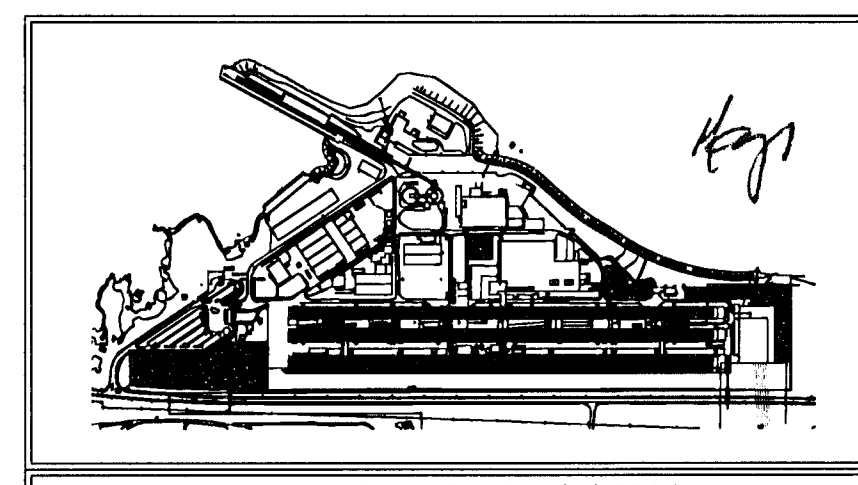
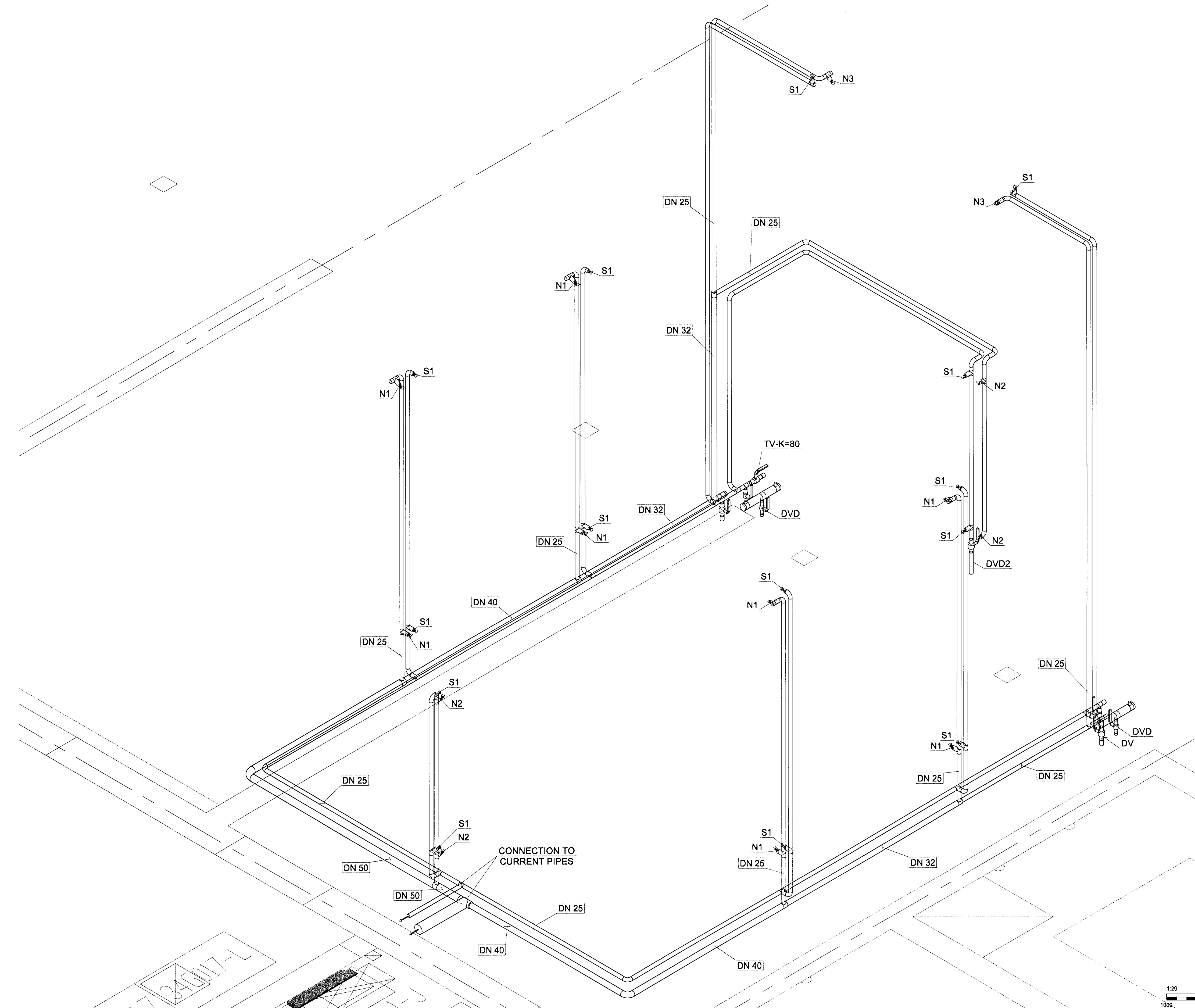


Niels Indriðason



Skýringar:  
Legend:

- S1** = Standard spray sprinkler, K=80, DN15, cromed, 14 pcs.
- N1** = Open spray nozzle, tyco D3 or compatible, K = 43, spray angle 95°, 8 pcs.
- N2** = Open spray nozzle, tyco D3 or compatible, K = 26, spray angle 95°, 4 pcs.
- N3** = Open spray nozzle, tyco D3 or compatible, K = 26, spray angle 65°, 2 pcs.

- DV** = Drain valve
- DVD** = Drain valve dry
- TV** = Test valve
- PM** = Pressure meter
- All pilot line pipes are DN 25
- All pipes are galvanized

Slag nr / Rev no	Lýsing / Description	Dagsetning / Date	Har/Ún / Des/Drw	Yfir / Ckd	Nok heim / Suppl Ref	Nok heim / ISAL Ref
2	ISSUED FOR CONSTRUCTION	2011.12.08	PB			
1	ISSUED FOR REVIEW	2011.10.24	Slp			

This drawing is the property of Rio Tinto Alcan Iceland Ltd. and handed out for personal use only. It may neither be copied nor made available to others without permission of Rio Tinto Alcan Iceland Ltd. The receiver is liable for any misuse.

Stærð: A1  
Mkv.: Scale: 1:20  
Dimensions without tolerances according to ISO 2768-1 medium.



Dagsetning / Date	2011.11.11
Hannað / Designed	Slp
Tekn / Drawn	Slp
Verktaki / Supplier	HRV
Tekn.nr.verktaka / Supplier drw.no.	IDP-411-K2-092-011
Yfir / Chkd	BJ
Hluti af / Part of:	

**IPU 410 - SUBSTATION**  
**SPRINKLER SYSTEM 14 - 40D05**  
**ISOMETRIC LAYOUT**

Flókkur nr.: Blað nr.: Nasta bl.:  
Kostn.nr.-Cena. / Búnr.-Eano

AKS

Teg.tekningar / Bwg. type: TRANSFORM BAYS

**RioTintoAlcan**

ISAL Tekn.nr. ISAL / Drw.no. of ISAL Breyt./Rev. C

ISAL Yfirfard og skrðd. dags / ISAL Checked, date ISAL Samþykkt, dags / ISAL Approval, date