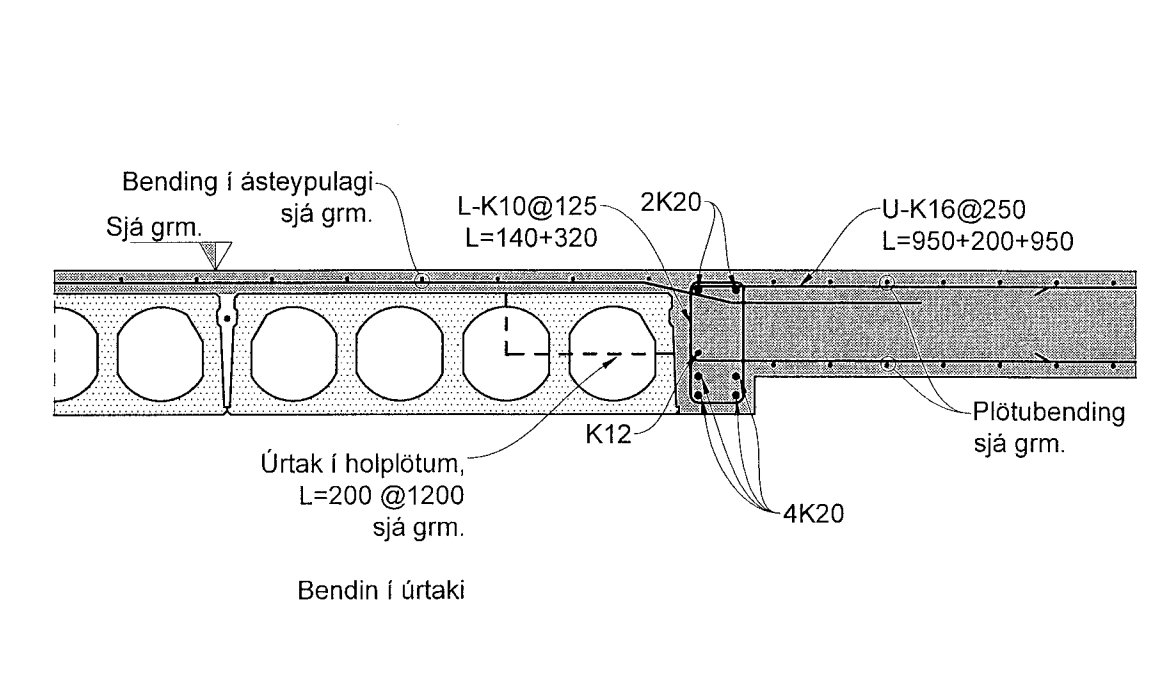
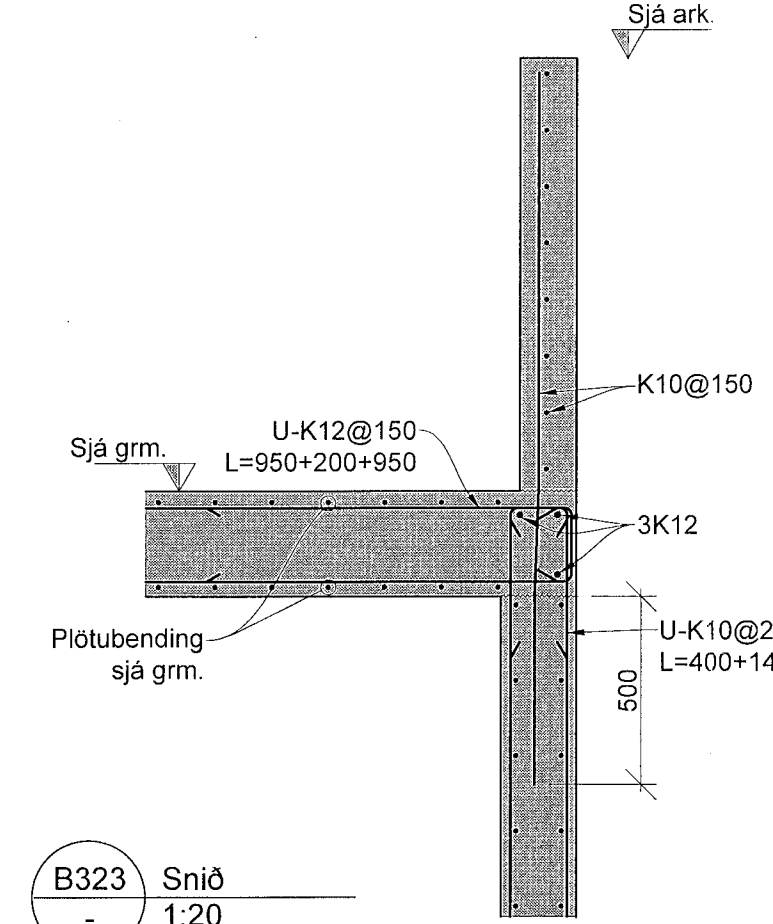


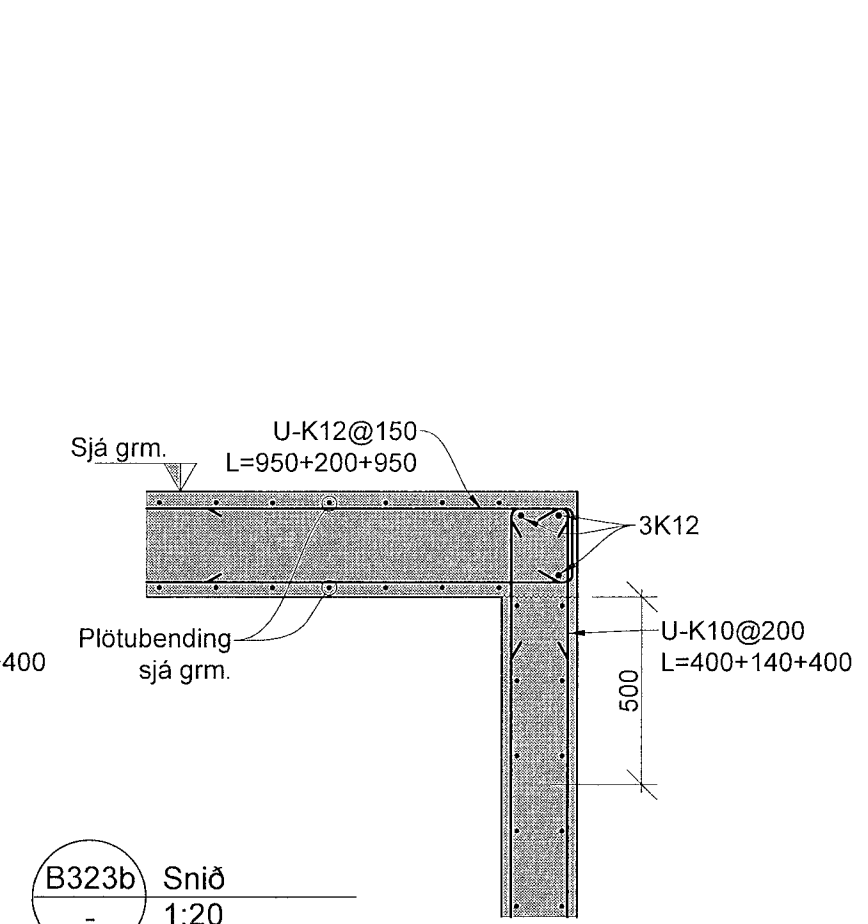
B321 Snið 1:20



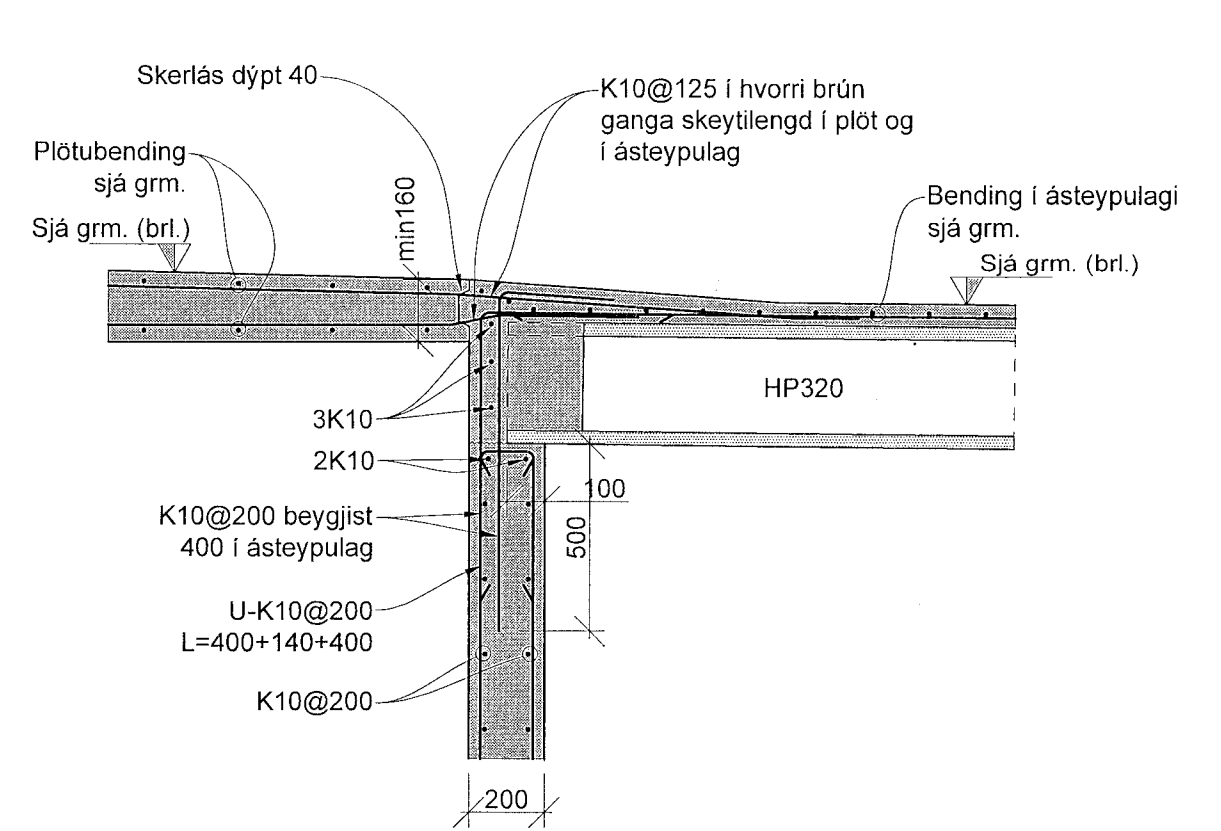
B322 Snið 1:20



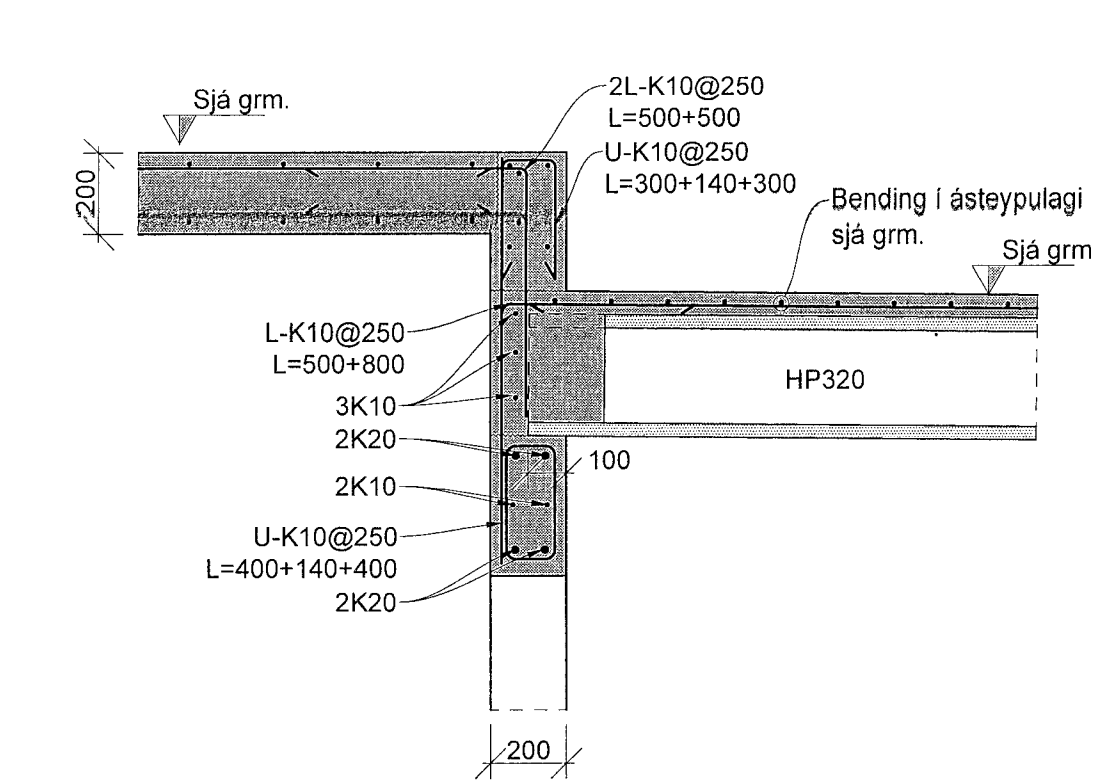
B323 Snið 1:20



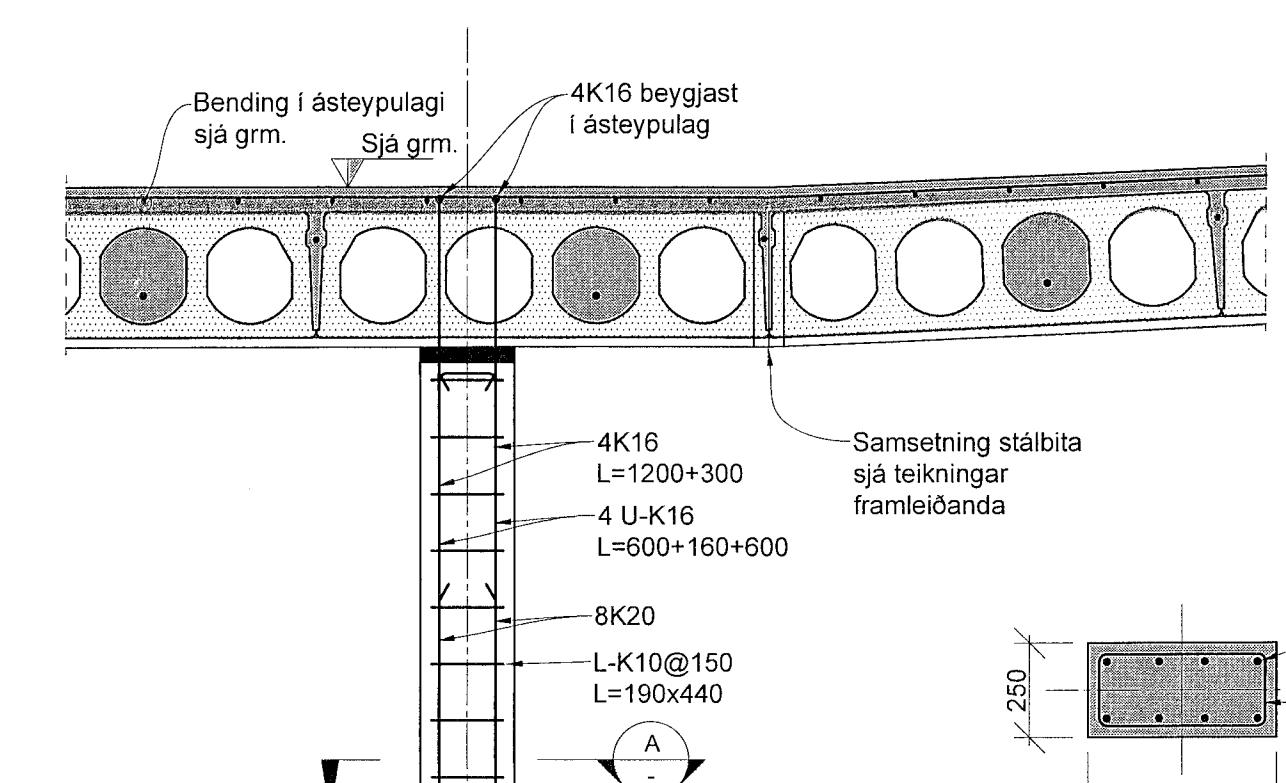
B323b Snið 1:20



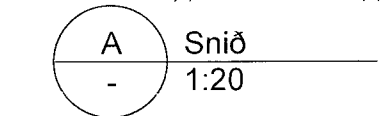
B324 Snið 1:20



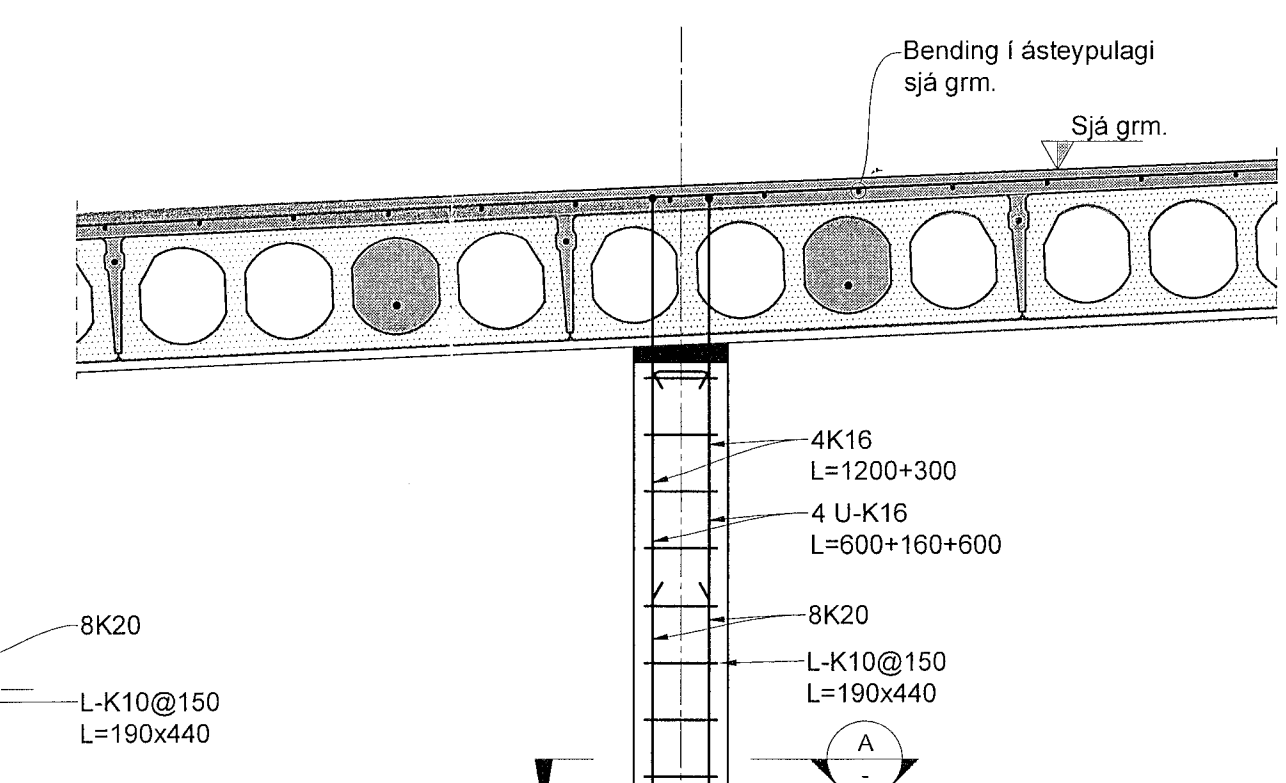
B325 Snið 1:20



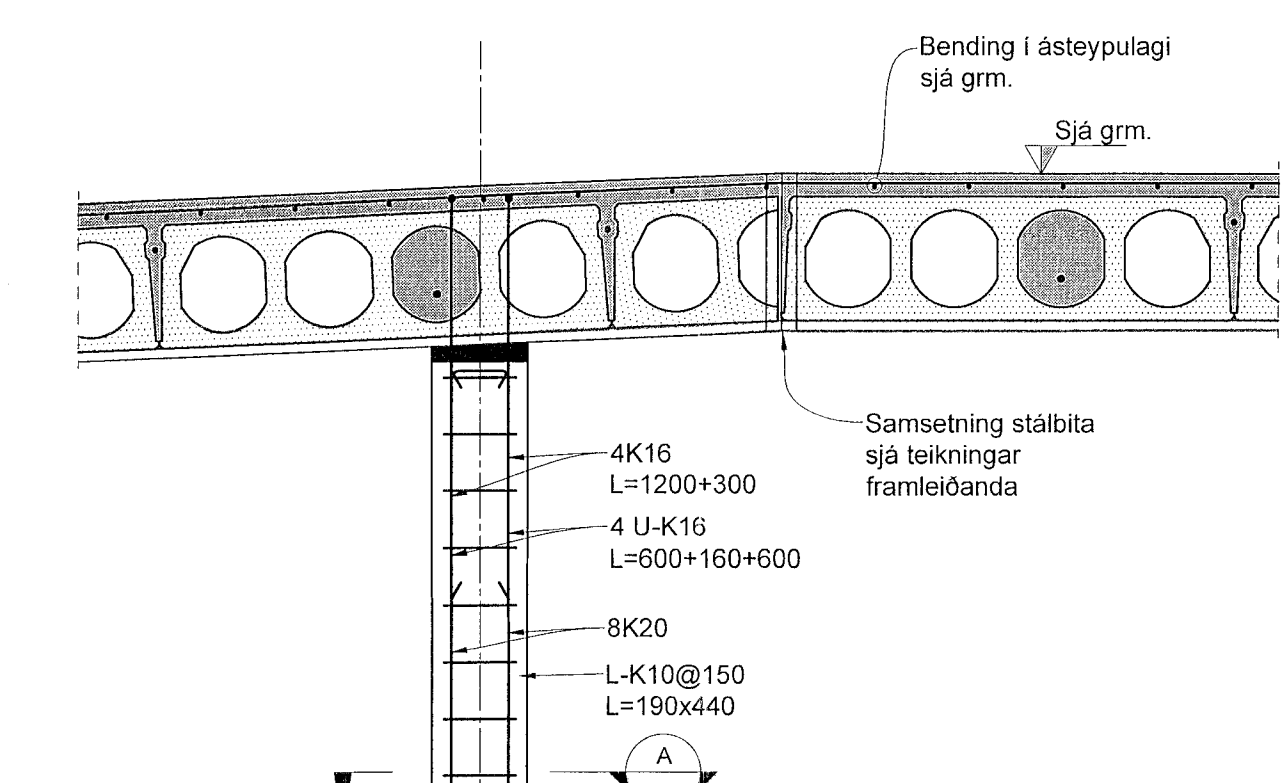
B326 Snið 1:20



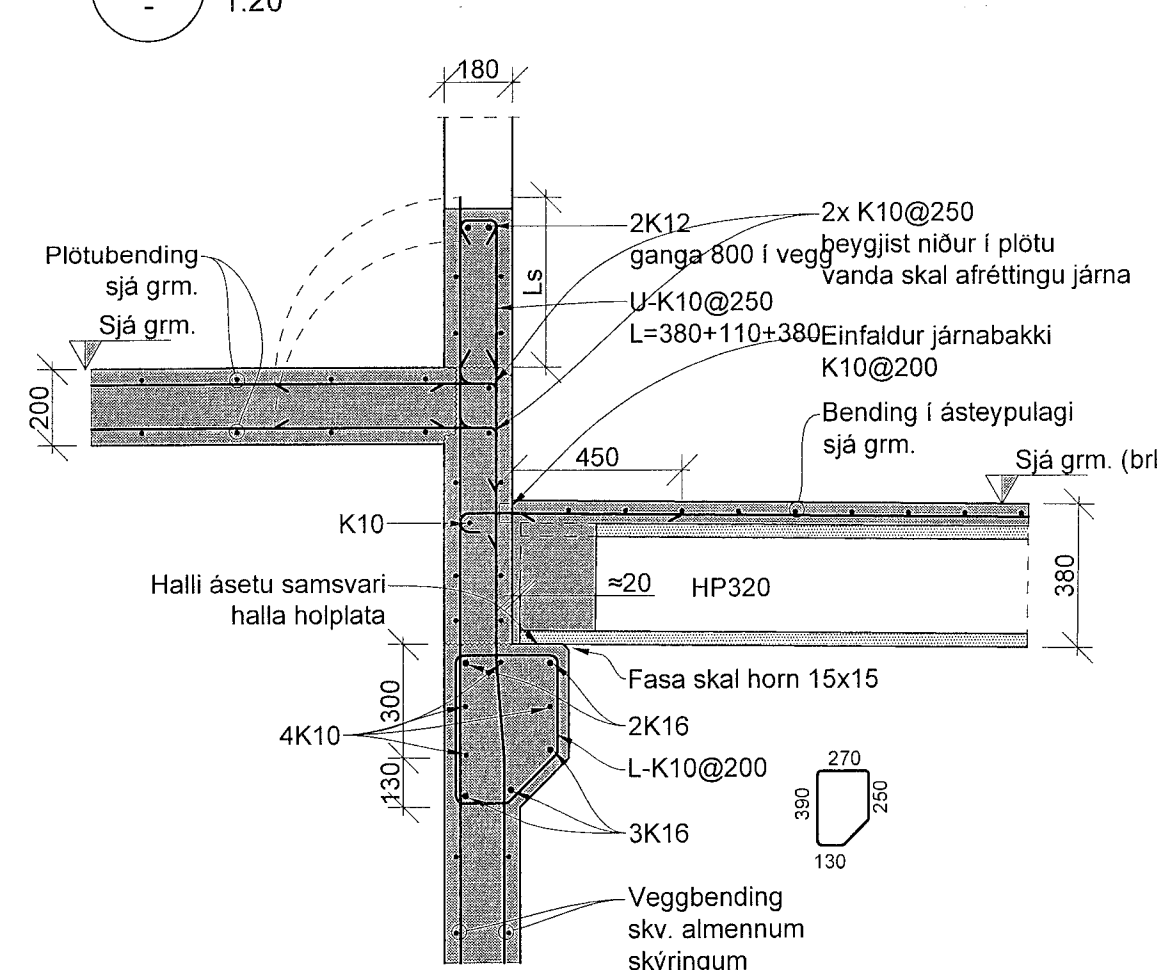
A Snið 1:20



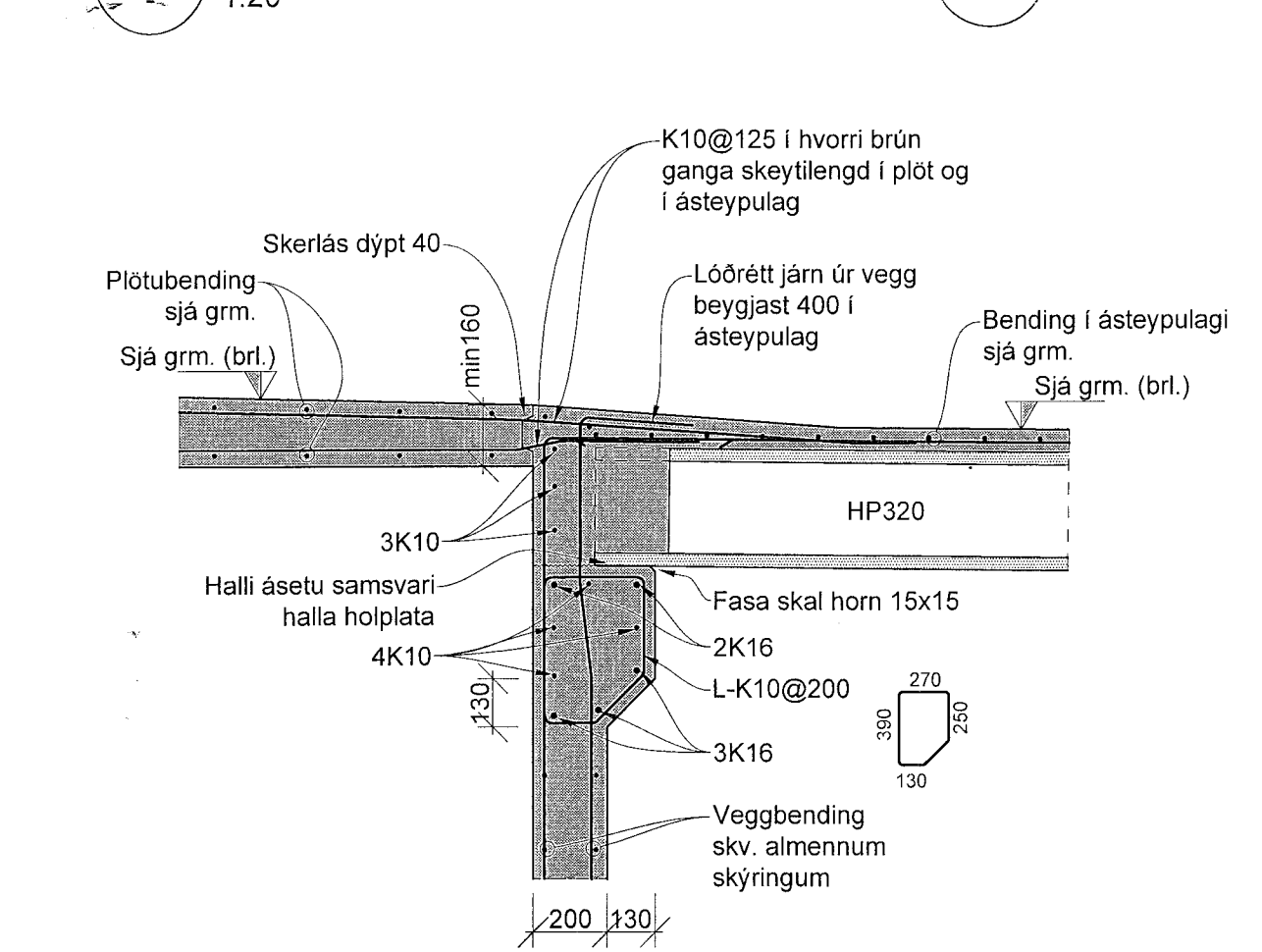
B327 Snið 1:20



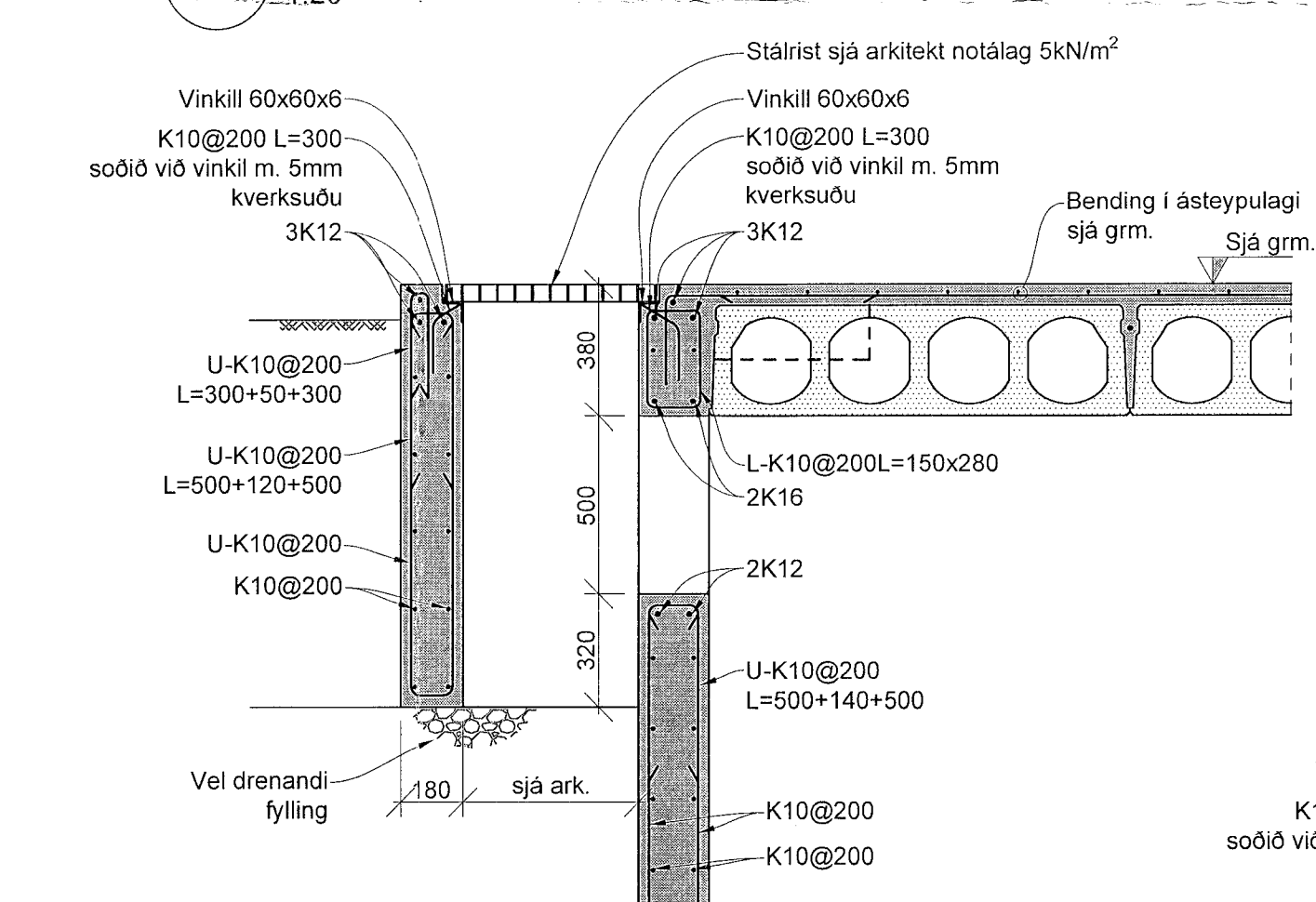
B328 Snið 1:20



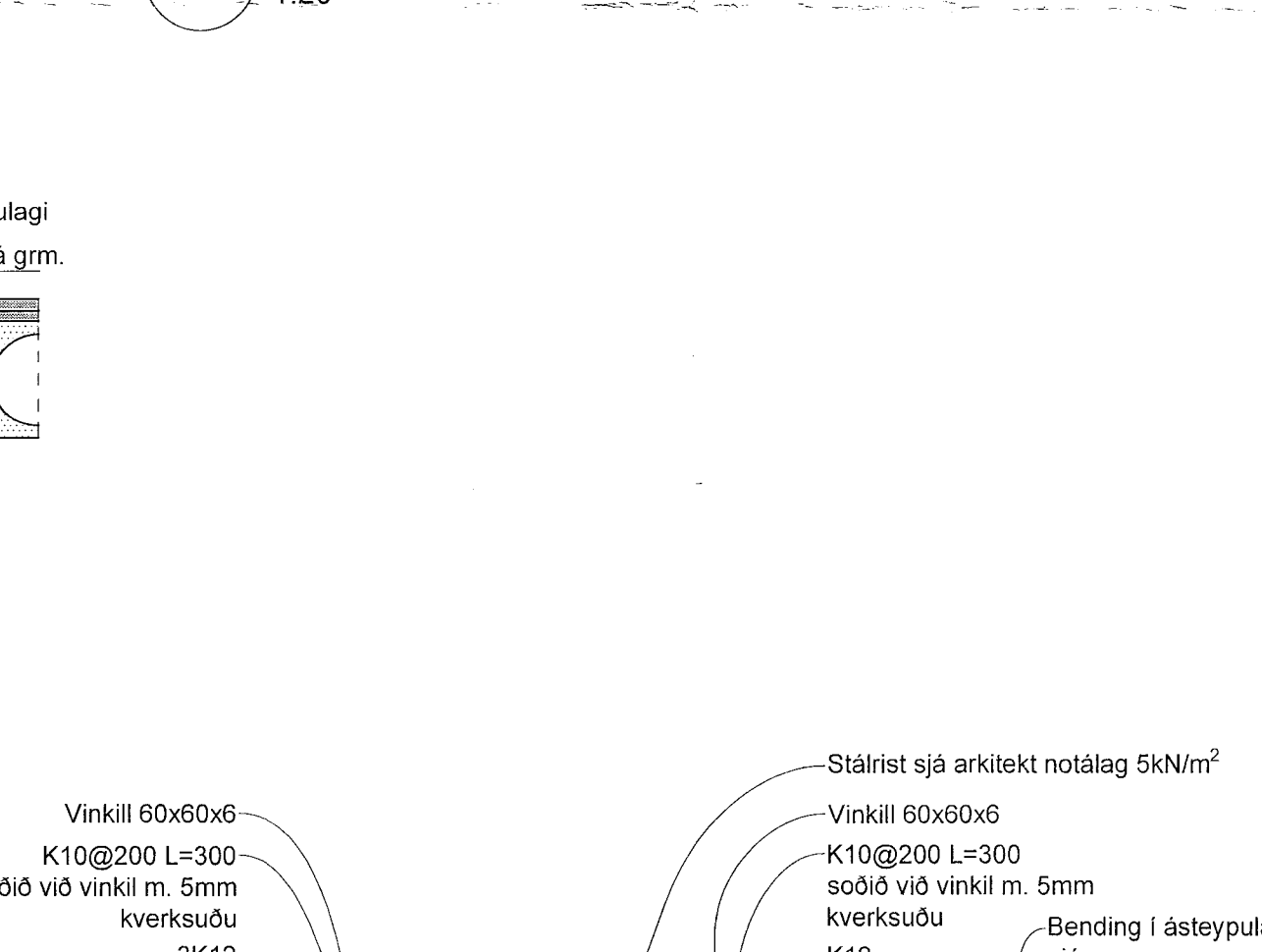
B329 Snið 1:20



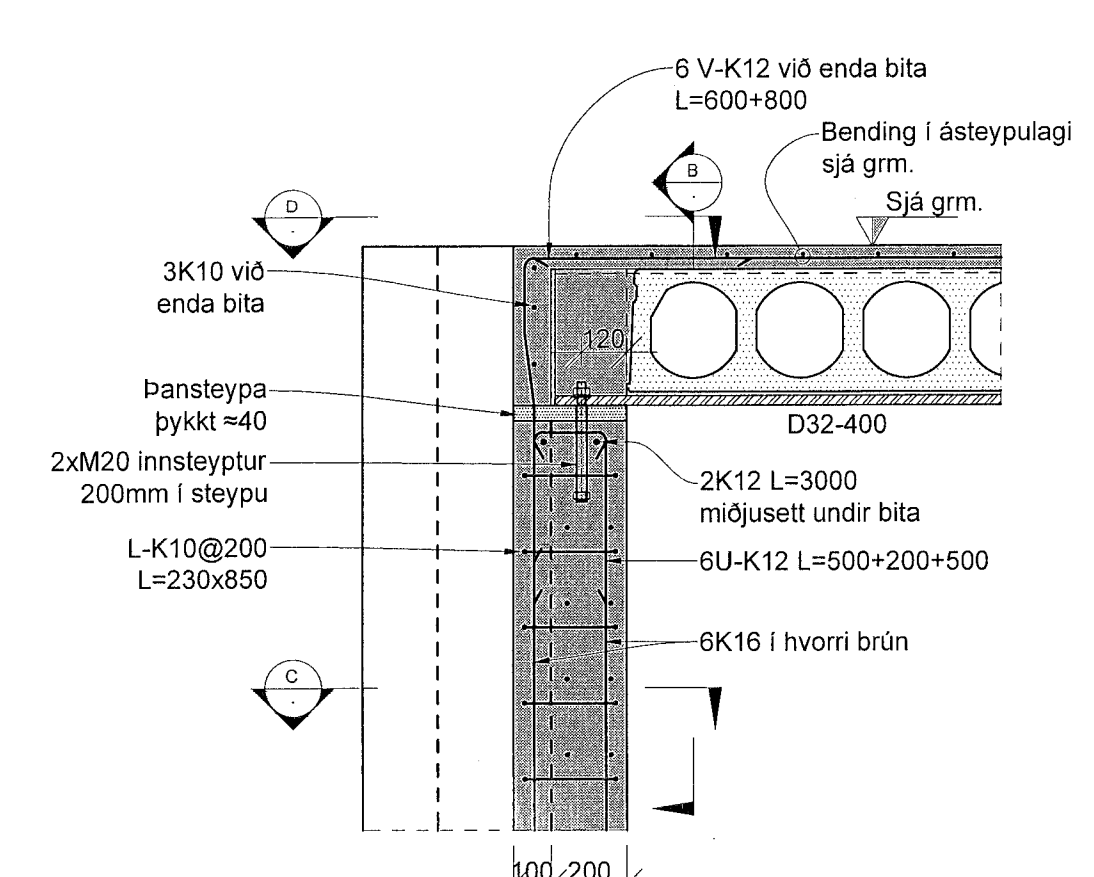
B330 Snið 1:20



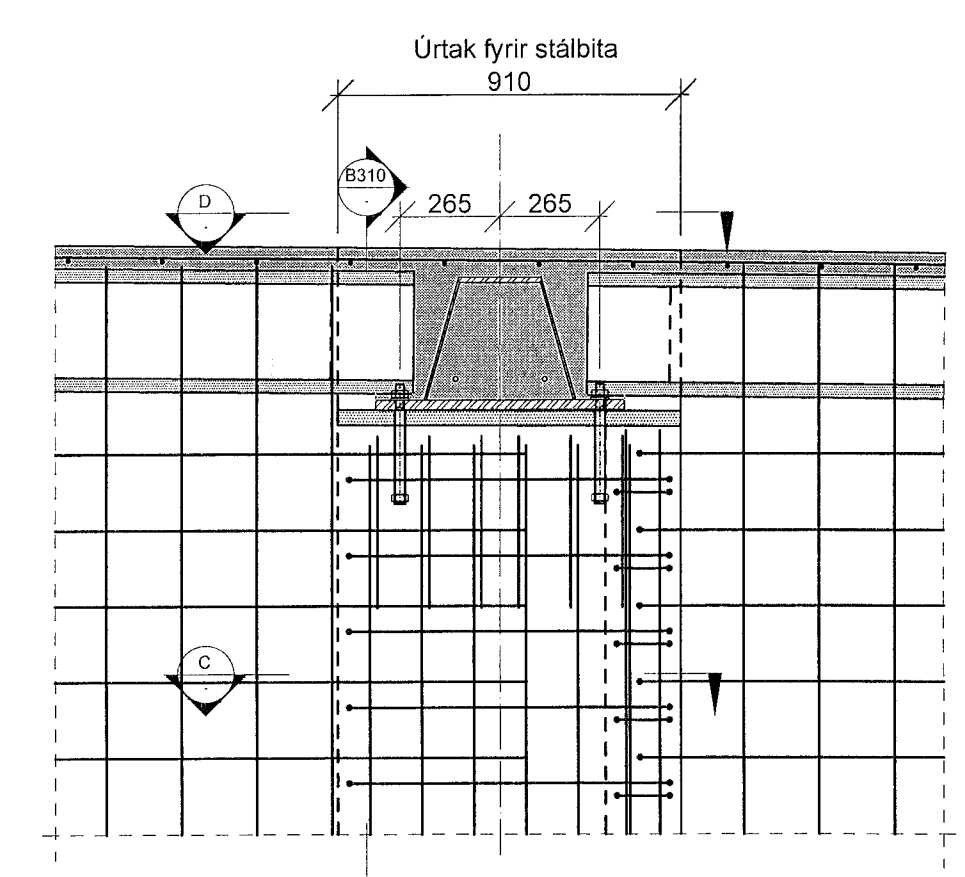
B331 Snið 1:20



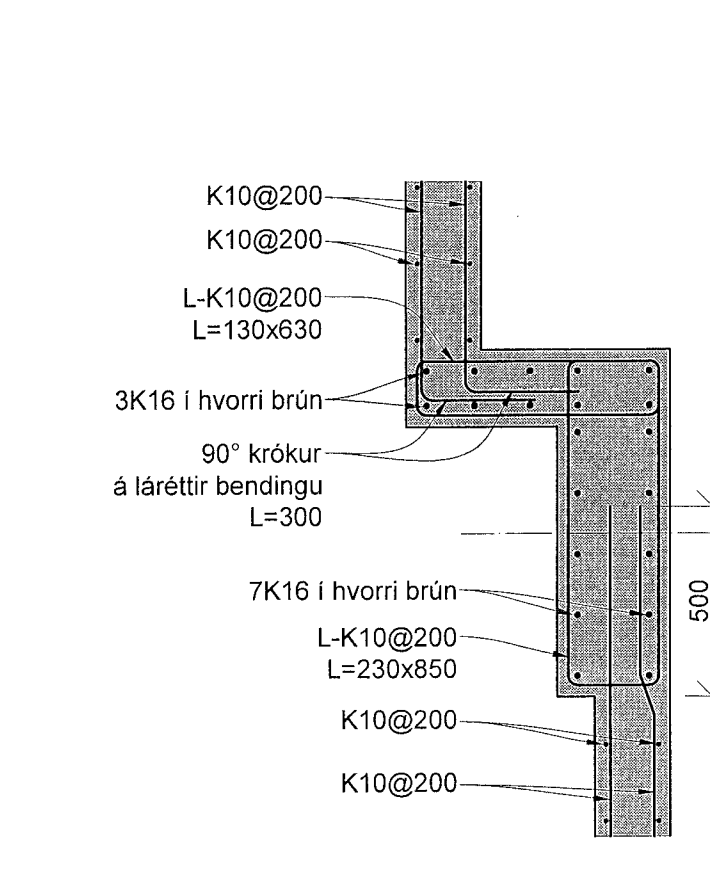
B332 Snið 1:20



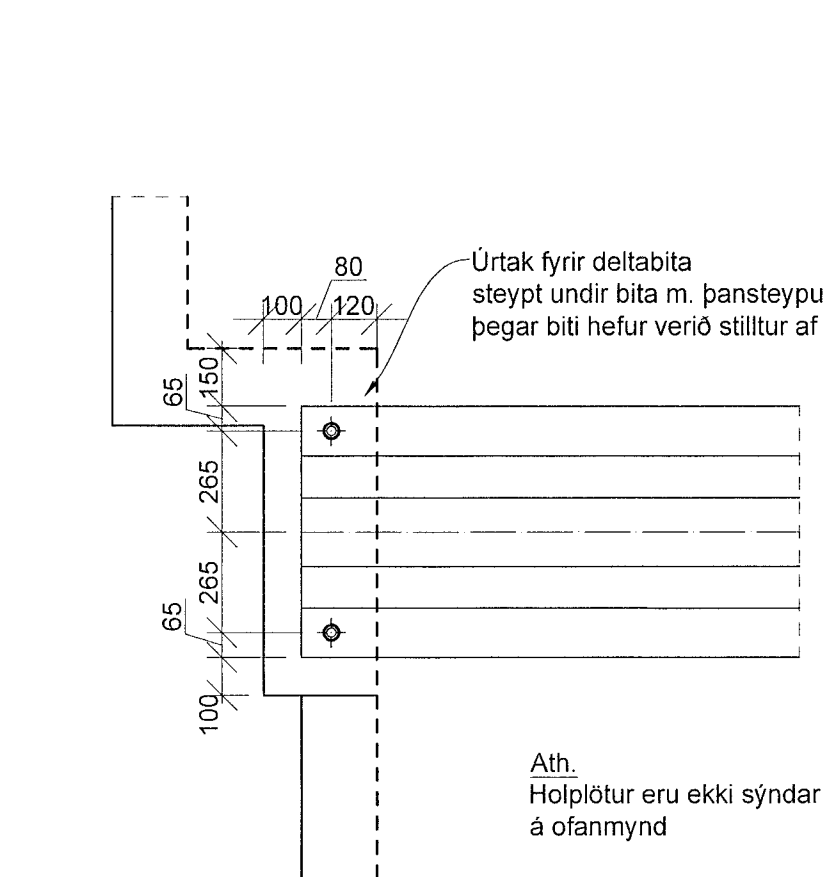
B333 Snið 1:20



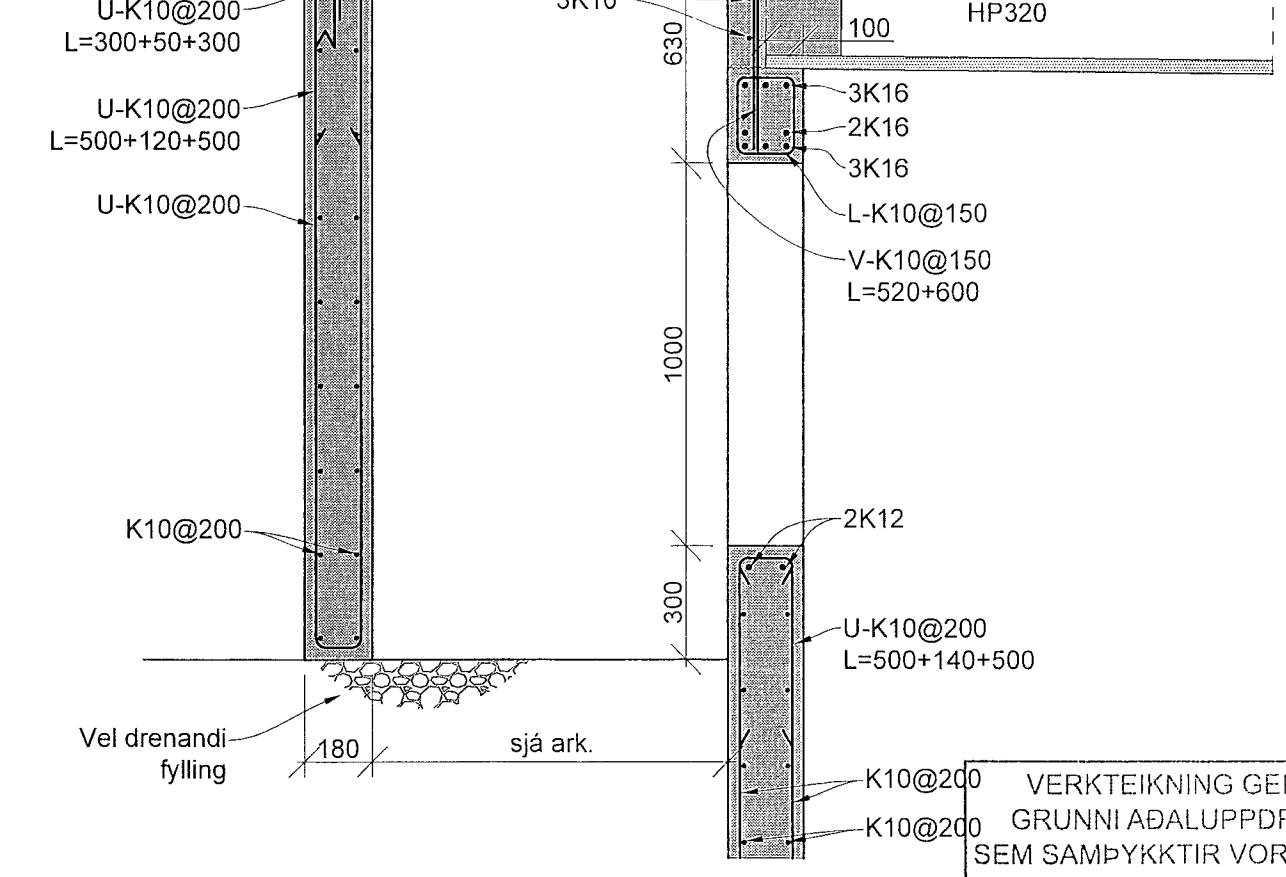
B Snið 1:20



C Snið 1:20



D Snið 1:20



B332 Snið 1:20

Skýringar

Sjá skýringar á grunnmynd

Mál og kótar koma fram á teikningum arkitekta og skal sannreyna málsetningar á burðarvirkisteikningum við þær.

Uppgefin mál á járnnum (lykkjum) skal yfirfara með tilliti til steypumálsetninga.

Tilvísanir í teikningar:

- B_A_01_01 Alm. skýringar - fors. og grundun
- B_A_01_02 Alm. skýringar - Kröfur til steinsteypu
- B_A_01_03 Alm. skýringar - Bendistál, alm. snið
- B_A_01_04 Alm. skýringar - Bendistál, alm. snið

Skamstafanir:

- tv - Þykkt veggjar (sýnt á grumynd)
- tb - Þykkt bita (sýnt á grumynd)
- tp - Þykkt plötu (sýnt á grumynd)
- Ls - Skeytilengd (skilgreint á skýringarbláði)
- bb - í baðum brúnum



Áshamar 12-26

Fjölbýlishús
221 Hafnarfjörður

Burðarvirki
Plata og veggir við bilakjallara
Snið og deili

TEKNIÐ	BLAÐSTÆÐ	HANNAÐ	KSG
21-133	A1	TEKNAÐ	KSG
B_S_22_03		YFRIFAR	JF
DAGS	MÆLIKVARÐI	ÚTGÁFA	
19.06.2023	1:20		A

Dagsetning aðaluppdráttar:
Höfundur: Jóhann Friðriksson kt. 160777-4438
Höfundarás: 17

VERKEIÐNING GERÐ Á
GRUNNI AÐALUPPDRATTA
SEM SAMÞYKKTIR VORU ÞANN:
14 DEC 2022
Ásger Ásgerðsson • kt. 060191-9429