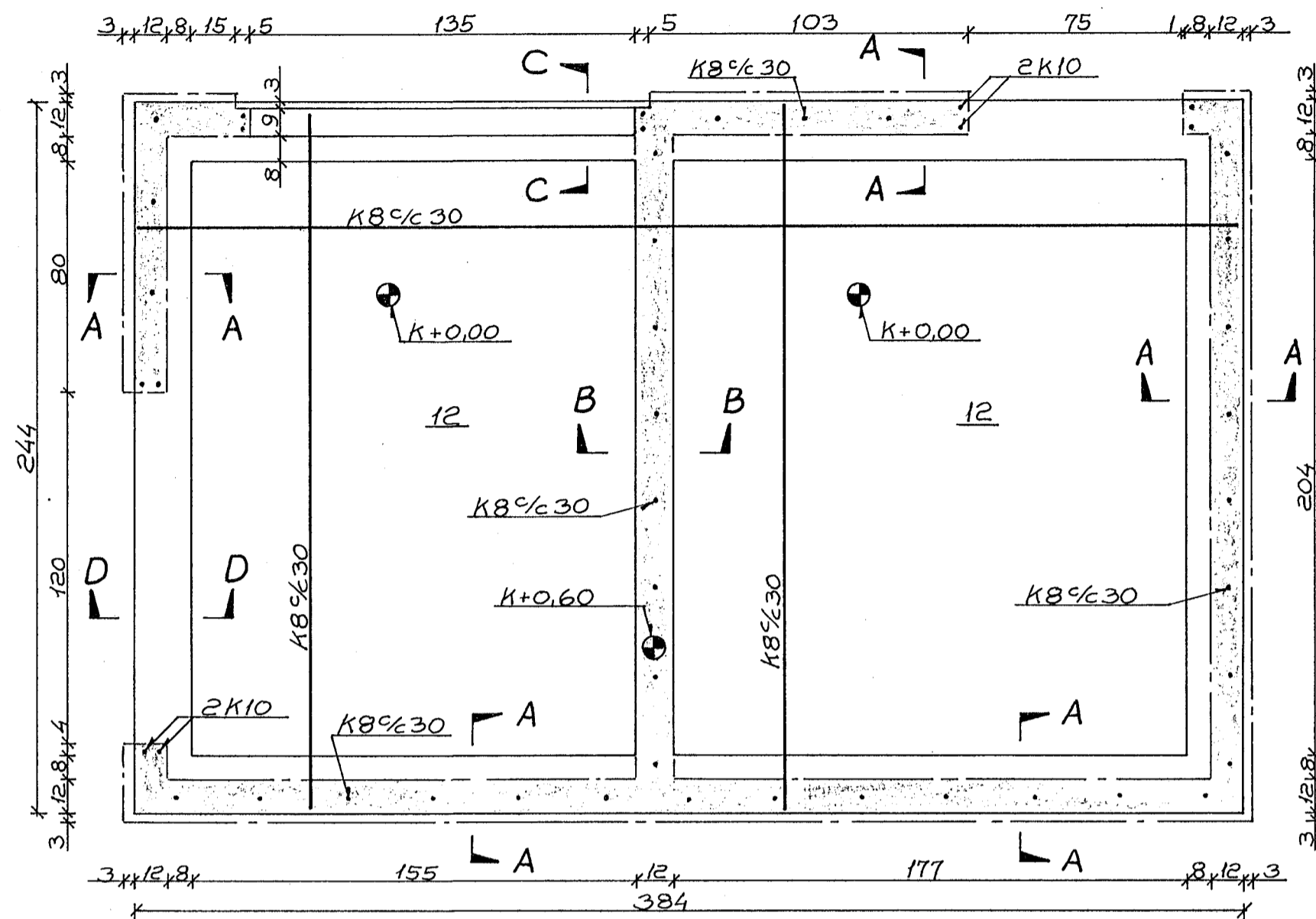
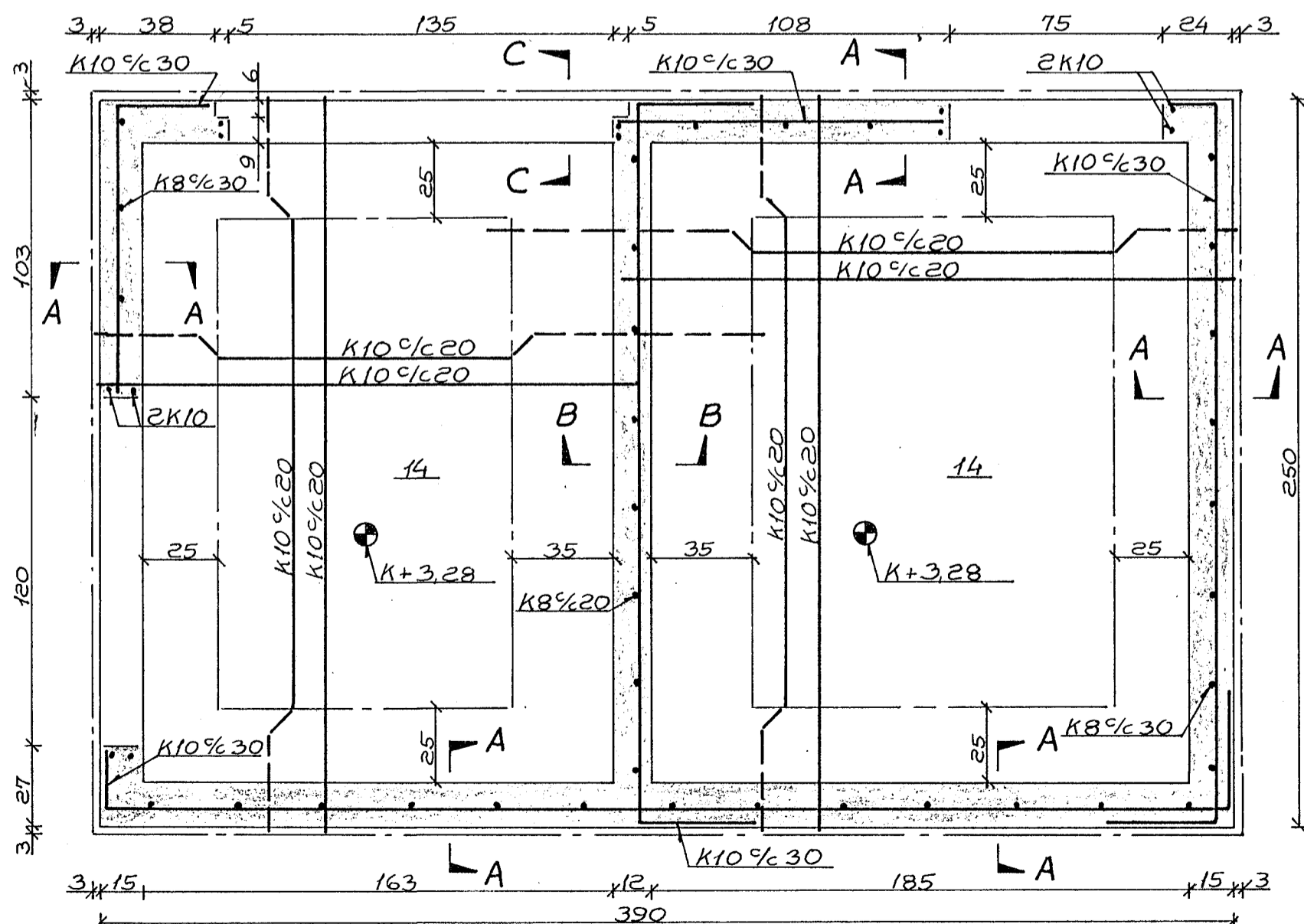


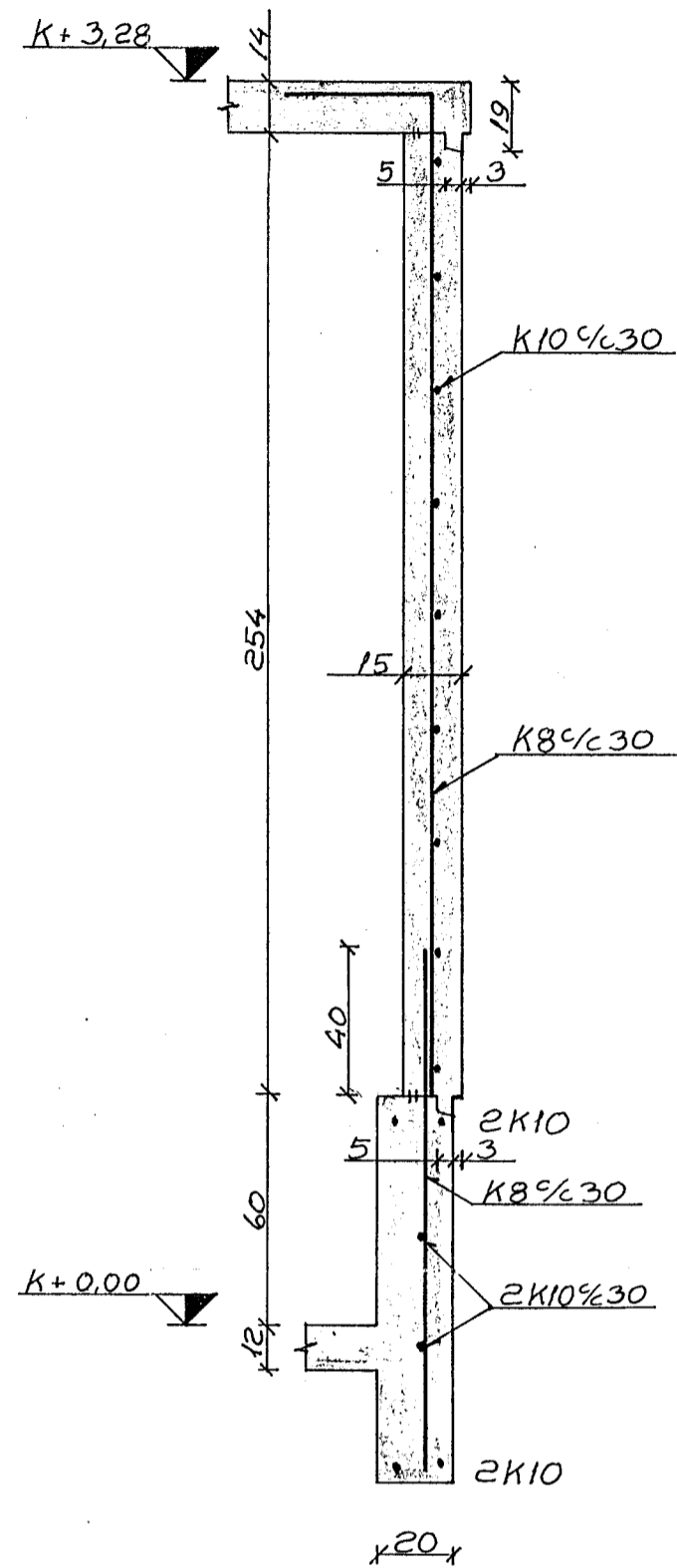
Undirstöður, grunnmynd. M.1:20



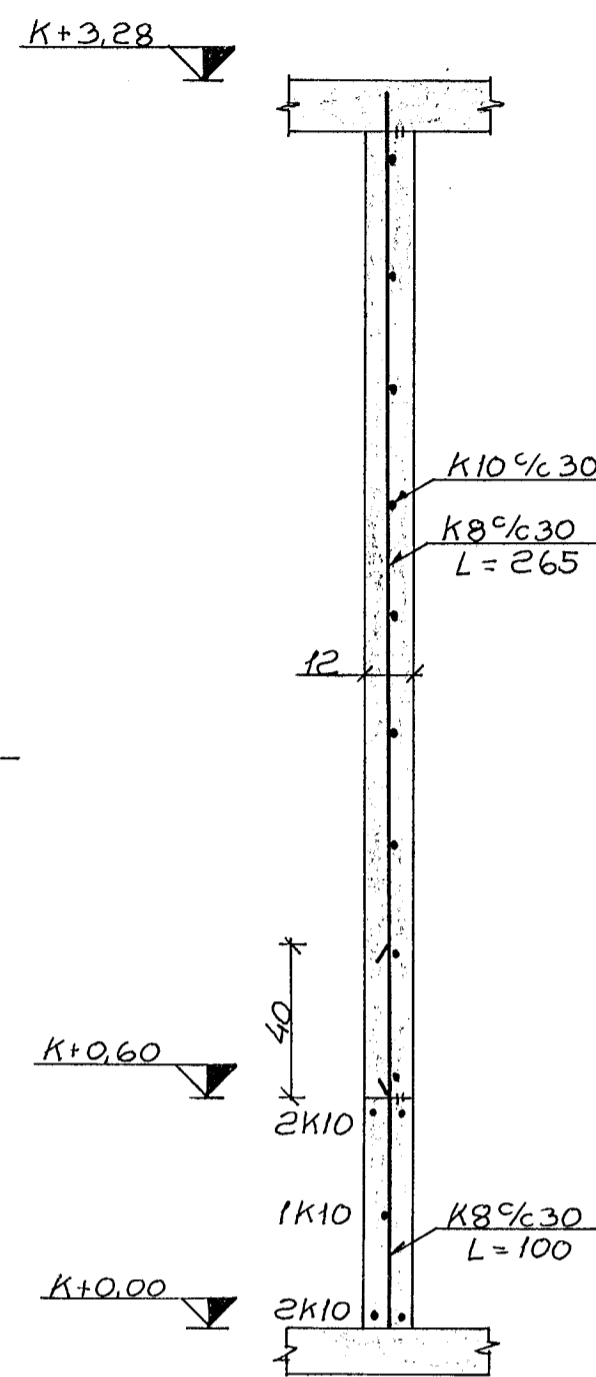
Þakplata M.1:20



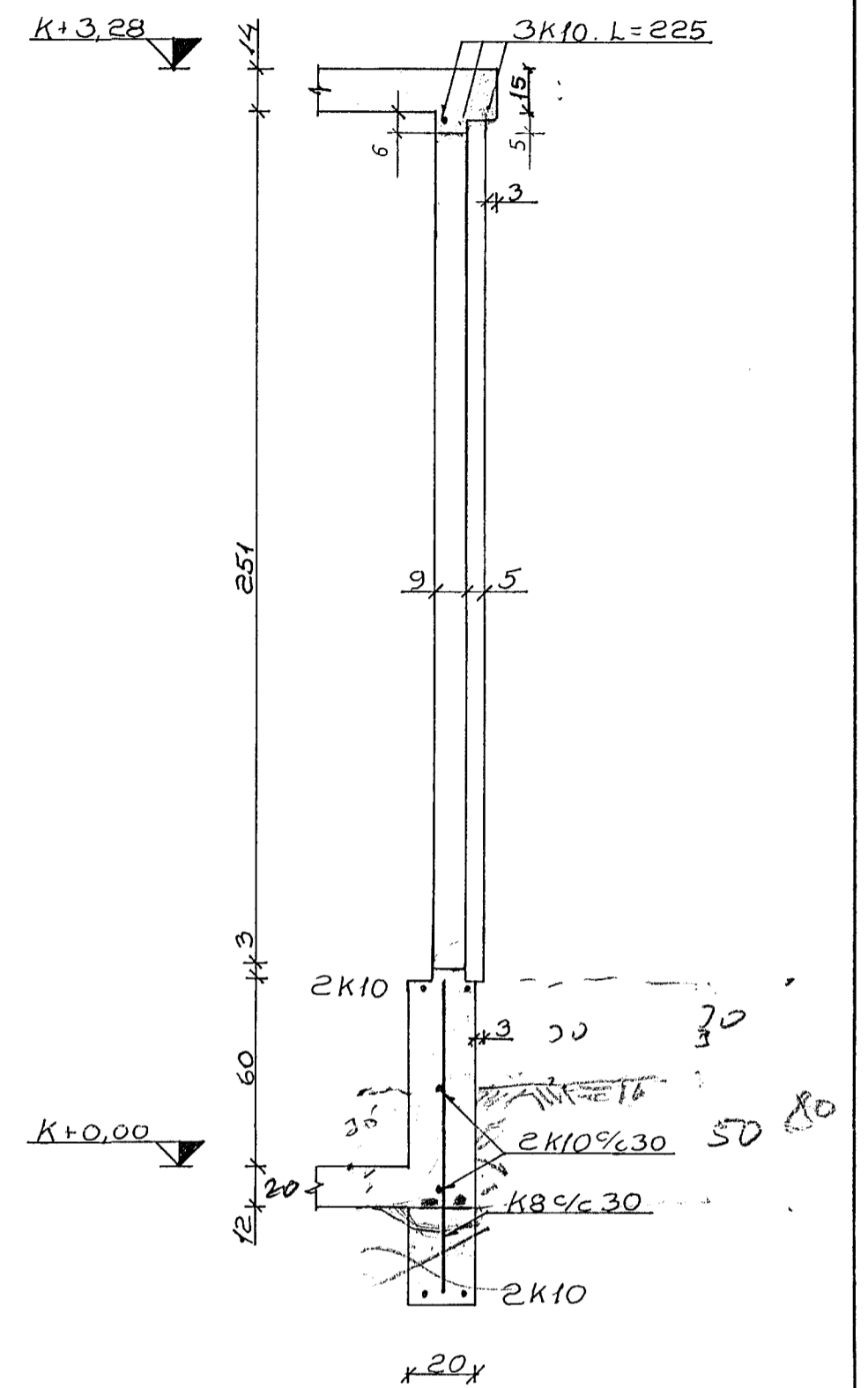
Snið A-A M.1:20



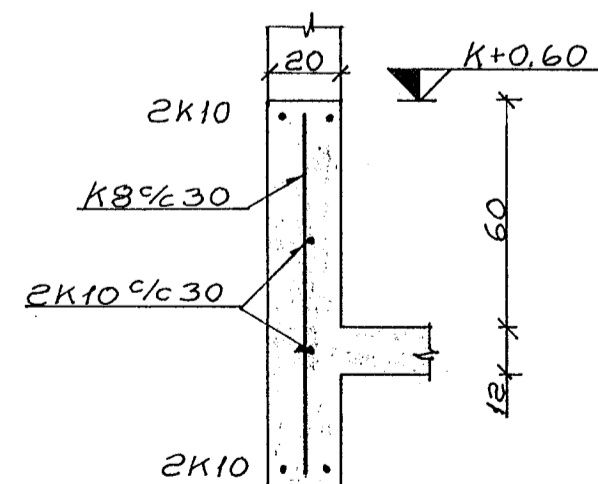
Snið B-B M.1:20



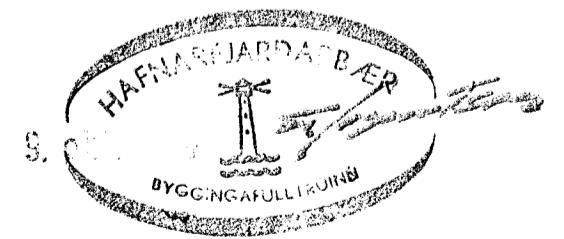
Snið C-C M.1:20



Snið D-D M.1:20



K.merkir kambstól KS40
 Steypustyrkleiki: K200 í veggjum og undirstöðum en K250 í plötum.
 Í kring um múrop skal leggja, nema annars sé getið, 2K10 og skulu þau ná minnst 40 cm út fyrir opin.
 Järnapvermál er í m.m, kótar í m. Önnur mál eru cm.



Selluhraun 166

Rafveita Hafnarfjarðar.	
Mkv. 1:20	Dreifistöð.
Teikn. F.J.	Järnolögn.
15 sept 1971	Nr. 12.271
Blað 1 of 1	Freyr Jóhannesson tæknifr. M.T.F.I.