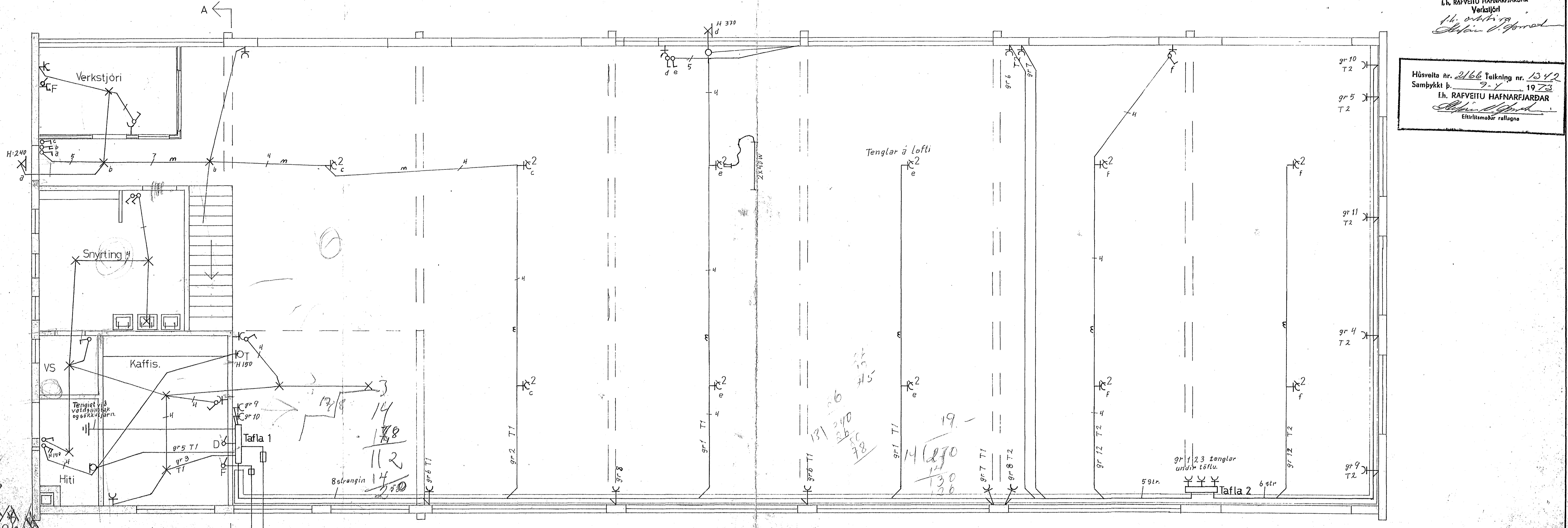
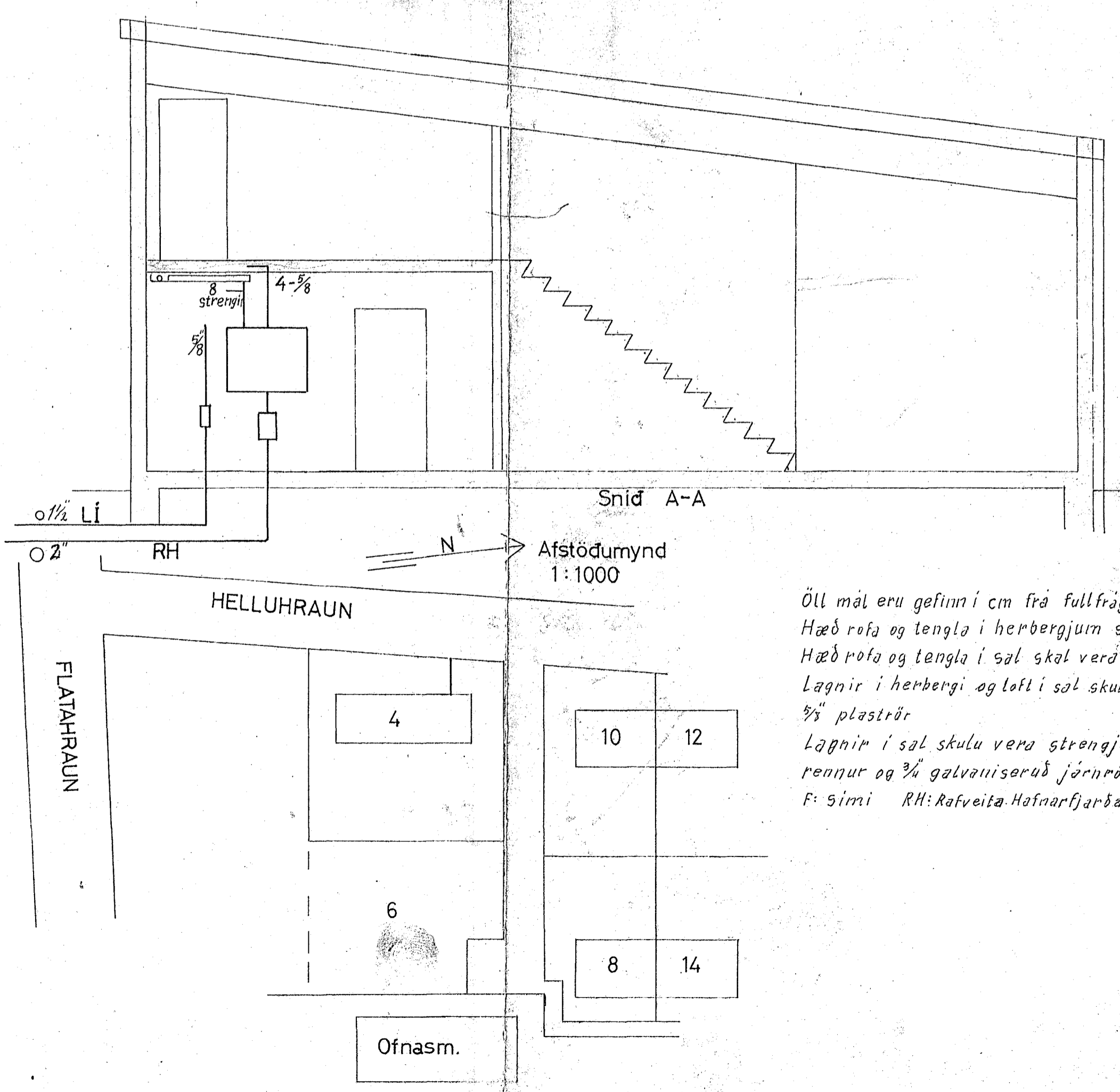
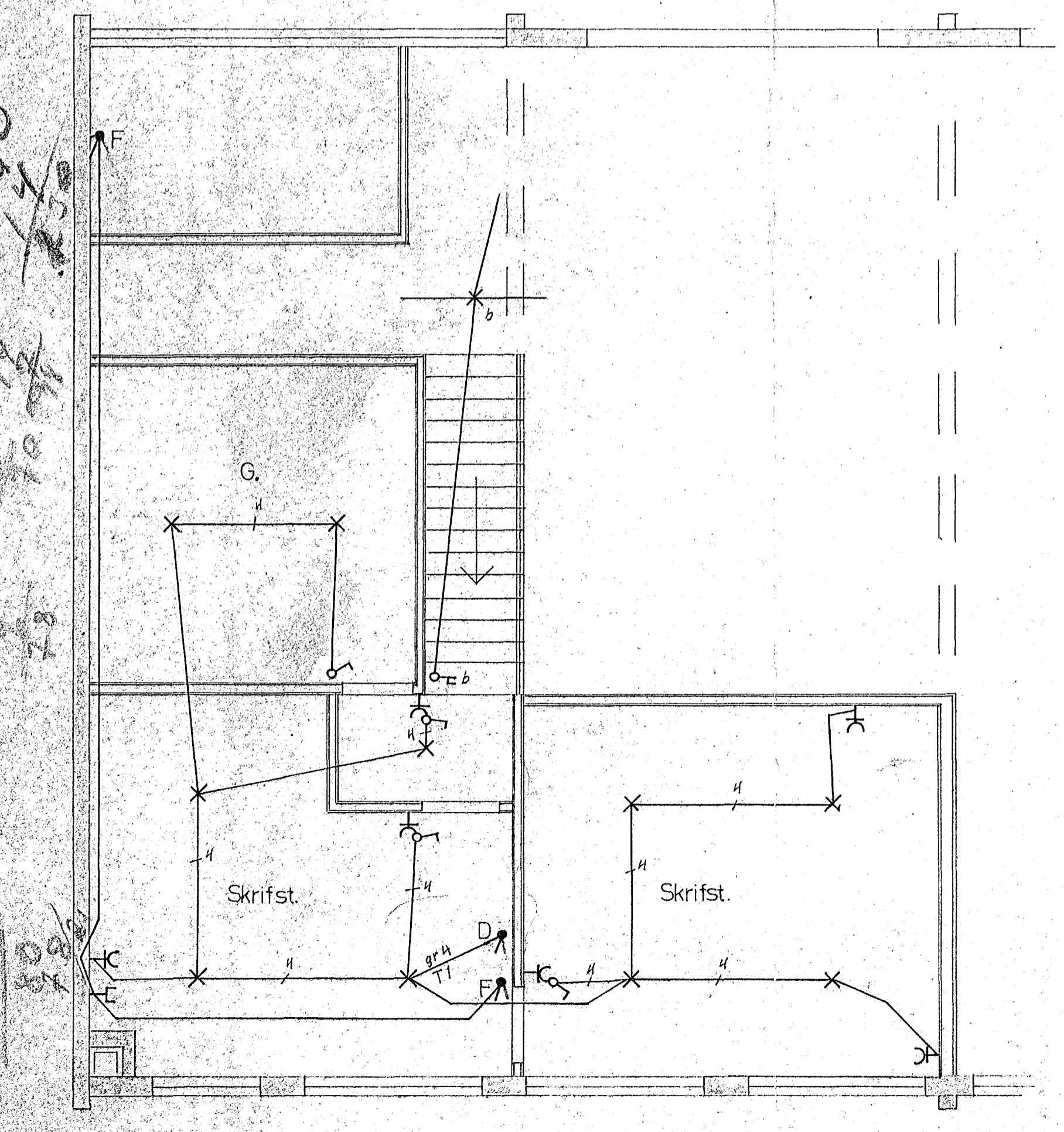


Inntök samþykkt 9/14 1973
f.h. RAFVEITU HAFNARFJARÐAR
Verksjón
H. Þ. Þ. Þ. Þ. Þ.

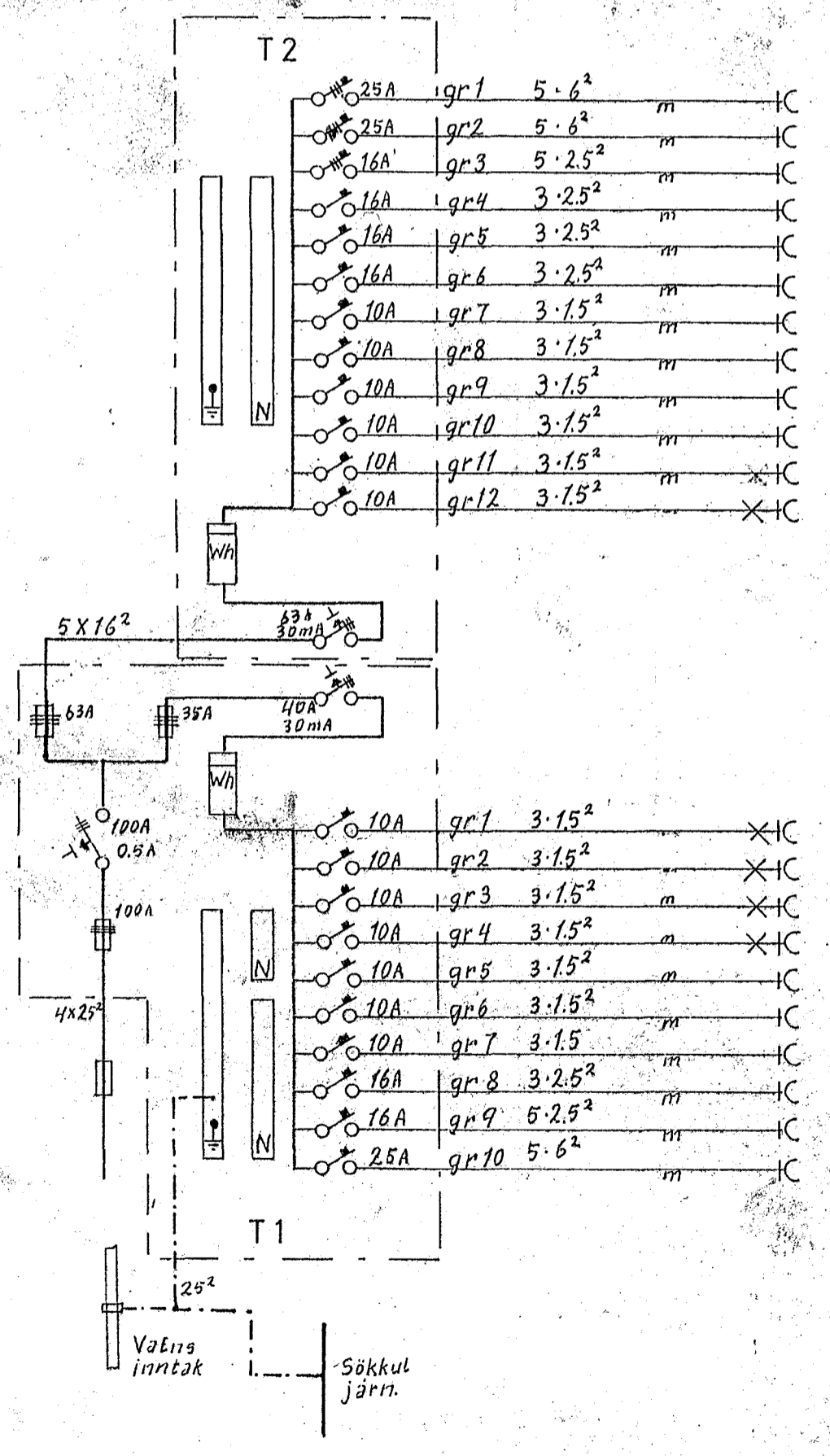
Húsvéita nr. 2166 Tækning nr. 1342
Samþykkt þ. 9-1 1973
f.h. RAFVEITU HAFNARFJARÐAR
Elielín Þ. Þ. Þ.
Elielín Þ. Þ. Þ.



Handwritten notes on the left margin:
13/240
08/14
13/270
13/280
13/290
13/300
13/310
13/320
13/330
13/340
13/350
13/360
13/370
13/380
13/390
13/400
13/410
13/420
13/430
13/440
13/450
13/460
13/470
13/480
13/490
13/500
13/510
13/520
13/530
13/540
13/550
13/560
13/570
13/580
13/590
13/600



Öll mál eru gefin í cm frá fullfrágöngu gófi.
Hæð rofa og tengla í herbergjum skal vera 100 cm
Hæð rofa og tengla í sal skal vera 120 cm
Lagnir í herbergi og lofti sal skulu vera hulinn
 $\frac{3}{4}$ plaströr
Lagnir í sal skulu vera strengjalagnir lagðar í
rennur og $\frac{3}{4}$ galvaniserað jöfnrör að rofum og tenglum.
F: Simi RH: Rafveita Hafnarfjarðar.



Breytingar	Nr	Dags	Af	Nafn

HELLUHRÁUN 4
Raflögn

Húsi nr. 2166
M 1:50 1:1000
Nr. B1 Efn.
Dags. 13/240
13/270
13/280
13/290
13/300
13/310
13/320
13/330
13/340
13/350
13/360
13/370
13/380
13/390
13/400
13/410
13/420
13/430
13/440
13/450
13/460
13/470
13/480
13/490
13/500
13/510
13/520
13/530
13/540
13/550
13/560
13/570
13/580
13/590
13/600