

# Hús við Melabraut

Járnþent steinsteypa

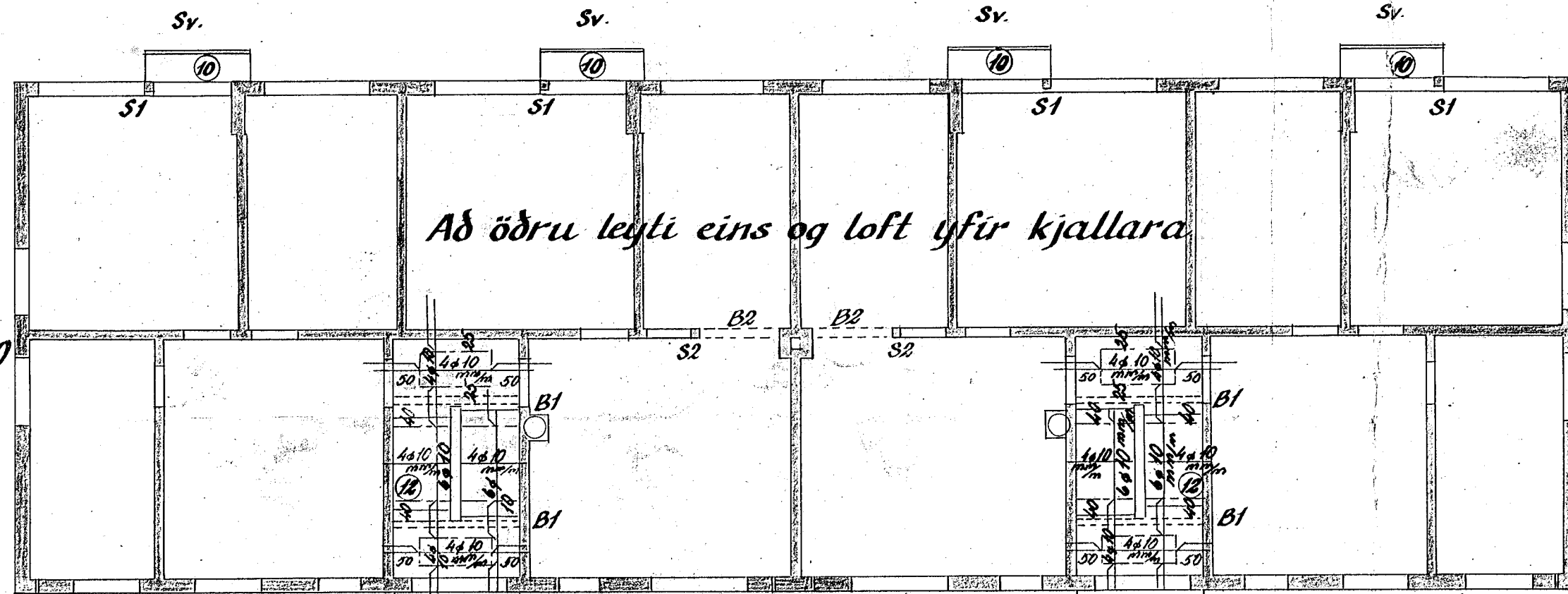
Styrkleiki steypu:  $\sigma_{\text{ROR } 28} \geq 160 \text{ kg/cm}^2$

Styrkleiki steypustyrklarjárns:  $\sigma_{\text{ROR}} \geq 4200 \text{ kg/cm}^2$

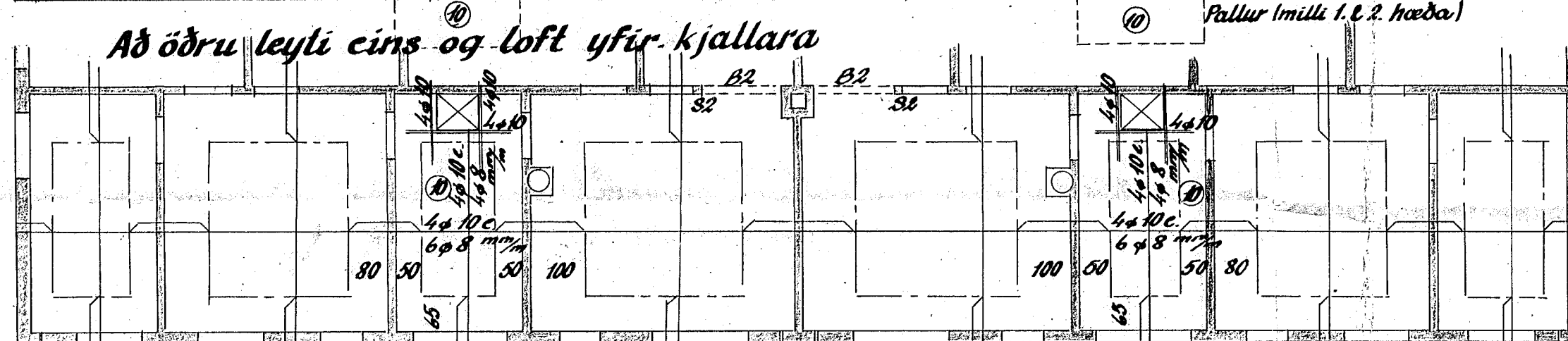
Notþungi  $200 \text{ kg/m}^2$ , nema í stígum  $300 \text{ kg/m}^2$

Yfir dyr og glugga komi  $2\phi 10$ , nema haf  $\geq 2,0 \text{ m}$ , þá komi  $4\phi 10$

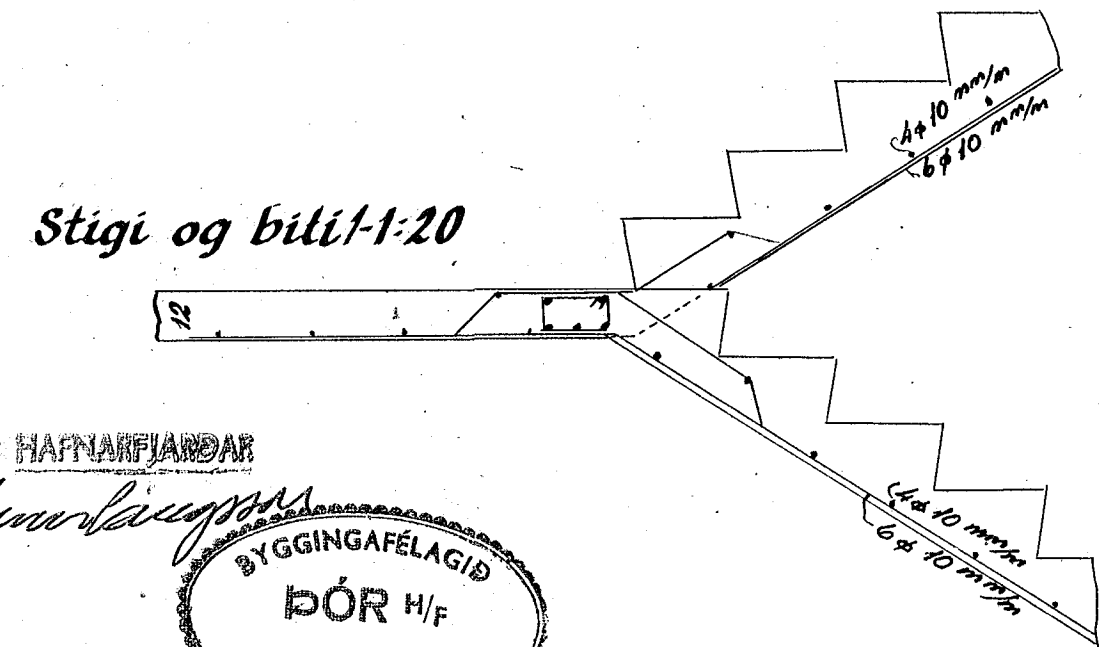
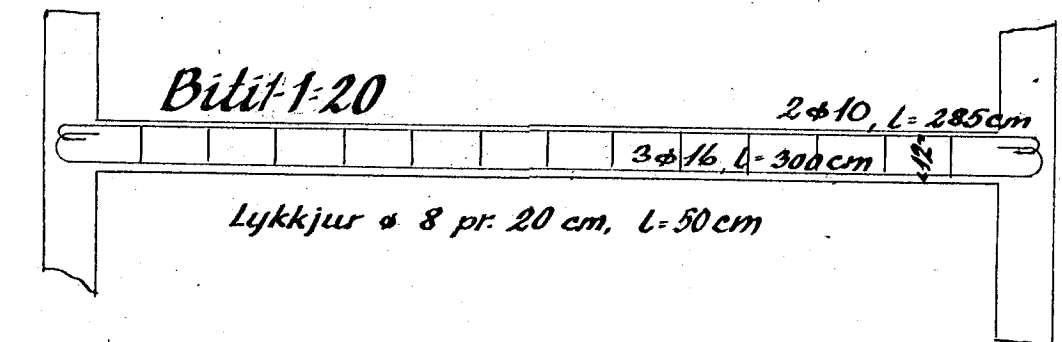
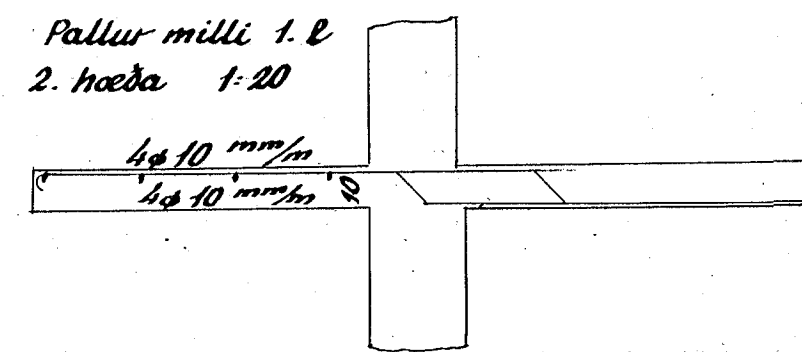
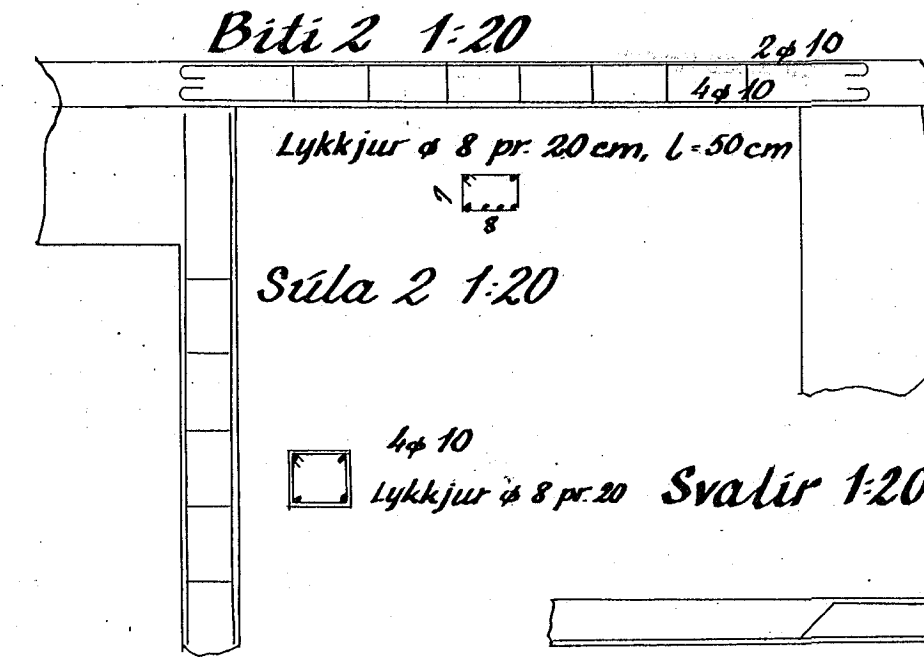
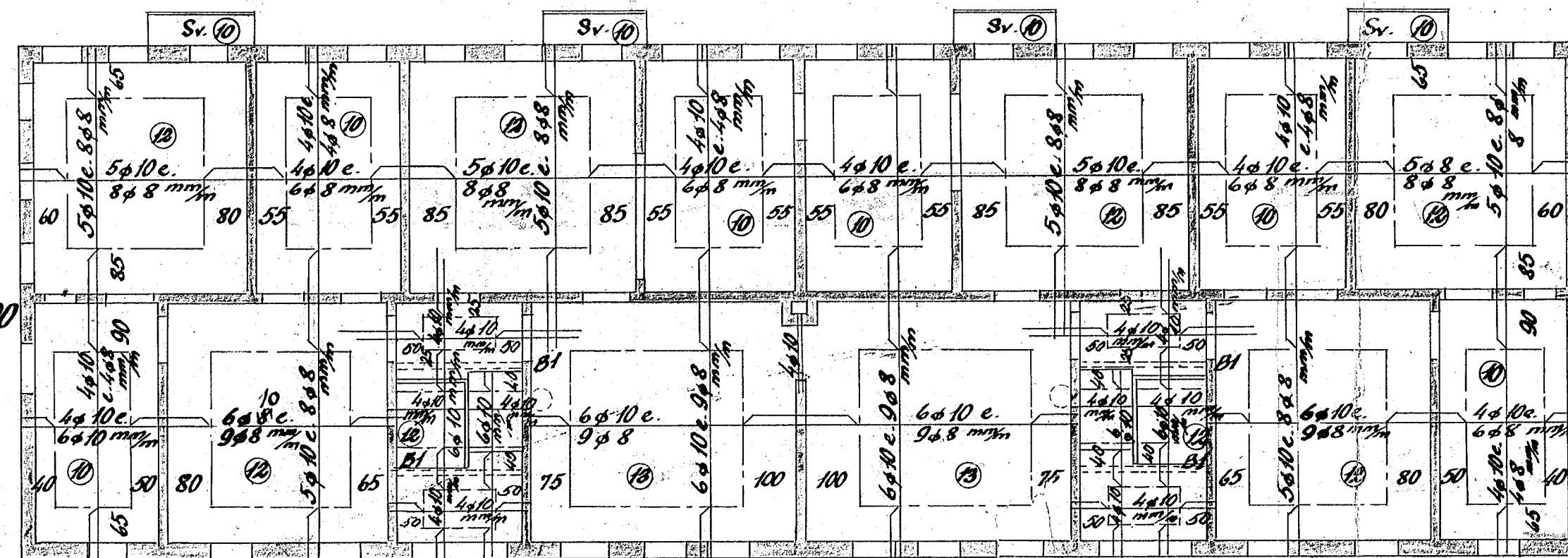
Loft yfir  
1.-2. hæð 1:100



Loft yfir 3.  
hæð 1:100



Loft yfir  
kjallara 1:100



LA. PÉTERSJÓHN HAFNARFIKJÓR

*Stefán Gunnlaugsson*



*Þórunn Þorsteinsson*

*Þórunn Þorsteinsson*  
*Virgínia Sigurðardóttir*

Hafnarfirði í sept. '54

Súlabraut 10-12

S.P.O.