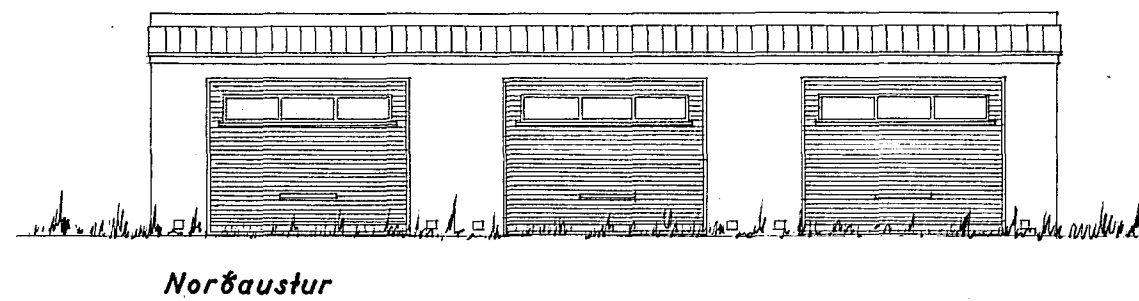


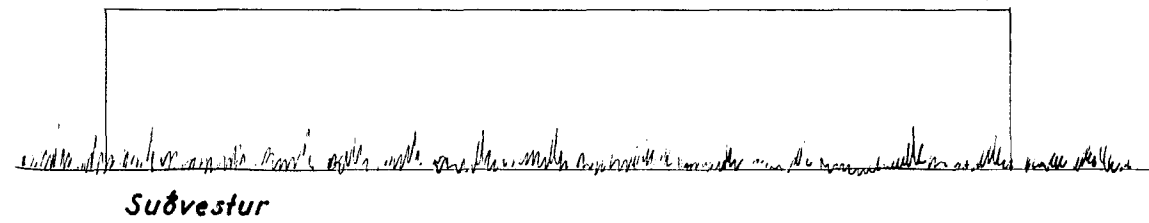
Melabraut nr. 7.

Bilgeymslur

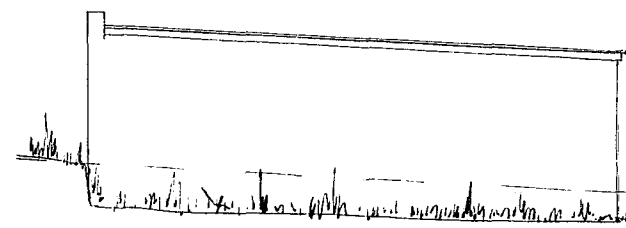
1:100



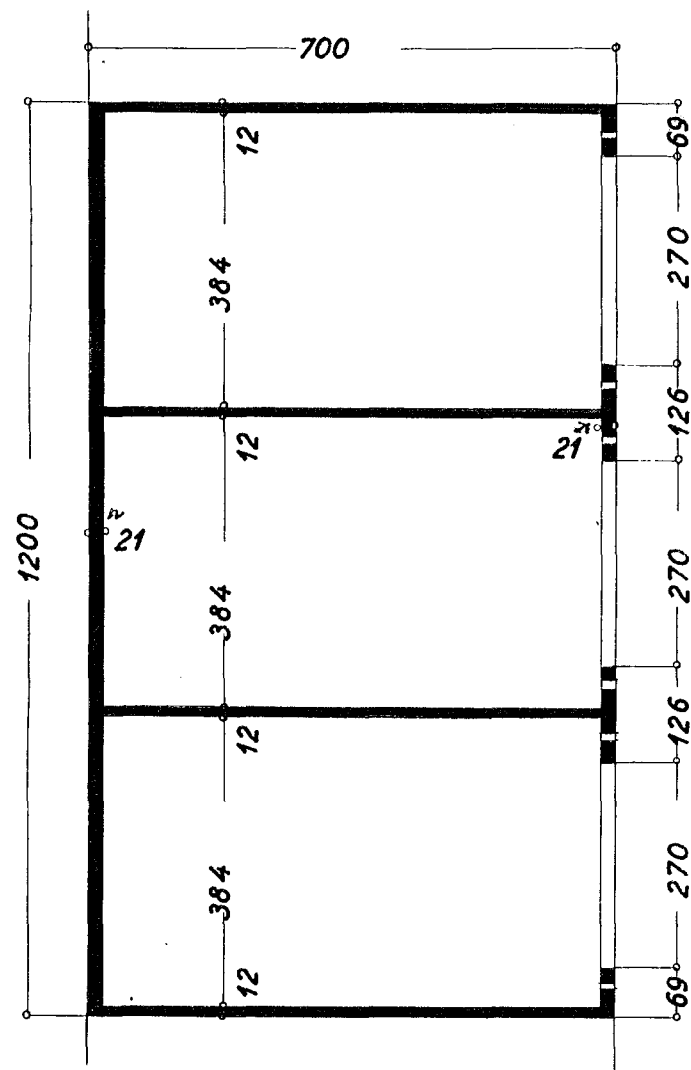
Norðaustur



Suðvestur



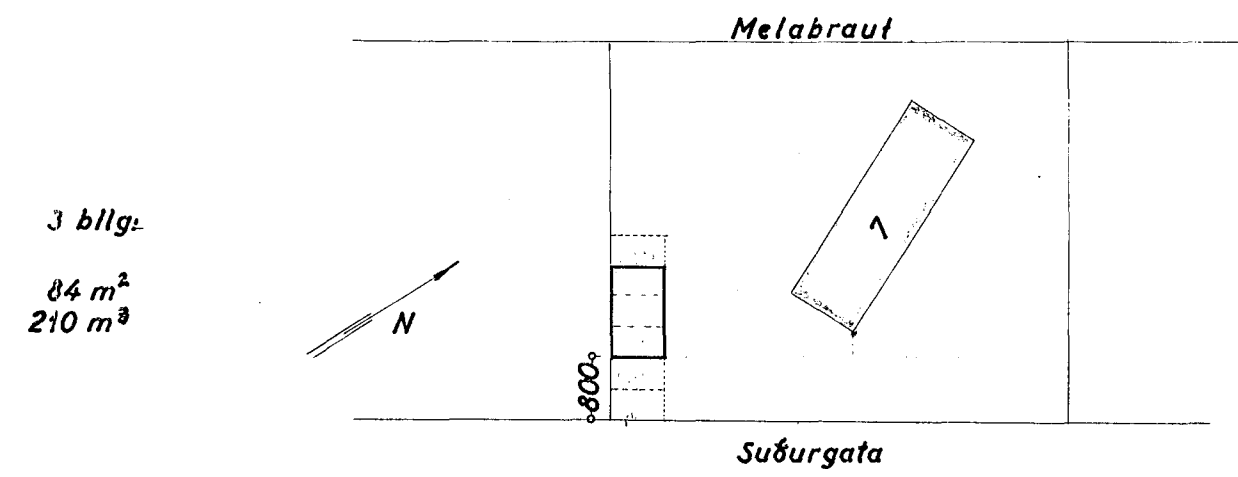
Suðaustur (að Suðurgötu)



Grunnmynd

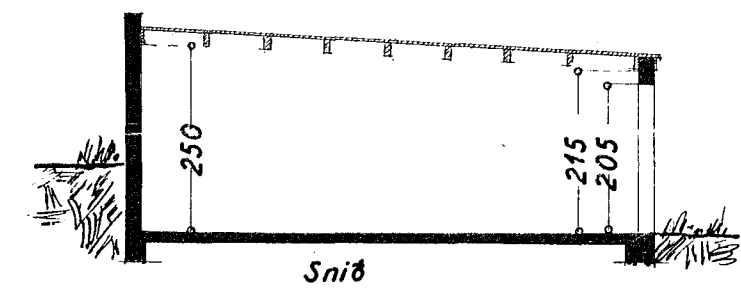
AFSTÖÐUMYND

1:1000

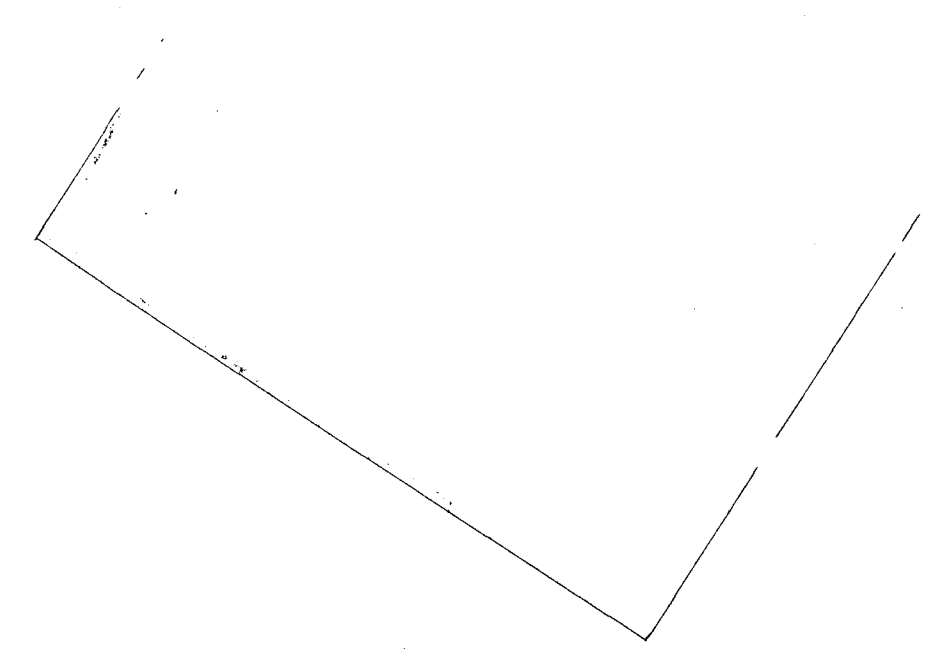


Samþ 23/11 1960

Finnbjörn Hallsson
HÚSAMÍÐAÐEISTARI:
Pjónfríður Jónsson
MÚRARAÐEISTARI:



Snið



Suðurbraut 10-12

Staðmálarísið í sív 1960
F. Sigurðsson