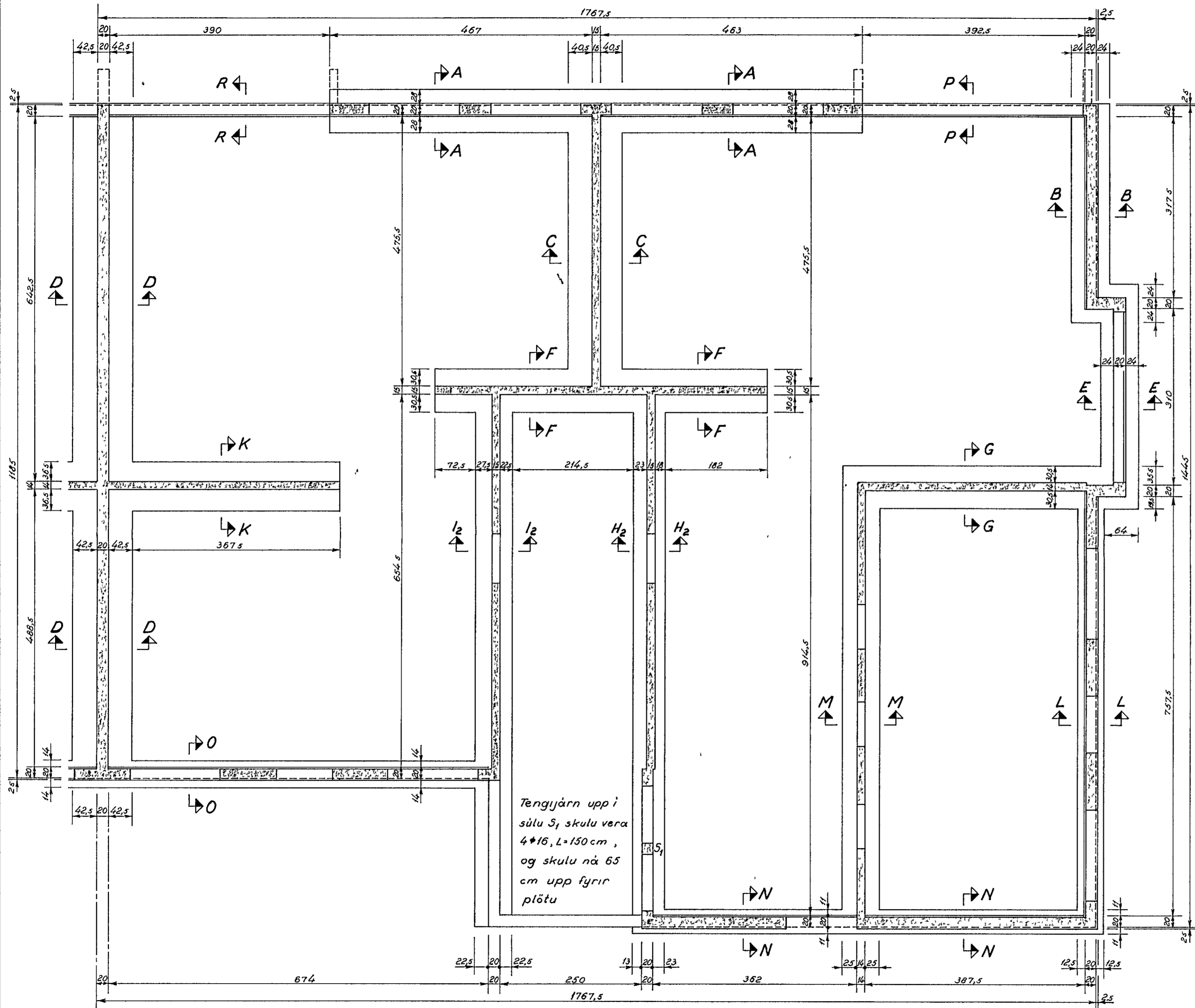
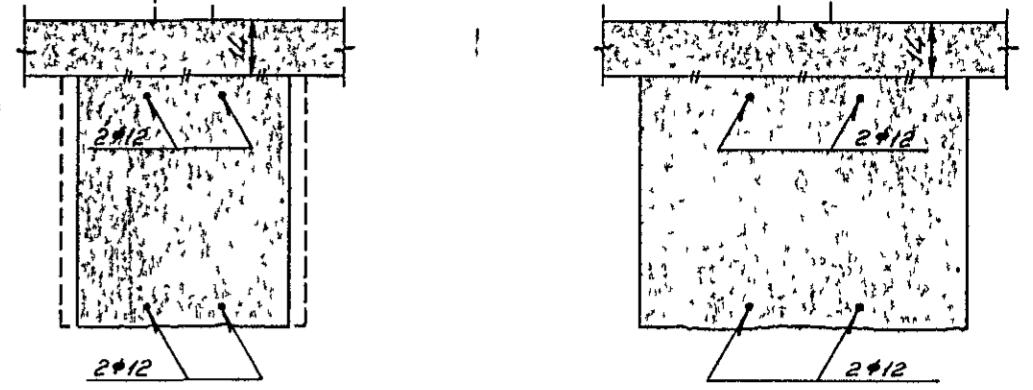


Undirstöður vesturhluta, grunnmynd, 1:50.

Snið, 1:20.



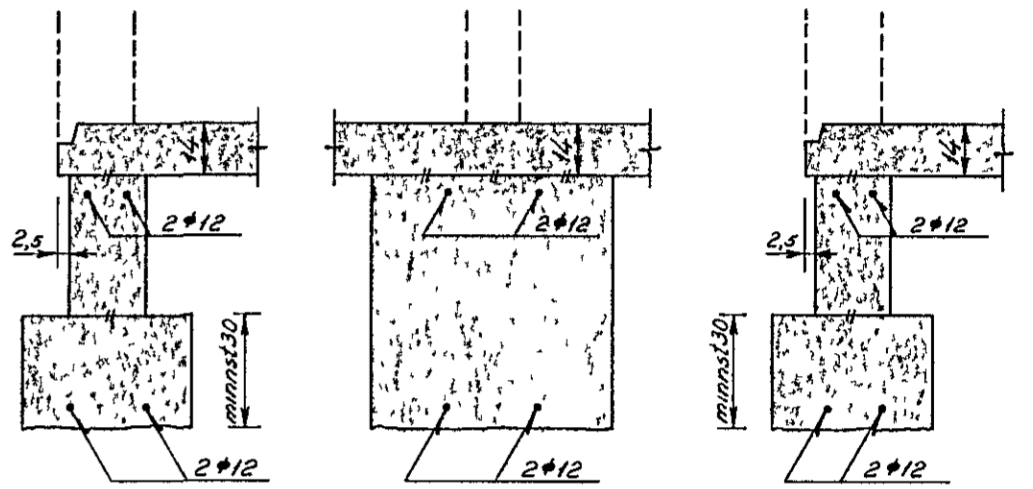
H₂-H₂ og I₂-I₂



L-L

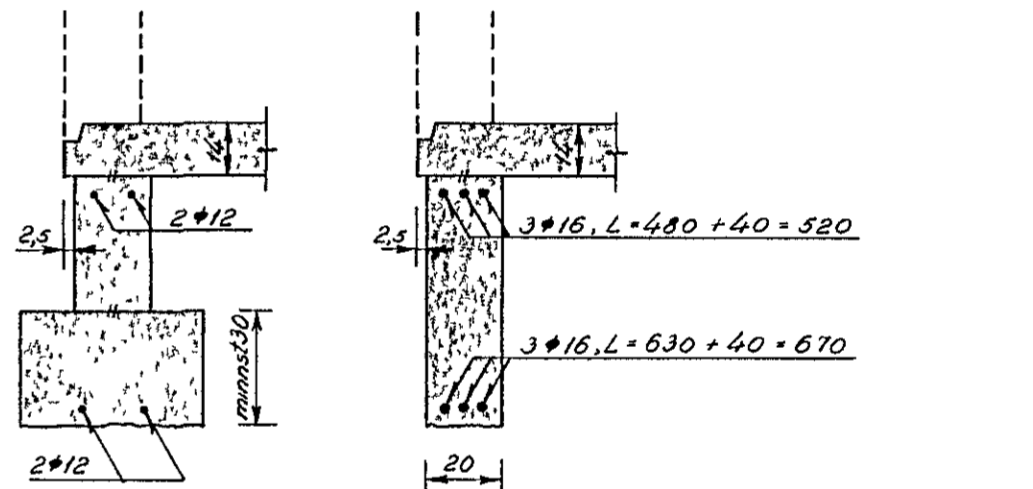
M-M

N-N

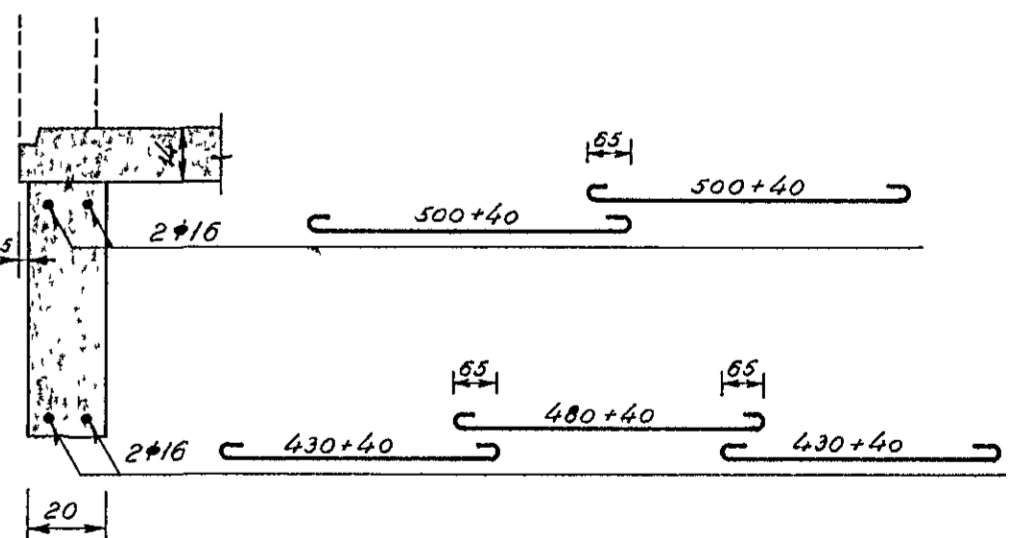


O-O

P-P



R-R



Gegnum öll lárétt steypuskil í undirstöðum skal stinga $\phi 10$ c/c 25, L = 80 cm Flaknr 16

Snið A-A, B-B, C-C, D-D, E-E, F-F og G-G eru sýnd á uppdraetti nr 3902

Allar undirstöður skulu standa á umk 20 cm þykkri fyllingu og hvergi snerta fast berg $\sigma = 1,5 \text{ kg/cm}^2$, miðað við þriggja hæða hús Steypa skal vera K 200 Skeytilengd $\phi 12$ skal vera 60 cm

Álfaskeið nr. 125,
Hafnarfirði.

Vesturhluti
Undirstöður

Gunnar Baldvinsson, verkfræðingur

M 1:50 og 1:20 Dags 1-7-66

Uppdr *Q B* Nr 3903