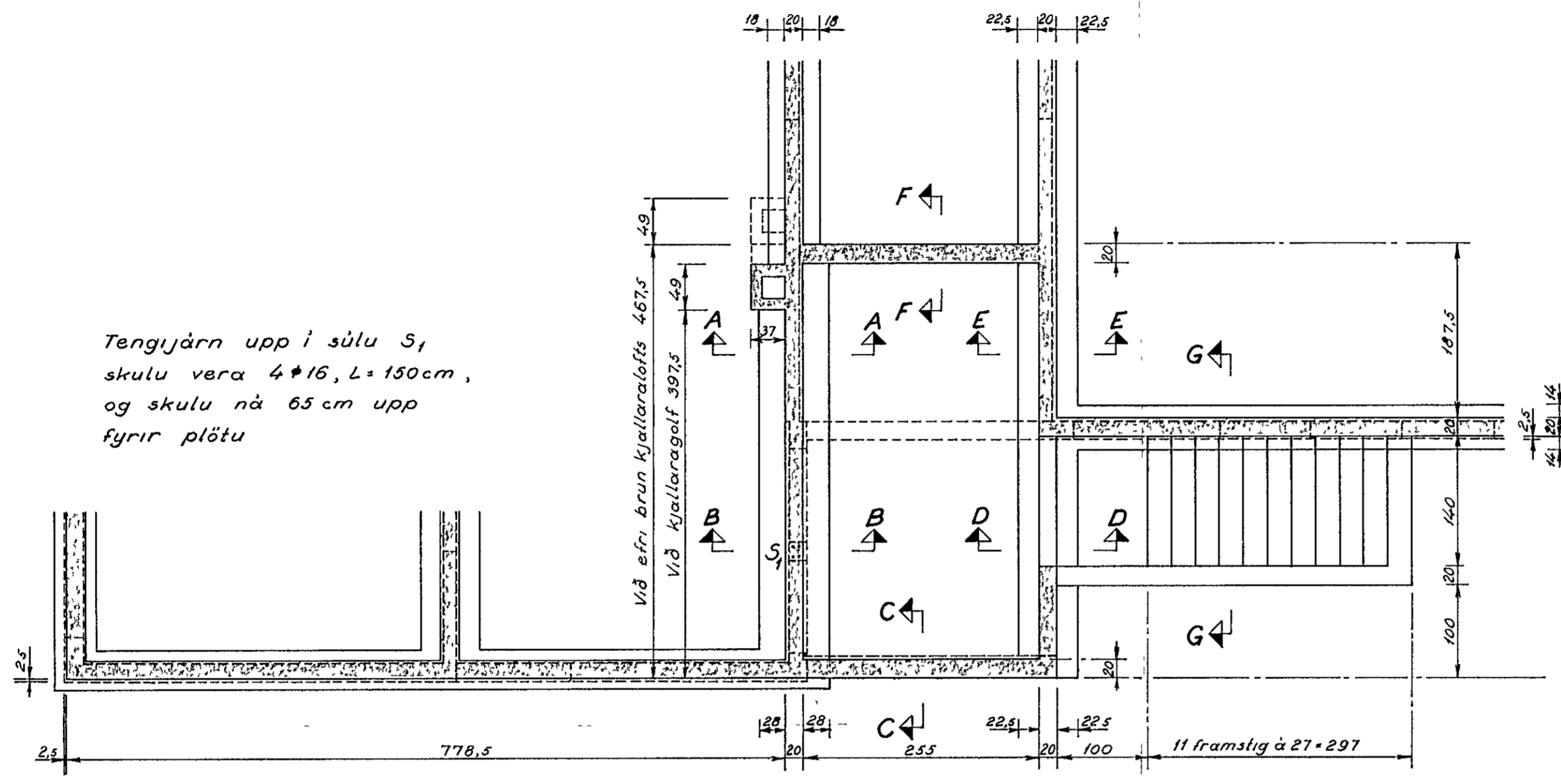




Snið A-A, 1:20

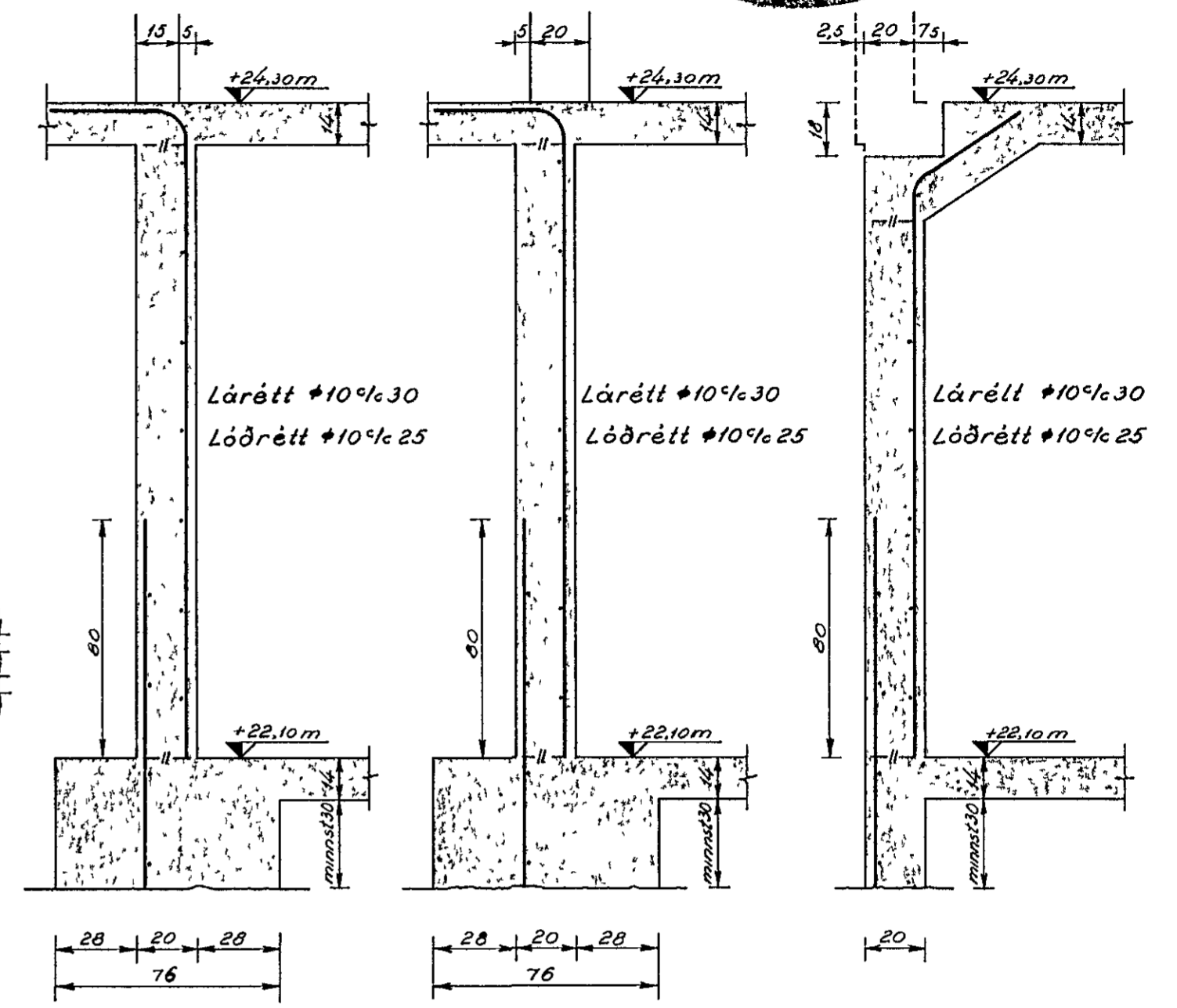
Snið B-B, 1:20 Snið C-C, 1:20

Undirstöður kjallara, 1:50.



Tengijárn upp í súlu S₁ skulu vera 4 #16, L=150cm, og skulu ná 65 cm upp fyrir plötu

Við efri brún kjallaraflöts 467,5
Við kjallaraflötf 397,5



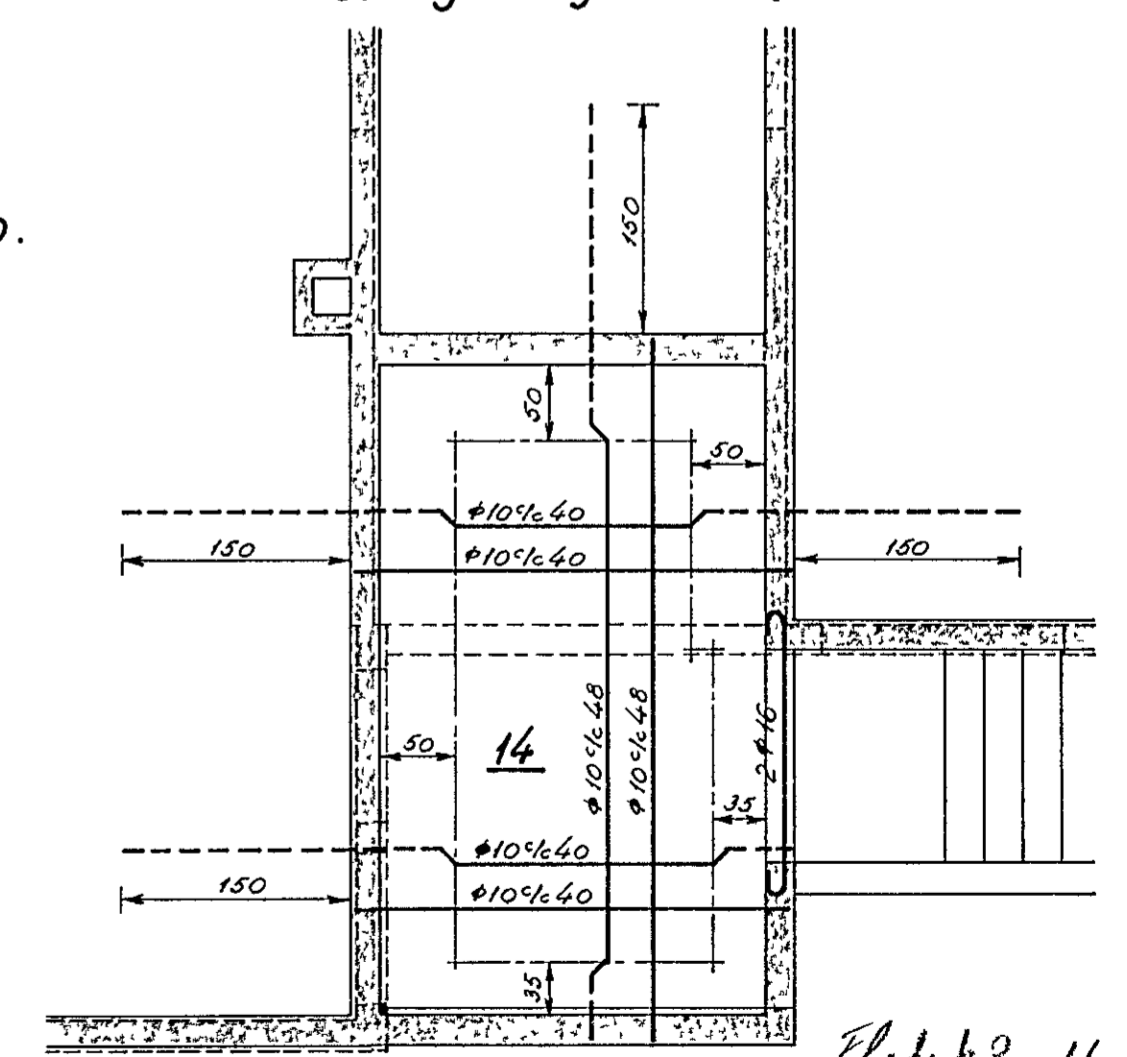
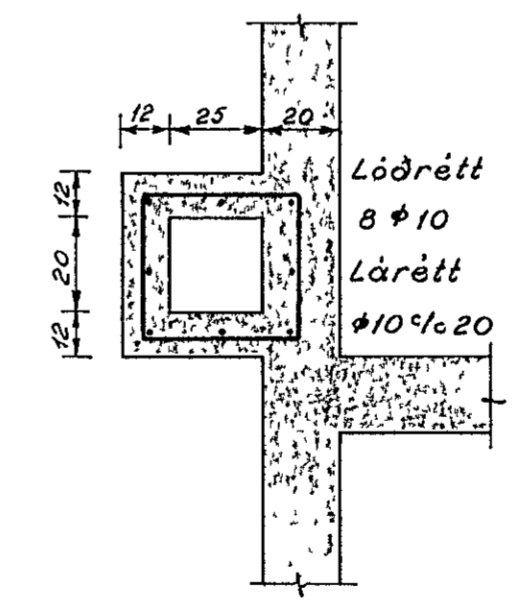
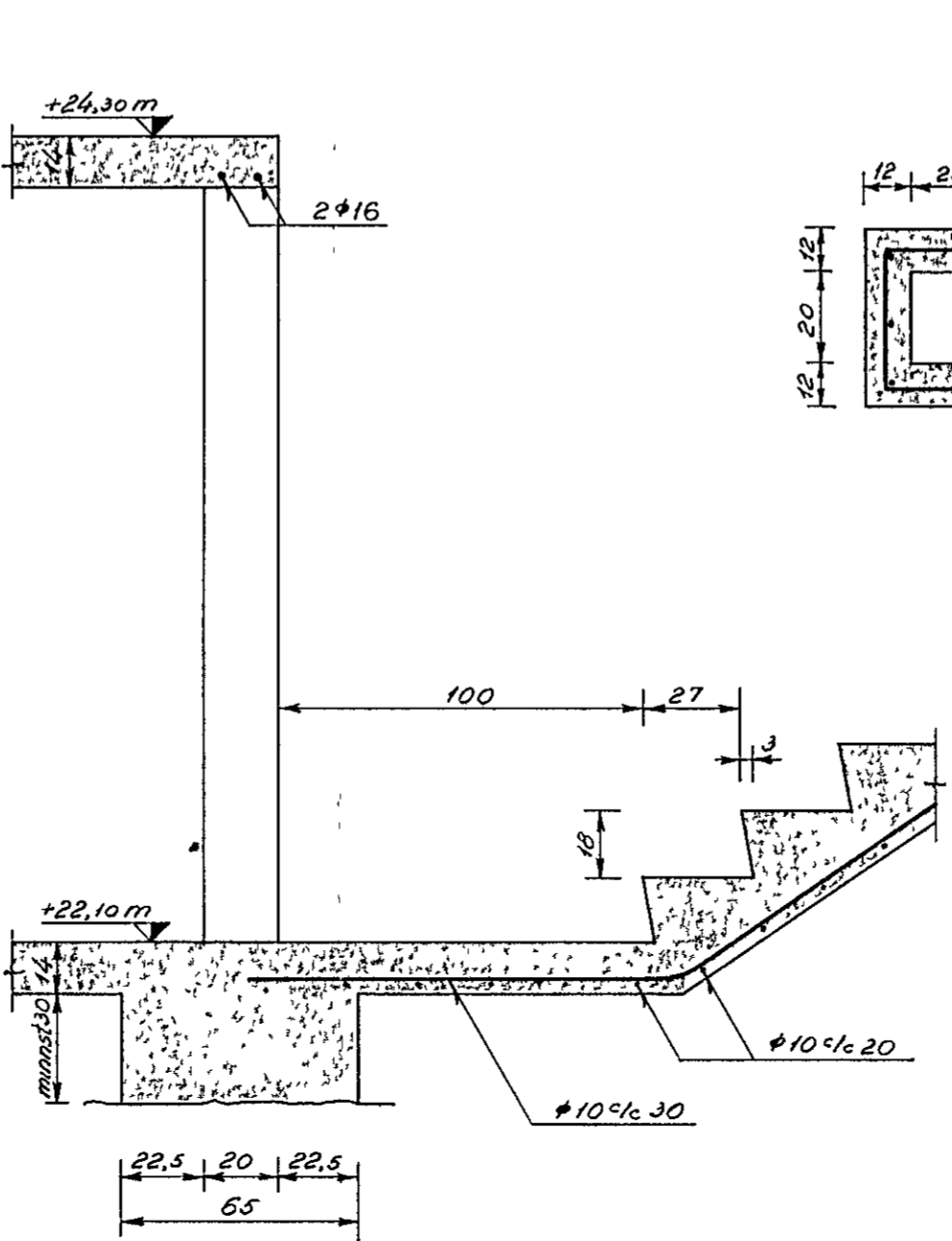
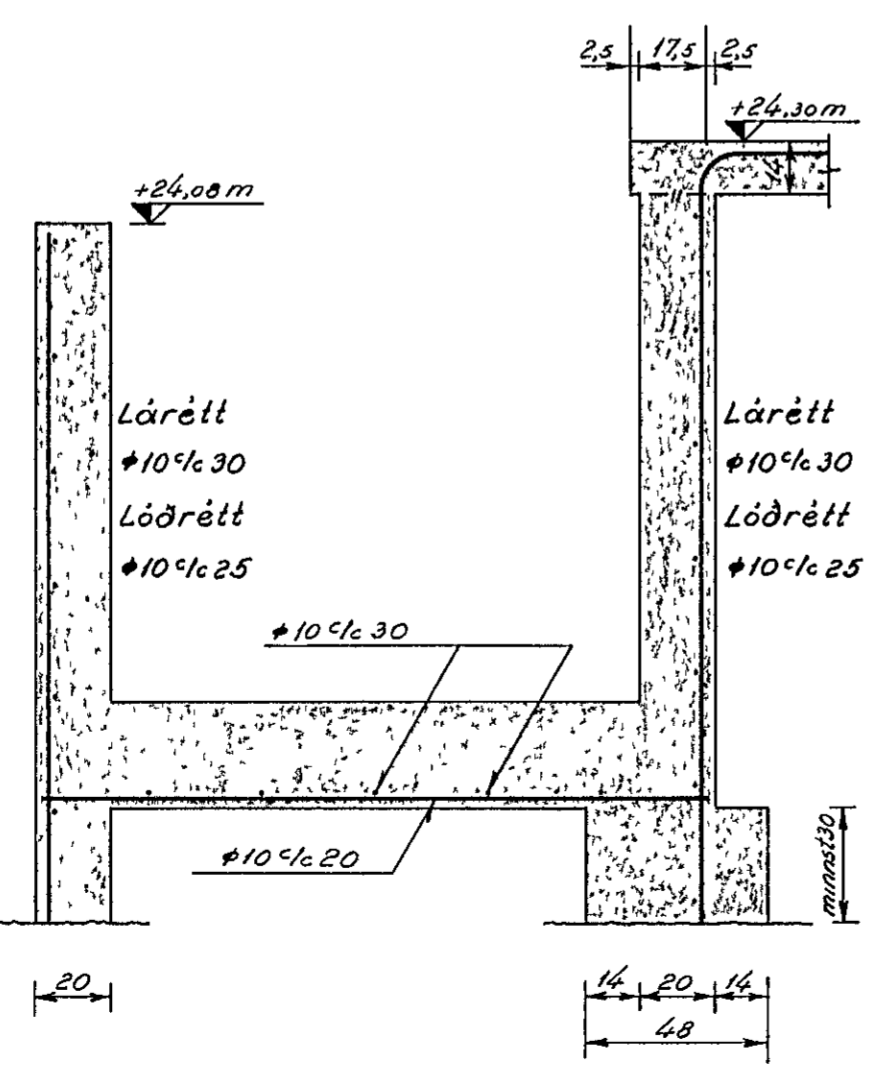
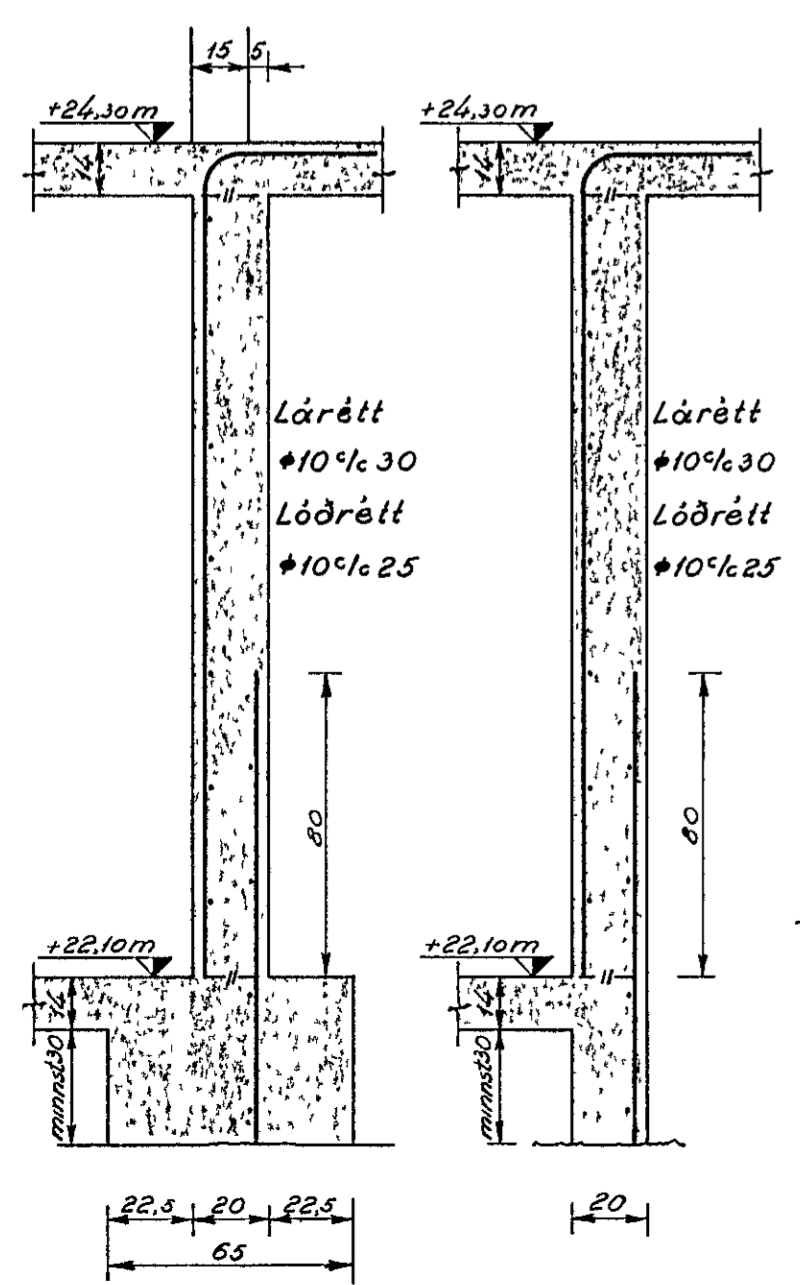
Loft yfir kjallara, 1:50.

Snið E-E, 1:20 Snið F-F, 1:20

Snið G-G, 1:20

Snið D-D, 1:20

Snið i reykhað, 1:20.



Allar undirstöður skulu standa á a m k 20 cm þykkri fyllingu og hvergi snerta fast berg $\sigma_j = 1,5 \text{ kg/cm}^2$, miðað við þriggja hæða hús Steypa skal vera K 200 Skeytilengd #10 skal vera 50 cm.

Altaskeið nr. 125, Hafnarfirði.	
Kjallari	
Gunnar Baldvinsson, verkfræðingur	
M 150 og 120	Dags 12-6-66
Uppdr. G.B.	Nr 3901

Plötukr. 16