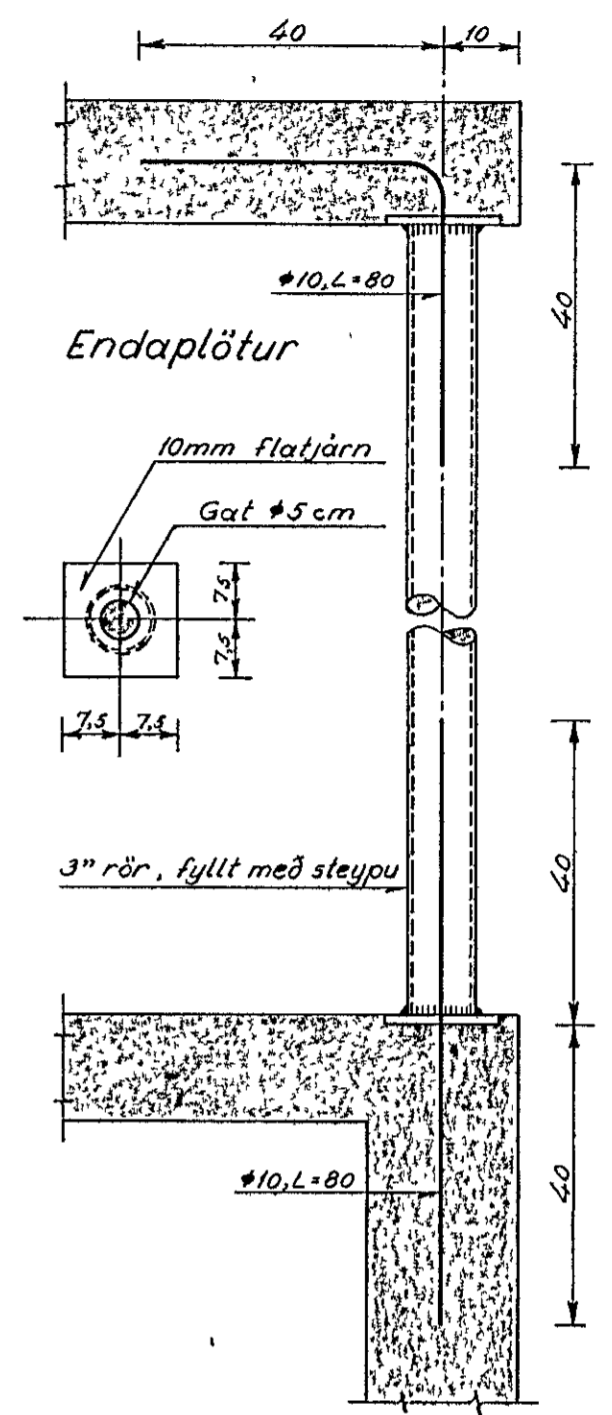
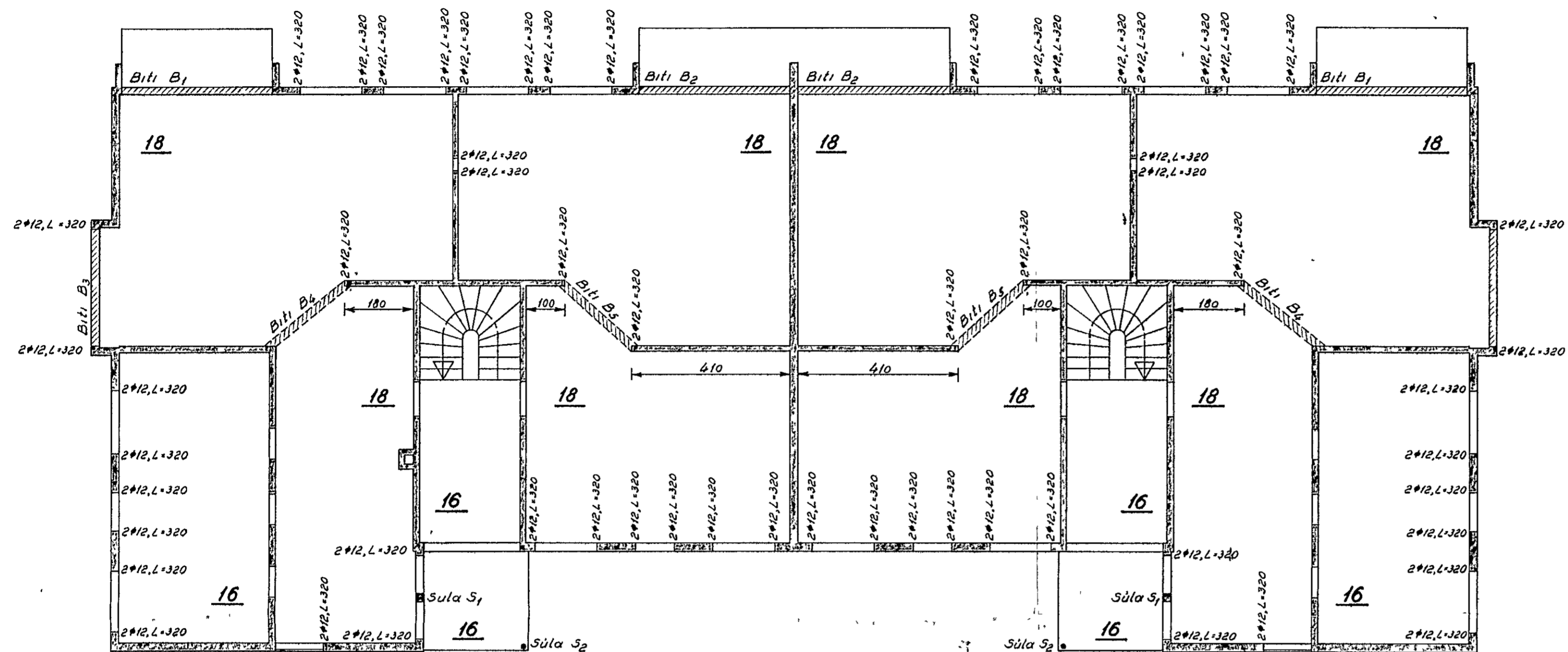


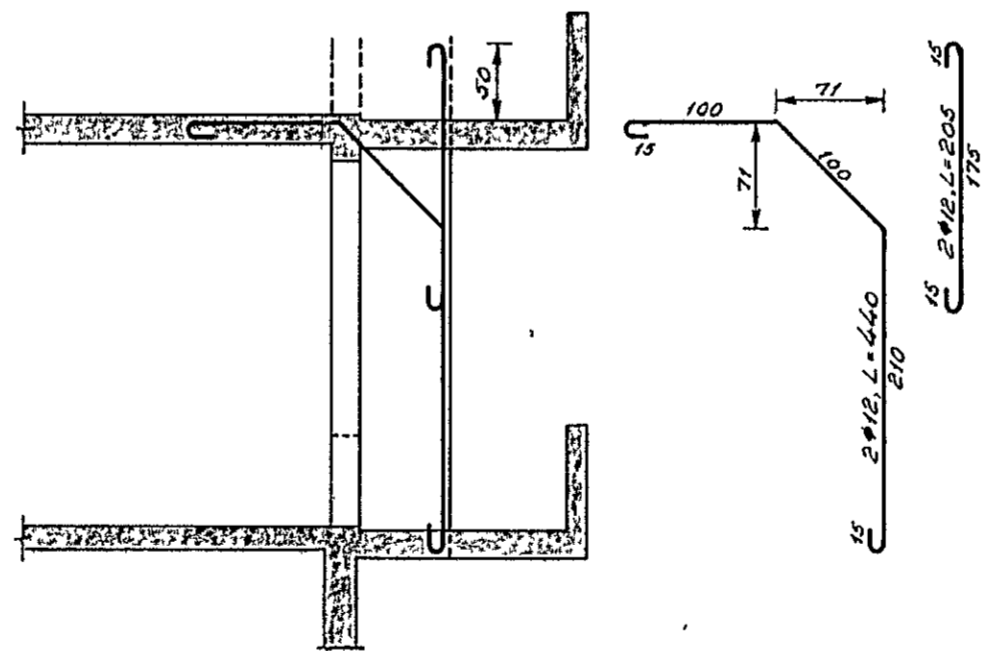
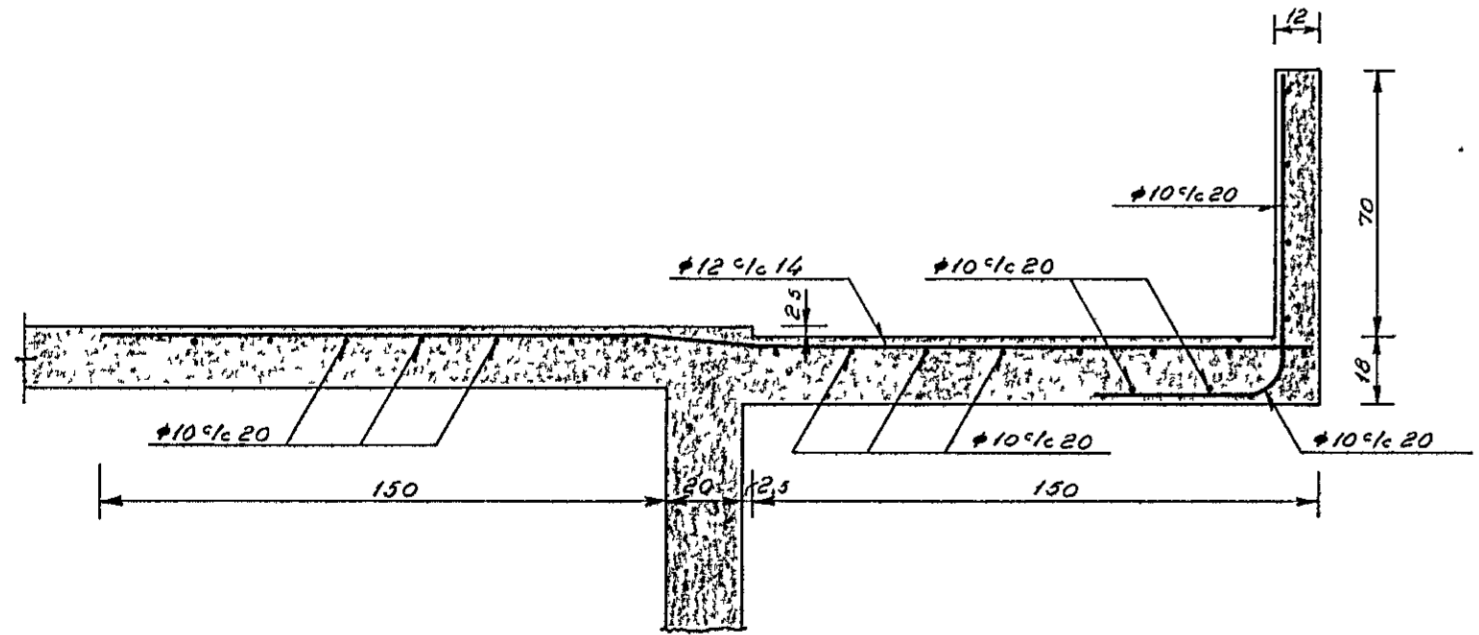
Grunnmynd af 1. hæð, 1:100.

Súla S₂, 1:10
 (Alls 2 stk)
 HAFNARJARDARBAER
 BYGGINGAFULLTRUINN

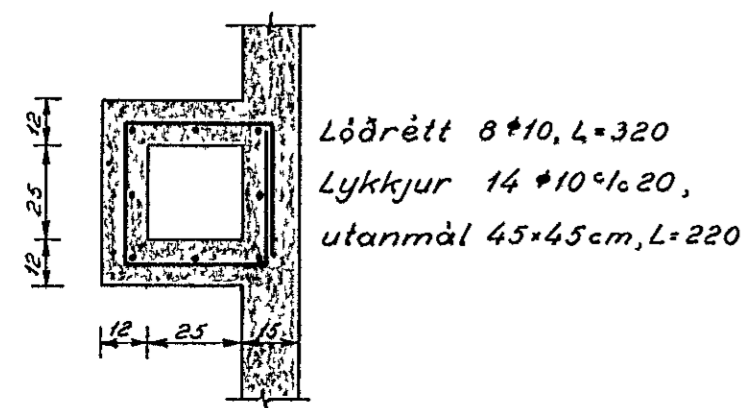


Veggþatar við svalir, 1:50.
 (Alls 7)

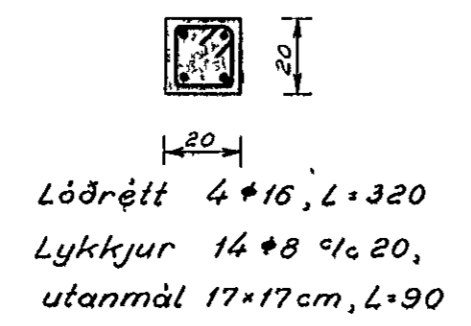
Snið i svalir, 1:20.



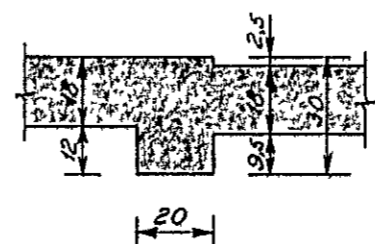
Snið i reykþáf, 1:20.



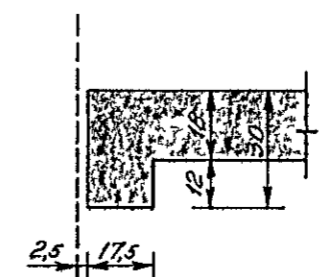
Súla S₁, 1:20.
 (2 stk)



Snið i bita B₁ og B₂, 1:20.



Snið i bita B₃, 1:20.



Bitar B₁-B₃ eru sýndir á uppdrætti nr 3905 styrkleiki steypu K 200
 Undir glugga skal setja 2#12, sem nái 50 cm út fyrir gluggana hvoru megin.
 Upp með öllum dyraopum skal setja 2#12, L=260 cm, hvoru megin
 Yfir alla glugga skal setja 3#12 og yfir öll dyraop 2#12, nema þar sem bitar eru, járnin nái 50 cm út fyrir múropin hvoru megin

Flatahlutarn 16

Alfaskeið nr. 125, Hafnarfirði.	
Veggir, súlur og svalir á 1. hæð. Járnalögn.	
Gunnar Baldvinsson, verkfræðingur	
M 100, 150, 120, 110	Dags 25-8-66
Uppdr Q B	Nr. 3904