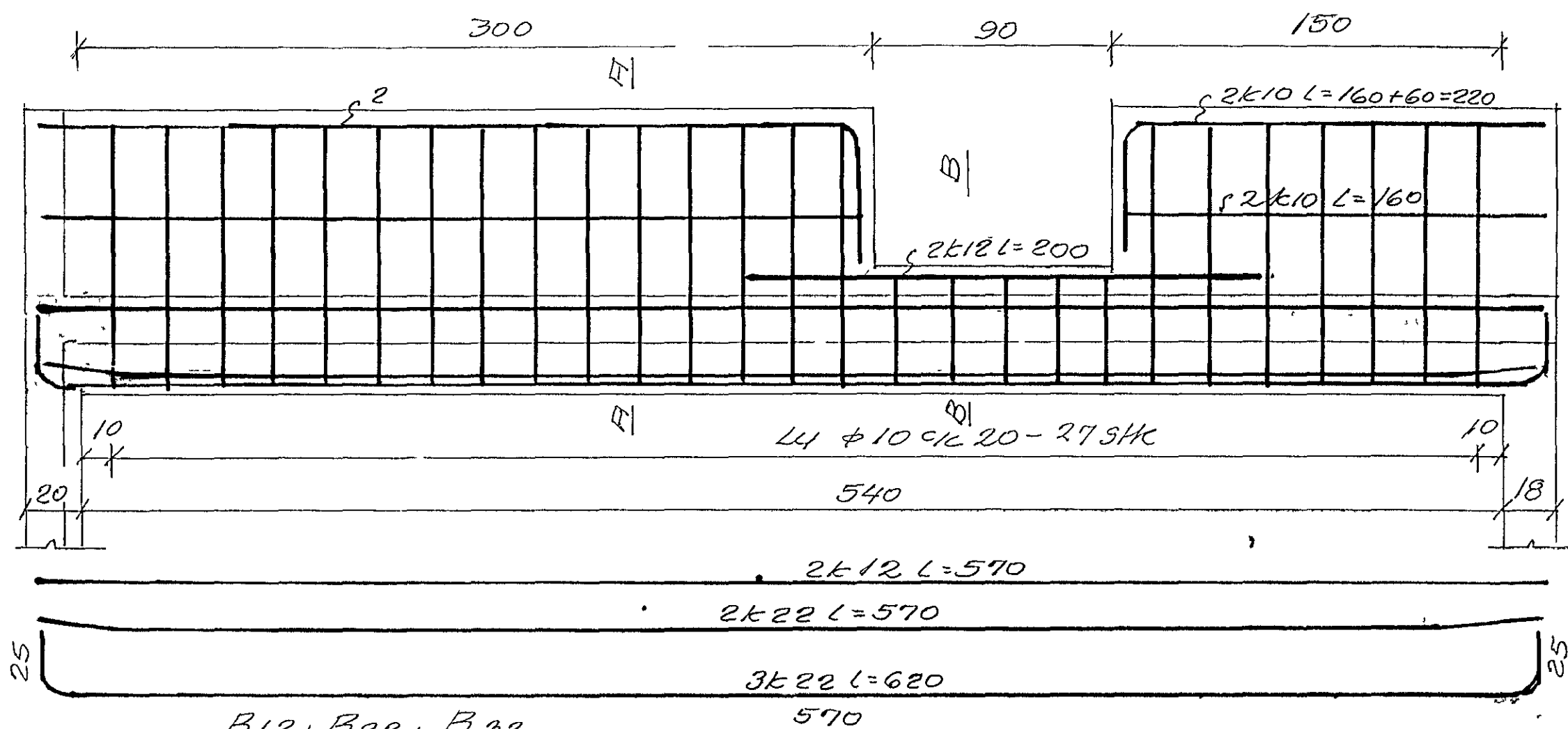
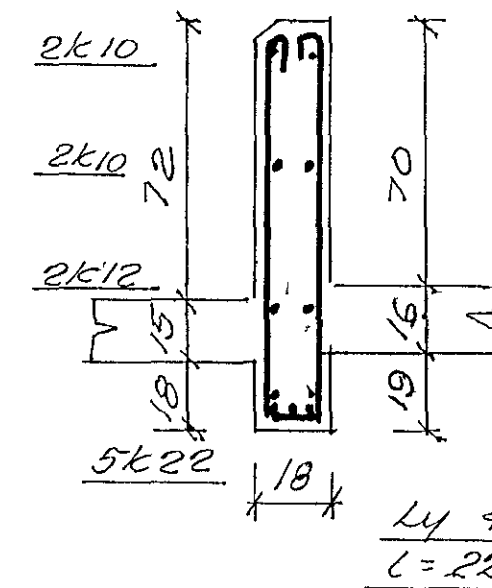


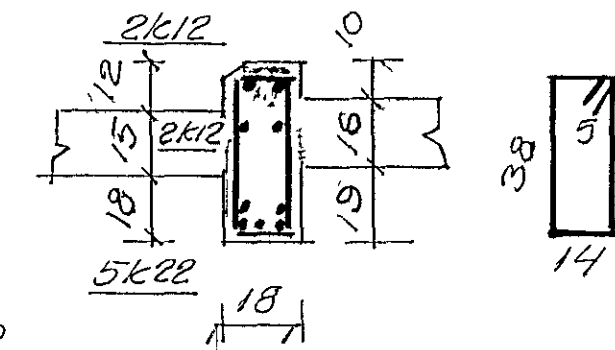
B11; B21; B31



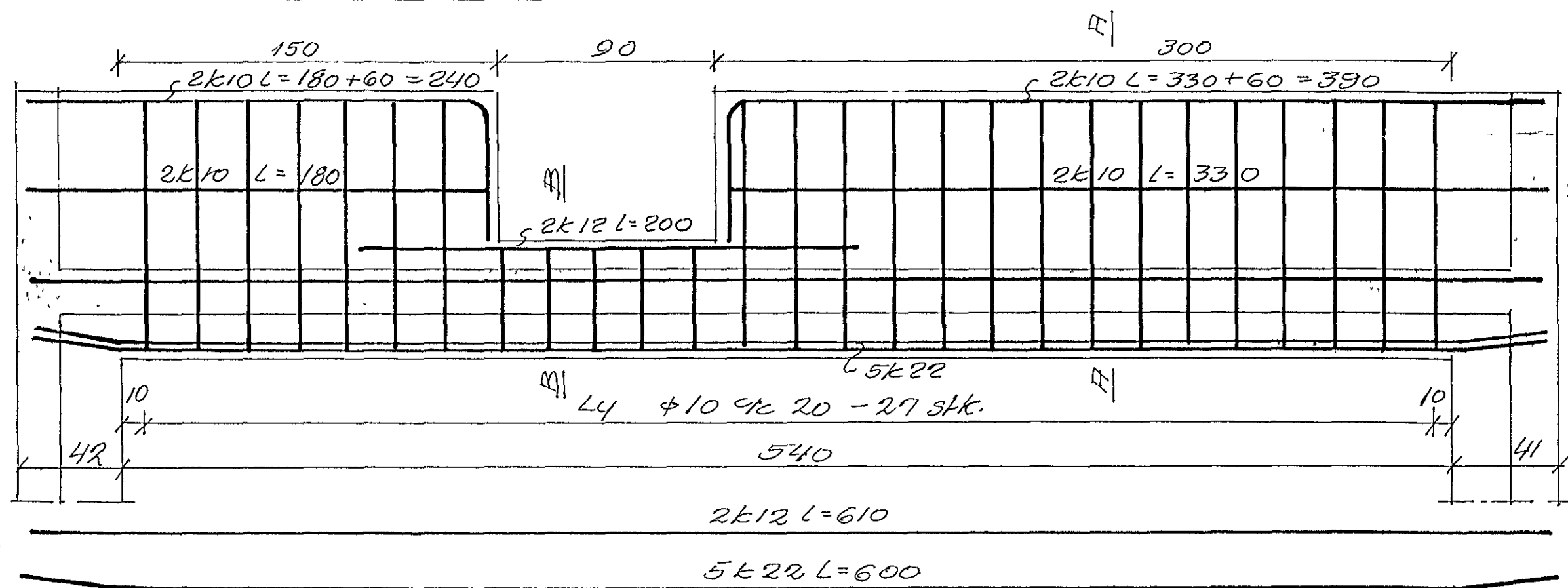
Snid A-A



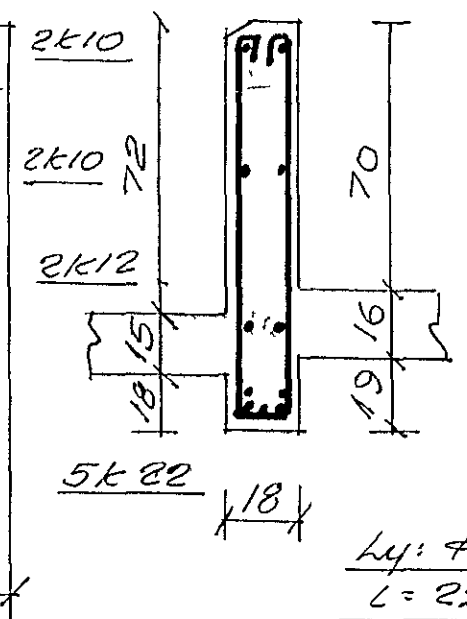
Snid B-B



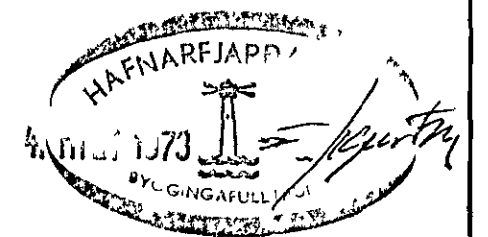
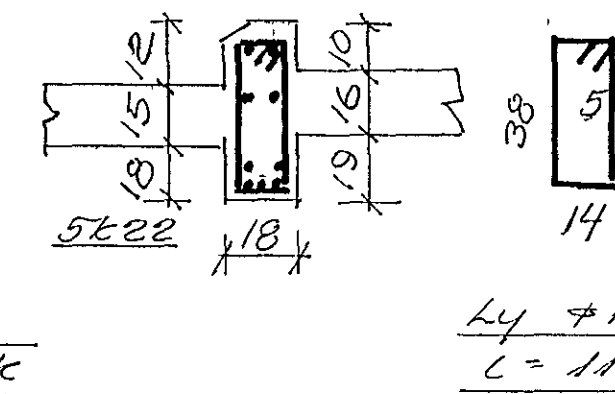
B12; B22; B32



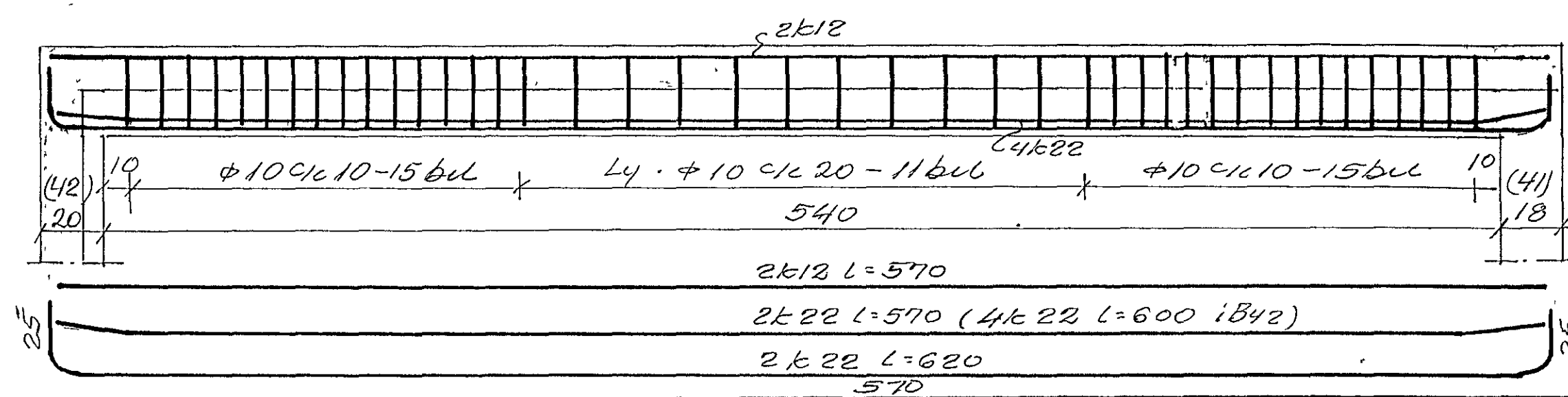
Snid A-A



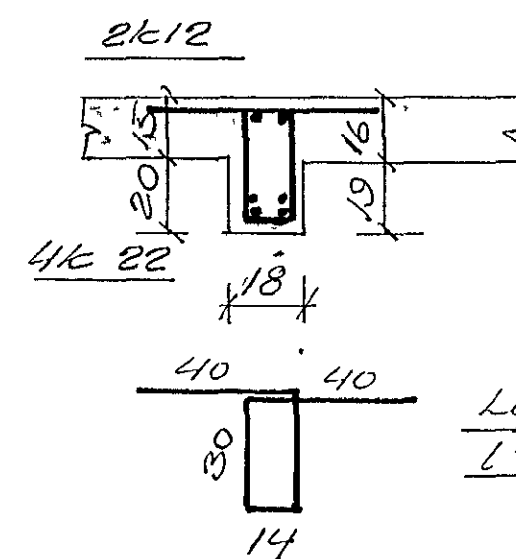
Snid B-B



B41 (B42)
(Mál B42 sett í svögg)



Snid i B41 (B42)



Endia k22 41

k22 skal beygja um þoll 40cm í þvermál

Benedikt B Sigrúðsson vertak		
Hjallabrátt 37 H		
M	1:20	Jambent skýpa.
D.	apr '73	Bitar. B1, B2, B3, B4, B12, B22, B32, B42
Nr.	6.	Þm. Þ. Sigrúðsson