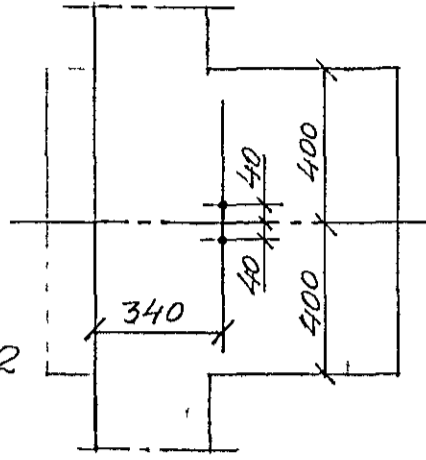
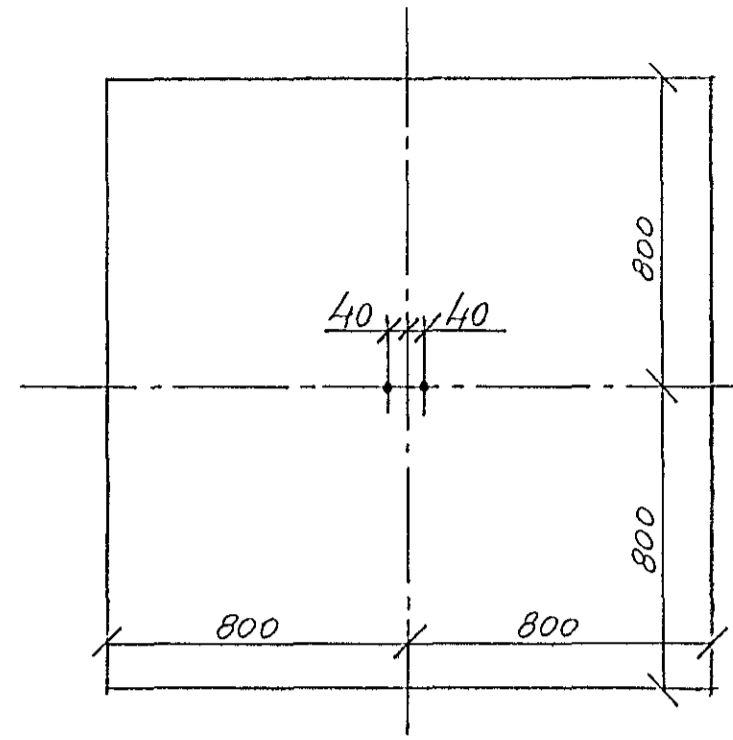
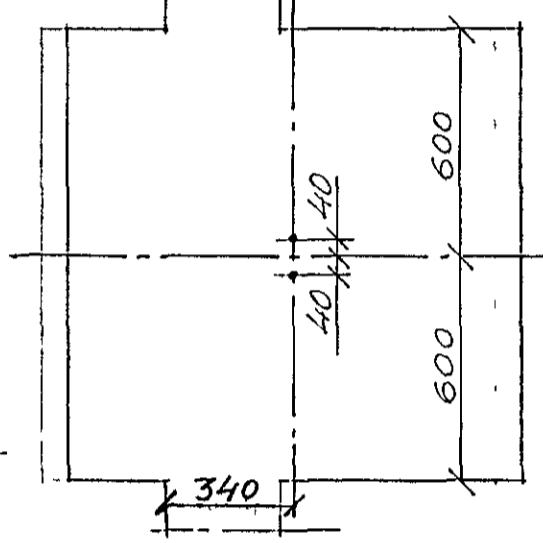


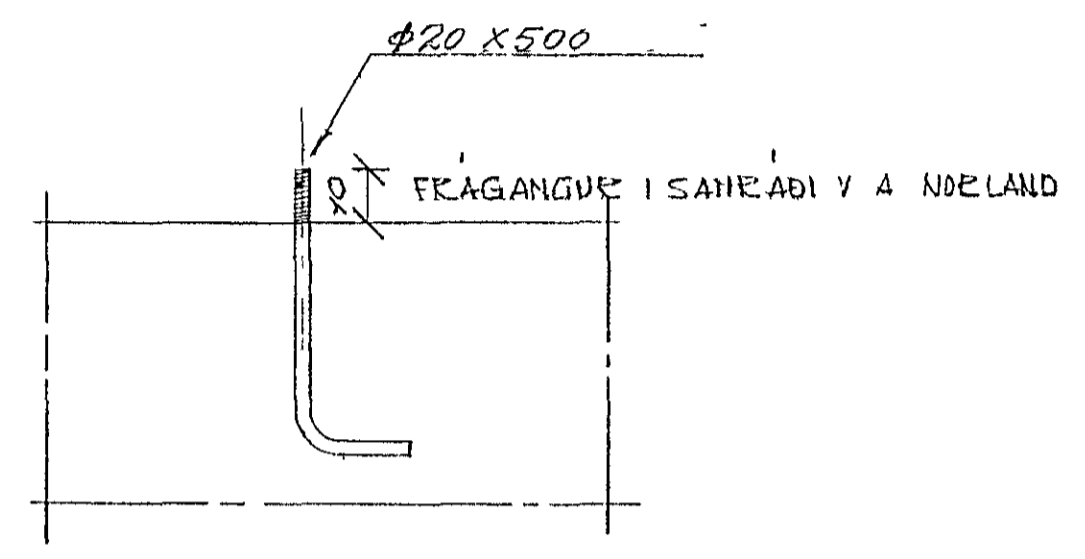
B1, B12  
C1, E1, C12, E12



D1, D12



E2, E3, E4, E6, E7, E9, E10, E11

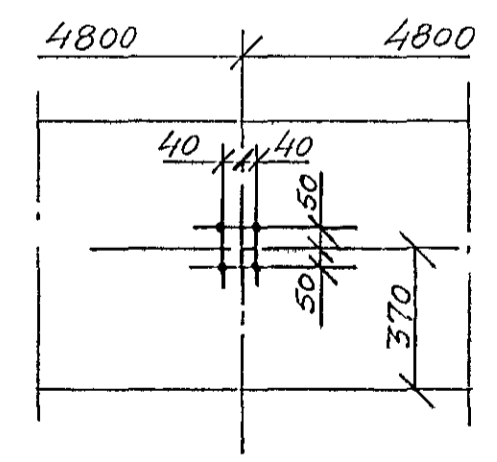
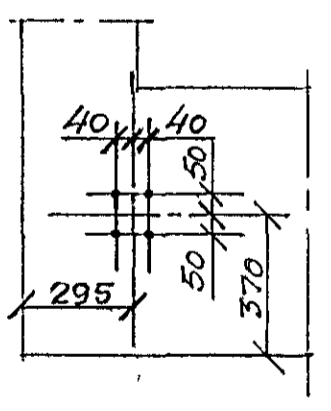


Festiboltar 1.10. Allir boltar eins.

Undirstöður í línu A komi 1.10.

4 boltar  $\phi 20$ . Í allar aðrar undirstöður komi 2 boltar  $\phi 20$ .

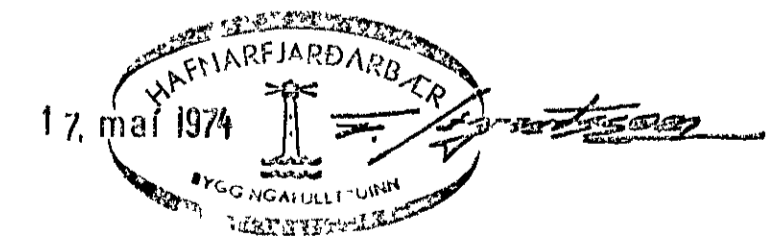
A1, A12



A2, A3, A4, A5, A6, A7, A8

Grunnmyrddir 120

Öll mál eru mm.



					BÖRKUR MF HAFNARFJÖRÐI VERKSMÍÐJUHÚS VIÐ HJALLAHRÁUN				
					STAÐSETNING FESTIBOLTA				
BR	DAG	BREYTING Á	LEGA	USKR	REYKJAVÍK 3-5-'74			KVARDI 120,110	
BRAGI ÞORSTEINSSON EYVINDUR VALDEMARSSON BYGGINGAVERKFRÆÐINGAR M.V. SUDURLANDSRAUT 2 - SIMI 3758J					TEIKN	REIKN	VERK	BL NR	BR
					ATH	SAMP	7421	3	