

Grunnmynd 1:50

Arun skal járnbanda í útbrún reykhöps, með opnum Lykkjum $\phi 8$ φ 15 er gangi 10 sm inn í úrvegg. Lóðrétt járn eru 4 stk $\phi 8$ í efri brún reykhöps skal steypta kraga er nálar að sperrum og vaxslí. Sjá mál og frágang á sérteikningu arkitektta.

tengijárn K10 φ 20 lóðrétt og lóðrétt

rörsúla með ásoðnum flösum 10x10 sm. L=160 sm

K10 φ 20, lóðrétt járn í händriði beygist 50 sm fyrir horn.

Snið D 1:50

steypuþéð: S160.

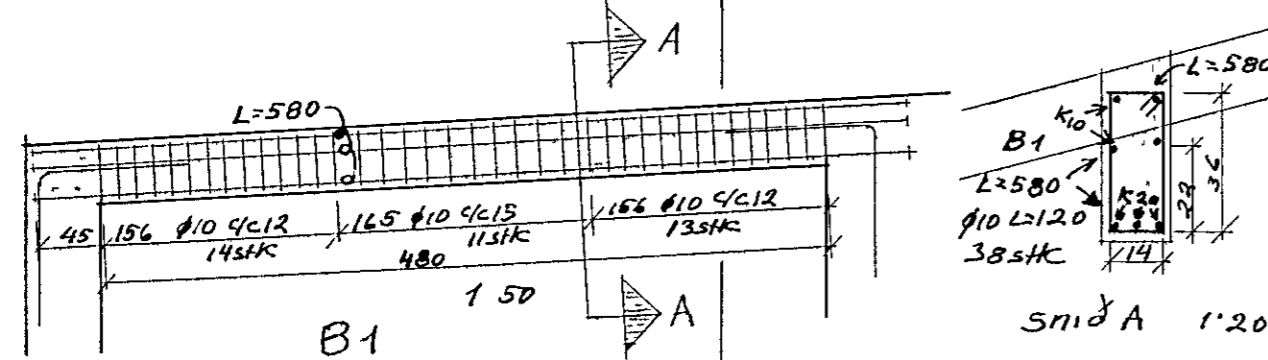
Efsta járn í bitum skal þróa í gegnum sperrur í bitum B2 og B3 skal tengja efstu járn saman. Vínkilbeygð járn K10 L=200 skulu tengja saman bita og súlur.

Umhverfis öll op og lóðrétt í veggenda komi 2 K10 nema bitar eða súlur séu fyrir.

Undir sperrur komi 2 K10 allan hringinn nema þar sem bitar eru.

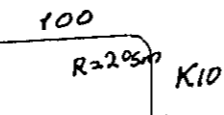
Lóðrétt K10 φ 20 L=150

Lóðrétt járn K10 φ 20 L=150

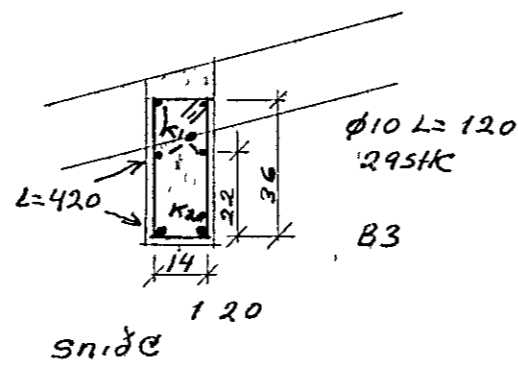


Snið A 1:20

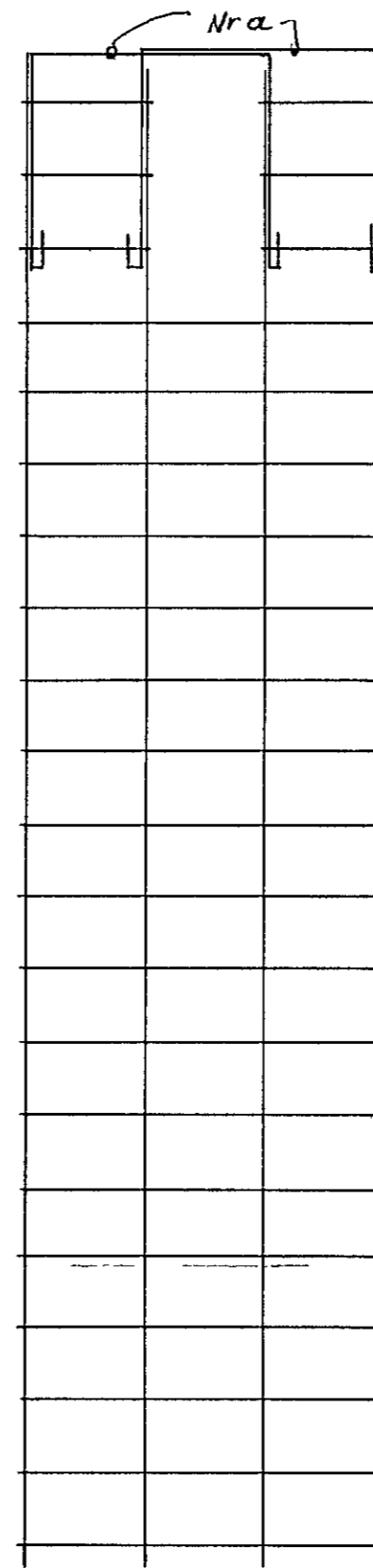
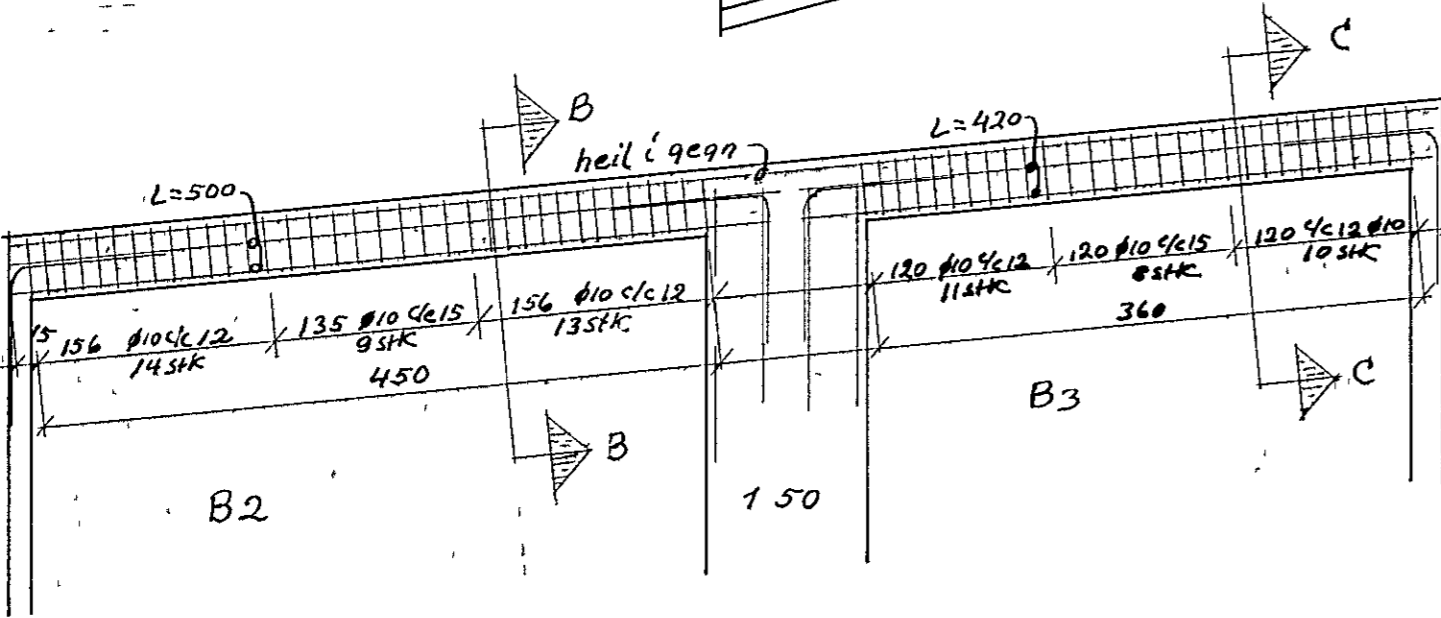
tengijárn # K10 φ 20 L=100



tengijárn milli bita og súlu 3-stk í hvernda L=200, 18-stk.



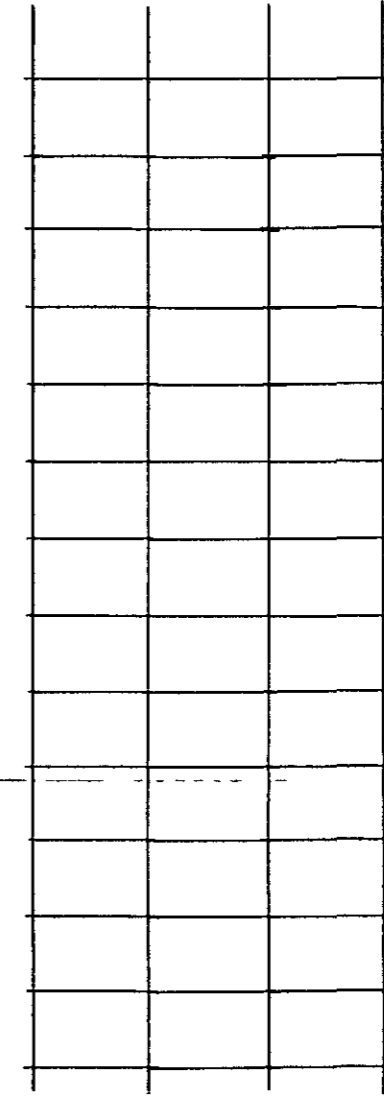
Snið C 1:20



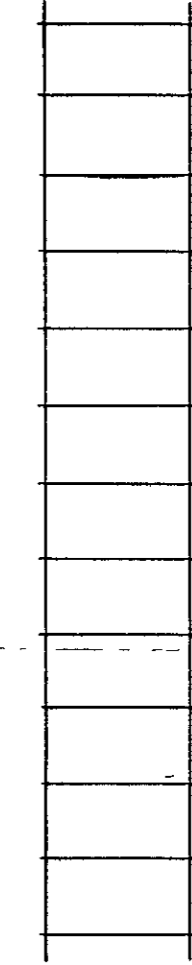
S1: K10, L=415, 8-stk
S5: K10, L=395, 8-stk



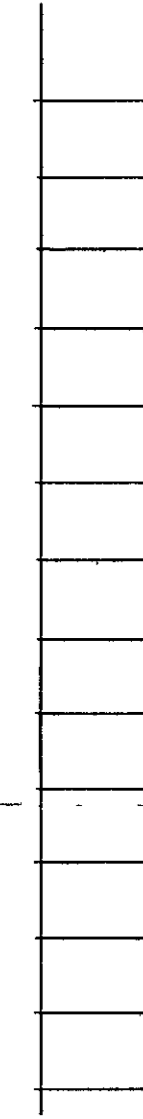
S2: K10, L=320, 4-stk
S3: K10, L=230, 4-stk



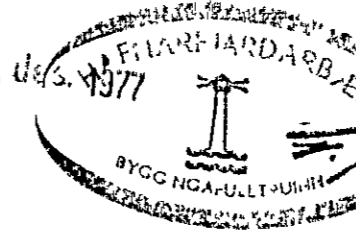
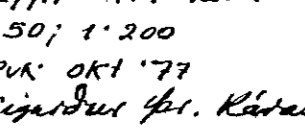
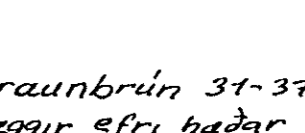
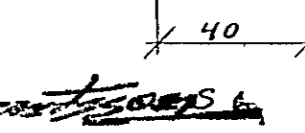
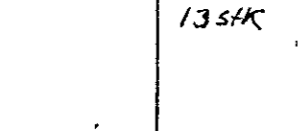
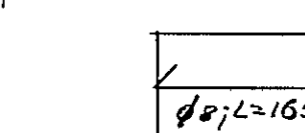
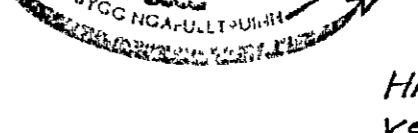
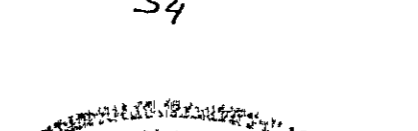
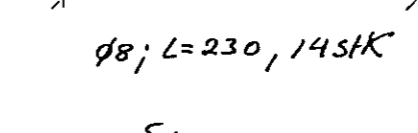
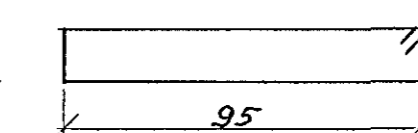
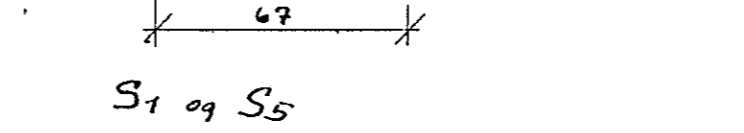
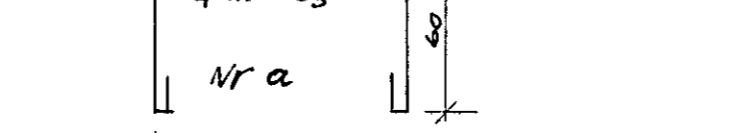
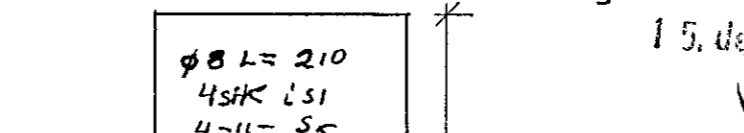
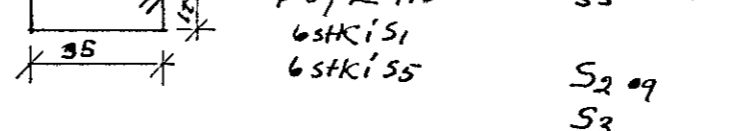
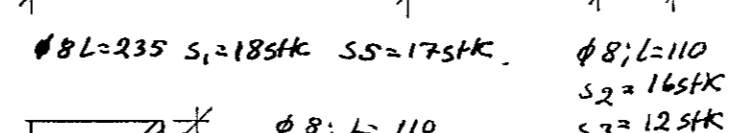
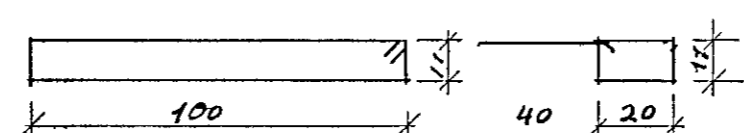
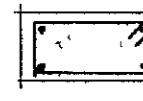
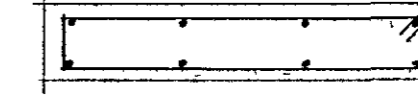
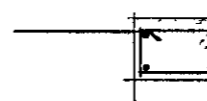
S4: K10, L=285, 8-stk



S6: K10, L=250, 4-stk



S7: K10, L=290, 4-stk



Hraunbrún 31-37 HF
Veggir efri hæðar
1:50; 1:200
RÚK OKT '77
Sjónvísing hf. Kópavogur.

35