

Grunnmynd 1.50

Arin skal jarnbenda i utbrun reykops, med opnum lykkljum $\phi 8$ $\phi 15$ er gangu 10 sm um i uteveg. Lóðrétt jarn eru 4 stk $\phi 8$ i efri brun reykops skal steypa kraga er nái að sperrum og væksti. Sjá mürmal og frágang á sérteikningu arkitekta.

Langjárn K10 ϕ 20 lóðrétt og lóðrétt

rörsula með ásoðnum plösum 10x10 sm. L=160 sm

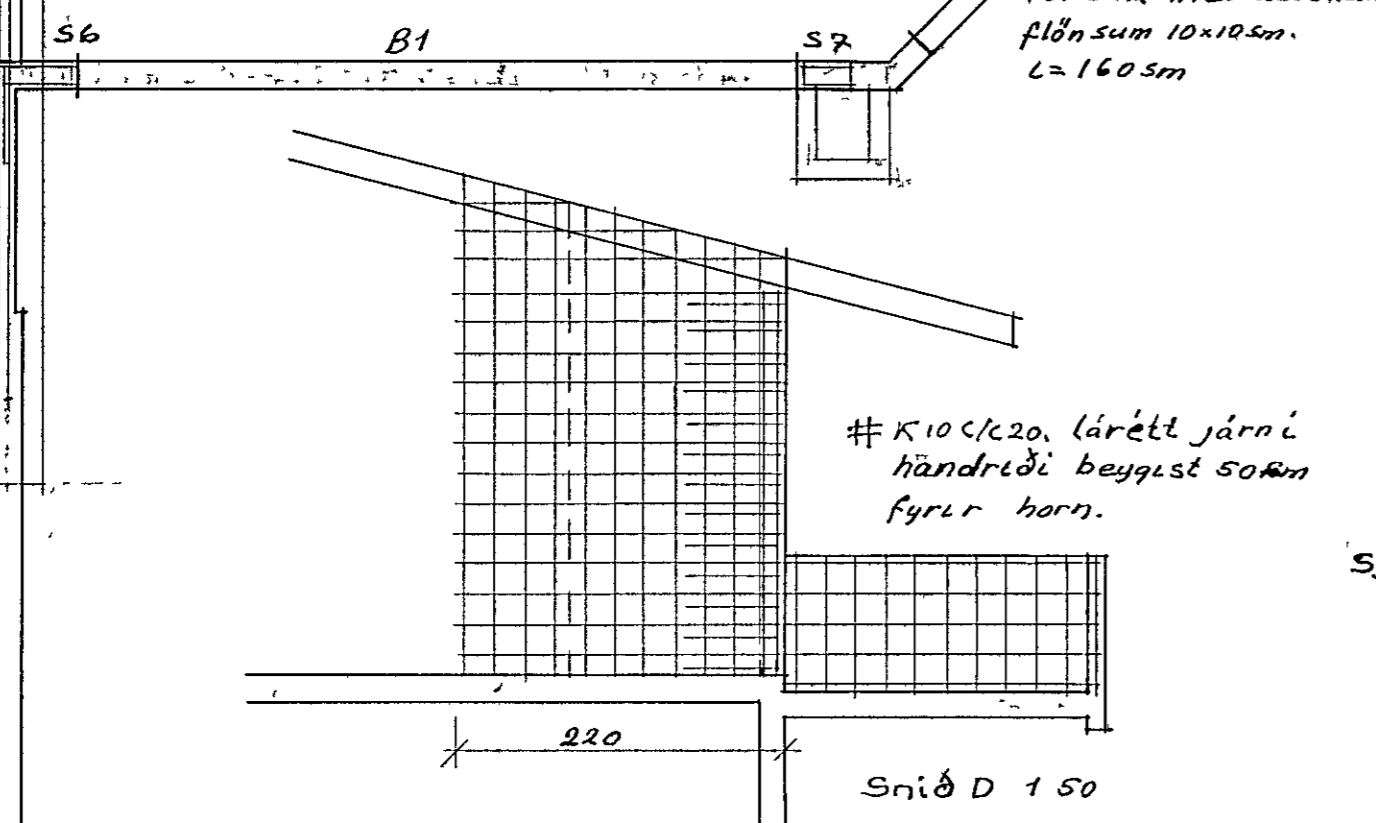
K10 ϕ 20, lóðrétt jarn i handræði beygust 50 mm fyrir horn.

Steypuháði: S160.

Efstu jarn i bitum skal þræða í gegnum sperrur i bitum B2 og B3 skal tengja efstu jarn saman. Vinkilbeygð jarn K10 L=200 skulu tengja saman bita og súlur.

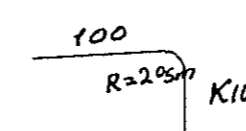
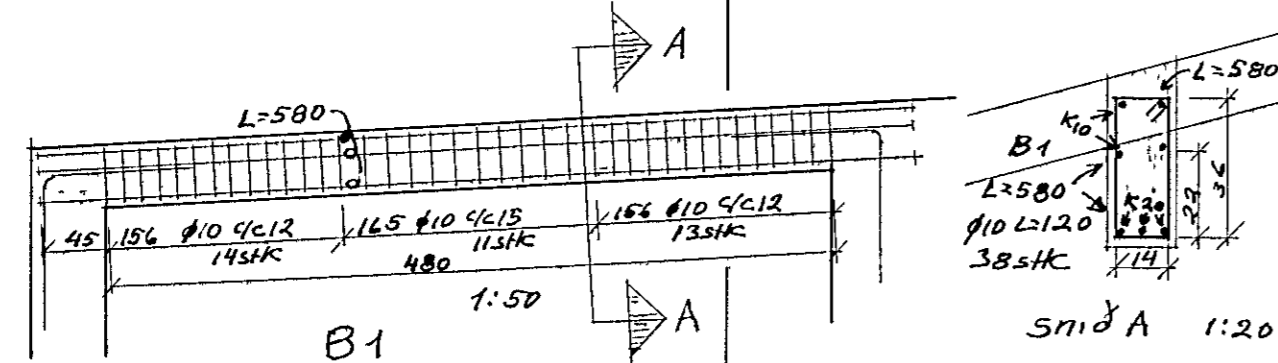
Umhverfis öll op og lóðrétt i veggenda komi 2 K10 nema bitar eða súlur sex fyrir.

Undir sperrur komi 2 K10 allan hringinn nema þar sem bitar eru.



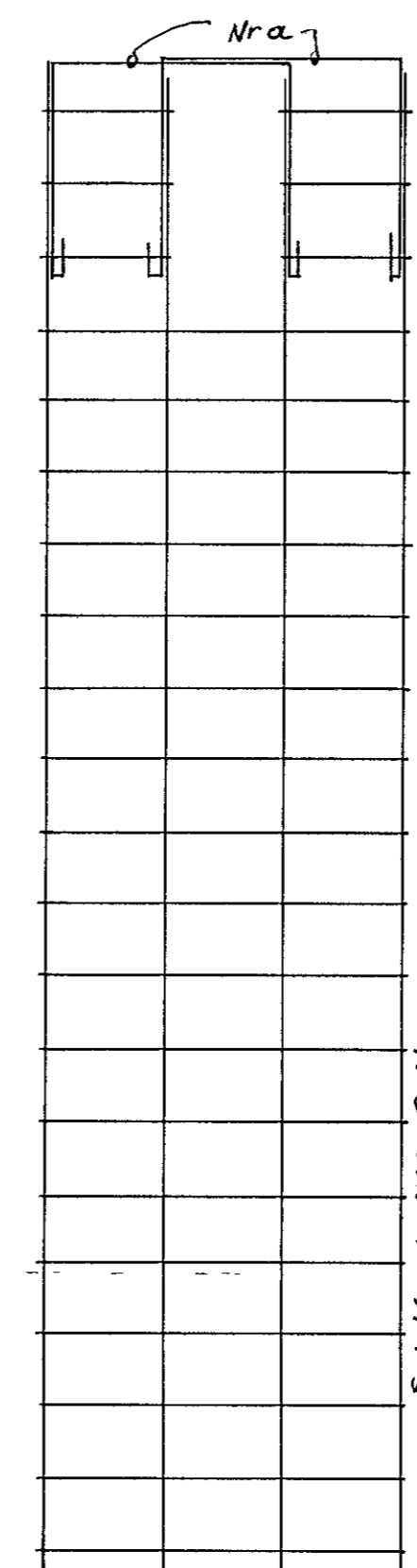
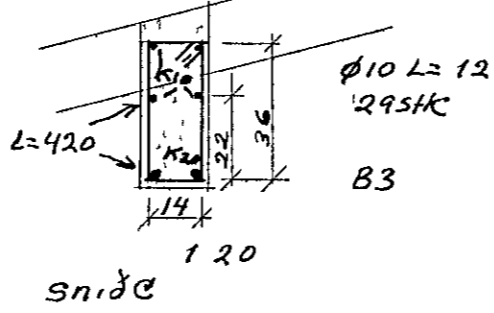
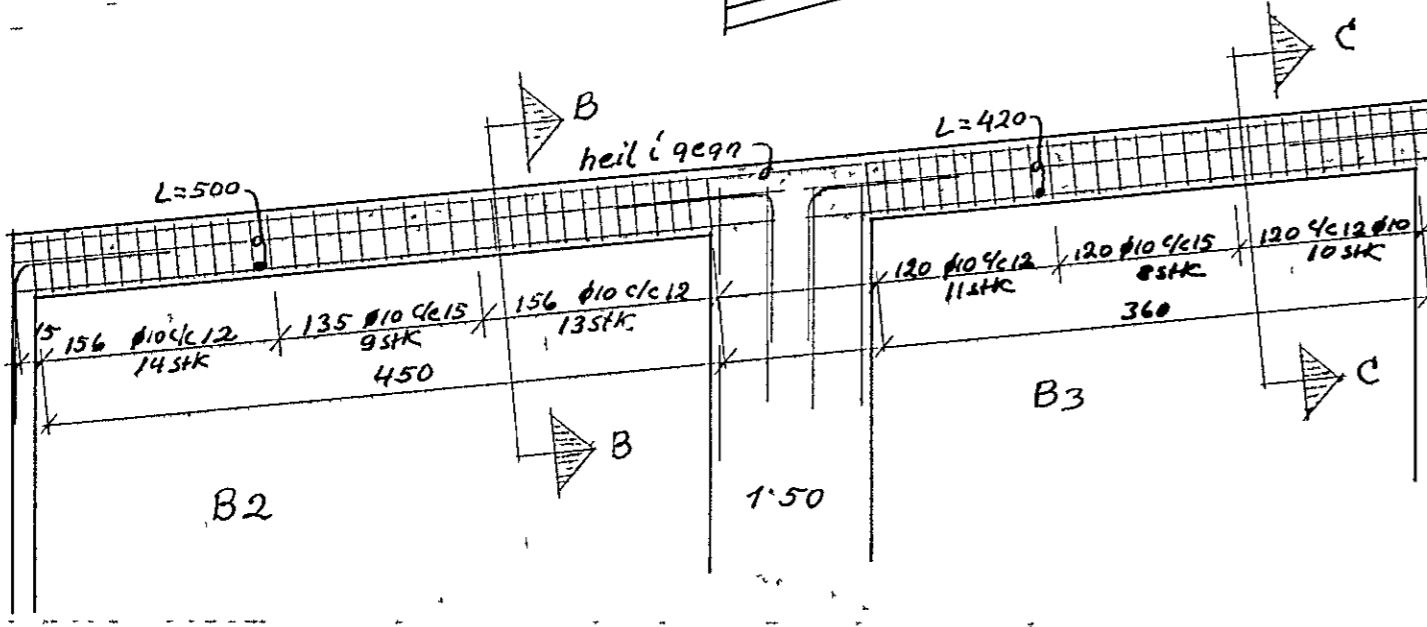
lárétt K10 ϕ 20 L=150

lárétt jarn K10 ϕ 20 L=150

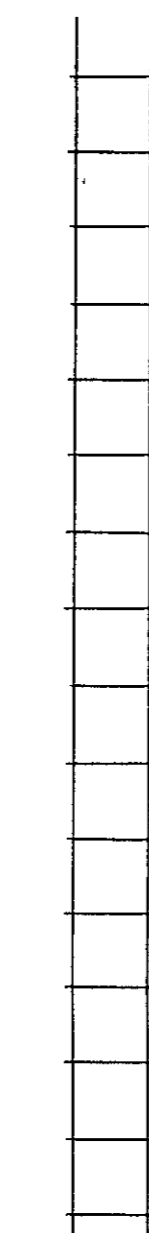


tengijárn milli bita og súlu 3stk i hvorn enda L=200, 18stk.

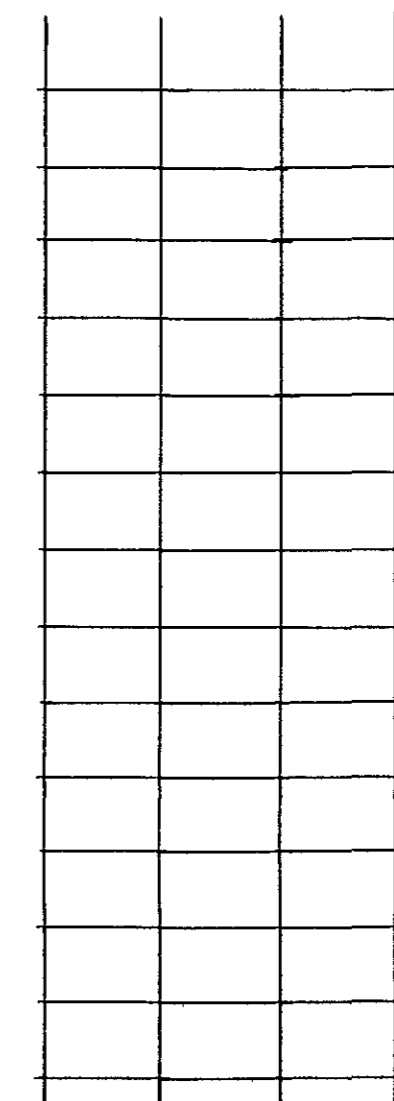
tengijárn # K10 ϕ 20 L=100



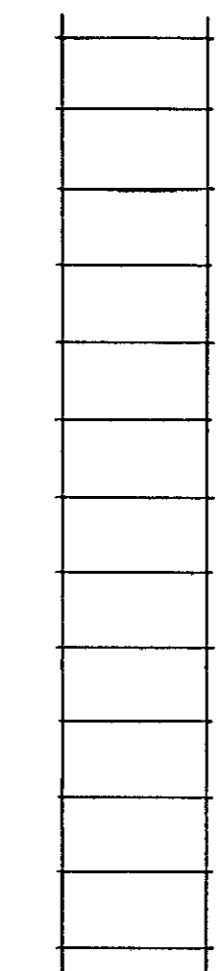
S1: K10, L=415; 8stk
S5: K10, L=395; 8stk



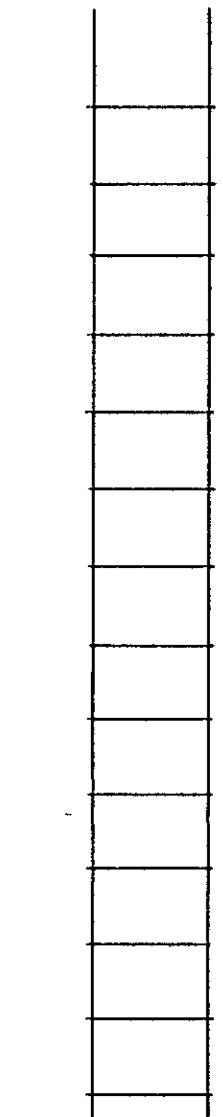
S2: K10, L=320; 4stk
S3: K10, L=230; 4stk



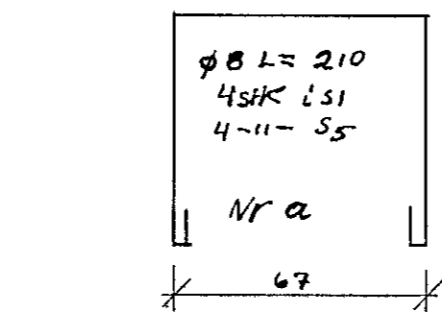
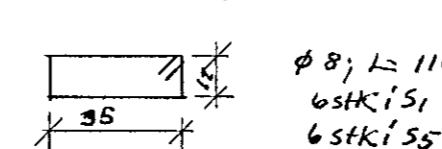
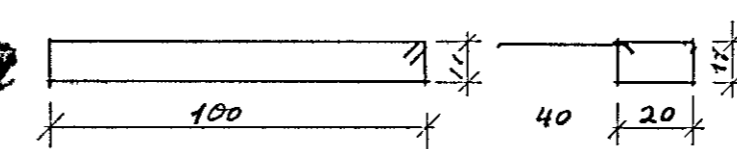
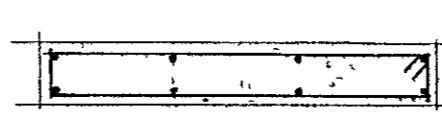
S4: K10, L=285; 8stk



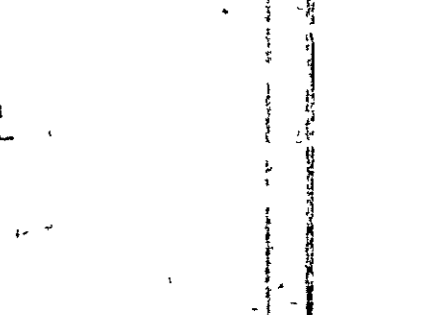
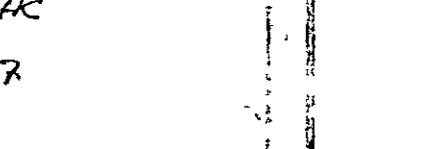
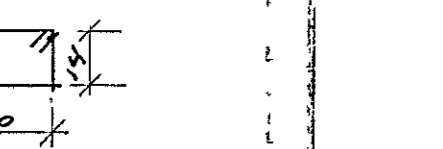
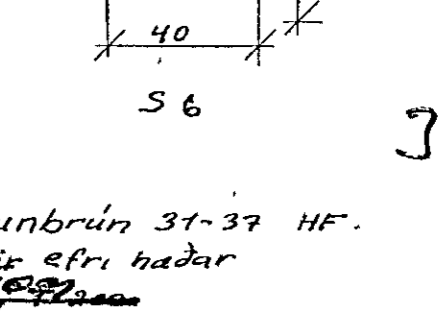
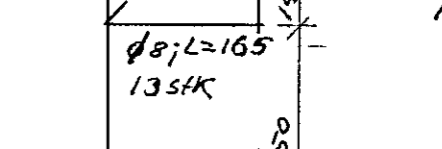
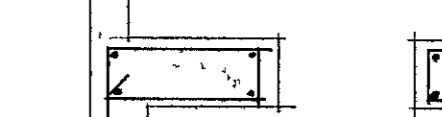
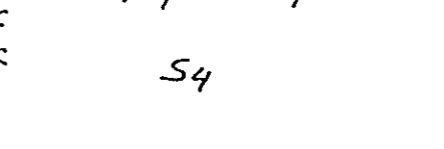
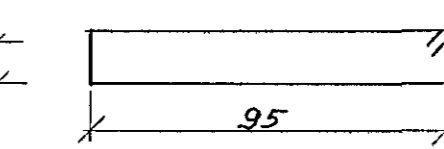
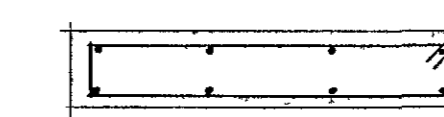
S6: K10, L=250; 4stk



S7: K10, L=290; 4stk



S1 og S5



Hraunbrún 31-37 HF. Veggir efri hæðar. RÚ: OKI '77. Sigurður P. Kári.

37