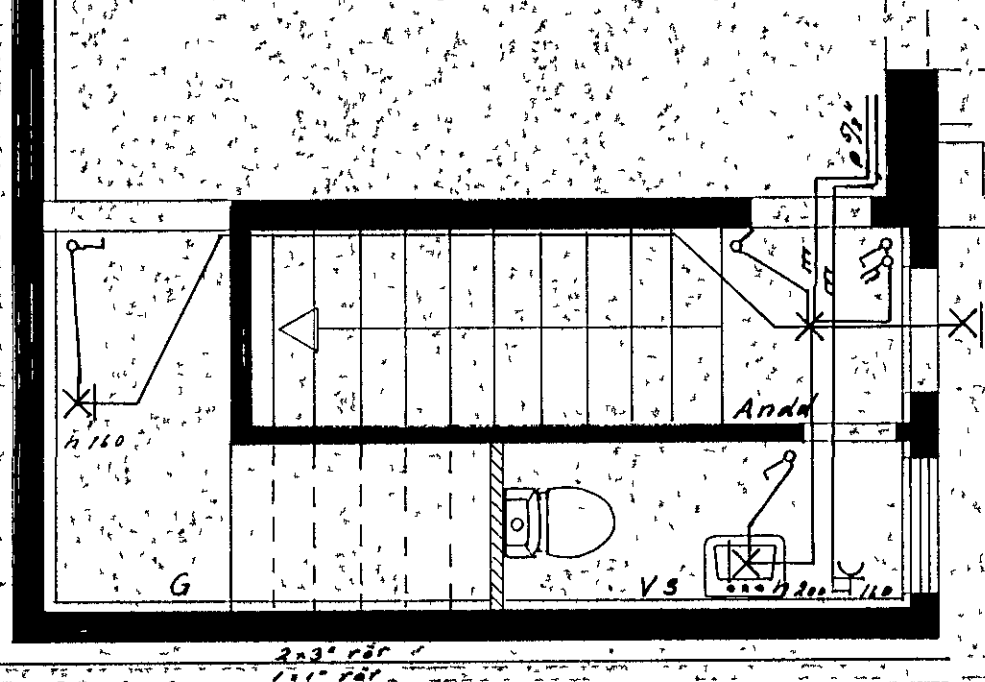
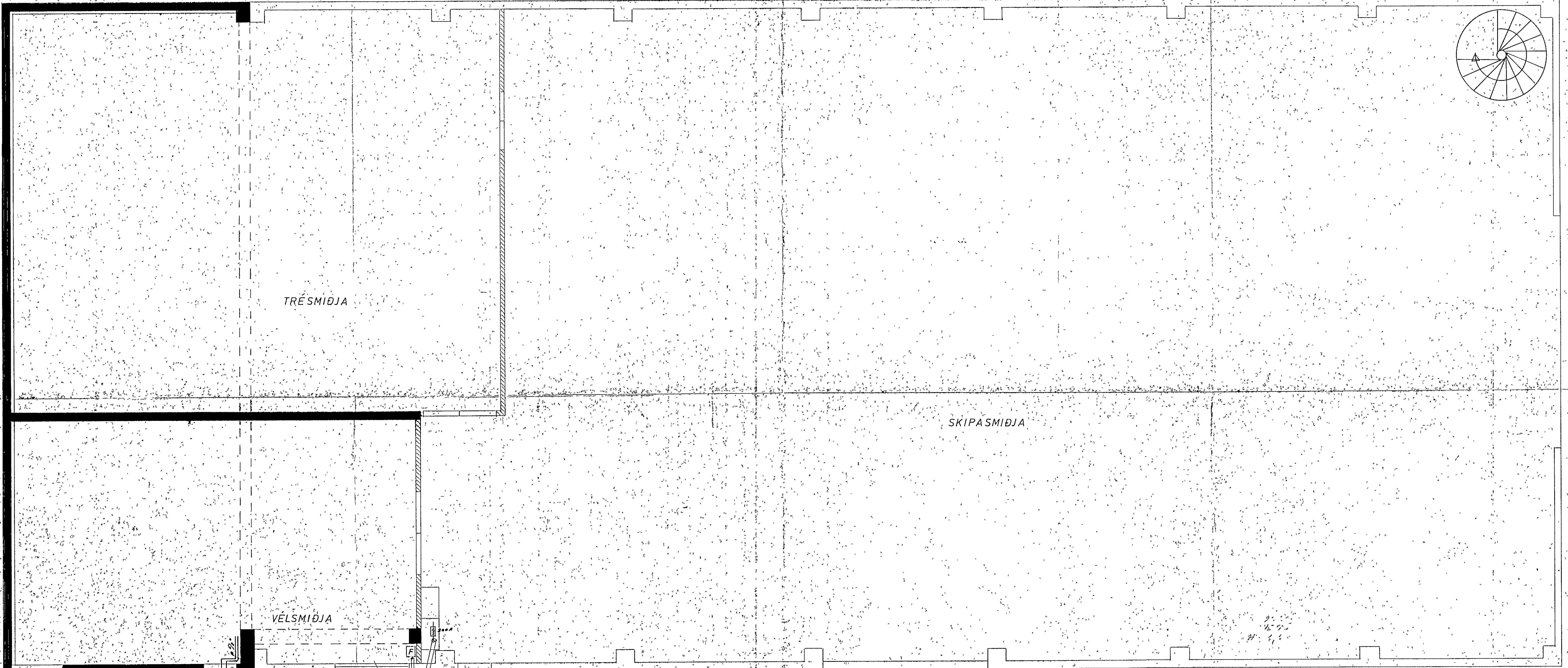
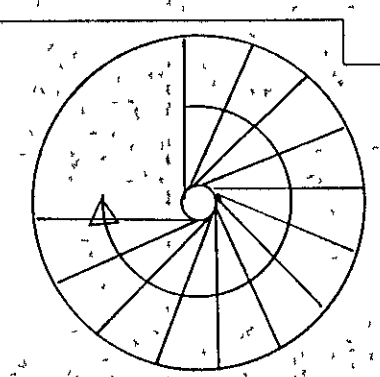


Útdrátt samþykkt 16.08.1988  
 í h. RAFLÖGNUM HAFNAFARNA  
 Hólu Hallgrímur



VÉLSMÍÐJA  
 40-70 cm dýpi

GRUNNMYND I.H.ÉÐAR.

Handwritten notes and calculations, including numbers like 100.000, 0.56, and 13.500.

TEIKNISTÖFA STEFÁNS VÞORSTEINSSONAR		
ARNARHRAUNI 36 SÍMI 52136		
	HVALEÝRARBRAUT 28.	H T S
	BÁSAR H.F	M
	RAFLÖGN	D