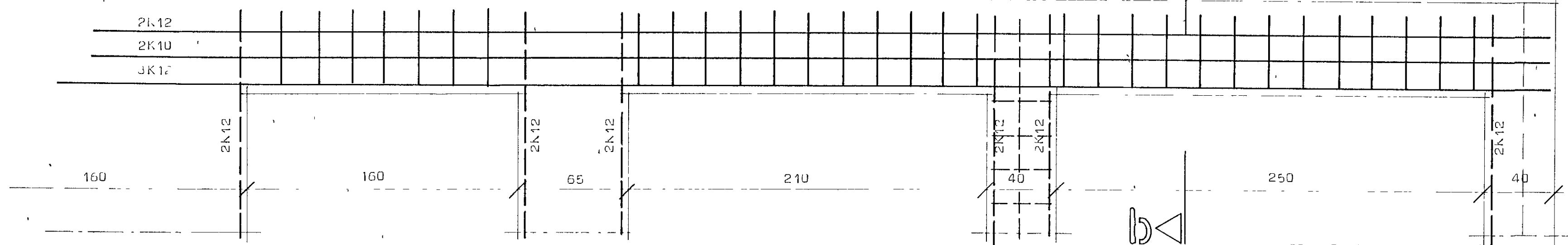
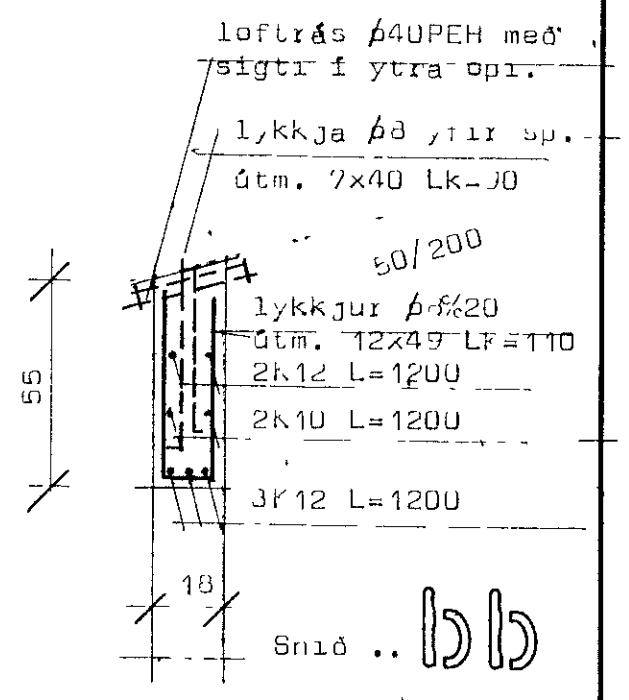


Hörgsholt 21 Hafnarfirði



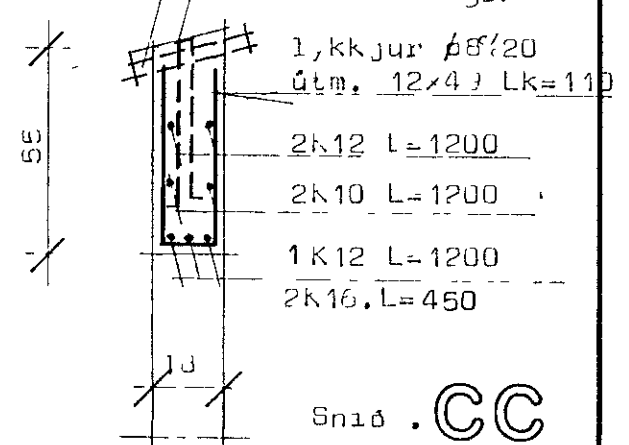
Löðr. 6k12.
Lykkjur $\phi 8/20$
Útm: 12x34, Lk=10h.

B21

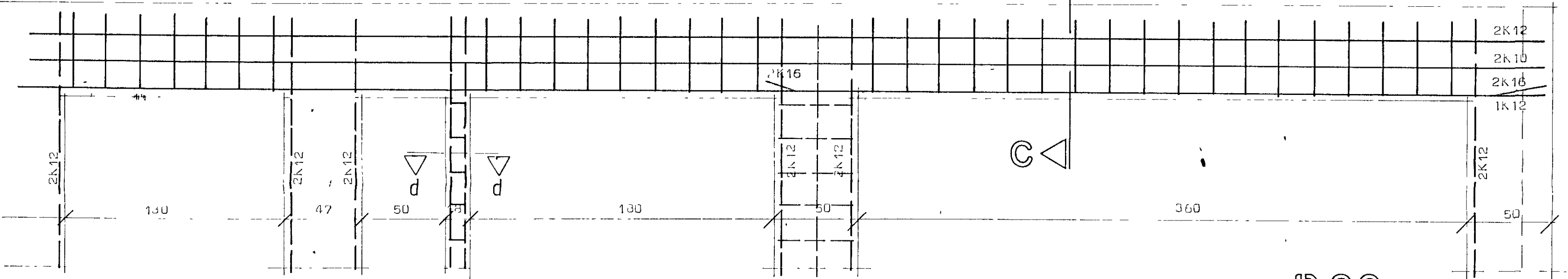


Löðrás $\phi 40$ PEH með sigtri í ytra opi.

1 lykkja $\phi 8$ yfir sp. útm. 7x40 Lk=30



Snúð . CC



Löðrás 4k10
Lykkjur $\phi 8/20$ útm. 12x12 Lk=60

Snúð ... dd

Löðrás $\phi 12$.
Lykkjur $\phi 8/20$
útm: 12.14, Lk=125.

B22

Festijárn f. handrið.

Sjá sérteikningu.

K10/15 L=400

K10/25

37,94

K10/25

K10/50 á gaffli

K10/40 á langlið.

170

$\phi 8/20$ útm 12x30 Lk=210

30,00

18

Lykkjur $\phi 8/20$ útm. 12x55

37,16 L=600

24

56

20

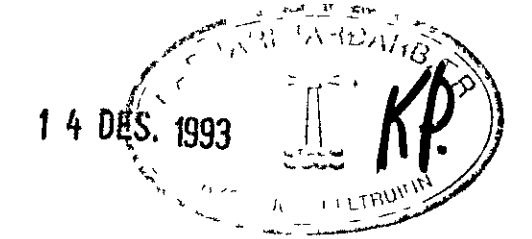
18

52

18

Snúðing í svaðir Mk 1:20

Sjá blað nr 2,02.1



STADALHÚS
TEIKNISTOFA SÍÐUMÚLA 31 SÍMI: 813141 FAX: 813149

VERKEFNI	DAGS.	maðs 1993	VERK NR
Járnþ. Steypa bitar.	MKV.	1:20	33-04
Hörgsholt 21 Hafnarfirði	BLAD NR	2.03.3	