

Hús við Köldukinn nr. 15  
Eig. Harding-Johansen

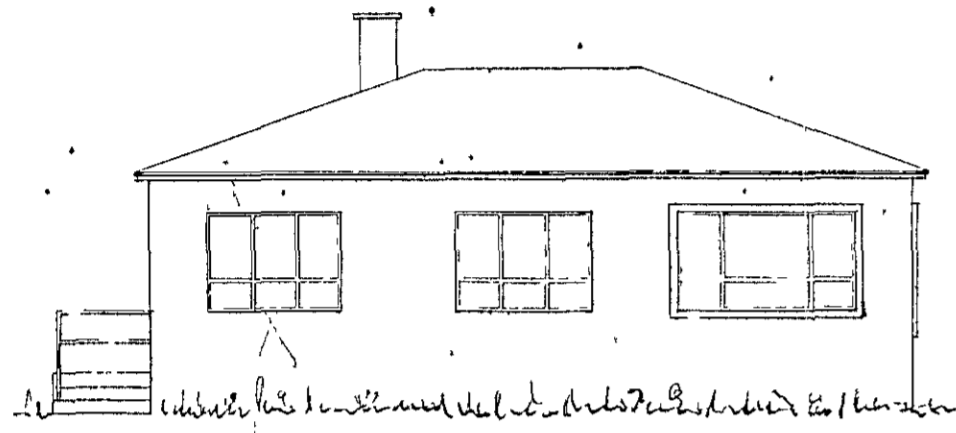
1:100

Afstöðumynd  
1:500

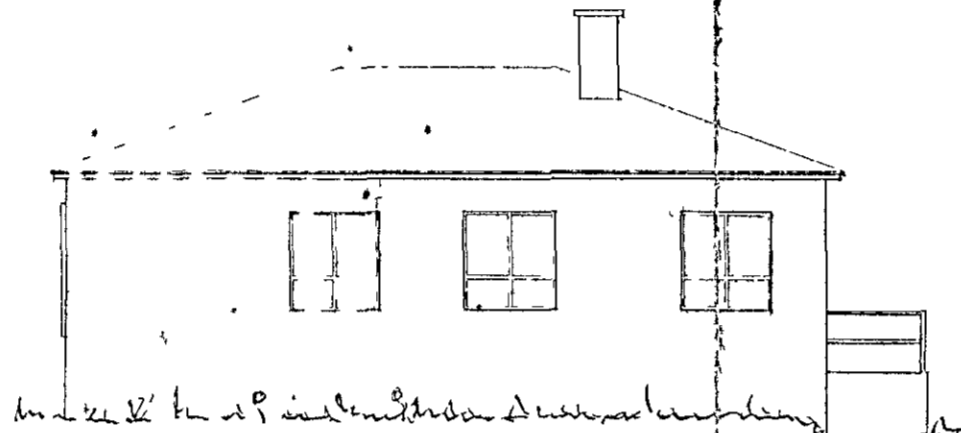
Kaldakinn



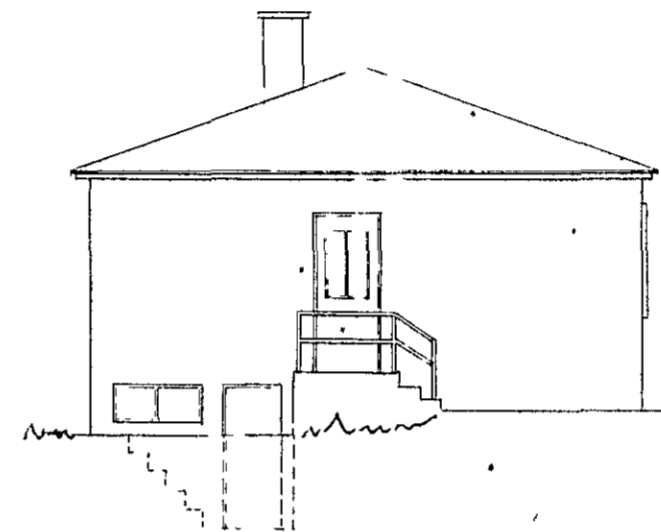
Samþykkt á hinni byggingar-  
nefnd 17. 8. 1953  
BYGGINGARNEFND  
HAFNARFIRÐI  
S. Sigurðsson



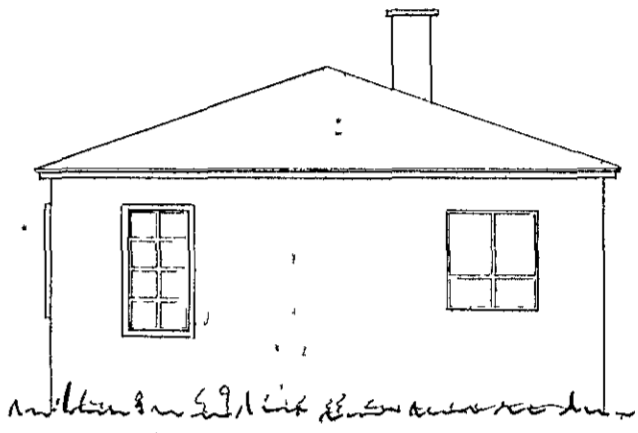
Súðvestur



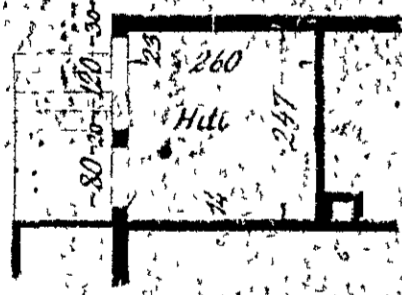
Norðaustur



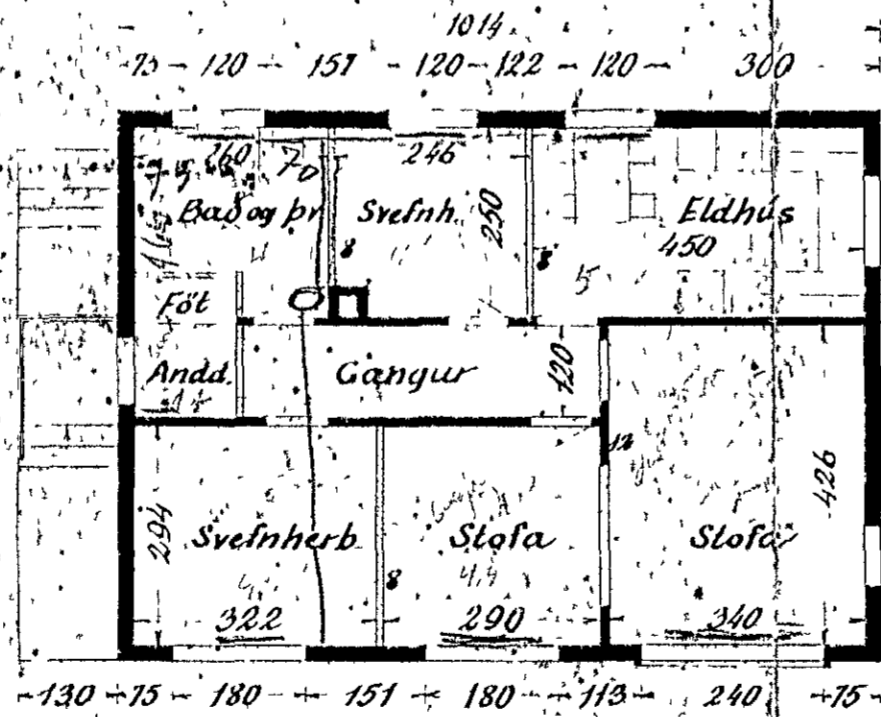
Norðvestur



Súðaustur



Kjallari



Hæð

23.014  
500 Byggingarmarkfelas Ríkisv. 115

141.90

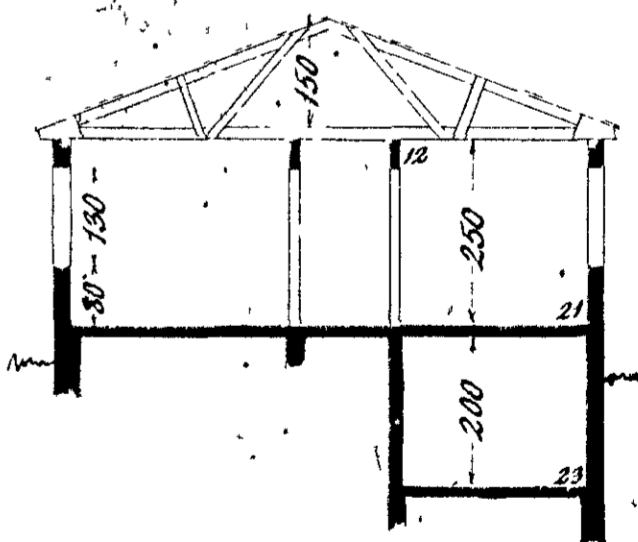
23014  
500  
115070  
17507  
426  
340  
000  
1704  
1278  
144840

16 JAN 1956

06511  
18 JAN 1956

afnámni  
eiga að vera 60 em á höf

8,53  
14,484  
23014



Þverskurður

Hafnarfirði í júlí '53  
Sig. f. Ólafsson