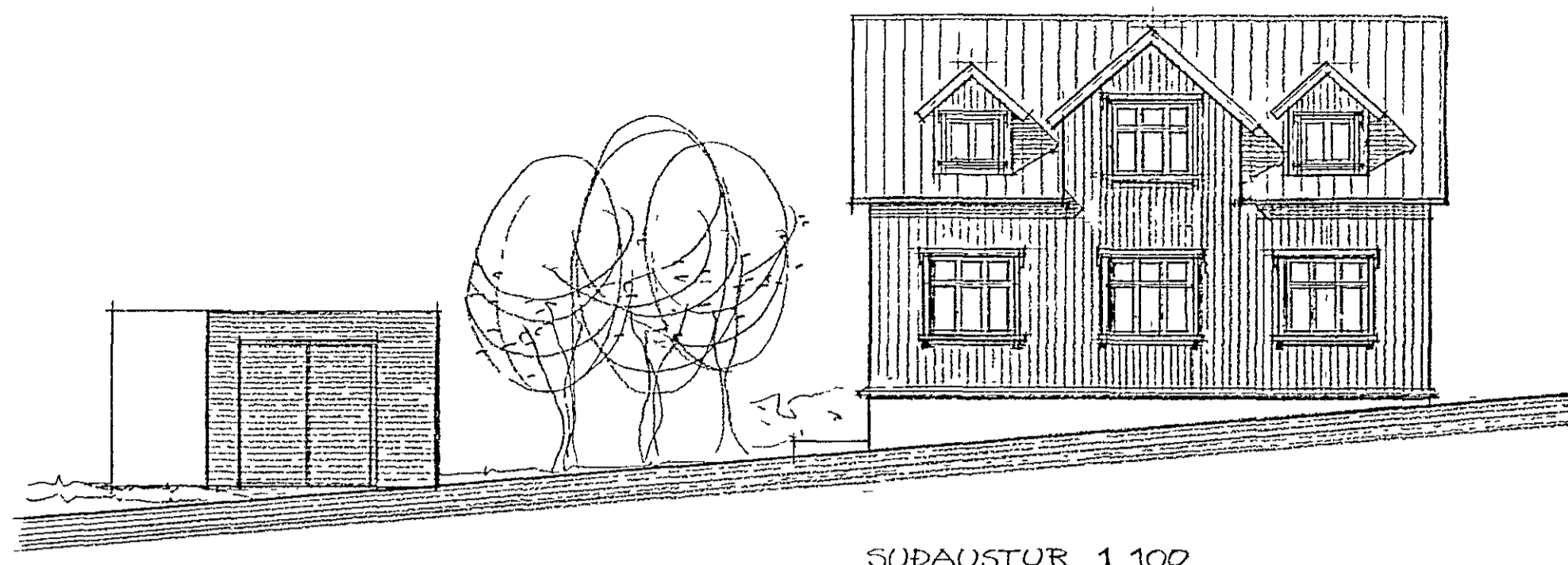
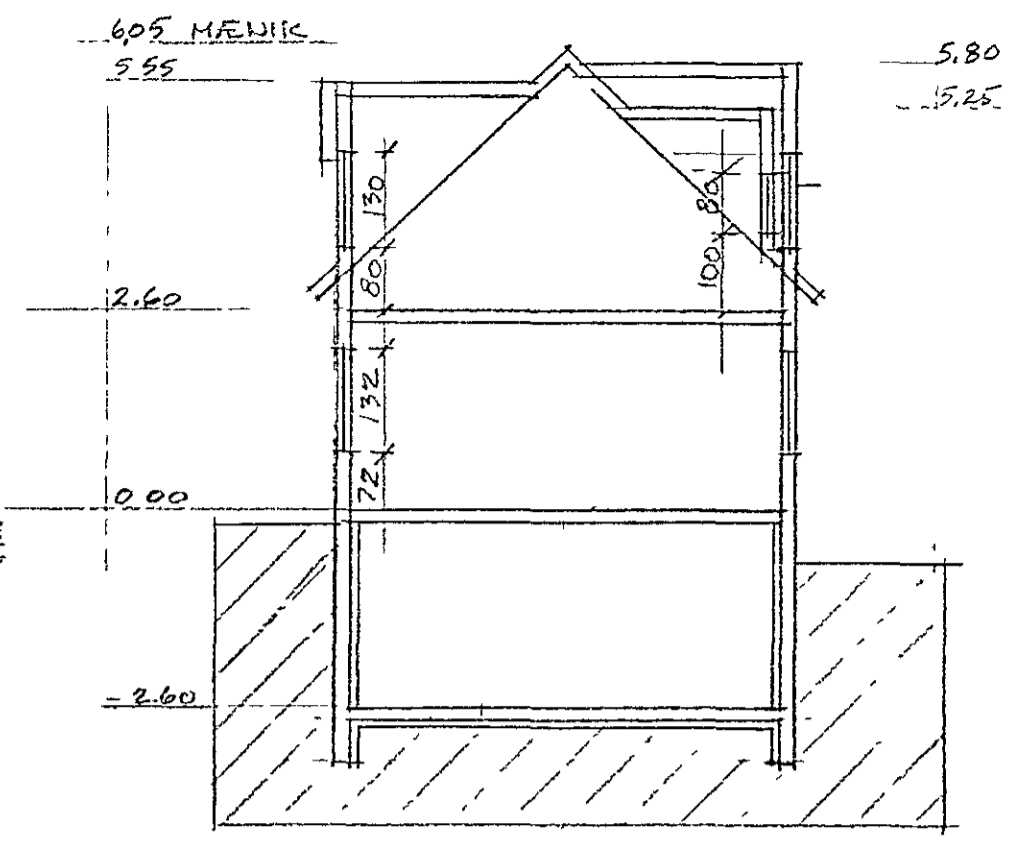


21/1 '88 Falla 6
EA



SUDAUSTUR 1:100



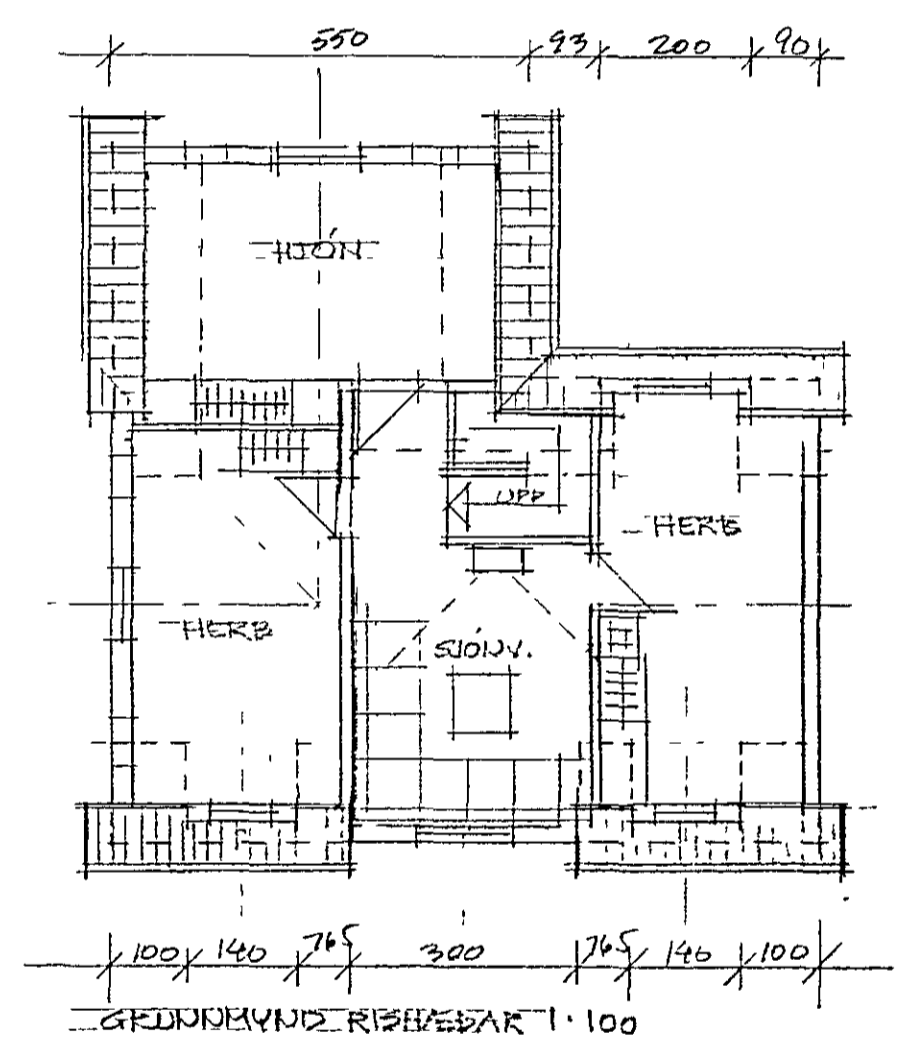
SNITT 1:100



SUDVESTUR

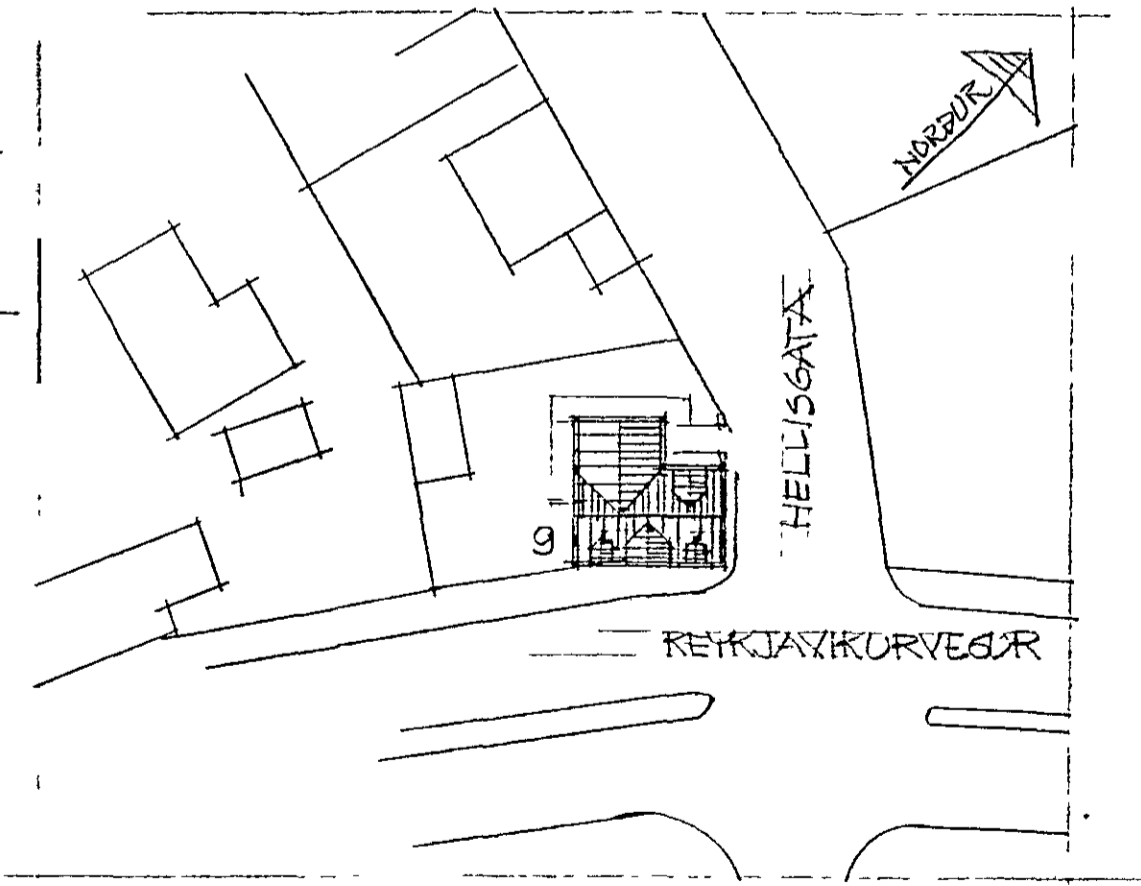


NORDEVSTUR

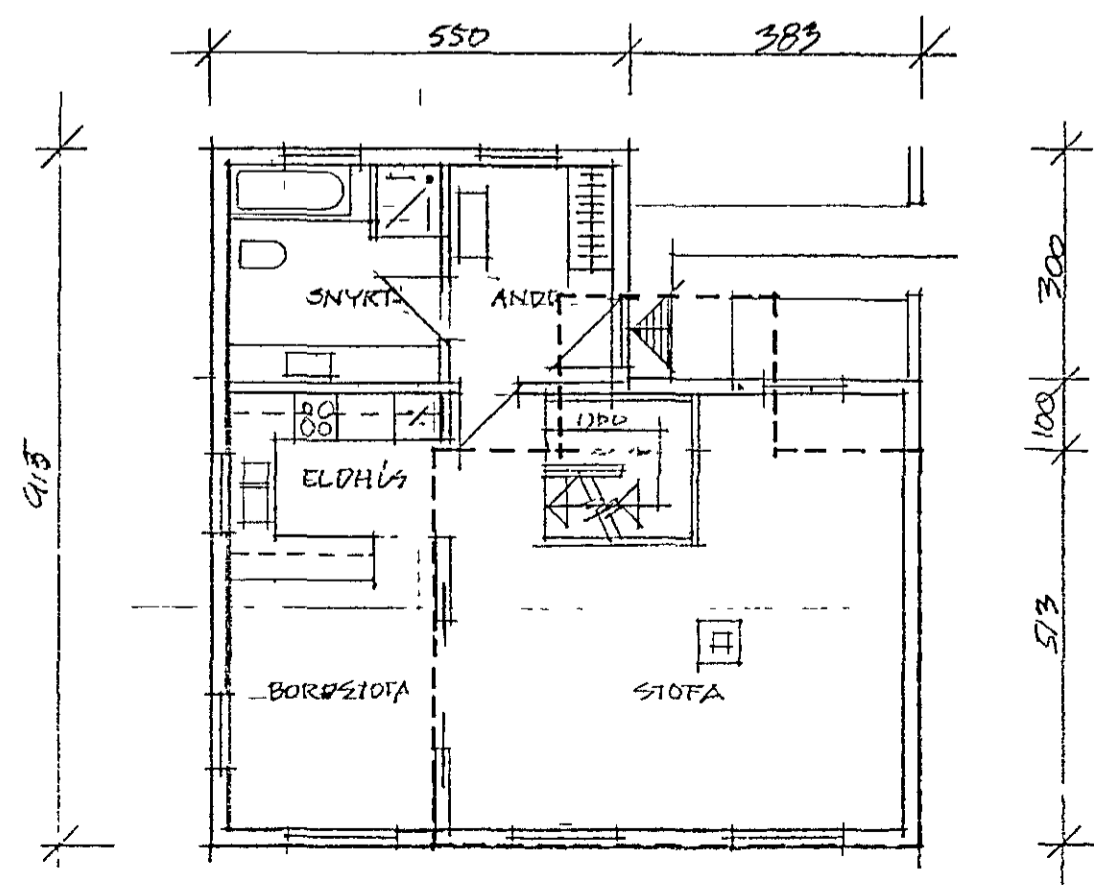


GRUNNMYND RISEÐAF 1:100

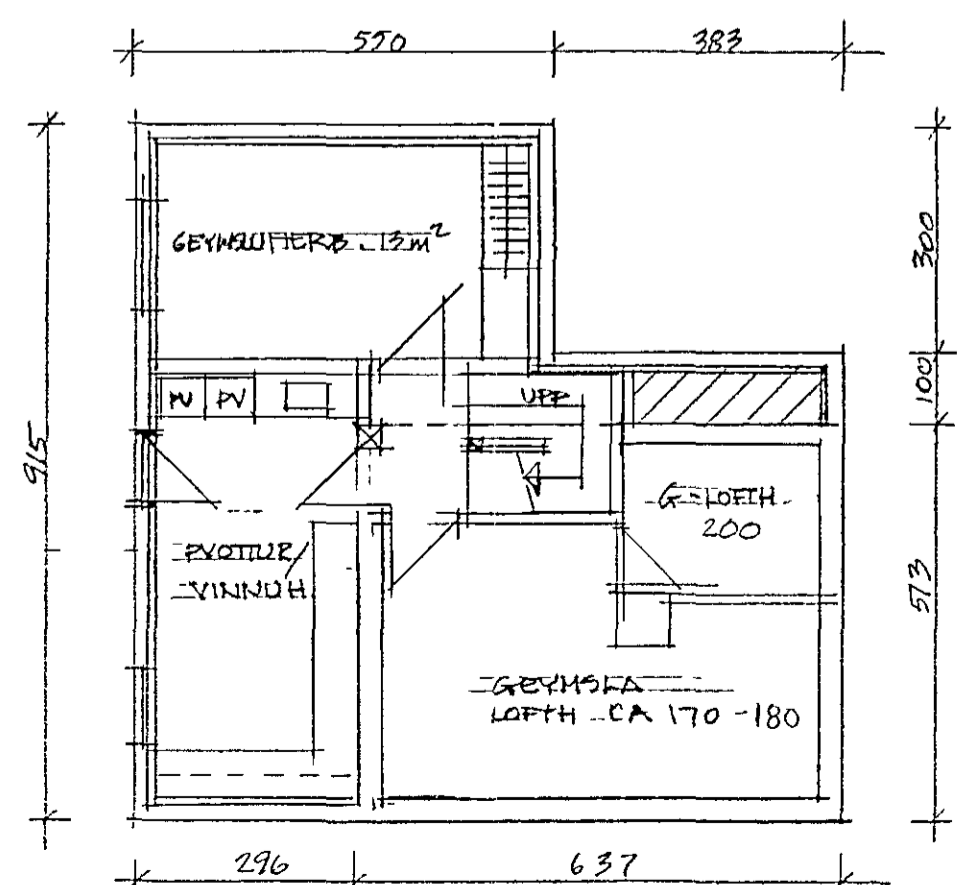
STÆRÐIR:
 LÖÐ 285 m²
 HÚS 1292 m²
 ÞILSKÜR 290 m²
 N = 0.94



AFSTÖÐUMYND 1:500



GRUNNMYND HÉÐAF 1:100



GRUNNMYND KJANNAF 1:100

TEIKNISTOFAN SUDURGOTU 14 220 HAFNARFJORDUR
 PALL V BJARNASON ARKITEKT FAI SIMI 54355

REYKJAVÍKURVEGUR 9, HAFNARFIRÐI
 VIÐBYGGING

Páll S. Bjarnason

DAGS	JAN 1988
KVARDI	1:100-1:500
HANNAÐ	P.V.B.
TEIKNAD	A.E.
YFIRF	

204.001