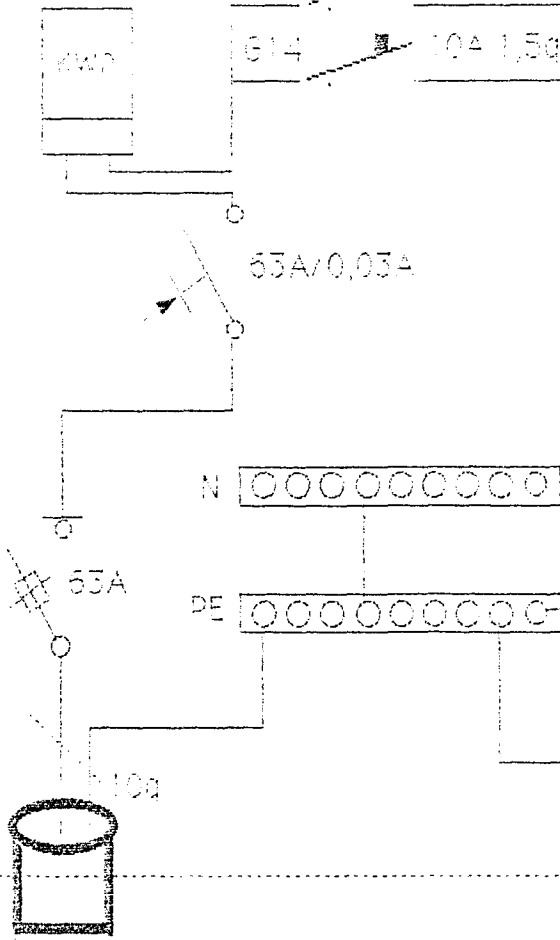
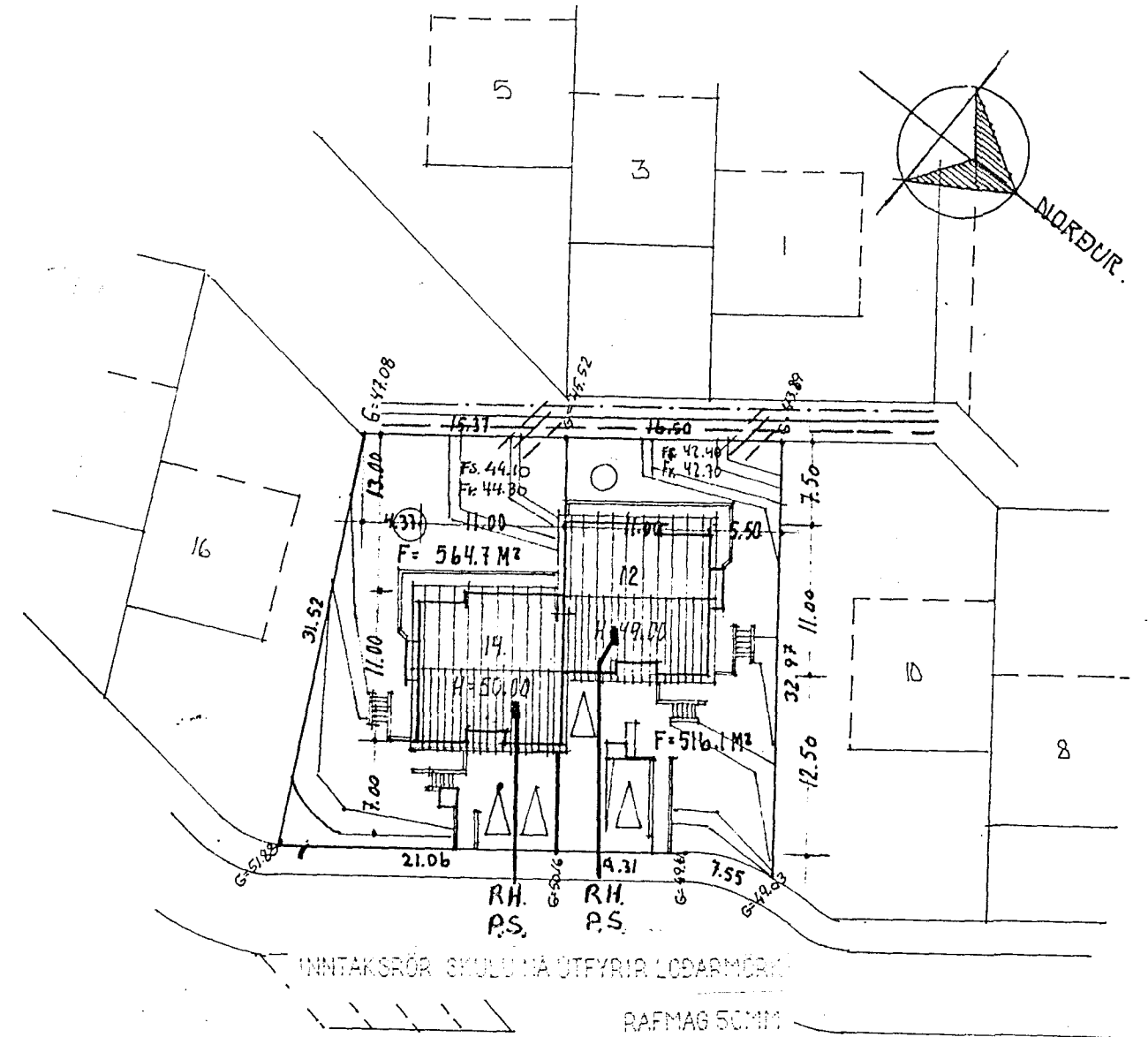


Aðaltáfla

61	15A	4q mo 016	ELDAVEL
62	16A	1,5q mo 016	TENGLAR ELDHÚSI
63	10A	1,5q mo 016	STOFA
64	10A	1,5q mo 016	ELDHÚS, BORDSTOFA
65	16A	1,5q mo 016	TENGIL ÞVOTTAHERB
66	16A	1,5q mo 016	TENGIL ÞVOTTAHERB
67	10A	1,5q mo 016	ANDD, HERB, YS
68	16A	1,5q mo 016	UPPÞVOTTAY
69	16A	1,5q mo 016	TENGLAR BÍLGEYMSLU
610	10A	1,5q mo 016	BÍLGEYMSLA
611	10A	1,5q mo 016	HERB, BAÐ
612	10A	1,5q mo 016	GANGUR, ÞVOTTAHERB
613	10A	1,5q mo 016	HJÓNAHERB, SJÓNYARPSH
614	10A	1,5q mo 016	FJÓLSK, FÖNDUR



50MM RÖR



AFSTÖÐUMYND M.1: 500.

INNINTAKSRÖR SKULU HÁ ÚTFYRIR LODARMÖRK
 RAFMAG 50MM
 SÍMI 50MM
 LOFTNET 40MM

TEIKNAD <i>Jónas Stef</i>	DAGS 200390
JÓNAS STEFÁNSSON	
SÍMI-VINNU 651993-HEIMA- 53907	
<i>Klukkuberg</i>	
BREYTT	