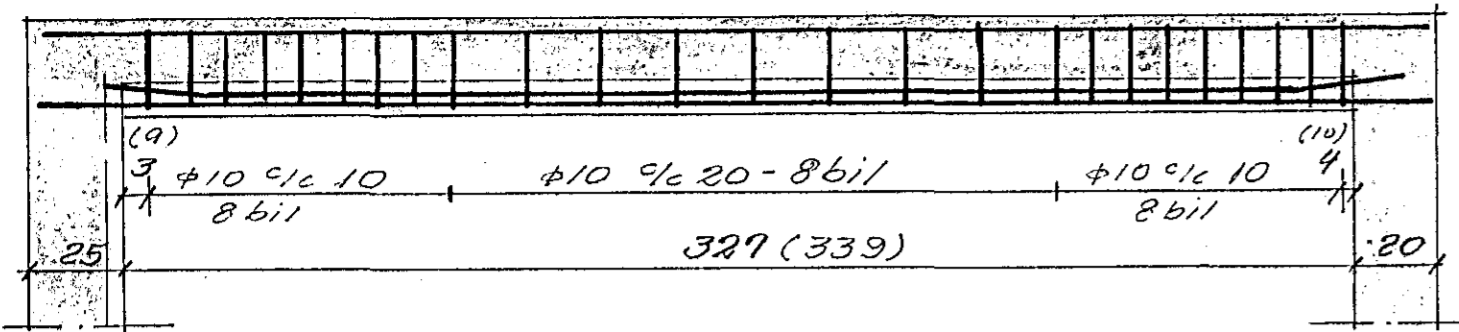


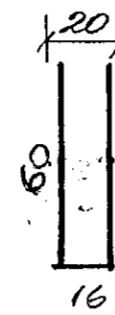
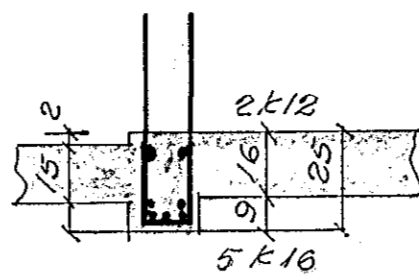
B1.1; B1.1 B2.1 (Bj. 2 svigarnal gilda)



2k12 L= 360 (380)

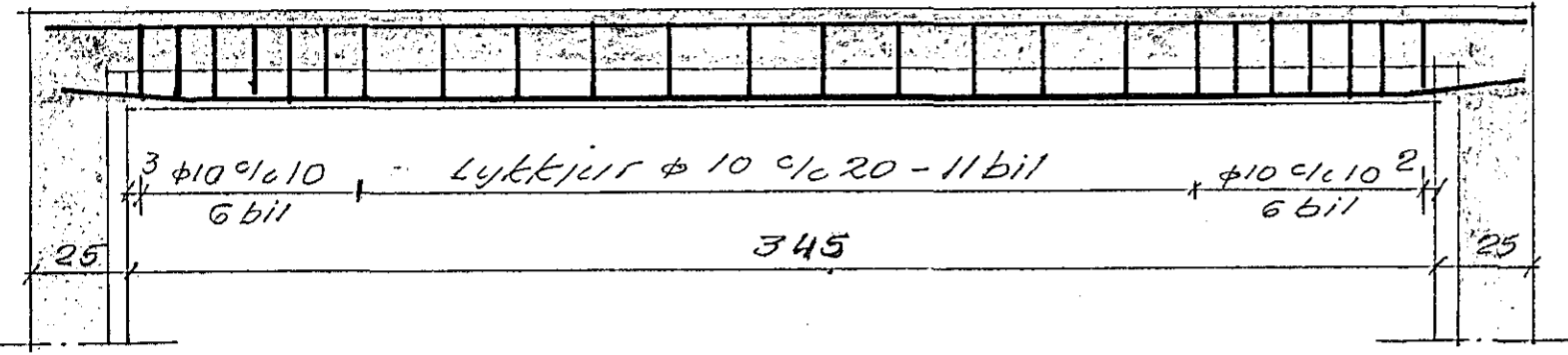
2k16 L= 300 (320)

3k16 L= 360 (380)



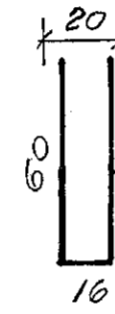
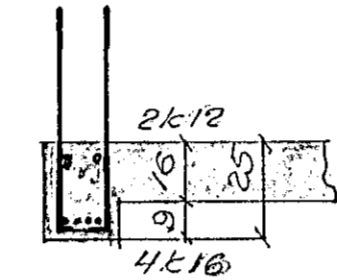
φ10 c/c 20 (eða 1c)  
l=136 - 25 stk.

B1.2; B2.2 i B3.2



2k12 L= 385

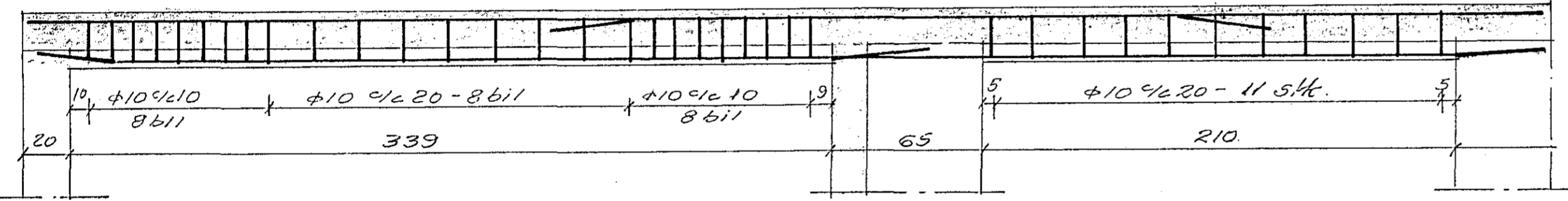
4k16 L= 385



Lykkjur φ10 c/c 20 (eða 1c)  
l=136 - 24 stk.

B1.4; B2.4

B1.3; B2.3

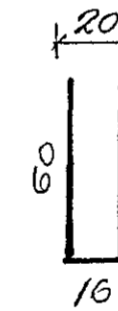
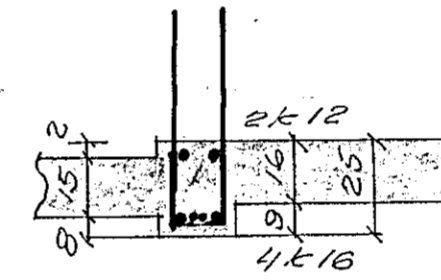


2k12 L= 690

2k16 L= 380

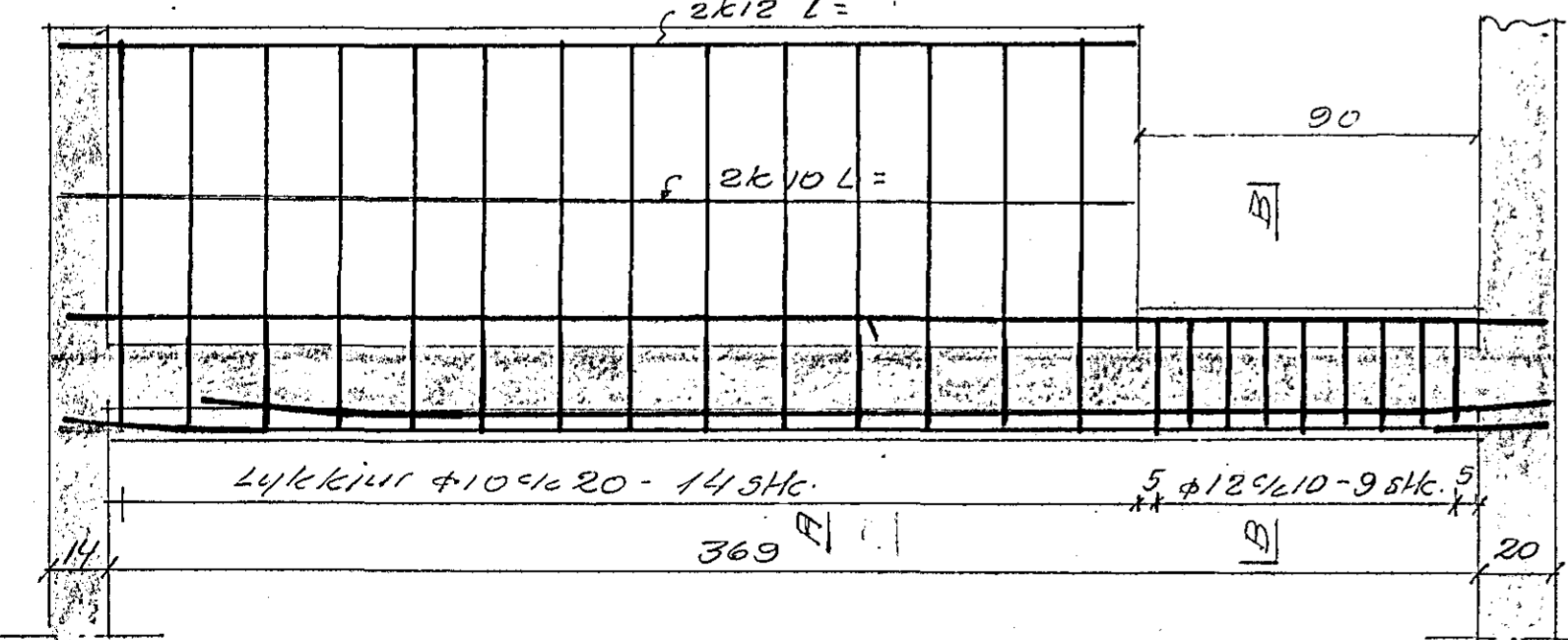
2k16 L= 300

2k16 L= 690



Lykkjur φ10 c/c 20 (eða 1c)  
l=136 - 36 stk.

B1.5; B2.5



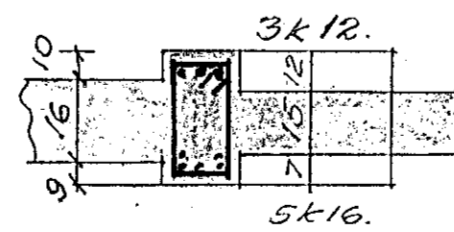
2k12 l= 395

1k12 l= 180

3k16 l= 395

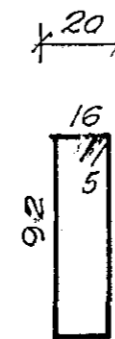
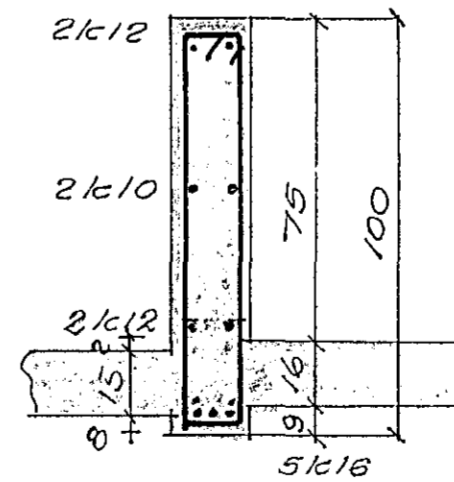
2k16 l= 360

Snid B-B.



Lykkjur:  
φ12 c/c 10  
l=119 - 9 stk.

Snid A-A



Lykkjur  
φ10 c/c 20  
l=226 - 14 stk.

NB.  
þar sem Lykkjur í bitum lenda í  
dyraopum, þengjast þær í etri brúna  
plötu.

Endi á k16 30.5

Benedikt B. Sigurdsson  
verkt.

Stéttahraun nr. 29

M.	1:20	Jámbent steypa.
D.	júni 68	Bitar.
Nr.	3. bl.	Þun. B. Sigurdsson

