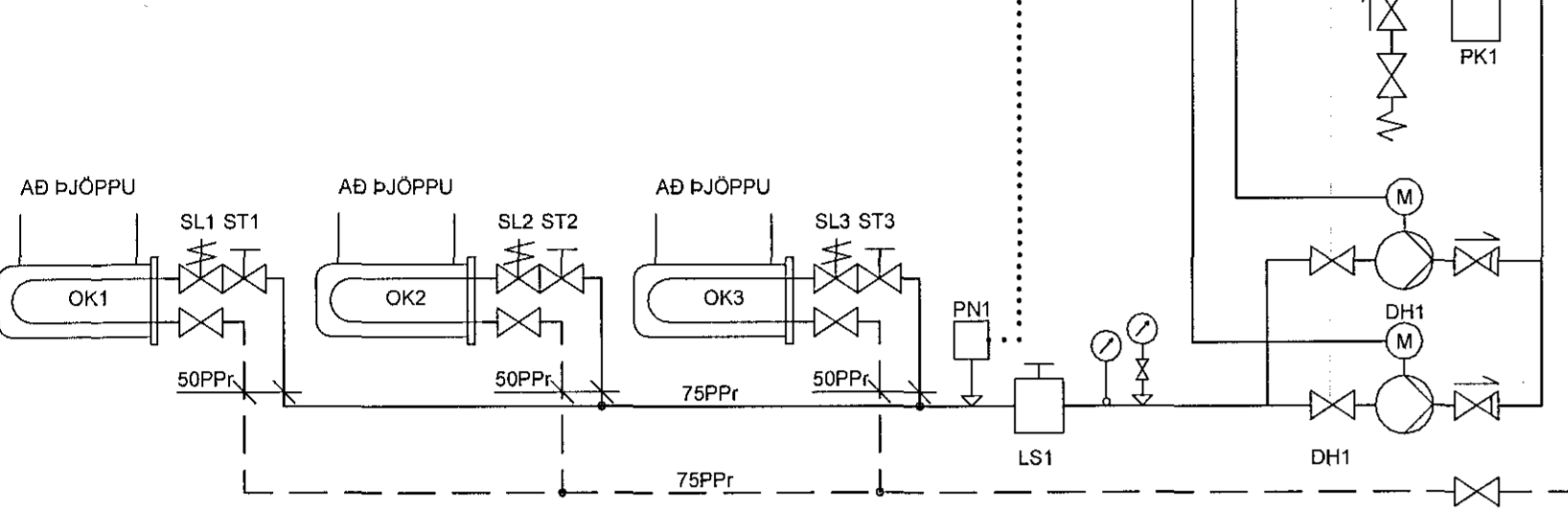


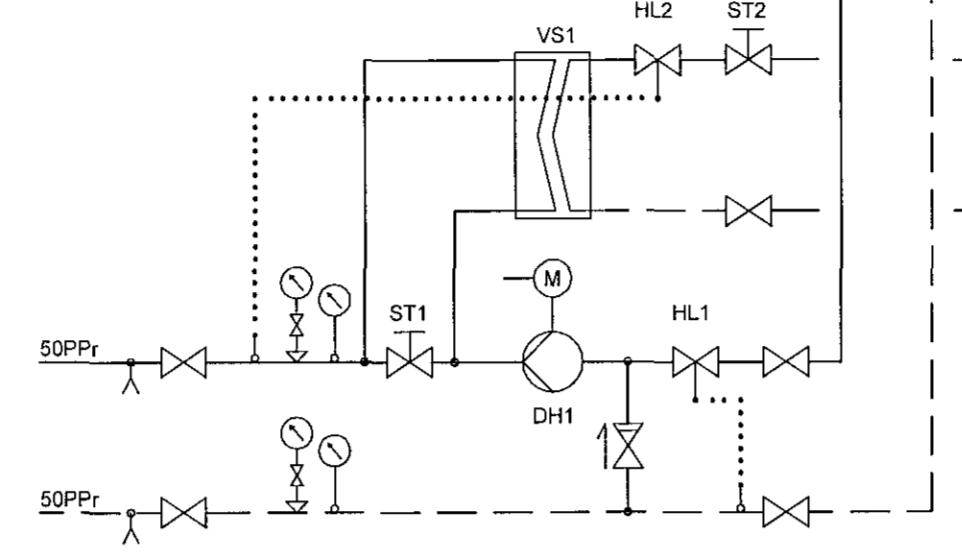
DI	
DO	
AI	
AO	

STYRIKERFI (FRYSTIKERFIS)

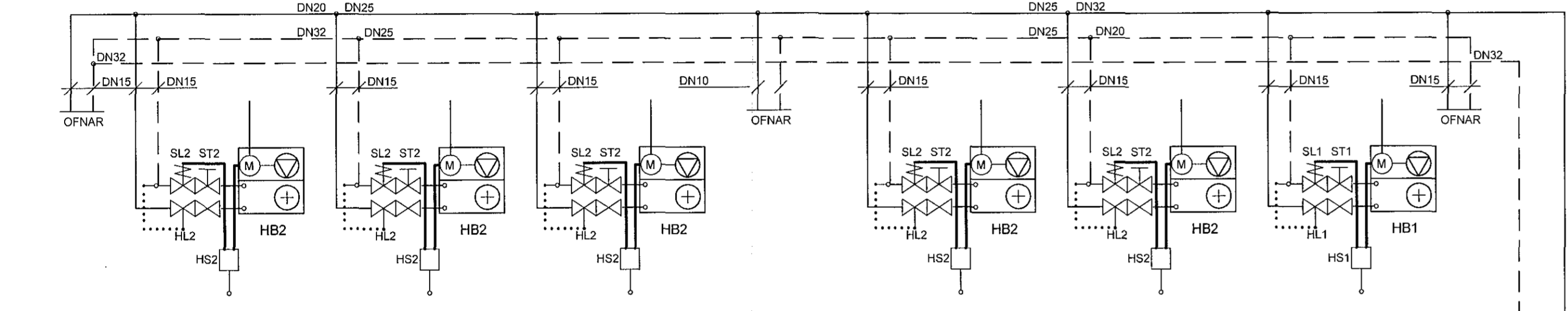
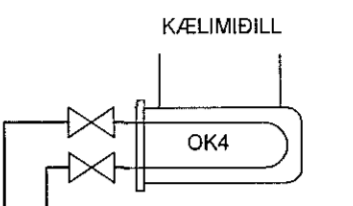
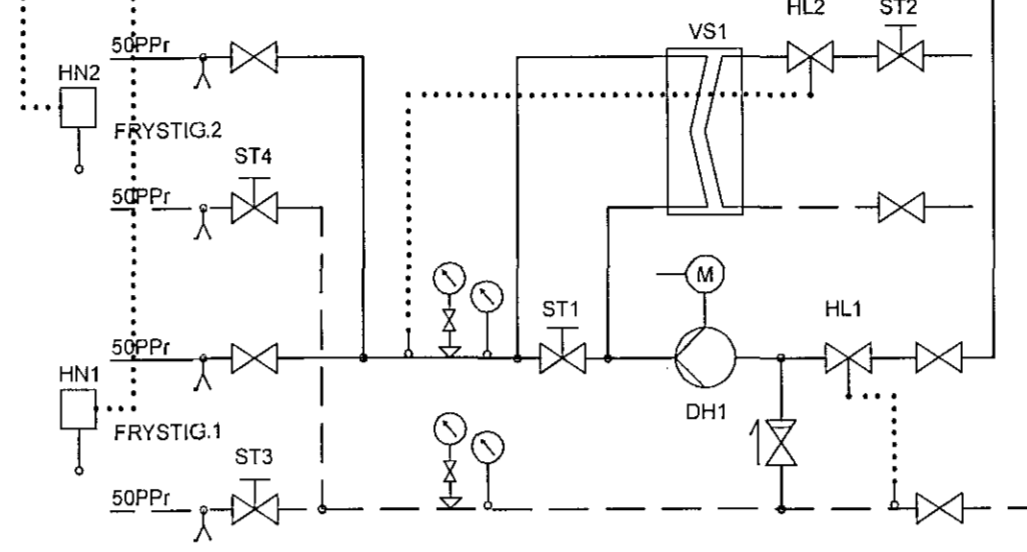
OLUKÆLING
KERFI 42



GÖLFHITI FORRYMI
KERFI 43



GÖLFHITI FRYSTIGEYMSLU
KERFI 44

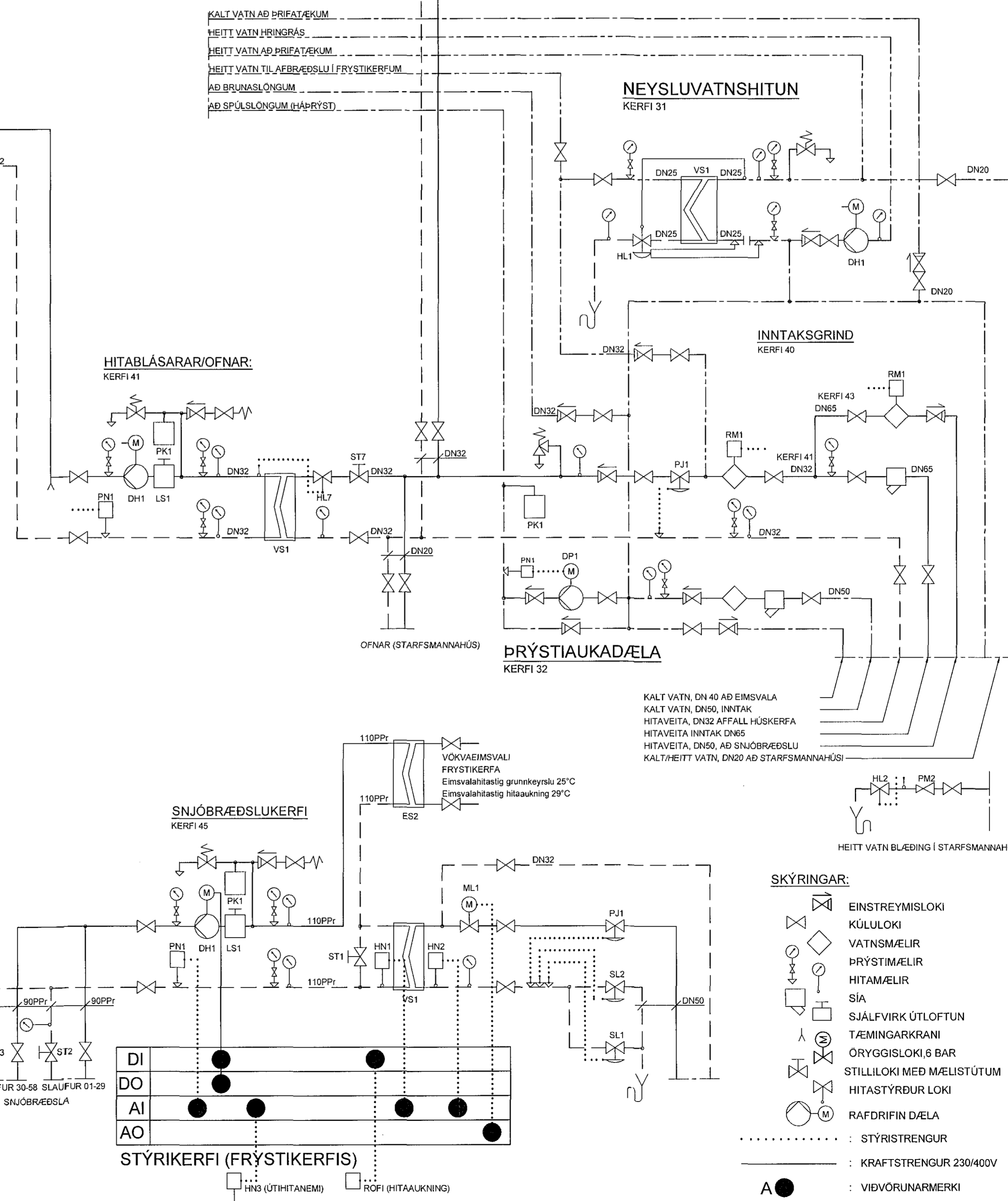


TÆKJALISTI:

NR:	TÆKI:	TÆKNILÝSING:
KERFI 31, UPPHITUN NEYSLUVATNS	VS1	VARMASKIPTIR
	HL1	HITAST. LOKI
	HL2	HITAST. LOKI
	DH1	DÆLA
	ST1	STILLILOKI
KERFI 32, ÞRYSTIAUKING NEYSLUVATNS	DP1	ÞRYSTIAUKADÆLA
	PN1	ÞRYSTUNEMI
	PK1	ÞENSLUKUR
KERFI 40, HITAKERFI, INNTAK	PJ1	ÞRYSTIAUFNARI
KERFI 41, HITAKERFI (LOKAD OFNAR OG HITABLÁSARAR)	DH1	DÆLA
	VS1	VARMASKIPTIR
	LS1	LOFTSKILJA
	PK1	ÞENSLUKER
	HL7	HITAST. LOKI
	ST7	STILLILOKI
	HB1-6	HITABLÁSARI
	HL1-6	HITAST. LOKI
	SL1-6	STILLILOKI
	ST1-6	STILLILOKI
	HL1-6	HITASTILLUR
	PN1	ÞRYSTINEMI
KERFI 42, (OLUKÆLING, GÖLFHITUN)	OK1-3	OLUKÆLAR
	DH1,2	DÆLA
	LS1	LOFTSKILJA
	PK1	ÞENSLUKER
	SL1-3	STILLILOKI
	ST1-3	STILLILOKI
	PN1	ÞRYSTINEMI
KERFI 43, GÖLFHITI FORRYMI	DH1	DÆLA
	HL1	HITAST. LOKI
	ST1	STILLILOKI
	VS1	VARMASKIPTIR
	HL2	HITAST. LOKI
	ST2	STILLILOKI
	OK4	VÖKVAKÆLUR

TÆKJALISTI FRAMH.:

KERFI 44, GÖLFHITI FRYSTIGEYMSLU	DH1	DÆLA	HRINGRÁS, 40% GLYCOL, Q=2,0 l/s VÍÐ 75 kPa, MÓTOR 1x230V
	HL1	HITAST. LOKI	SÁLFRVIRKANDI MÍÐ NEMA Í VATNSRÁS, K _v =20/0,25,0 m ³ /kist, HITASVIÐ -10-40 °C
	ST1	STILLILOKI	DN 40 K _v =19,0-25,0 m ³ /kist, STILLING Q=1,67 l/s
	VS1	VARMASKIPTIR	PLÖTUHITARI, RYDFRITT STÁL, AFKÖST 83,4 kW YFIRSTÆRÐ 20%
	HL2	HITAST. LOKI	HITAVEITA 55/10°C, QP<10 kPa
	ST2	STILLILOKI	HRINGRÁS, 40% GLYCOL 20/65 °C, QP<10 kPa
	ST3-4	STILLILOKI	SÁLFRVIRKANDI MÍÐ NEMA Í VATNSRÁS, K _v =5,0-6,0 m ³ /kist, HITASVIÐ 10-38 °C
	HN1-2	HITANEMI	DN 20 K _v =5,0-7,0 m ³ /kist, STILLING Q=0,33 l/s
			DN 32 K _v =14,0-16,0 m ³ /kist, STILLING Q=1,00 l/s
			Í GÖLFBRUNNI, FJÖLSTÖÐU, 4-20 mA, MÆLISVIÐ -30+30°C
KERFI 45, SNJÖBRÆÐSILA	ES2	EIMSVALI	PLÖTUHITARI, AFKÖST 300-1500 kW, TILHEYRIR FRYSTIKERFI
	DH1	DÆLA	HRINGRÁS, Q=9,24 l/s VÍÐ 120 kPa, MÓTOR 3x400V
	VS1	VARMASKIPTIR	PLÖTUHITARI, RYDFRITT STÁL, AFKÖST 480 kW YFIRSTÆRÐ 20%
			HITAVEITA 75/25°C, QP<10 kPa
			HRINGRÁS 20/65 °C, QP<10 kPa
			DN 100, SÁLFRVIRK ÚTLOFTUN
			RÚMMÁL 100 l, FORÞRYSTINGUR 100 kPa
			DN 25, K _v =5,5-6,5 m ³ /kist, STILLISVIÐ 5-60 kPa, STILLING 40 kPa
			DN 25, K _v =5,5-6,5 m ³ /kist, STILLISVIÐ 5-120 kPa, STILLING 120 kPa
			DN 65 K _v =90-100 m ³ /kist, STILLING Q=6,8 l/s
			DN 50 K _v =50-60 m ³ /kist, STILLING Q=4,82 l/s
			FJÖLSTÖÐU 0-10V, K _v =25-30 m ³ /kist, TILHEYRIR FRYSTIKERFI
			Í VATNSRÁS, FJÖLSTÖÐU, 4-20 mA, MÆLISVIÐ -10+50°C, TILHEYRIR FRYSTIKERFI
			ÚTITANEMI, FJÖLSTÖÐU, 4-20 mA, MÆLISVIÐ -20+30°C, TILHEYRIR FRYSTIKERFI
			FJÖLSTÖÐU, STILLISVIÐ 0-6 bar, LAGÞRYSTIVAKT, STILLING 3,0 bar, TLH. FR.KERFI
	LS1	LOFTSKILJA	
	PK1	ÞENSLUKER	
	PJ2	ÞRYSTIAUFNARI	
	SL1-2	SLAUFULOKAR	
	ST1	STILLILOKI	
	ST2-3	STILLILOKI	
	ML1	MÓTORLOKI	
	HN1-2	HITANEMI	
	HN3	HITANEMI	
	PN1	ÞRYSTINEMI	

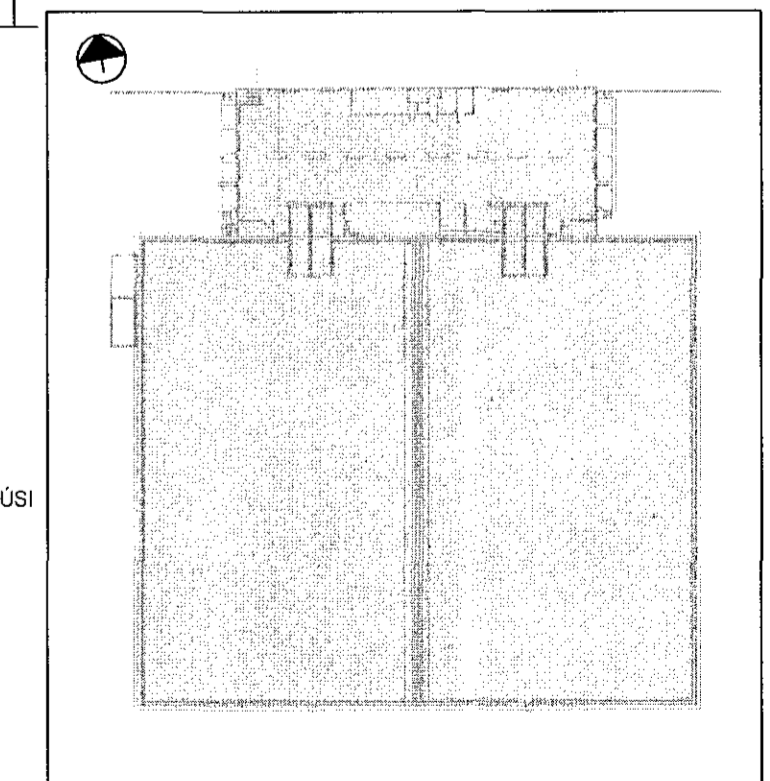


Samþykkt þann
19. maí 2015

Byggingafráttir í Hafnarfirði
Eh. Höfður S. Gunnlaugsson

HÖNNUNARSTIG: VERKTEIKNING

14.04.2015 Verkteikning 40P22 (jarlægj) spenna á skákun KH PH
BR. DAGS. BREYTING REKNI TEKNI



VSÓ RÁÐGJÖF
BORGARTÚN 20, 106 REYKJAVÍK, Sími 595 9000, SMÍÐERF 595 9010, NETFANG vs@vs.is

ÖSEYRARBRAUT 22
FRYSTIGEYMSLA EIMSKIPS

FRIFA- HITAKERFI
KERFISMYND, KERFI XXX

YFIRFARÐ
SAMÞYKKT
KT
30087/2009

REYKJAVÍK 06.03.2015

15104 L1-K-1