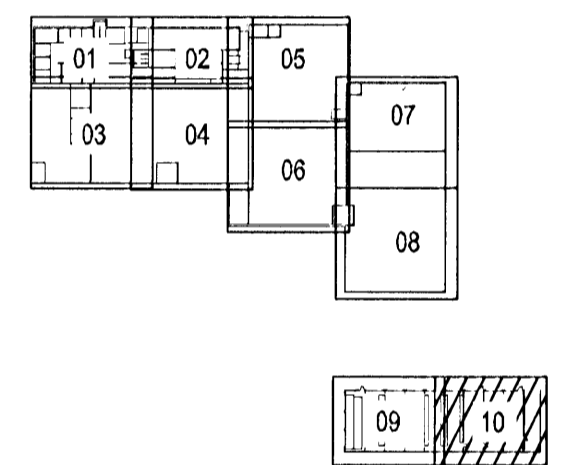


16/3/09

Hönnuður:  
ARI, HAS  
Yfirfarð:  
---  
Samþykkt: Davíð Sölvason kt: 100356-3339

Breytingar:  
B1: 12.12.2008 Rennuhit  
B2 12.02.2009 Reyndartekning

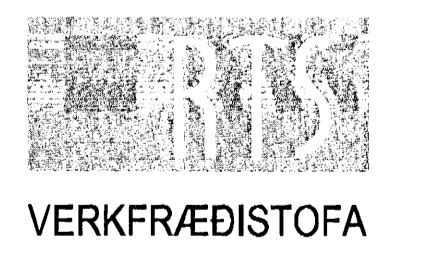
Lykilmynd



Aðalhönnuður:  
[Signature]

Héðinn  
Gjáhella 4  
221 Hafnarfjörður

Raflagnir í rennur, rafstiga og gólf  
Siberia 1.Hæð  
Mkv: 1:50



Grensásvegur 3  
108 Reykjavík  
Sími 520 9900  
Fax 520 9901  
www.rts.is



1 Tenglastöð; 4x16A, 2x16A-3f., 1x32A-3f.

32-2166-1-  
03.04.2008 011710 B2