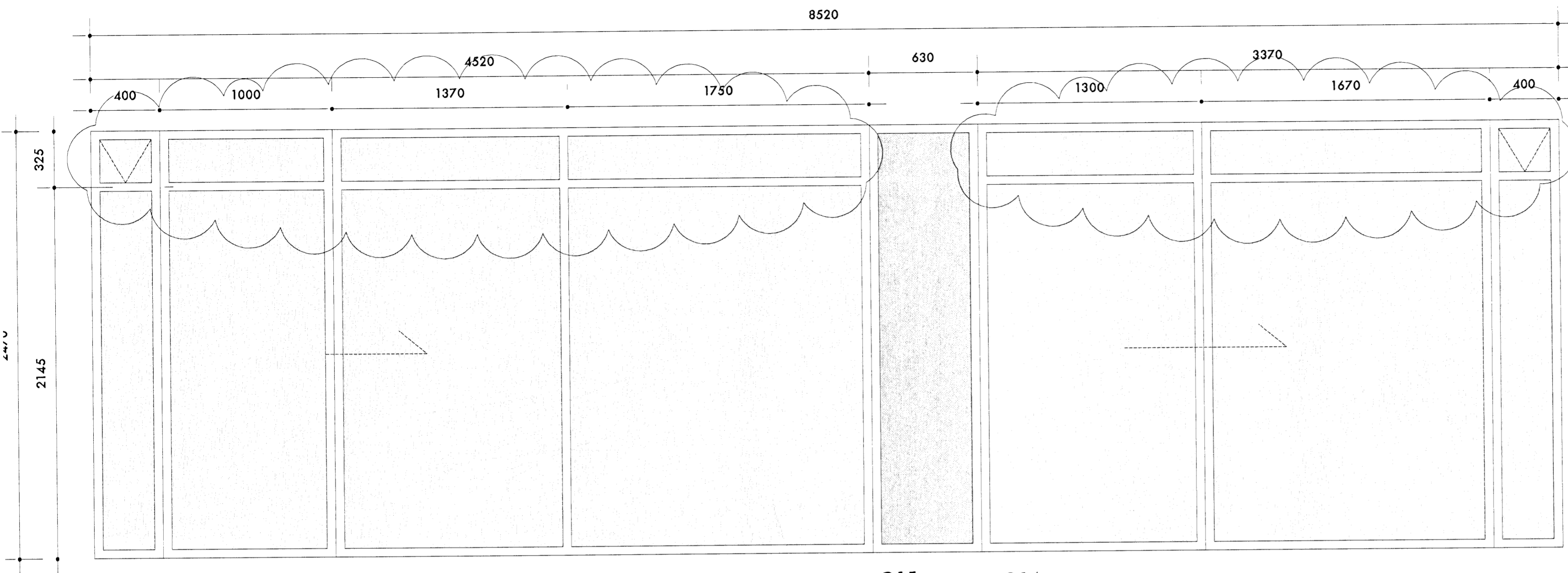


Samþykkt þann

11 JUN 2009

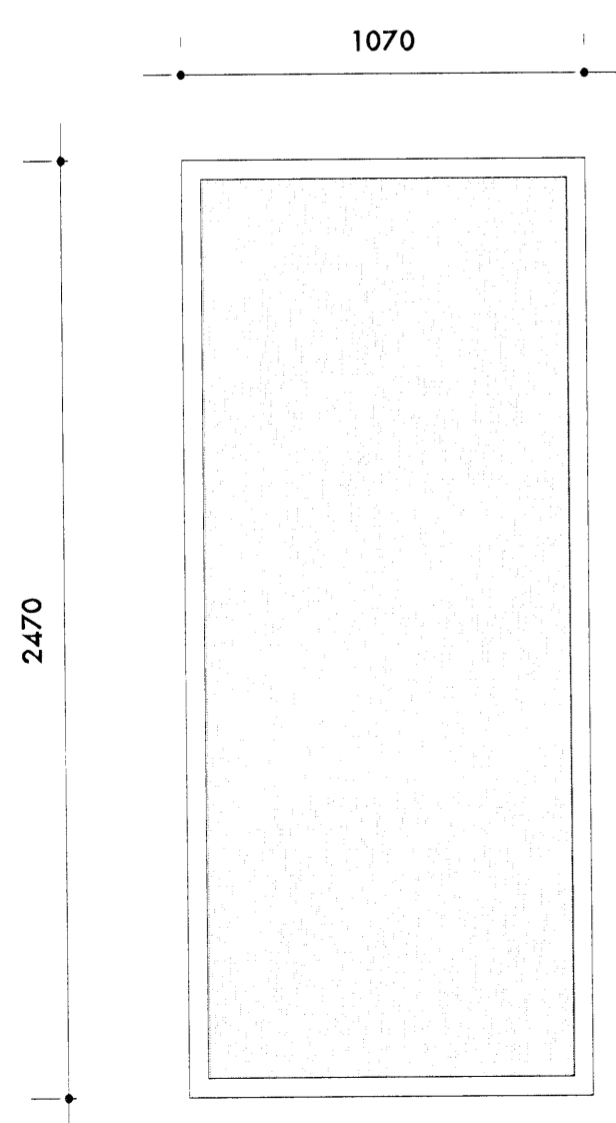
Byggingafulltrúinn í Hafnarfirði
F.h. Hrölfur S. Gunnlaugsson



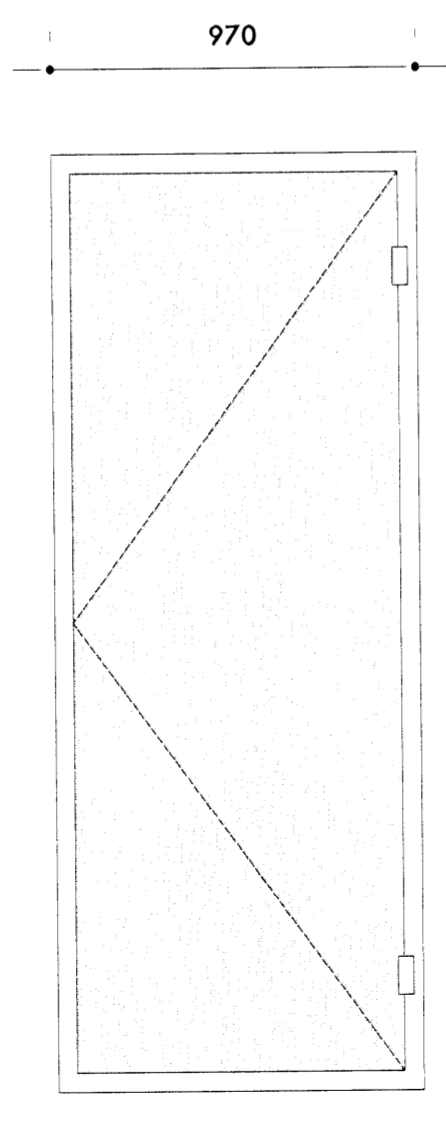
G16
1 stk.: 3 gluggar og 1 topphengdur gluggi,
1 stk rennihur

G15
1 stk gluggar
fyrir framan
vegg. sþrullvegi

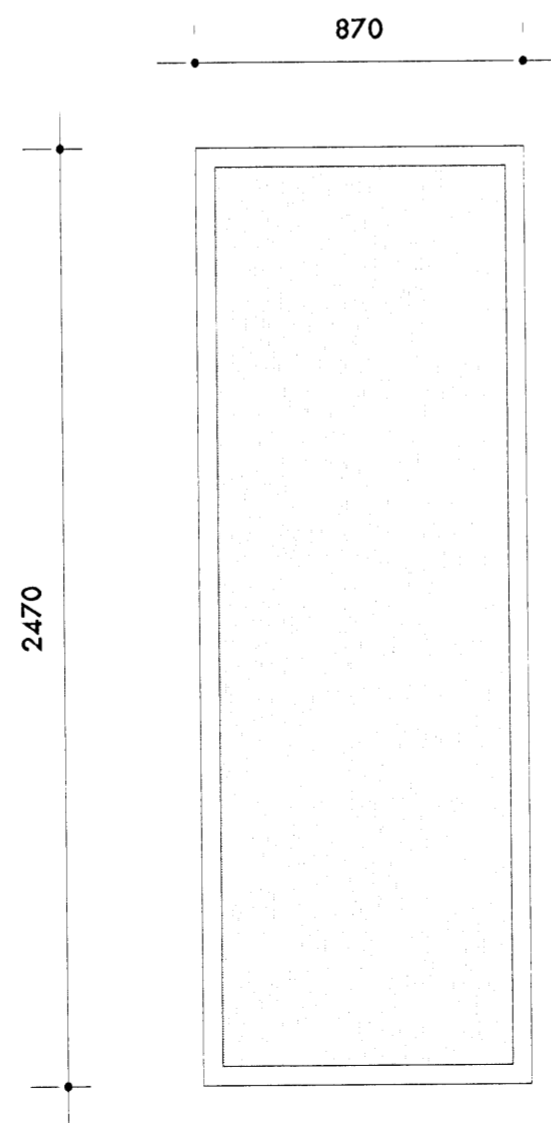
G14
1 stk.: 2 gluggar og 1 topphengdur gluggi,
1 stk rennihur



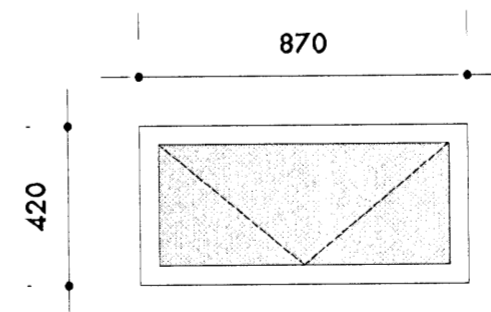
G17
1 stk: 1 gluggi



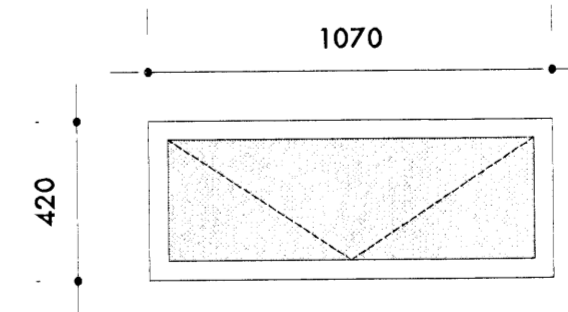
G18
1 stk.: svalahur, hægri hengd, opnast út



G19
1 stk.: 1 gluggi



G20a
1 stk.: 2 topphengdir gluggar
glér: sþrullvegi



G20b
1 stk.: 2 topphengdir gluggar
glér: sþrullvegi

08.05.2009: breytt glugga

Kristín Gunnarsdóttir
kristin brynja gunnarsdottir
kt.: 040766 5889
arkitekt fal
k@einrum.com
steffan lwesen
arkitekt fal maa
s@einrum.com

einrúm arkitektar
kt.: 471201 2860
gláshelium 20 | 104 reykjavík
sími 553 8989 | fax 568 8989

einrúm

Skógarás "L", Hafnarfjörður
teikning 0648 303

efni
dags.
breytt
mkv

Gluggateikningar
16 01 2008
08.05.2009
1:20

Önnur útgáfa teikningar dýktar
eða afritað er ógætt.