

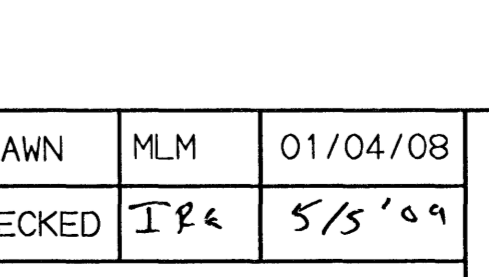
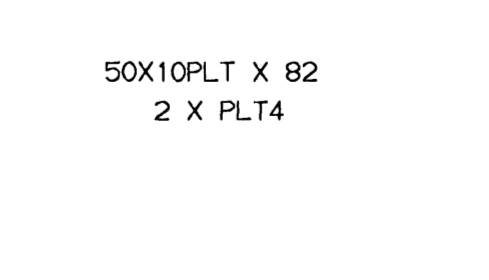
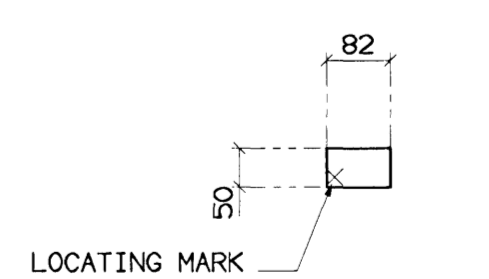
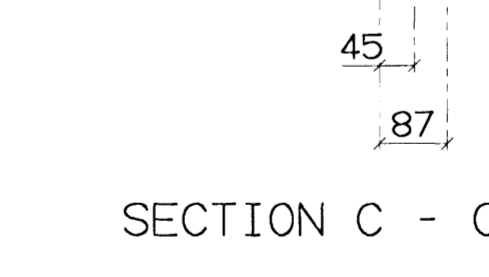
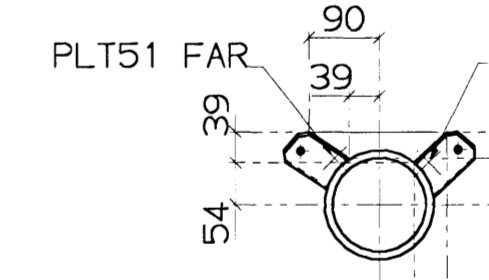
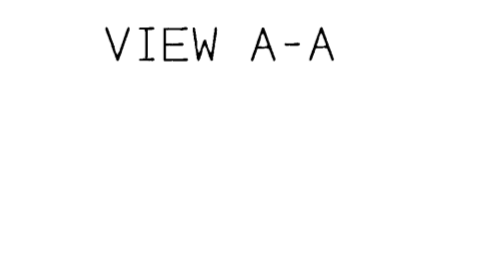
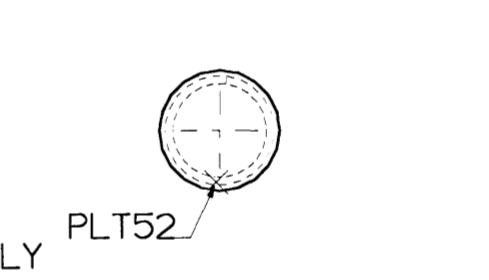
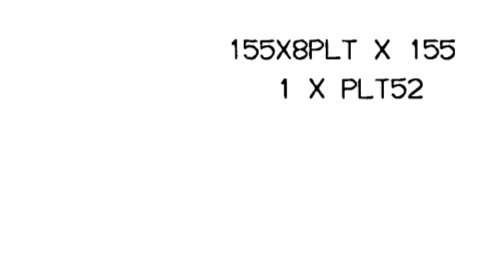
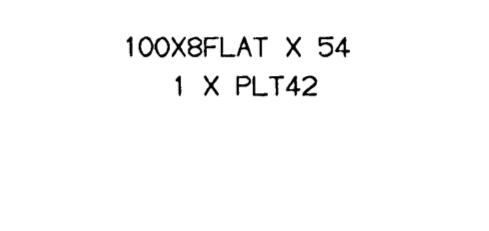
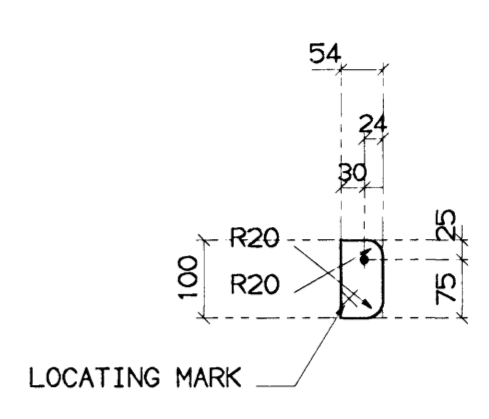
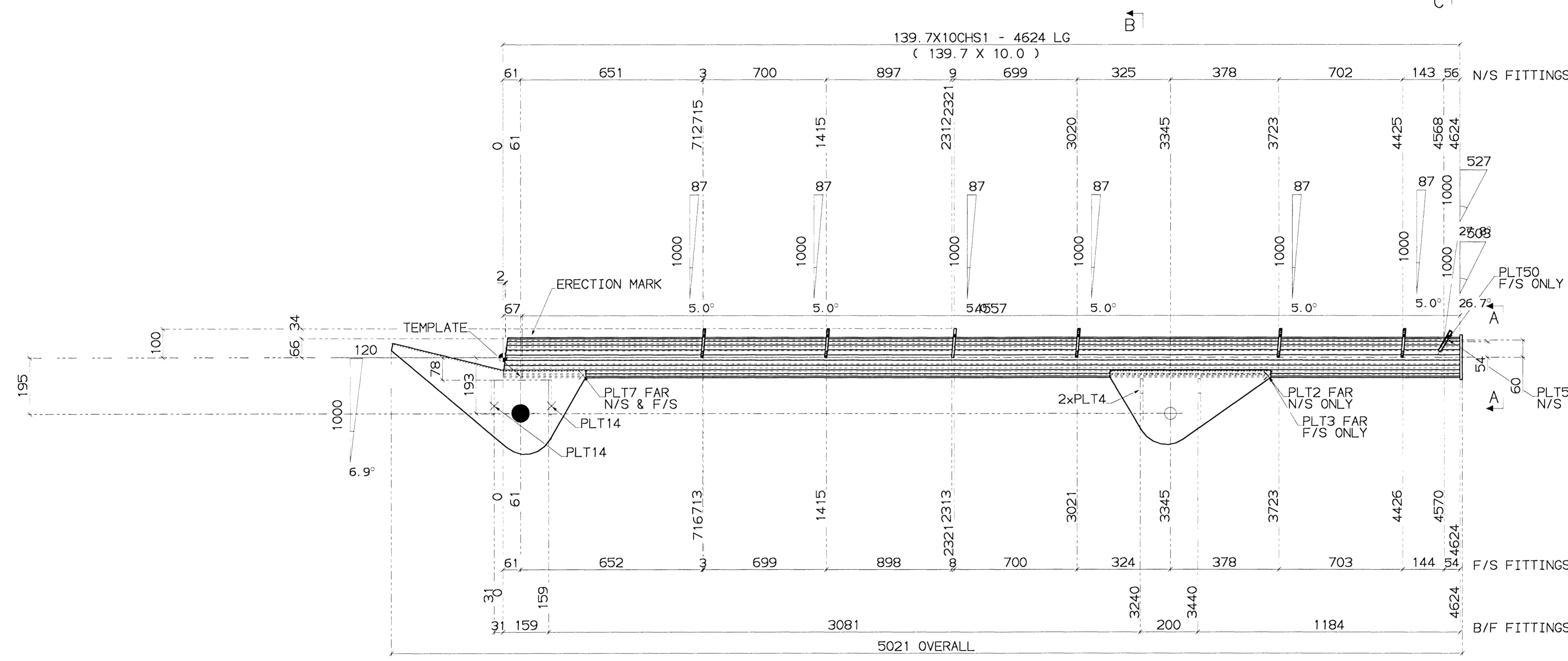
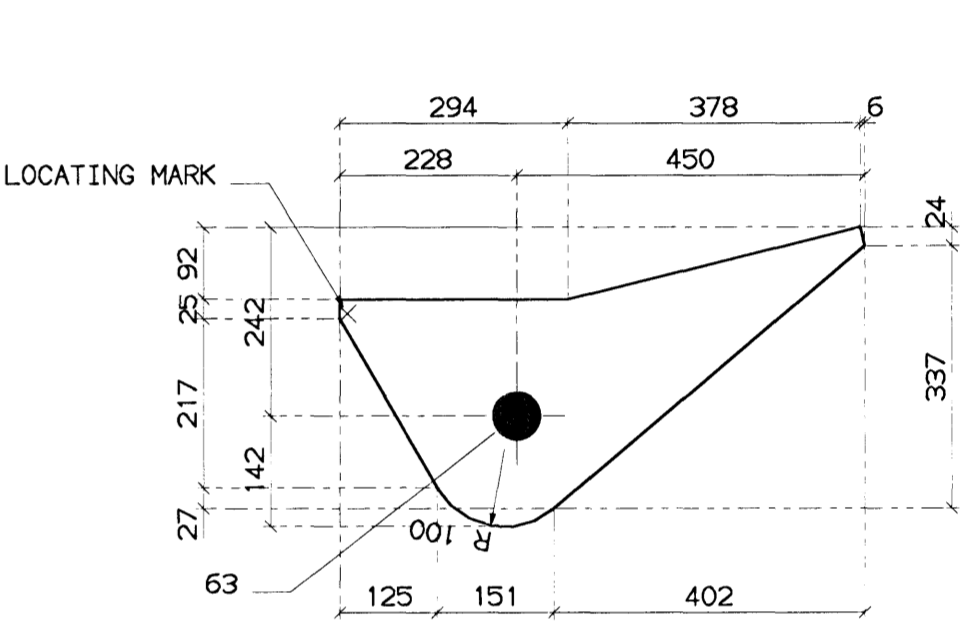
| MARK | SIZE | GRADE | LENGTH MM | No | AREA M2 | WEIGHT KG |
|--------|---------------|-------|-----------|----|---------|-----------|
| 59-MMA | 139. 7X10CHS1 | S235 | 4624 | 1 | 1.94 | 148.0 |
| PLT2 | 257X20PLT | S235 | 560 | 1 | 0.32 | 22.6 |
| PLT3 | 257X20PLT | S235 | 560 | 1 | 0.32 | 22.6 |
| PLT4 | 50X10PLT | S235 | 82 | 2 | 0.02 | 0.6 |
| PLT7 | 384X20PLT | S235 | 678 | 2 | 1.13 | 81.8 |
| PLT14 | 100X82PLT | S235 | 120 | 2 | 0.05 | 1.5 |
| PLT31 | 100X8FLAT | S235 | 100 | 5 | 0.12 | 3.1 |
| PLT32 | 100X8FLAT | S235 | 100 | 5 | 0.12 | 3.1 |
| PLT41 | 100X8FLAT | S235 | 54 | 1 | 0.01 | 0.3 |
| PLT42 | 100X8FLAT | S235 | 54 | 1 | 0.01 | 0.3 |
| PLT50 | 50X8PLT | S235 | 87 | 1 | 0.01 | 0.3 |
| PLT51 | 50X8PLT | S235 | 80 | 1 | 0.01 | 0.2 |
| PLT52 | 155X8PLT | S235 | 155 | 1 | 0.05 | 1.5 |
| TOTAL | | | | | | 286.1 |

| DIAMETER | TYPE | GRADE | GRIP LENGTH | BOLT LENGTH | No |
|----------|------|-------|-------------|-------------|----|
| 42 | XOX | 8.8 | 123 | 170 | 1 |

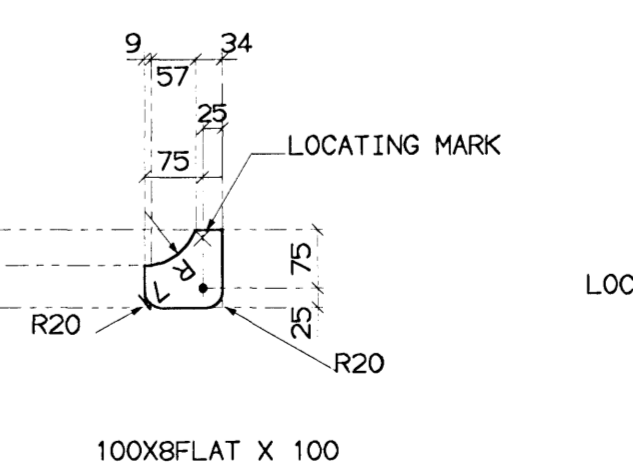
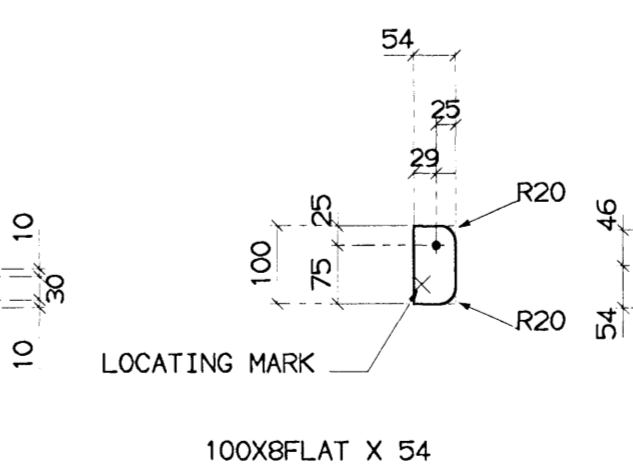
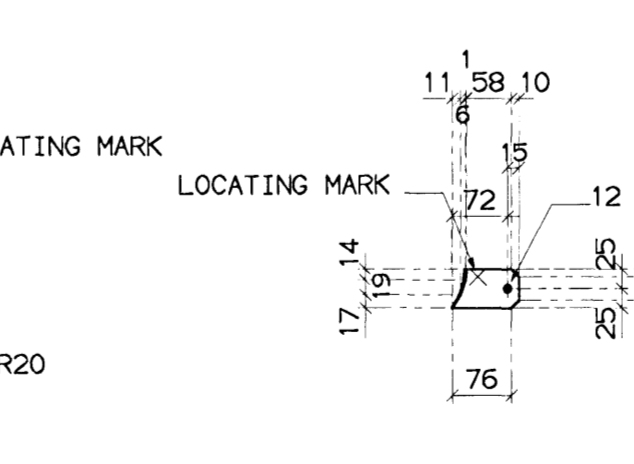
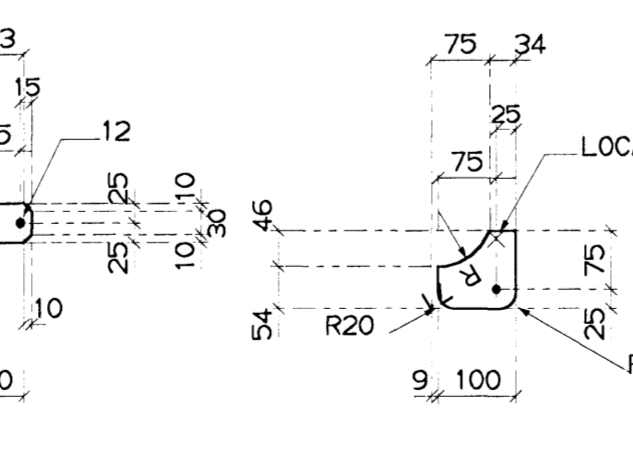
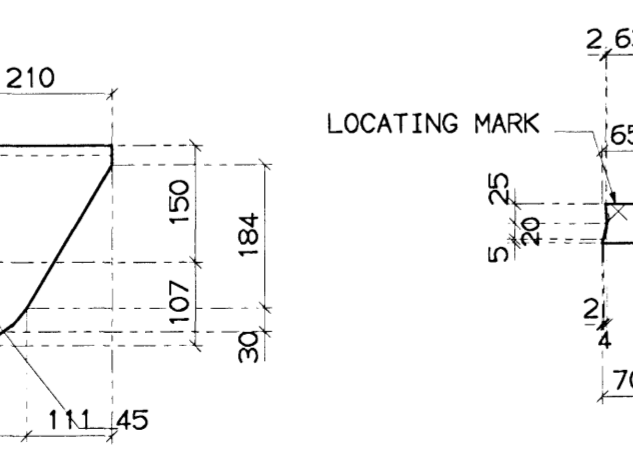
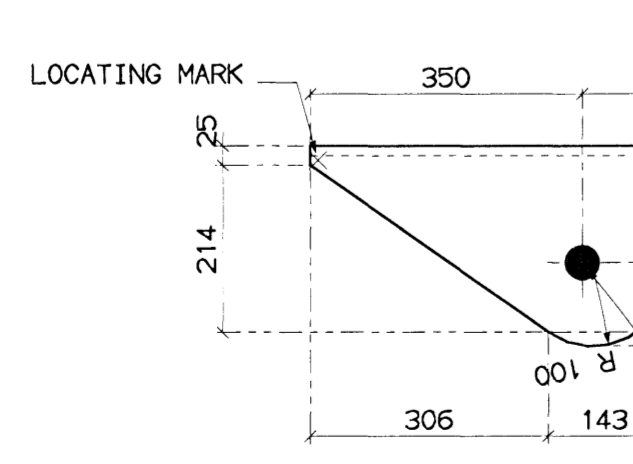
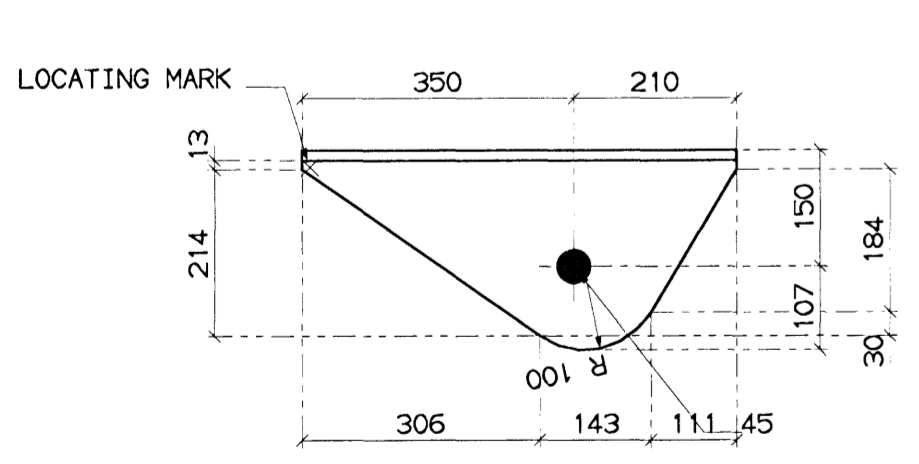
| ASSEMBLY MARK | No. Per ASSEMBLY | No. of ASSEMBLIES | TOTAL |
|---------------|------------------|-------------------|-------|
| MMA-12 | 1 | 5 | 5 |

| GRID LOC. | GRID LOC. |
|-----------|-----------|
| 1/E/3534 | 1/E/3931 |
| 1/K/3534 | 1/K/3931 |
| 1/O/3534 | 1/O/3931 |
| 1/Q/3534 | 1/Q/3931 |
| 1/S/3534 | 1/S/3931 |

RADIAL CUT DIMS GIVEN TO INTERSECTION POINTS



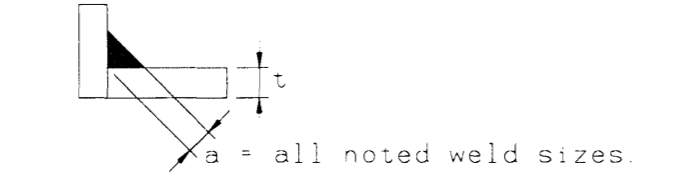
Samþykkt þann
 12 MAY 2009
 Byggingafráunir í Hafnarhöfði
 F.h. Hrólfur S. Gunnlaugsson



5 REQUIRED AS DRAWN MARKED 59-MMA

NOTES:

ALL WELDS FOR HOLLOW SECTIONS > 1.09: CONT. FILLED UNO, WHERE t IS THE WALL THICKNESS OF THE SECTION, OR FULL PENETRATION BUTT WELD.



GENERAL NOTES:

ALL WELDS 10 mm CONT. FILLET UNO
 ALL HOLES 11 mm DIAM UNO
 TOTAL WEIGHT 286.1 kg.
 STEEL GRADE S235

CLIENT

BYKO

PROJECT

KAPLAKRIKI

TITLE

DRAWN

MLM 01/04/08

CHECKED

IPK 5/5/09



GRENSÁSVÆGI: 1. 10B REYKJAVÍK SMÍ. 422 3000 FAX: 422 3001
 VEFFANG: www.vgkhonnun.is NETFANG: vgkhonnun@vgkhonnun.is

| SCALE | JOB No. | DWG No. | REV |
|-------|-----------|---------|-----|
| NTS | 7.120.257 | 59-MMA | |

| REV | BY | DATE | DETAILS |
|-----|----|------|---------|
| | | | |