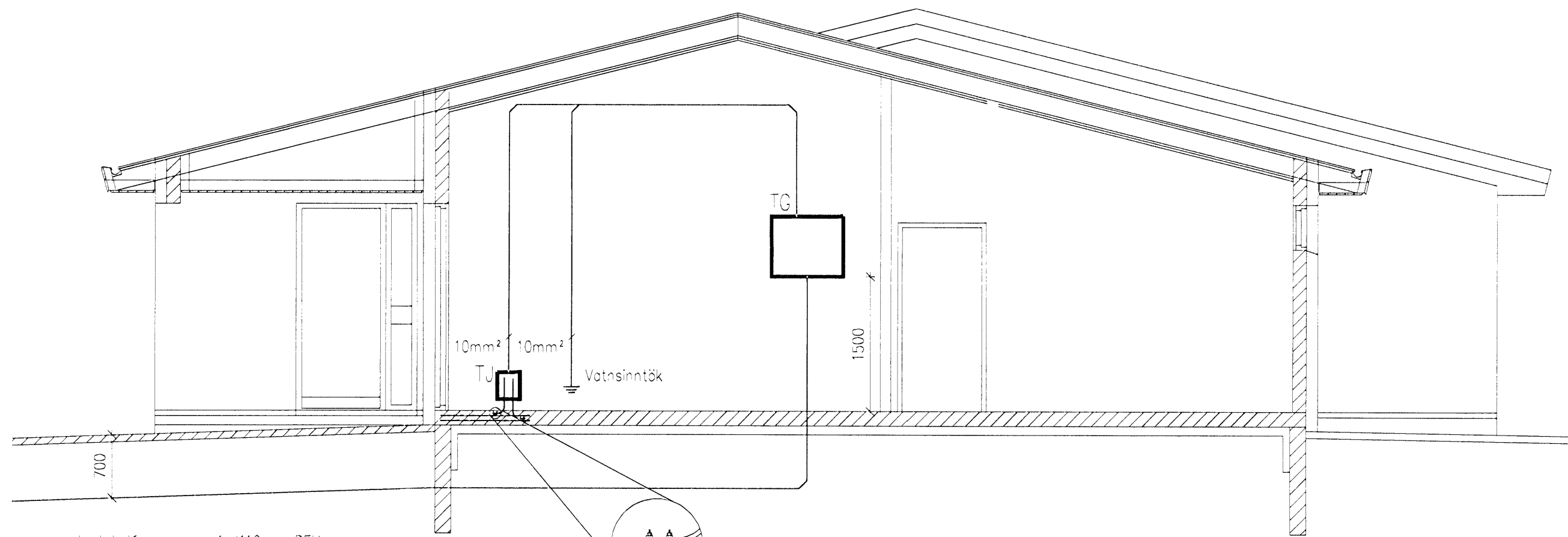
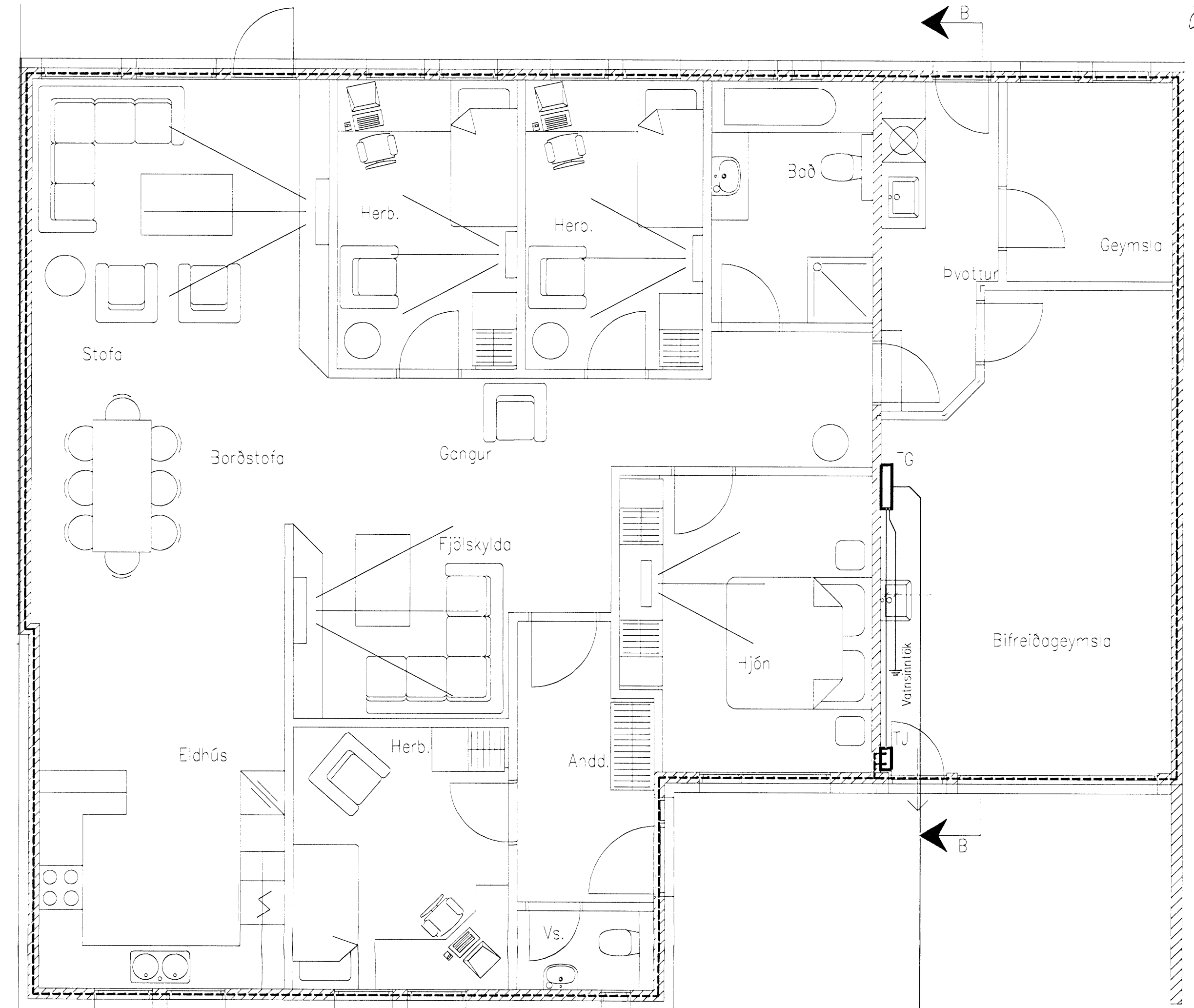


Mótt. 17/2 '08  
H. Hoff



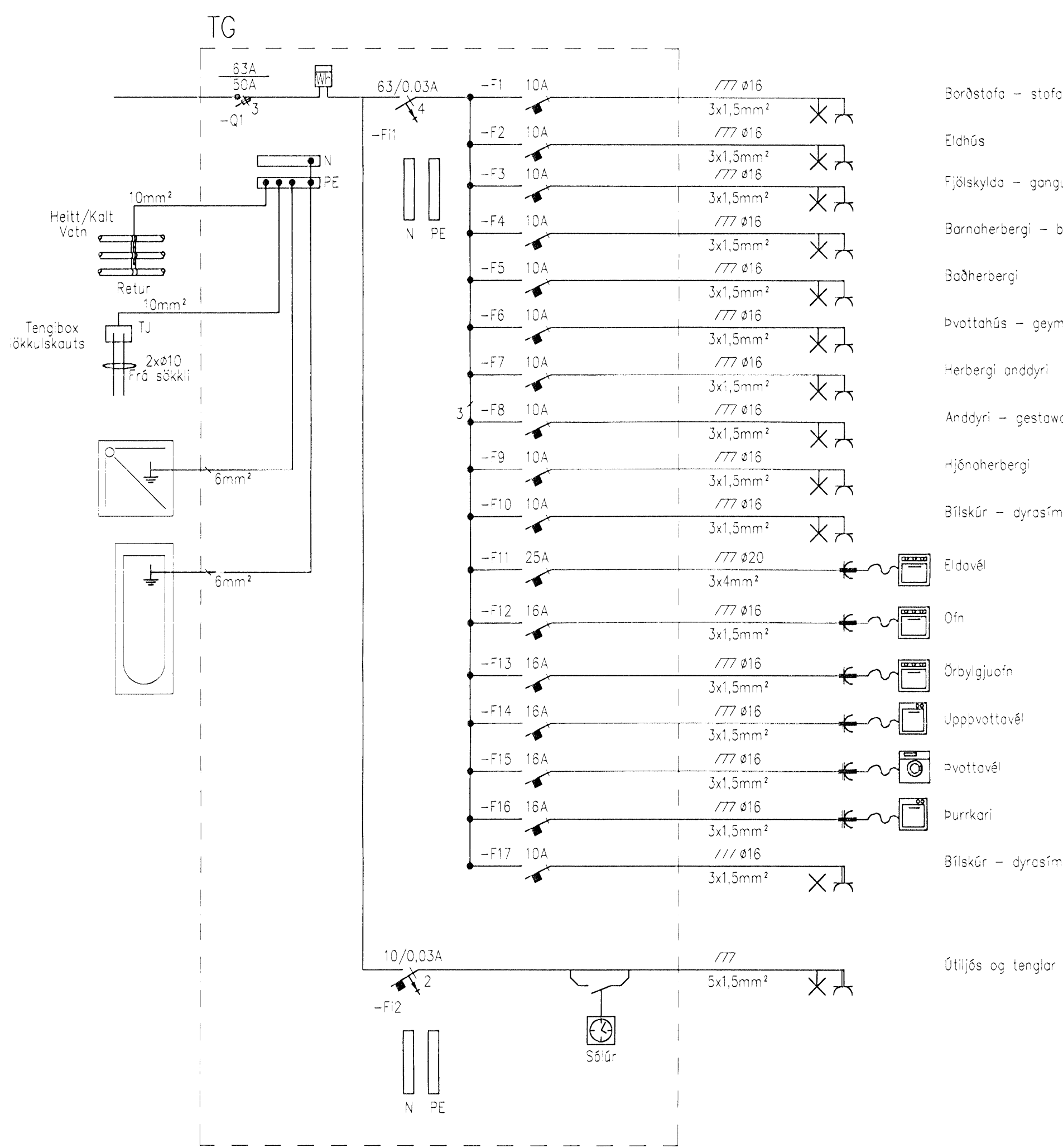
Inntak lögspennu: 1xø110mm PEH  
Inntak smáspennu: 2xø50mm PEH  
Lóðarýsling: 2xø25mm PEH  
Inntaksþápur ná út fyrir lóðarmörk.

Sníð B-B 1:50

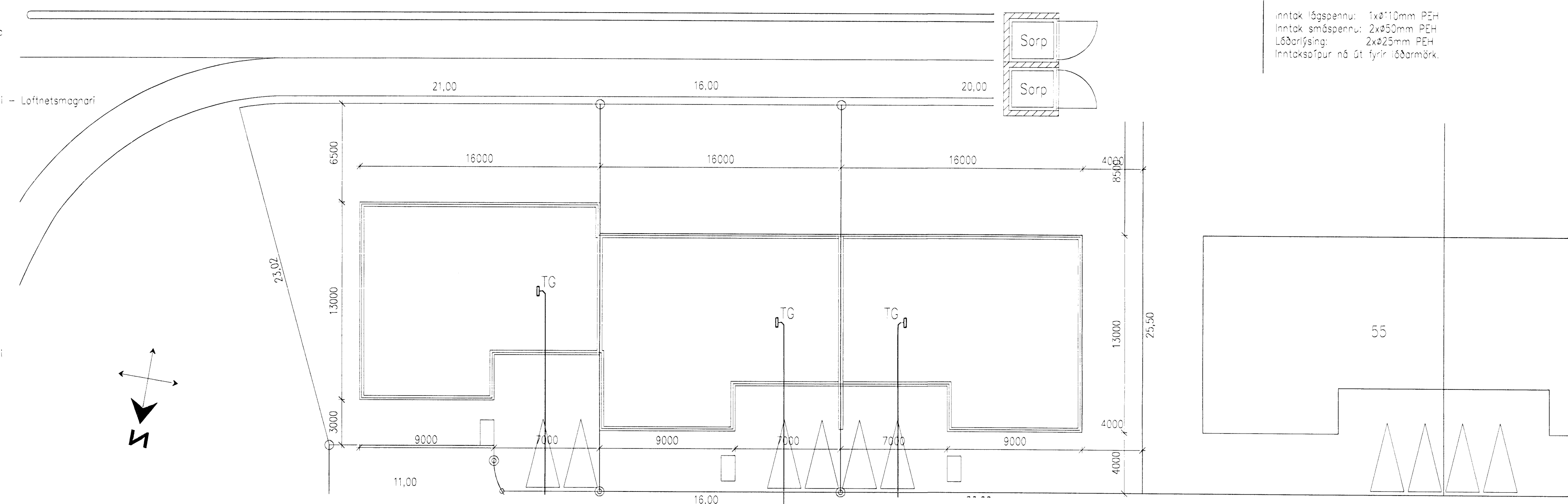


Grunnmynd 1.hæð - Sökkulskaut 1:50

Inntak lögspennu: 1xø110mm PEH  
Inntak smáspennu: 2xø50mm PEH  
Lóðarýsling: 2xø25mm PEH  
Inntaksþápur ná út fyrir lóðarmörk.



Einlínumynd



Afstöðumynd 1:200

Inntak lögspennu: 1xø110mm PEH  
Inntak smáspennu: 2xø50mm PEH  
Lóðarýsling: 2xø25mm PEH  
Inntaksþápur ná út fyrir lóðarmörk.

Kvistavellir