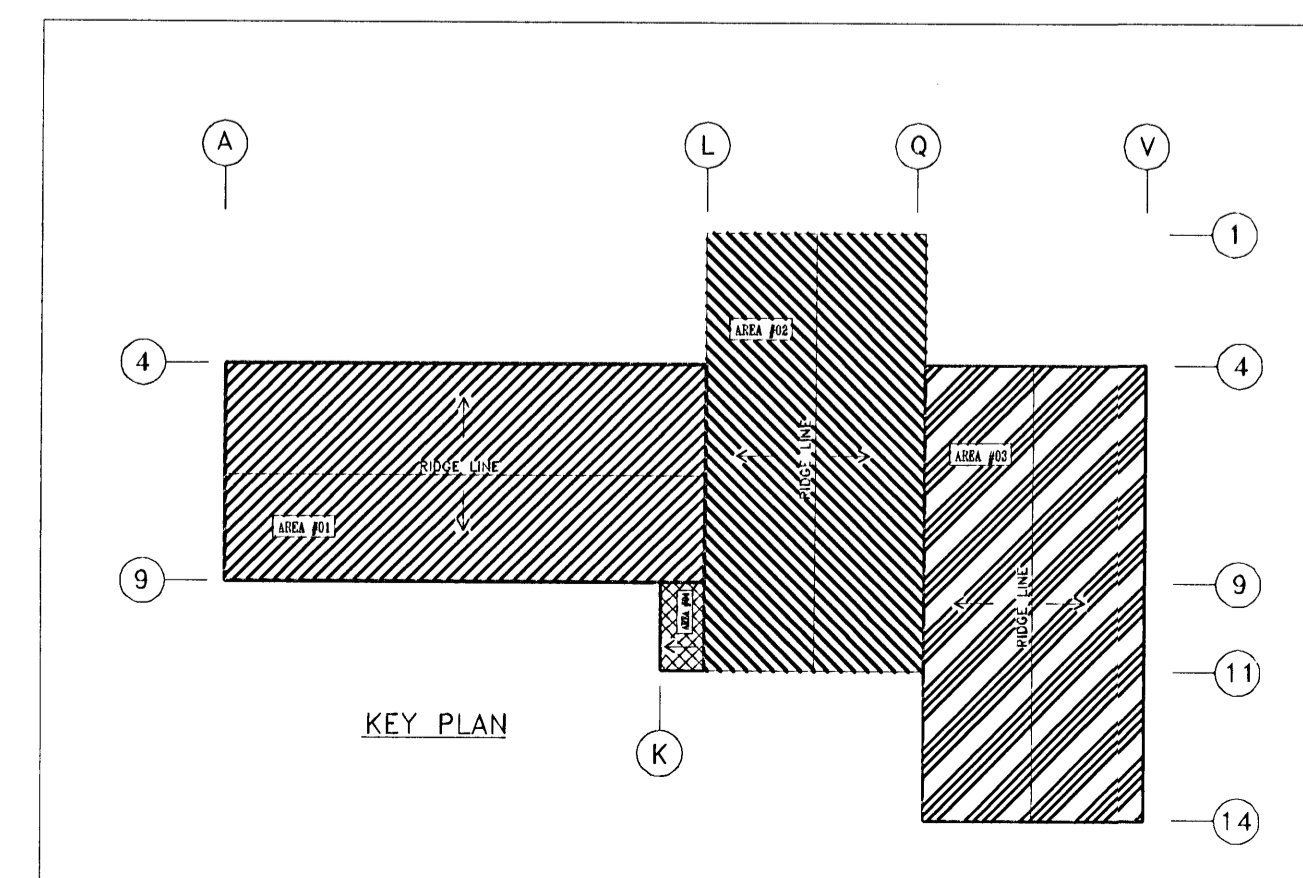


ANCHOR BOLT PLAN  
 Ⓢ - DENOTES MEZZANINE COLUMN



IMPORTANT NOTES

- Bracing reactions are to be considered with the main frame reactions. All reactions and loads are in Kilo-Newton and in Meter units.
- Zamil Steel assumes no responsibility or liability for the column foundations, slab design or construction. Foundations should be designed as a minimum for the given reaction loads.
- The slab or edge beam should be square and level to within 5mm tolerance. Anchor bolts should be set to the given dimensions and projection, with maximum deviation of 5mm. Anchor bolt threads should be protected during concreting operation, or thoroughly cleaned after pouring. All templates should be removed.
- The customer is responsible for accurate locations of building lines and bench marks at the site of the building.
- The installation of anchor bolts and embedded items must be done in accordance with the Code of Standard Practice for Steel Buildings of AISC section 7 and Zamil Steel drawings subject to the following maximum allowable tolerances;
  - 3mm center to center of any two bolts within an anchor bolt group.
  - 6mm center to center of adjacent anchor bolt groups.
  - Elevation of the top of anchor bolts +/- 12mm.
  - Maximum accumulation of 6mm per 30 meters along the established column line of multiple anchor bolt groups but not to exceed a total of 25mm.
  - 6mm from the center of any anchor bolt group to the established column line through that group.
- Anchor bolts shall be set perpendicular to the theoretical bearing surface unless shown otherwise.
- Anchor bolts should be set by the owner (or his civil contractor) in accordance with the "Issued for Construction" Anchor Bolt Setting Plan. Zamil Steel shall not be responsible for consequences arising from casting the anchor bolts on the basis of the "Approval drawings".

Samþykkt þann  
 24 JUNI 2008  
 Byggingarfulltrúinn í Hafnarfirði  
 F.h. Frólfur S. Gunnlaugsson

ASK  
 26. maí 2008  
 Hildur Halvarsson

VST Verkfræðistofa Sigurðar Thoroddsen hf.  
 Eft. VST Hildur Halvarsson 1509464929

FRAMED OPENING WIDTH	NO.	DATE	DESCRIPTION	DRN	CHK	DSN
2	22.01.2008	ISSUED FOR CONSTRUCTION	NSK	TPS	IPC	
ACCESS TYPE	1	24.11.2007	RE-ISSUED FOR APPROVAL	MGK	VRA	IPC
	0	25.10.2007	ISSUED FOR APPROVAL	KRT	VRA	IPC

ZS JOB NO. : V7-D567	BUILDING NO.: 01
PROJECT NAME : HEDINN HOUSE	
CUSTOMER : HEDINN	
JOBSITE LOCATION : HAFNAFIRDI, ICELAND	
DRAWING TITLE : ANCHOR BOLT PLAN	DRAWING NO. : F01