

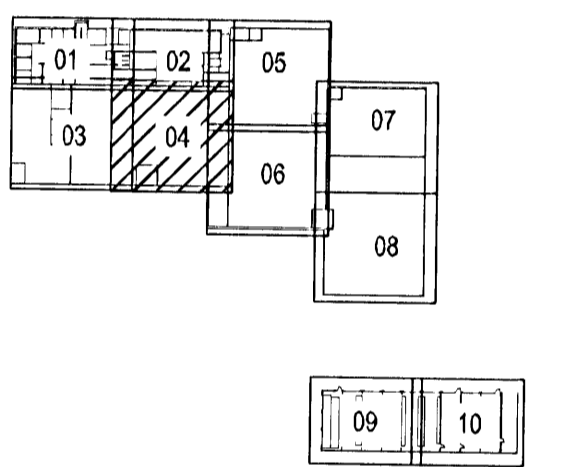
16/20

Hönnuður:
ARI, HAS
Yfirfarð:

Samþykkt: Davíð Sólvason kt: 100356-3339

Breytingar:

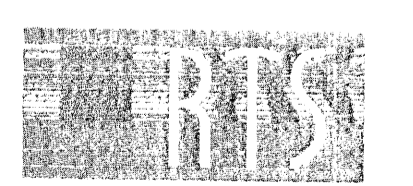
Lykilmynd



Aðalhönnuður:
ASK
04.03.2003
Handwritten signature

Héðinn
Gjáhella 4
221 Hafnarfjörður

Lampaplan
1. hæð
Mkv: 1:50



VERKFRÆÐISTOFA
Grensásvegur 3
108 Reykjavík
Sími 520 9900
Fax 520 9901
www.rts.is



32-2166-1-
011504 A
03.04.2008