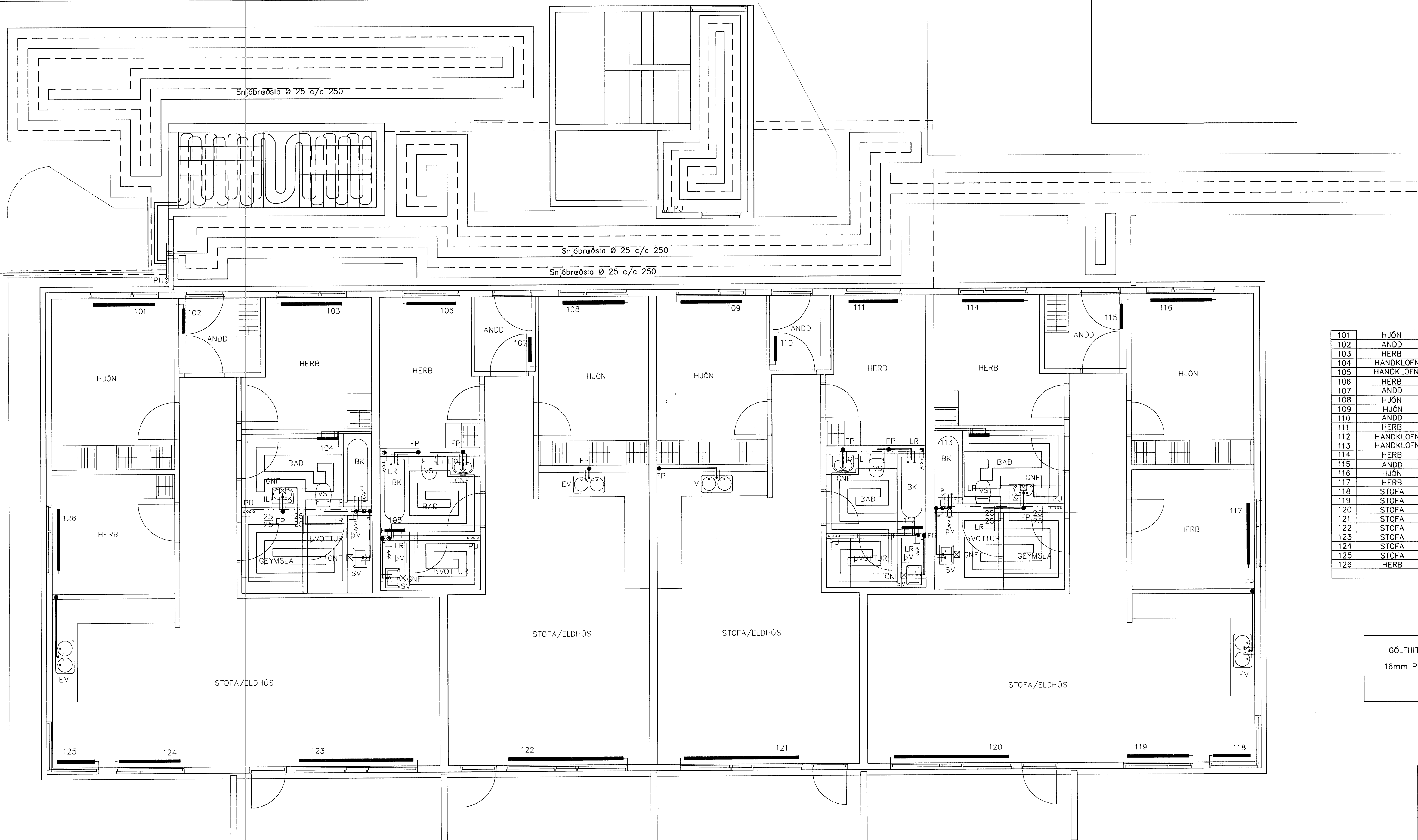


Samþykkt þann

21 OCT 2009

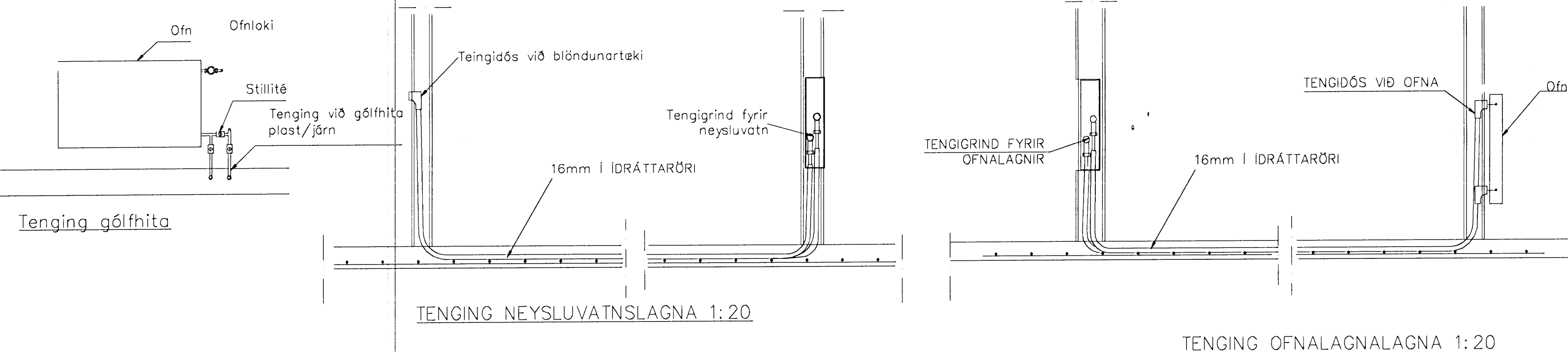
Byggingafráttir og innvið
F.h. Hrólfur S. Gunnlaugsson



| | | | | |
|-----|-----------|-------|------|-----|
| 101 | HJÓN | 1.140 | 1500 | 600 |
| 102 | ANDD | 470 | 600 | 600 |
| 103 | HERB | 790 | 1500 | 600 |
| 104 | HANDKLOFN | | | |
| 105 | HANDKLOFN | | | |
| 106 | HERB | 690 | 1200 | 600 |
| 107 | ANDD | 400 | 600 | 600 |
| 108 | HJÓN | 870 | 1500 | 600 |
| 109 | HJÓN | 870 | 1500 | 600 |
| 110 | ANDD | 400 | 600 | 600 |
| 111 | HERB | 690 | 1200 | 600 |
| 112 | HANDKLOFN | | | |
| 113 | HANDKLOFN | | | |
| 114 | HERB | 690 | 1500 | 600 |
| 115 | ANDD | 470 | 600 | 600 |
| 116 | HJÓN | 1.140 | 1500 | 600 |
| 117 | HERB | 780 | 1500 | 600 |
| 118 | STOFA | 630 | 900 | 400 |
| 119 | STOFA | 1.120 | 1500 | 400 |
| 120 | STOFA | 2.010 | 2800 | 400 |
| 121 | STOFA | 1.860 | 2800 | 400 |
| 122 | STOFA | 1.860 | 2800 | 400 |
| 123 | STOFA | 2010 | 2800 | 400 |
| 124 | STOFA | 780 | 1500 | 400 |
| 125 | STOFA | 630 | 900 | 600 |
| 126 | HERB | 780 | 1500 | 600 |

GÓLFHITALAGNIR
16mm PEX c/c200

GRUNNMYND 1 HÆÐAR 1:50



| | | | | |
|-----|---------|-------------------------------|--|------|
| | | | | |
| 02 | SEPT 08 | TENING VS BR.HANDKLOFN FÆRÐUR | | G.H. |
| 01 | JÚNÍ 08 | GÓLFHITA BREYTT | | G.H. |
| Br. | Dags. | Eðli breytinga | | Sign |

ESKIVELLIR 19
HAFNARFIRÐI

HITA-VATNS-FRÁRENNSLIS OG
LOFTRESTITLAGNIR 1 HÆÐAR

MKV. 1:50 1:20
DAGS. NÓV. 2007
VERK NR. 2723
TEIKN. NR. 2-13
HANNAD SIG. ÞORLEIFSS. KT. 241148-3009
TEIKNAD G.H.
YFIRFARIÐ

TÆKNIPJÓNUSTA SIGURDAR ÞORLEIFSSONAR ehf
STRANDÓTTU 11 220 HAFNARFIRÐI
Sími 555-4265 FAX 565-2876
E-mail tsh@sigmet.is
www.sigmet.is

Handwritten signature