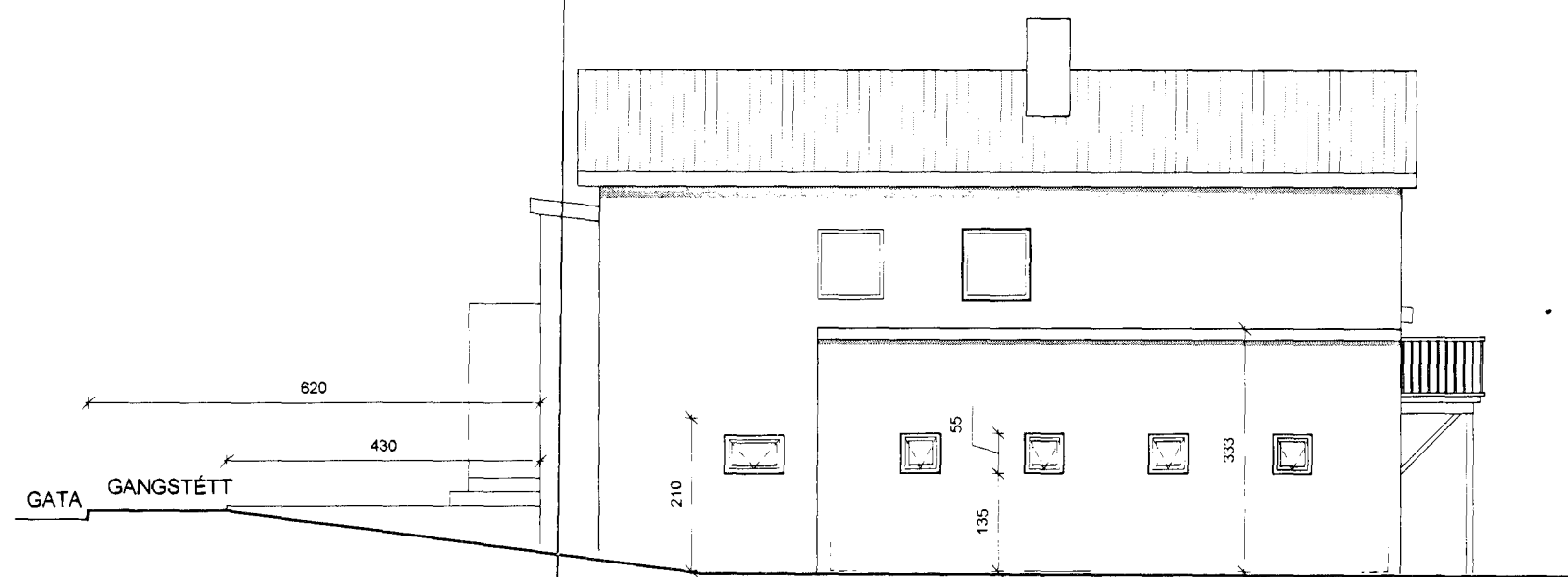
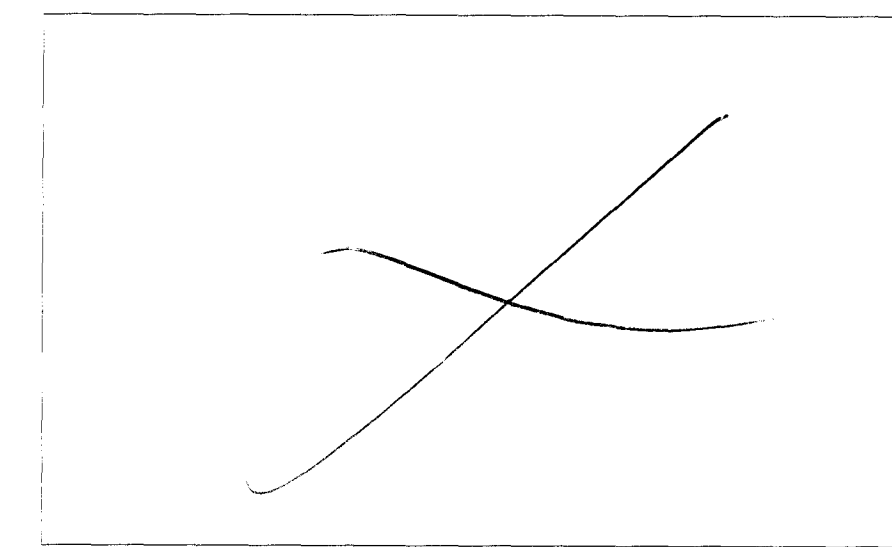


AUSTURHLIÐ



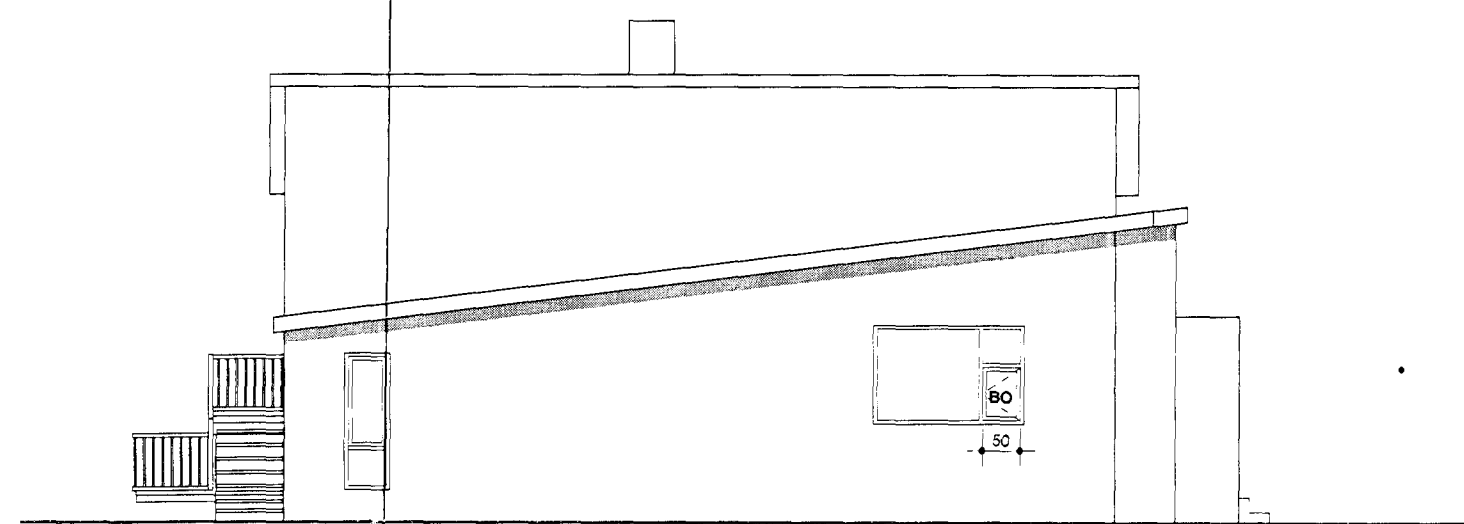
NORÐURHLIÐ



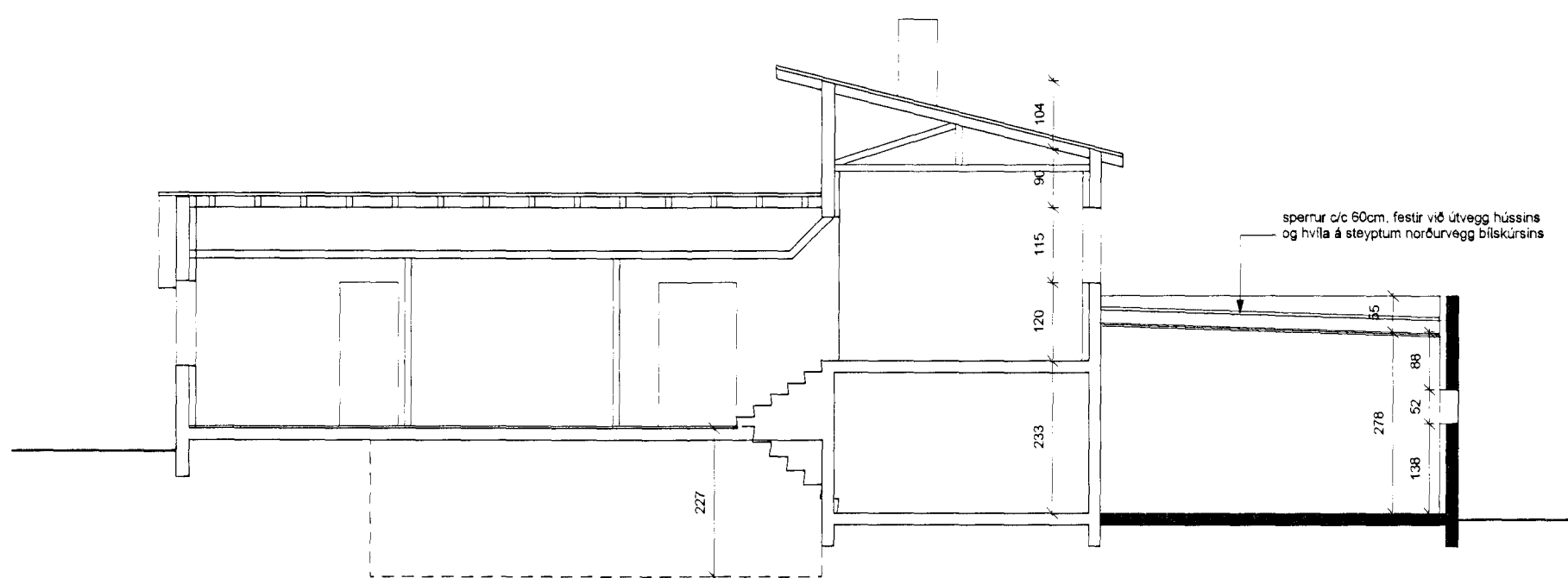
07.06.2012
Sigrún
Rasmussen



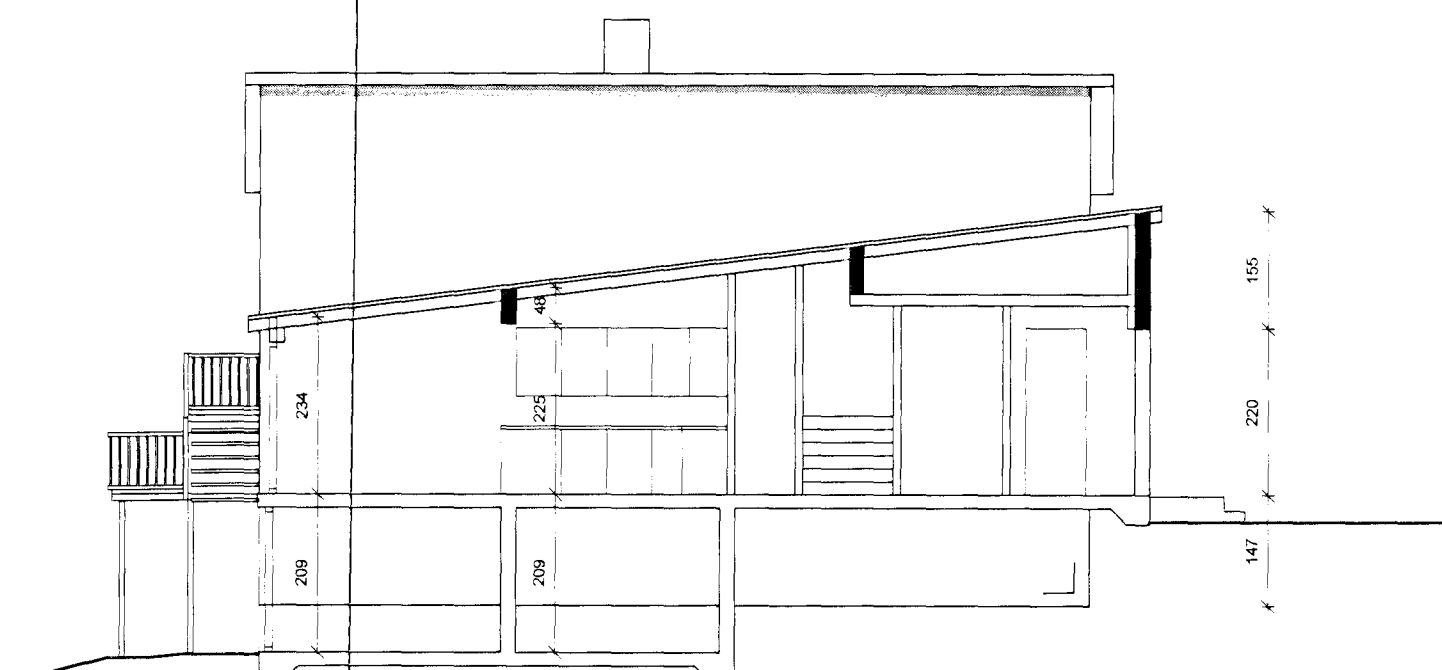
VESTURHLIÐ



SUÐURHLIÐ



SNEIÐING A-A



SNEIÐING B-B

27.04.2012
[Signature]

endurskoðun:	dags:	teikn.:	yfirf.:
A: -	-	-	-

ADALTEIKNINGAR

heimilisfang:	ARNARHRAUN 40, HAFNARFÖRDUR		
verknúmer:	12-02		
verkefni:	STARFSEMI FÓTAADGERDASTOFU Í KJALLARA		
efni teikningar:	ÚTLIT OG SNEIÐINGAR	teikn.nr.:	10-01
teiknað:	IH	mælikvarði:	1:100
frumstærð blaðs:	A2	dagsetning:	10.02.2012